

Product datasheet for **MG223298**

F2rI3 (NM_007975) Mouse Tagged ORF Clone

Product data:

Product Type: Expression Plasmids
Product Name: F2rI3 (NM_007975) Mouse Tagged ORF Clone
Tag: TurboGFP
Symbol: F2rI3
Synonyms: P; PAR4
Mammalian Cell Selection: Neomycin
Vector: pCMV6-AC-GFP (PS100010)
E. coli Selection: Ampicillin (100 ug/mL)
ORF Nucleotide Sequence: >MG223298 representing NM_007975
Red=Cloning site Blue=ORF Green=Tags(s)

TTTTGTAATACGACTCACTATAGGGCGGCCGGAATTCGTCGACTGGATCCGGTACCGAGGAGATCTGCC
GCC**CGATCGCC**

ATGTGCTGGCCGCTGCTGTATCCTTTGGTGTGGGGCTCAGCATCAGCCTGGCAGAGGGCATCCAGACCC
CCAGCATCTACGATGATGTAGAGAGTACCAGGGGAAGCCATGAAGGCCCTCTGGTCCCACAGTAGAACT
CAAGGAGCCGAAGTCTCAGACAAGCCTAATCCACGAGGCTACCCGGCAAATCTGTGCCAACGACAGT
GACACGCTGGAGCTCCCGCCAGCTCTCAAGCACTGCTGCTGGGGTGGTCCCACGAGGCTGGTACCTG
CCCTCTATGGGCTTGTGGTGGCTGTGGGGCTGCCTGCCAATGGGCTGGCGCTGTGGGTGCTGGCCACAAG
GGTGCCACGCCTGCCATCCACCATTCTGCTCATGAACCTGGCAGTGGCTGATCTGCTGTTGGCCCTGGT
CTGCCACCACGACTGGCTTACCCTTGGCTGGCCAGCGCTGGCCATTTGGTGAGGCTGCCTGCCGGTGG
CCACAGCTGCCCTCTATGGCCACATGTATGGTTAGTGTGCTGCTGGCTGCAGTCAGCTTGGACAGATA
CCTGGCCCTGGTGCATCCTTTGCGGGCCCGTGCCTGCTGCTCAACGCCTCACTACTGGACTCTGTTTG
GTGGCTGGCTCTCTGCAGCCACCCTGGCCTTGCTCTCACTCTGCATCGGCAGACCTCCCGATTAGCTG
GCTCCGATCGCATGCTGTGTCATGATGCGCTGCCCTGACTGAGCAGACCTCCACTGGAGACCGGCCTT
CATCTGCCTGGCTGTCTGGGCTGCTTCGTGCCACTGCTGGCCATGGGCTGTGCTATGGAGCCACCCTT
CGTGCCTGGCCCAATGGCCAGCGCTACAGCCATGCCTCAGACTGACAGCCCTGGTACTGTTCTCGG
CAGTGGCCTCTTTCACACCTAGCAATGTGCTGCTGGTGTGCTGCACTATTCAAACCCGAGCCCTGAGGCCTG
GGCAATCTCTATGGAGCCTATGTGCCAGCCTGGCACTCAGCACCCCAACAGCTGCGTAGACCTTTTC
ATCTACTACTATGTGCCATGAGTTACAGGAGAAGGTACGCGCTATGTTGTGTCGCCAGCCGGAGGCCA
GCAGCTCTCTCAGGCCTCCAGGAGGCTGGAAGCCGAGGGACTGCCATTTGCTCCTCTACACTTCTG

ACGCGTACGCGGCCGCTCGAG - GFP Tag - GTTTAA



[View online »](#)

Protein Sequence: >MG223298 representing NM_007975
 Red=Cloning site Green=Tags(s)

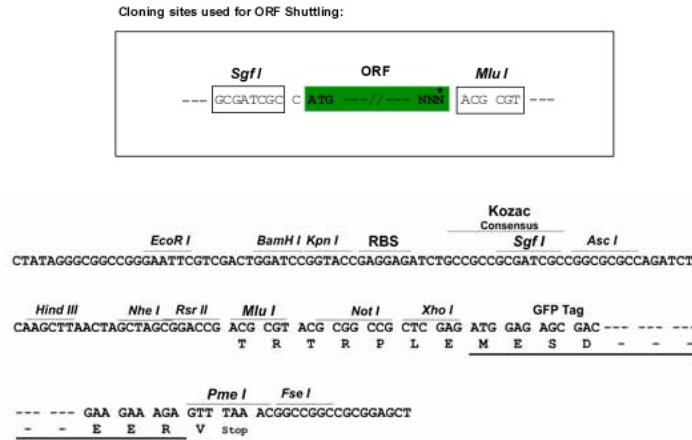
MCWPLLYPLVLGLSISLAEGIQTPSIYDDVESTRGSHGEPGLGPTVELKEPKSSDKPNPRGYPGKFCANDS
 DTLELPASSQALLLGWVPTLVPALYGLVAVGLPANGALWVLA TRVPRLPSTILLMNLAVADLLLALV
 LPPRLAYHLRGQRWPFGEAACRVATAALYGHMYGSVLLLA AVSLDRYLALVHPLRARALRGQRLTTGLCL
 VAWLSAATLALPLTLHRQTFRLAGSDRMLCHDALPLTEQTSWHPAFICLAVLGC FVPLLAMGLCYGATL
 RALAANGQRYSHALRLTALVLFSAVASFTPSNVLLVLHYSNP SPEAWGNLYGAYVPSLALSTLNSCVDPF
 IYYYYSHEFREKVRAMLCRQPEASSSSQASREAGSRGTAICSSTLL

TRTRPLE - GFP Tag - V

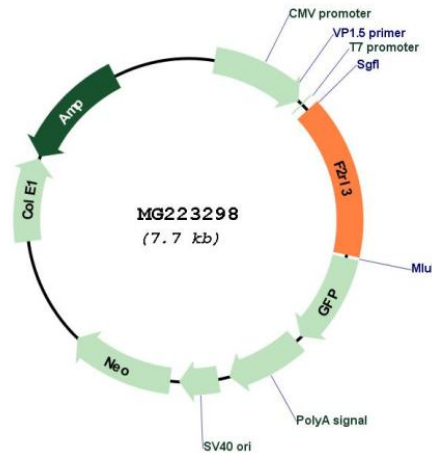
Restriction Sites:

Sgfl-MluI

Cloning Scheme:



Plasmid Map:



ACCN:

NM_007975

ORF Size:	1188 bp
OTI Disclaimer:	The molecular sequence of this clone aligns with the gene accession number as a point of reference only. However, individual transcript sequences of the same gene can differ through naturally occurring variations (e.g. polymorphisms), each with its own valid existence. This clone is substantially in agreement with the reference, but a complete review of all prevailing variants is recommended prior to use. More info
OTI Annotation:	This clone was engineered to express the complete ORF with an expression tag. Expression varies depending on the nature of the gene.
Components:	The ORF clone is ion-exchange column purified and shipped in a 2D barcoded Matrix tube containing 10ug of transfection-ready, dried plasmid DNA (reconstitute with 100 ul of water).
Reconstitution Method:	<ol style="list-style-type: none">1. Centrifuge at 5,000xg for 5min.2. Carefully open the tube and add 100ul of sterile water to dissolve the DNA.3. Close the tube and incubate for 10 minutes at room temperature.4. Briefly vortex the tube and then do a quick spin (less than 5000xg) to concentrate the liquid at the bottom.5. Store the suspended plasmid at -20°C. The DNA is stable for at least one year from date of shipping when stored at -20°C.
RefSeq:	NM_007975.4
RefSeq Size:	1762 bp
RefSeq ORF:	1191 bp
Locus ID:	14065
UniProt ID:	O88634
Cytogenetics:	8 B3.3
Gene Summary:	This gene encodes a member of the protease-activated receptor subfamily, part of the G-protein coupled receptor 1 family of proteins. The encoded receptor is proteolytically processed to reveal an extracellular N-terminal tethered ligand that binds to and activates the receptor. This receptor plays a role in blood coagulation, inflammation and response to pain. Mice lacking a functional copy of this gene exhibit impaired platelet activation and prolonged bleeding times. [provided by RefSeq, Sep 2016]