

Product datasheet for **MG223296**

Fmo4 (NM_144878) Mouse Tagged ORF Clone

Product data:

Product Type:	Expression Plasmids
Product Name:	Fmo4 (NM_144878) Mouse Tagged ORF Clone
Tag:	TurboGFP
Symbol:	Fmo4
Synonyms:	D1Ertd532e
Mammalian Cell Selection:	Neomycin
Vector:	pCMV6-AC-GFP (PS100010)
E. coli Selection:	Ampicillin (100 ug/mL)



[View online »](#)

ORF Nucleotide Sequence:

>MG223296 representing NM_144878
 Red=Cloning site Blue=ORF Green=Tags(s)

TTTTGTAATACGACTCACTATAGGGCGGCCGGAATTCGTCGACTGGATCCGGTACCGAGGAGATCTGCC
 GCC**CGCATCGCC**

ATGGCCAAGAAGGTGGCAGTGATTGGAGCTGGCGTAAGTGGCCTGTCCTCTATCAAGTGCTGCTTGGACG
 AGAACCTGGAGCCACCTGCTTTGAGAGAAGTAGCGACTTTGGCGGACTGTGGAAGTTGCTGACACTTC
 CAAGGATGGGATGACCAGGGTTTACAGGTCAGTGTGACAAATGTCTGCAAAGAAATGTCATGTTACAGT
 GACTTCCCATTCCGAGAAGATTACCCCAACTTCATGAGCCATGAGAAATCTGGGACTATCTCAGAGAAT
 TTGCTGAGCACTTTGGCCTGCTGAGATATTCGGTTTAAACAAGTGTGCTCAGTGTAAACAAAGCGCCC
 AGACTTCTCTGAAACTGGCCAGTGGGATGTTGTACAGAGACAGAAGGCAACCGGACAGGGCAGTATTT
 GACGCTGTTATGGTTTGCAGTGGCAATTCCTGAGCCACATTTACCTCTGGAGTCTTTCTGGAATCC
 ATAAGTTTAAAGGACAGATCCTGCACAGCAAGAGTACAGGATCCAGATGCCTTTGGGGCAAGCGCAT
 CCTGGTGGTTGGTCTTGGAAACTGGCGGGACATAGCAGTAGAGCTCAGTGAATAGCAGCTCAGGTG
 TTTCTCAGCACTAGAAGTGGCACCTGGTCTTAAGCCGCTCCTCACCTGGTGGTACCCTTCAATATGA
 TACAGACAAGATGGCTCAATTTCTTGTACGAGTTCTGCCTTACGTTTTATAAACTGGACTCACGAGAG
 GAAAATGAATAAAATACTTAACCATGAGAATTATGGATTAAGCATTGCAAAAAGGGAAAAACCAAAGTTT
 ATTGTAATGATGAACTACCAACCTGTATCCTTTGTGGGAAAGTACCATGAAAACCGAGCGTGAAGGATT
 TTACAGAACTCTTGTGTTGCTTTGAAGATGGTACAACAGAAGCCAACATTGATGTAGTGATCTTCACTAC
 AGGATATGAATTTCTTTCCCTTTTTGAAGAAGCTCTCAAAGCCTTTGTACAAGAAGATCATCCTA
 TACAACGAGTCTTTCCCAAAATTTGGAGAGAGCAACATTAGCCATTATTGGCCTGATCAGCCTTAATG
 GGTCGATCTTAGTGGGCACAGAGTTCCAAGCACGATGGGCCACAAGAGTATTCAAAGGACTCTGTAGCAT
 ACCTCCATCTCAGAAACTGATGGCCGAAGCCACTAAAATGGAGCAGCTCATTAAAAGGGGTGTGATTA
 GATACCAGCCAAGACAACTGGACTTCATTACCTACATGGACGAGCTCACTCAGTGCATAGGCGCGAAGC
 CCAGCATTCCACTTTTGTTCATTAAGGATCCAAGATTGGCTTGGGAAAGTTTTCTTTGGACCATGTACCCC
 TTACCAATACCGCCTAGTGGCCCTGGAAGATGGGATGGAGCCAGAAATGCCATCCTGACACAGTGGGAC
 AGGACTCTGAAACCATAAAAACCGAATTGTTCTTAAGTCCCCGAGCCTACCTCCCTCTCACATTACT
 TAATAGCTTGGGGGCACCTGCTCTGTCTCTCTTTTACTTATCTACAAATCTTACATTTTCTTGA
 ATTGGTACAAGGTAAGCTACCGAGAAGATTTCCCTTACCGATTACTGTGTACATGCCCCAGAAGTCA

ACGCGTACGCGGCCGCTCGAG - GFP Tag - GTTTAA

Protein Sequence:

>MG223296 representing NM_144878
 Red=Cloning site Green=Tags(s)

MAKKVAVIGAGVSGLSSIKCLDENLEPTCFERTSDFGGLWKFADTSKDGMRVYRSLVTNVCKEMSCYS
 DFPFREDYPNFMSEKFDYLRFAEHFLLRYIRFKTTVLSVTKRPDFSETGQWDVVTEEGKRDRVAF
 DAVMVCTGQFLSPHLPLESFPGIHKFKGQILHSQYRIPDAFRGKRILVVGLGNTGGDI AVELSGIAAQV
 FLSTRGTWVLSRSPGGYPFNMIQTRWLNFLVRVLPSTRFINWOTHERKMNKILNHENYGLSIAKGGKPKF
 IVNDELPTCILCGKVTMKTsvkdfTESSVVFEDGTTEANIDVVIFTTGYEFSFPFFEEPLKSLCTKKIIL
 YKRVFPPNLERATLAIIGLISLNGSILVGTEFQARWATRVFKGLCSIPPSQKLMAEATKMEQLIKRGVIK
 DTSQDKLDFITYMDEL TQCIGAKPSIPLLFIKDPRLAWEVFFGPCTPYQYRLVGPGRWDGARNAILTQWD
 RTLKPLKTRIVPKSPEPTSLSHYLIWAGAPVLLVSLLLIYKSSHFLVQGKLP RRRFPYRLLWYMPQNS

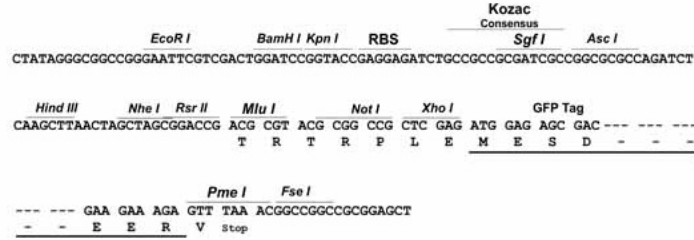
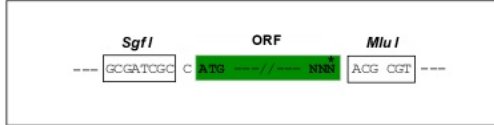
TRTRPLE - GFP Tag - V

Restriction Sites:

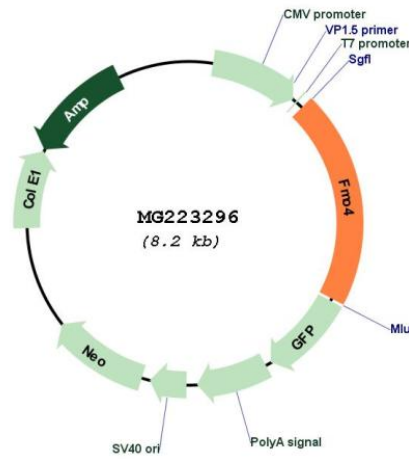
Sgfl-MluI

Cloning Scheme:

Cloning sites used for ORF Shutting:



Plasmid Map:



ACCN:	NM_144878
ORF Size:	1680 bp
OTI Disclaimer:	The molecular sequence of this clone aligns with the gene accession number as a point of reference only. However, individual transcript sequences of the same gene can differ through naturally occurring variations (e.g. polymorphisms), each with its own valid existence. This clone is substantially in agreement with the reference, but a complete review of all prevailing variants is recommended prior to use. More info
OTI Annotation:	This clone was engineered to express the complete ORF with an expression tag. Expression varies depending on the nature of the gene.
Components:	The ORF clone is ion-exchange column purified and shipped in a 2D barcoded Matrix tube containing 10ug of transfection-ready, dried plasmid DNA (reconstitute with 100 ul of water).
Reconstitution Method:	<ol style="list-style-type: none">1. Centrifuge at 5,000xg for 5min.2. Carefully open the tube and add 100ul of sterile water to dissolve the DNA.3. Close the tube and incubate for 10 minutes at room temperature.4. Briefly vortex the tube and then do a quick spin (less than 5000xg) to concentrate the liquid at the bottom.5. Store the suspended plasmid at -20°C. The DNA is stable for at least one year from date of shipping when stored at -20°C.
RefSeq:	NM_144878.1 , NP_659127.1
RefSeq Size:	1787 bp
RefSeq ORF:	1683 bp
Locus ID:	226564
UniProt ID:	Q8VHG0
Cytogenetics:	1 70.34 cM
Gene Summary:	This protein is involved in the oxidative metabolism of a variety of xenobiotics such as drugs and pesticides.[UniProtKB/Swiss-Prot Function]