

Product datasheet for **MG223276**

Phf8 (NM_177201) Mouse Tagged ORF Clone

Product data:

Product Type:	Expression Plasmids
Product Name:	Phf8 (NM_177201) Mouse Tagged ORF Clone
Tag:	TurboGFP
Symbol:	Phf8
Synonyms:	9830141C09Rik; mKIAA1111
Mammalian Cell Selection:	Neomycin
Vector:	pCMV6-AC-GFP (PS100010)
E. coli Selection:	Ampicillin (100 ug/mL)



[View online »](#)

ORF Nucleotide Sequence:

>MG223276 representing NM_177201
 Red=Cloning site Blue=ORF Green=Tags(s)

TTTTGTAATACGACTCACTATAGGGCGGCCGGGAATTCGTCGACTGGATCCGGTACCGAGGAGATCTGCC
 GCC**CGGATCGCC**

ATGGCCTCGGTGCCTGTGTATTGCCTCTGTGCGACTGCCTTATGATGTGACCCGCTTCATGATCGAGTGTG
 ACATGTGCCAGGACTGGTTTCACGGCAGTTGTGTTGGTGTGAGGAGGAGAAGGCTGCTGATATTGATCT
 TTACCACTGCCCTAACTGTGAGGCTTACATGGACCTTCCATTATGAAAAACGTCGTGGATCTTCCAAA
 GGACATGATAATCACAAGGGGAAGCCACTGAAGACTGGAAGCTCTATGTTTATCCGAGAAGCTTCGGGGCA
 GAACCTTTGACAGCTCAGATGAAGTATTCTGAAGCCACTGGAAGTCAGCTGACTGTGGAATTCTTGGA
 AGAGAATAGCTTCAGCGTGCCTATCCTTGTCTTGAAGAAGGATGGGTGGGGATGACATTACCCTCTCCA
 TCATTCAGTGTGAGGGATGTGGAACACTATGTTGGTCTGACAAAGAGATTGATGTGATTGATGTGGCCC
 GCCAGGCTGACTGCAAGATGAACTCGGTGATTTTGTCAAATACTATTACAGTGGGAAGAGGGAAAAAGT
 CCTCAATGTCATTAGTTTGAATTCTCCGATACCAGGCTTCAAACCTCGTGGAAACACCCAGGATTGTT
 CGCAAGCTGTCATGGGTGGAGAAGCTTGTGGCCAGAGGAATGTGTCTTTGAGAGACCAATGTGCAGAAGT
 ACTGCCTCATGAGTGTGCGGGATAGCTATACAGATTTTACATTGACTTTGGTGGGACCTCAGTTTGGTA
 CCATGTGCTTAAGGGTGAGAAGATCTTCTACCTGATCCGCCCAACAAATGCTAATCTGACTCTCTTTGAG
 TGCTGGAGTAGCTCCTCAATCAGAACGAGATGTTCTTTGGTGACCAAGTGGAAAAGTGCTACAAGTGT
 CTGTGAAGCAAGGACAAACACTGTTTATCCTACAGGATGGATACATGCTGTGTTAACACCCGTGGACTG
 CTTAGCATTCCGGAGGAACTTCTTACACAGTCTTAACATTGAAATGCAACTCAAGGCTTATGAAATTGAG
 AAGAGGCTGAGCACAGCAGACCTTTTCAAGTTTCCCAACTCGAGACCATCTGTTGGTATGTGGGAAAAC
 ATATTCTGGACATCTTTGAGGCTTACGAGAAAATAGAAGACACCCTGCCTCCTACCTGGTCCATGGTGG
 TAAAGCTCTGAACCTTGGCATTAGAGCTTGGACAAAGAAAGAAGCTTTGCCAGACCACGAGGATGAGATC
 CCAGAGACAGTGCAGGACTGTACAGCTCATTAAAGATCTGGCTAGGGAGATCCGTCTGTTGAATTCAACA
 TGAGTGGTACCAGCTTGAATGATTAGATGATGACTCAGCAGACATGGACCTTGTGGCAGTGAGAACCC
 TCTGGCCCTGTTGATGGCTAATGGCAGTACGAAGAGGATGAAGAGTGTATCCAAATCTCGGAGAGCCAAA
 ATTGCAAAGAAGGTAGACAGTGAAGACTGGTAGCAGAACAGGTCATGGGAGATGAATTTGACTTGGATT
 CAGATGATGAGCTGCAGATTGACGAGAGATTGGGAAAGGAAAAGGCGAACCTGTTAATAAGATCAAAT
 TCCCCGGAAGTTGCCCGTGCAAAACCTTGCTCTGACCCCAACCGAATTCGTGAACCTGGAGAAGTTGAG
 TTTGACATTGAGGAGGACTATACCACAGATGAGGACATGGTGGAAAGGGTTGAAAGCAAGCTTGGGAATG
 GGAGTGGAGCCGGTGAATTCTTGATCTACTTAAGGCCAGCAGGACAGTGGGGGGACCTGACTATGCTGC
 CCTCACTGAGGCCCCAGCCTCCCCAGCACTCAAGAGGCCATCCAGGGCATGTTGTGTATGGCAACCTG
 CAGTCTCATCATCCTCACCACTACCTCCAGTCTGCAGGCTTGGTGGACTGGAGGGCAAGAAAAGAGCA
 GCGGGAGCTCCAGCAGTGGCCTGGGCACTGTGTCTAGTAGTCTGCTTCCAGCGCACCCAGGGGAAGCG
 GCCCATCAAGAGGCCAGCATACTGGAAAACGAGAGTGAAGAGGAGGAGAATGCCAGTCTTGATGAGCAA
 GACAGCTTGGGAGCATGCTTCAAGGATGCTGAGTATATCTATCCATCTCTGGAGTCTGATGATGACC
 CTGCTTTGAAATCTCGACCCAAGAAAAAGAAGAATTCAGATGATGCTCCATGGAGTCTTAAGCCCGTGT
 GACTCCAACCCATACCAAGCAGGACCGTCTGTTCTGAGGGGACCAGAGTTGCCTCCATTGAGACAGGC
 TTGGCTGCAGCAGCTGCAAAGCTTGCCAGCAGGTAAGAGTTGACACCCAGCTGGTGGCCCTGCTACTGA
 TGACT

ACGCGTACGCGGCCGCTCGAG - GFP Tag - GTTTAA

Protein Sequence: >MG223276 representing NM_177201
Red=Cloning site Green=Tags(s)

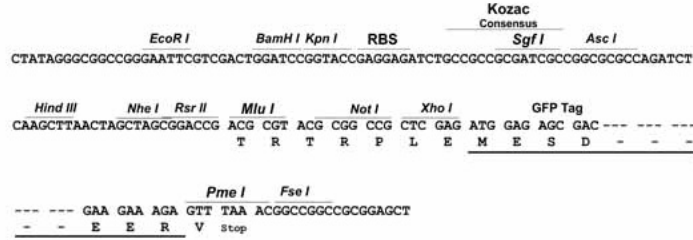
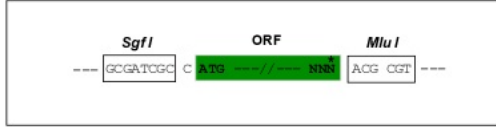
```
MASVPVYCLCRLPYDVTRFMIECDMCQDWFHGSVCVGVVEEKAADIDL YHCPNCEVLHGPSIMKKRRGSSK
GHDNHKGKPLKTGSSMFIRELRGRTFDSSDEVILKPTGSQLTVEFLEENSFSVPILVLKKDGLGMTLPSP
SFTVRDVEHYVGS DKEIDVIDVARQADCKMKLGDFVKYYS GKREKVLNVISLEFSDTRL SNL VETPRIV
RKL SWVENLWPEECVFERPNVQKYCLMSVRDSYDFHIDFGGTSVWYHVLKGEKIFYLIRPTNANLTLFE
CWSSSNQNMFFGDQVEKCYKCSVKQGQTLFIPTGWIHAVLTPVDCLAFGGNFLHSLNIEMQLKAYEIE
KRLSTADL FKFPNFETICWYVGKHILDIFRGLRENRHPASYLVHGGKALNLAFRAWTKKEALPDHEDEI
PETVRTVQLIKDLAREIRLVEFNMSGTSLNDSDDSDADMDLDGSENPLALLMANGSTKRMKSVSKSRRAK
IAKKVDSARLVAEQVMGDEFDLDSDELQIDERLGKEKANLLIRSKFPRKLPRAKPCSDPNRIREPGEVE
FDIEEDYTTDEDMVEGVESKLGNGSGAGGILDLLKASRQVGGPDYAALTEAPASPSTQEAIQGMLCMANL
QSSSSSPATSSLQAWWTGGQERSGSSSSSGLGTVSSSPASQRTPGKRPIKRPAYWKNESEEEENASLDEQ
DSL GACFKDAEYIYPSLESDDDDPALKSRPKKKKNSDDAPWSPKARVTPTLPKQDRPVREGTRVASIETG
LAAAAAKLAQQVRVDTQLVALLLMT
```

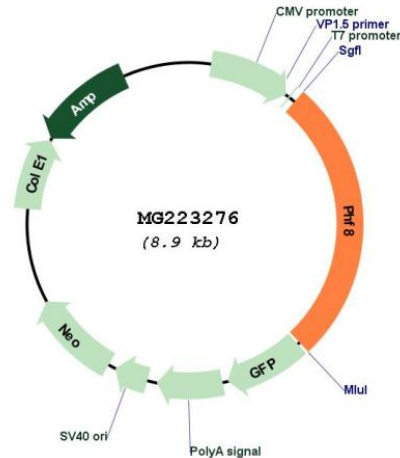
TRTRPLE - GFP Tag - V

Restriction Sites: SgfI-MluI

Cloning Scheme:

Cloning sites used for ORF Shutting:



Plasmid Map:


ACCN: NM_177201

ORF Size: 2385 bp

OTI Disclaimer: The molecular sequence of this clone aligns with the gene accession number as a point of reference only. However, individual transcript sequences of the same gene can differ through naturally occurring variations (e.g. polymorphisms), each with its own valid existence. This clone is substantially in agreement with the reference, but a complete review of all prevailing variants is recommended prior to use. [More info](#)

OTI Annotation: This clone was engineered to express the complete ORF with an expression tag. Expression varies depending on the nature of the gene.

Components: The ORF clone is ion-exchange column purified and shipped in a 2D barcoded Matrix tube containing 10ug of transfection-ready, dried plasmid DNA (reconstitute with 100 ul of water).

Reconstitution Method:

1. Centrifuge at 5,000xg for 5min.
2. Carefully open the tube and add 100ul of sterile water to dissolve the DNA.
3. Close the tube and incubate for 10 minutes at room temperature.
4. Briefly vortex the tube and then do a quick spin (less than 5000xg) to concentrate the liquid at the bottom.
5. Store the suspended plasmid at -20°C. The DNA is stable for at least one year from date of shipping when stored at -20°C.

RefSeq: [NM_177201.5](#), [NP_796175.1](#)

RefSeq Size: 3732 bp

RefSeq ORF: 2388 bp

Locus ID: 320595

UniProt ID: [Q80TJ7](#)

Cytogenetics: X F3

Gene Summary:

Histone lysine demethylase with selectivity for the di- and monomethyl states that plays a key role cell cycle progression, rDNA transcription and brain development. Demethylates mono- and dimethylated histone H3 'Lys-9' residue (H3K9Me1 and H3K9Me2), dimethylated H3 'Lys-27' (H3K27Me2) and monomethylated histone H4 'Lys-20' residue (H4K20Me1). Acts as a transcription activator as H3K9Me1, H3K9Me2, H3K27Me2 and H4K20Me1 are epigenetic repressive marks. Involved in cell cycle progression by being required to control G1-S transition. Acts as a coactivator of rDNA transcription, by activating polymerase I (pol I) mediated transcription of rRNA genes. Required for brain development, probably by regulating expression of neuron-specific genes. Has activity toward H4K20Me1 only when nucleosome is used as a substrate and when not histone octamer is used as substrate. May also have weak activity toward dimethylated H3 'Lys-36' (H3K36Me2), however, the relevance of this result remains unsure in vivo. Specifically binds trimethylated 'Lys-4' of histone H3 (H3K4me3), affecting histone demethylase specificity: has weak activity toward H3K9Me2 in absence of H3K4me3, while it has high activity toward H3K9me2 when binding H3K4me3. [UniProtKB/Swiss-Prot Function]