

Product datasheet for **MG223272**

lqgap2 (NM_027711) Mouse Tagged ORF Clone

Product data:

Product Type: Expression Plasmids
Product Name: lqgap2 (NM_027711) Mouse Tagged ORF Clone
Tag: TurboGFP
Symbol: lqgap2
Synonyms: 4933417J23Rik; A630053O10; AI788777
Mammalian Cell Selection: Neomycin
Vector: pCMV6-AC-GFP (PS100010)
E. coli Selection: Ampicillin (100 ug/mL)
ORF Nucleotide Sequence: >MG223272 representing NM_027711
Red=Cloning site Blue=ORF Green=Tags(s)

TTTTGTAAACGACTCACTATAGGGCGGCCGGAATTCGTCGACTGGATCCGGTACCGAGGAGATCTGCC
 GCCGCGATCGCC

ATGCCGCACGAAGAGCTGCCGTCGTTGCAACGGCCCCGCTACGGCTCAATCGTGGATGATGAAAGGCTGT
 CTGCAGAGGAGATGGATGAGAGGAGGCGACAGAACATCGCCTATGAATACTTGTGTACCTGGAGGAAGC
 CAAGAGATGGATGGAAGTCTGCTTAGTTGAAGAATTGCCACCAACCACTGAACTGGAAGAAGGGCTCCGG
 AATGGGGTCTACCTCGCCAAGTTAGCCAAGTTCTTCGCTCCGAAAATGGTATCAGAGAAGAAGATCTATG
 ATGTGGAGCAG

ACGCGTACGCGGCCGCTCGAG - GFP Tag - GTTTAA

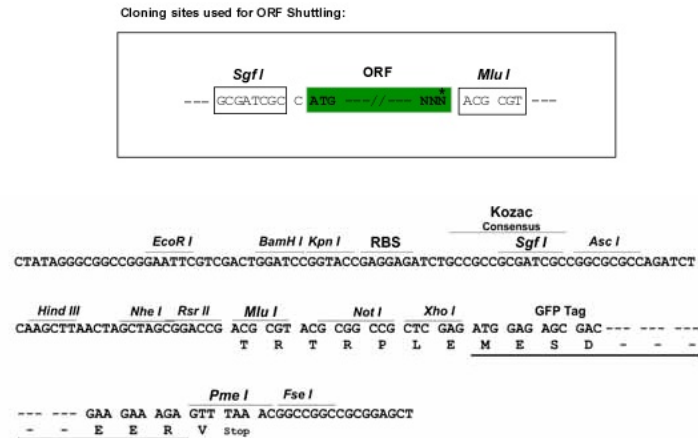
Protein Sequence: >MG223272 representing NM_027711
Red=Cloning site Green=Tags(s)

MPHEELPSLQRPYGSIVDDERLSAEEMDERRRQNIAYEYLCHLEEAKRWMEVCLVEELPPTTELEEGLR
 NGVYLAKLAKFFAPKMVSEKKIYDVEQ

TRTRPLE - GFP Tag - V

Restriction Sites: SgfI-MluI


[View online »](#)

Cloning Scheme:


ACCN: NM_027711

ORF Size: 291 bp

OTI Disclaimer: The molecular sequence of this clone aligns with the gene accession number as a point of reference only. However, individual transcript sequences of the same gene can differ through naturally occurring variations (e.g. polymorphisms), each with its own valid existence. This clone is substantially in agreement with the reference, but a complete review of all prevailing variants is recommended prior to use. [More info](#)

OTI Annotation: This clone was engineered to express the complete ORF with an expression tag. Expression varies depending on the nature of the gene.

Components: The ORF clone is ion-exchange column purified and shipped in a 2D barcoded Matrix tube containing 10ug of transfection-ready, dried plasmid DNA (reconstitute with 100 ul of water).

Reconstitution Method:

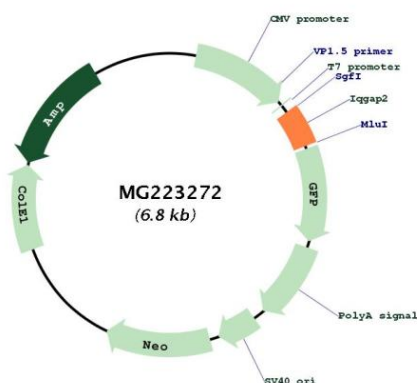
1. Centrifuge at 5,000xg for 5min.
2. Carefully open the tube and add 100ul of sterile water to dissolve the DNA.
3. Close the tube and incubate for 10 minutes at room temperature.
4. Briefly vortex the tube and then do a quick spin (less than 5000xg) to concentrate the liquid at the bottom.
5. Store the suspended plasmid at -20°C. The DNA is stable for at least one year from date of shipping when stored at -20°C.

Note: Plasmids are not sterile. For experiments where strict sterility is required, filtration with 0.22um filter is required.

RefSeq: [NM_027711.1](#), [NP_081987.1](#)

RefSeq Size:	5771 bp
RefSeq ORF:	4728 bp
Locus ID:	544963
UniProt ID:	Q3UQ44
Cytogenetics:	13 50.26 cM
Gene Summary:	Binds to activated CDC42 and RAC1 but does not seem to stimulate their GTPase activity. Associates with calmodulin.[UniProtKB/Swiss-Prot Function]

Product images:



Circular map for MG223272