

## Product datasheet for **MG223261**

### Mest (NM\_008590) Mouse Tagged ORF Clone

#### Product data:

Product Type:	Expression Plasmids
Product Name:	Mest (NM_008590) Mouse Tagged ORF Clone
Tag:	TurboGFP
Symbol:	Mest
Synonyms:	AA408879; AI256745; Peg1
Mammalian Cell Selection:	Neomycin
Vector:	pCMV6-AC-GFP (PS100010)
E. coli Selection:	Ampicillin (100 ug/mL)
ORF Nucleotide Sequence:	>MG223261 representing NM_008590 Red=Cloning site Blue=ORF Green=Tags(s)

TTTTGTAATACGACTCACTATAGGGCGCCGGAATTCGTCGACTGGATCCGGTACCGAGGAGATCTGCC  
GCC**CGATCGCC**

ATGGTGC GCCGAGATCGCTTGC GCAGGATGAGAGAGTGGTGGTCCAAGTAGGGCTCCTGGCTGTGCCCT  
TGCTGGCTGCGTACCTGCACATCCCGCCCCCTCAGCTCTCCCCTGCTCTGCACTCATGGAAGACTTCTGG  
CAAGTTTTTACCTACAAAGGCCTACGCATCTTCTACCAAGATTCTGTCGGTGTGGTCGGAAGCCCTGAG  
ATAGTTGTGCTTTTACATGGCTTTCCAACATCCAGCTATGACTGGTACAAGATCTGGGAAGGGCTGACCC  
TGAGGTTCCATCGAGTGATCGCCCTTGATTTCTTAGGCTTTGGCTTCAGTGACAAGCCGAGACCACATCA  
GTACTCCATATTTGAGCAGGCCAGCATCGTAGAGTCCCTTCTGCGGCACCTGGGGCTCCAGAACCGCAGA  
ATCAACCTGCTGTCTCACGATTATGGAGATATCGTTGCTCAGGAACTGCTGTACAGGTACAAGCAGAATC  
GATCTGGCCGGCTCACCATAAAGAGTCTCTGTCTGTGCAATGGAGGTATCTTTCCCTGAGACGCATCGTCC  
TCTCCTTCTCCAAAAGCTCCTCAAAGACGGAGGTGTGCTTTCCCCATCCTCACCAGGCTCATGAATTTCT  
TTCGTGTTCTCTCGAGGTCTCACTCCAGTCTTTGGACCGTATACTCGACCCACTGAGAGTGAGCTGTGGG  
ACATGTGGGCTGTGATTCGCAACAATGACGGCAACCTGGTCATCGACAGTCTTTTACAGTACATTAATCA  
AAGGAAGAAATTCAGAAGACGCTGGGTGGGAGCGCTTGTCTGTGTCCATCCCCATTATTTTATCTAT  
GGCCATTGGATCCTATAAATCCGATCCAGAGTTTTTGGAGCTGTACAGGAAAACGCTGCCGCGGTCCA  
CAGTGTGATTCTGGATGACCACATTAGCCACTACCCACAGCTAGAGGATCCCATGGGCTTCTTGAATGC  
ATATATGGGCTTCATCAACTCCTTC

**ACGCGT**ACGCGGCCGCTCGAG - GFP Tag - GTTTAA



[View online »](#)

**Protein Sequence:** >MG223261 representing NM\_008590  
 Red=Cloning site Green=Tags(s)

```
MVRRDRLRRMREWWVQVGLLAVPLLAAYLHIPPQLSPALHSWKTSKFFTYKGLRIFYQDSVGVGSPE
IVVLLHGFPSTSSYDWKIWEGLTLRFHRVIALDFLGFGFSDKPRPHQYSIFEQASIVESLLRHLGLQNR
INLLSHDYGDIVAQELLRYKQNRSGRLTIKSLCLNNGGIFPETHRPLLKLLKDGGLVSPILTRLMNF
FVFSRGLTPVFGPYTRPTESELWDMWAVIRNNDGNLVIDSLLQYINQRKFRRRWVGALASVSIPIHFIY
GPLDIPNYPFLELYRKTLPSTVSIILDDHISHYPQLEDPMGFLNAYMGFINF
```

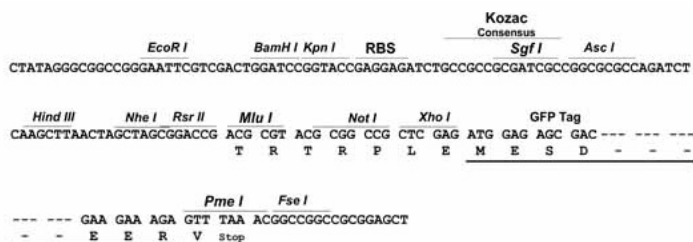
TRTRPLE – GFP Tag – V

**Chromatograms:** [https://cdn.origene.com/chromatograms/ja2417\\_f06.zip](https://cdn.origene.com/chromatograms/ja2417_f06.zip)

**Restriction Sites:** SgfI-MluI

**Cloning Scheme:**

Cloning sites used for ORF Shuttling:



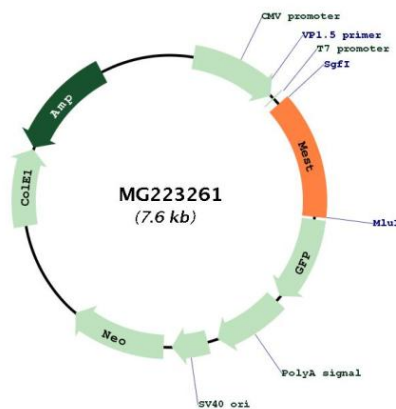
**ACCN:** NM\_008590

**ORF Size:** 1005 bp

**OTI Disclaimer:** Due to the inherent nature of this plasmid, standard methods to replicate additional amounts of DNA in *E. coli* are highly likely to result in mutations and/or rearrangements. Therefore, OriGene does not guarantee the capability to replicate this plasmid DNA. Additional amounts of DNA can be purchased from OriGene with batch-specific, full-sequence verification at a reduced cost. Please contact our customer care team at [custsupport@origene.com](mailto:custsupport@origene.com) or by calling 301.340.3188 option 3 for pricing and delivery.

The molecular sequence of this clone aligns with the gene accession number as a point of reference only. However, individual transcript sequences of the same gene can differ through naturally occurring variations (e.g. polymorphisms), each with its own valid existence. This clone is substantially in agreement with the reference, but a complete review of all prevailing variants is recommended prior to use. [More info](#)

<b>OTI Annotation:</b>	This clone was engineered to express the complete ORF with an expression tag. Expression varies depending on the nature of the gene.
<b>Components:</b>	The ORF clone is ion-exchange column purified and shipped in a 2D barcoded Matrix tube containing 10ug of transfection-ready, dried plasmid DNA (reconstitute with 100 ul of water).
<b>Reconstitution Method:</b>	<ol style="list-style-type: none"><li>1. Centrifuge at 5,000xg for 5min.</li><li>2. Carefully open the tube and add 100ul of sterile water to dissolve the DNA.</li><li>3. Close the tube and incubate for 10 minutes at room temperature.</li><li>4. Briefly vortex the tube and then do a quick spin (less than 5000xg) to concentrate the liquid at the bottom.</li><li>5. Store the suspended plasmid at -20°C. The DNA is stable for at least one year from date of shipping when stored at -20°C.</li></ol>
<b>RefSeq:</b>	<a href="#">NM_008590.2</a> , <a href="#">NP_032616.1</a>
<b>RefSeq Size:</b>	2579 bp
<b>RefSeq ORF:</b>	1008 bp
<b>Locus ID:</b>	17294
<b>UniProt ID:</b>	<a href="#">Q07646</a>
<b>Cytogenetics:</b>	6 12.53 cM

**Product images:**

Circular map for MG223261