

Product datasheet for **MG223236**

Acin1 (NM_019567) Mouse Tagged ORF Clone

Product data:

Product Type:	Expression Plasmids
Product Name:	Acin1 (NM_019567) Mouse Tagged ORF Clone
Tag:	TurboGFP
Symbol:	Acin1
Synonyms:	2610036I19Rik; 2610510L13Rik; Acinus; acinusL; acinusS; Acn; C79325; mKIAA0670
Mammalian Cell Selection:	Neomycin
Vector:	pCMV6-AC-GFP (PS100010)
E. coli Selection:	Ampicillin (100 ug/mL)



[View online »](#)

ORF Nucleotide Sequence:

>MG223236 representing NM_019567
 Red=Cloning site Blue=ORF Green=Tags(s)

TTTTGTAATACGACTCACTATAGGGCGGCCGGAATTCGTCGACTGGATCCGGTACCGAGGAGATCTGCC
 GCC**CGCATCGCC**

ATGTCTCCGGCTGATCGTGCCTTTACCAATACAATAGAGTCTGCTTACTACCAGCAACCTGGCCCTC
 TTCTCTCTTCTCCAGAGAGACCAGTCCAGCCGAACTCGGGTTTGCCAAAGGATAAACAGCACTTC
 CAGGGGGAGAAAAAATAATGATGTTCTCAGACAGCAGAGCAGGTGAAGAGAAGGAGGAAGTGACCATG
 GACACCAGTGAAAAACAGACCTGAAAATGAGGTGCCTGAGCCTCCTCTGCCTGTTGCAGACCAAGTCAGCA
 ATGATGAGCGCCAGAGGGTGGTCTGAAGAAGAGGAAAAAGAGAGTTTCGATGCCAAAGTCATTCAA
 GAGGAAAACTCCGTTGTCTCAGCTACCAAGGGGGTCAAGCTGGAAACAGTGACACAGAGGGGGGCCAG
 CCTGGCCGAAAACGCCGTTGGGGAGCCAGCACTGCCGCGACACAGAAGAAACCGTCCATCAGTATCACCA
 CTGAGTCACTCAAGAGCCTCATCCCGACATCAAACCCCTGGCGGGCAGGAGGCTGTTGTGGATCTTCA
 TGCCGATGACTCCCGAATCTCTGAGGATGAGACAGAGCGTAATGGCGACGATGGGACCCATGACAAGGGA
 CTGAAGATATGCCGGACAGTCACTCAGGTAGTACCCGCAGAGGGCCAGGAGAATGGGCAGAGGGAAGAGG
 AAGAAGAGAAAGAGCCTGAAGCCGAGTGCCGGCGCCACCCAGGTGTCAGTGGAGGTTGCCTTGCCCCC
 ACCTGTGGAGCACGAAGTAAAGAAAGTAACATTAGGAGATACCTTAACCCGGAGGTCATCAGCCAAACAG
 AAGTCTGGAGTTTCCATTACAATTGATGACCCAGTCCGGACCCGCCAGGTGCCCTCCCCACCCAGGGGCA
 AGATCAGTAACATTGTCCACATCTCAAACCTGGTTCGTCCTTCACTTTAGGCCAGCTGAAGGAATTATT
 GGGGCGTACAGGAACCTTGGTGAAGAGGCTTCTGGATAGACAAGATCAAATCTCATTGCTTTGTGACG
 TACTCTACAGTAGAGGAAGCCGTTGCCACCCGCACAGCTCTGCACGGGGTCAAGTGGCCCCAGTCCAACC
 CCAAATTCCTTTGTGCTGACTATGCTGAGCAAGATGAGCTGGACTATCACCGGGGACTCTTGGTAGATCG
 GCCATCTGAAACTAAGGCAGAGGAACAGGGAGCACCAAGGCCCTGCATCCCCACCCCAACCCCAAGTC
 CAGCCACCCGCCACCCCGGGCTGAGCAGCGGGAGCAGGAAAGGGCTGTTTCGAGAGCAATGGGCAGAAC
 GGGAACCGGAAATGGAGCGCCGGGAGAGGACTCGGTCTGAGAGAGAATGGGATCGGGACAAAGTTCGAGA
 GGGACCCCGCTCCCGATCACGGTCCCGTGACCGCCCGGAAAGAGCGAGCAAAATCTAAAGAAAAGAAAG
 AGTGAAAAGAAAAGAAAAGCCAGGAGGAGCCACCTGCCAAGCTGCTGGATGACCTTCCGTAAGACTA
 AGGCAGCTCCCTGCATCTATTGGCTCCCTCTGACTGAGAGCCAAATTGTTGAGAAGGAGGCAGAGCAAGC
 TGAACGGGCCAAGGAGCGGGAGAAGCGGCGAAAAGAACGAGAAGAAGAAGAAAGAAAGAACGGGAGAAG
 GAAGCTGAGCGGGAACGGAACCGGCAGCTAGAACGGGAGAAGAGGAGGGAGCACAGCAGGGAGAGAGAGA
 GGGACAGGGAGAGAGCGGGACAGGGGTGACCGAGAGCGGGAGAGGGAGCGAGACCGAGACCGAGGCAG
 GGAGAGGGATCGCAGAGACACCAAGCGCCACAGCAGAAGCGGAGTCAAGCAGACCTGTACGGGACCGG
 GGTGGGCGCCGC

ACGCGTACGCGGGCCGCTCGAG - GFP Tag - GTTTAA

Protein Sequence:

>MG223236 representing NM_019567
 Red=Cloning site Green=Tags(s)

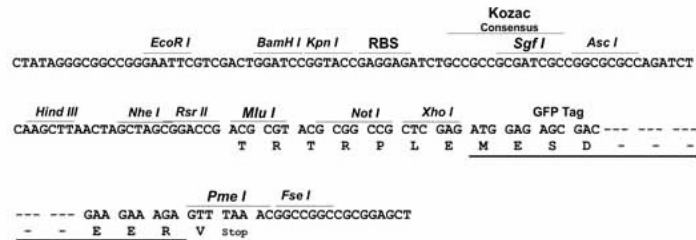
MSPADRCRFTNTIESAYYQQGPLPPLPPERPVPNSGFAKGINSTSRGRKKIMMFSDSRAGEEKEEVTM
 DTSENRPENEVPEPLPVADQVSNDRPEGGAEKEEKESSMPKSFKRKISVVSATKGVQAGNSDTEGGQ
 PGRKRRWGASTAATQKKPSISITTESLKSILPDIKPLAQEAVVDLHADDSETERNGDDGTHDKG
 LKICRTVTQVPAEQENGQREEEEEKEPEAELPAPPQVSVEVALPPPVEHEVKKVTLGDTLTRRSISQQ
 KSGVSIIDDPVRTAQVPSPPRGKISNIVHISNLVRPFTLQQLKELLGRTGTLVEEAFWIDKIKSHCFVT
 YSTVEEAVATRTALHGKWPQSNPKFLCADYAEQDELDYHRGLLVDRPSETKAEQAGAPRPLHPPPPPV
 QPPHPRAEQREQERAVREQWAEREREMERRERTRSERWDRDKVREGPRSRSRDRRRRERAKSKEKK
 SEKKEKAQEPPAKLLDDLFRKTKAAPCIYWLPLTESQIVQKEAEQAERAKEREKRRKEREEREEQKEREK
 EAERERNRQLEREKRREHSRERERDRERERDRGRERERDRDRGRERDRRDTKRHSRSRSRSTPVRDR
 GGRR

TRTRPLE - GFP Tag - V

Restriction Sites: SgfI-MluI

Cloning Scheme:

Cloning sites used for ORF Shutting:



ACCN: NM_019567

ORF Size: 1902 bp

OTI Disclaimer: The molecular sequence of this clone aligns with the gene accession number as a point of reference only. However, individual transcript sequences of the same gene can differ through naturally occurring variations (e.g. polymorphisms), each with its own valid existence. This clone is substantially in agreement with the reference, but a complete review of all prevailing variants is recommended prior to use. [More info](#)

OTI Annotation: This clone was engineered to express the complete ORF with an expression tag. Expression varies depending on the nature of the gene.

Components: The ORF clone is ion-exchange column purified and shipped in a 2D barcoded Matrix tube containing 10ug of transfection-ready, dried plasmid DNA (reconstitute with 100 ul of water).

Reconstitution Method:

1. Centrifuge at 5,000xg for 5min.
2. Carefully open the tube and add 100ul of sterile water to dissolve the DNA.
3. Close the tube and incubate for 10 minutes at room temperature.
4. Briefly vortex the tube and then do a quick spin (less than 5000xg) to concentrate the liquid at the bottom.
5. Store the suspended plasmid at -20°C. The DNA is stable for at least one year from date of shipping when stored at -20°C.

RefSeq: [NM_019567.3](#), [NP_062513.3](#)

RefSeq Size: 2519 bp

RefSeq ORF: 1905 bp

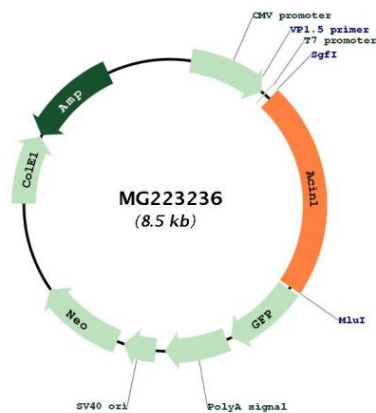
Locus ID: 56215

UniProt ID: [Q9JIX8](#)

Cytogenetics: 14 C2

Gene Summary: Auxiliary component of the splicing-dependent multiprotein exon junction complex (EJC) deposited at splice junction on mRNAs. The EJC is a dynamic structure consisting of core proteins and several peripheral nuclear and cytoplasmic associated factors that join the complex only transiently either during EJC assembly or during subsequent mRNA metabolism. Component of the ASAP complexes which bind RNA in a sequence-independent manner and are proposed to be recruited to the EJC prior to or during the splicing process and to regulate specific excision of introns in specific transcription subsets; ACIN1 confers RNA-binding to the complex. The ASAP complex can inhibit RNA processing during in vitro splicing reactions. The ASAP complex promotes apoptosis and is disassembled after induction of apoptosis. Involved in the splicing modulation of BCL2L1/Bcl-X (and probably other apoptotic genes); specifically inhibits formation of proapoptotic isoforms such as Bcl-X(S); the activity is different from the established EJC assembly and function. Induces apoptotic chromatin condensation after activation by CASP3. Regulates cyclin A1, but not cyclin A2, expression in leukemia cells (By similarity).[UniProtKB/Swiss-Prot Function]

Product images:



Circular map for MG223236