

Product datasheet for **MG223225**

Abt1 (NM_013924) Mouse Tagged ORF Clone

Product data:

Product Type:	Expression Plasmids
Product Name:	Abt1 (NM_013924) Mouse Tagged ORF Clone
Tag:	TurboGFP
Symbol:	Abt1
Mammalian Cell Selection:	Neomycin
Vector:	pCMV6-AC-GFP (PS100010)
E. coli Selection:	Ampicillin (100 ug/mL)
ORF Nucleotide Sequence:	>MG223225 representing NM_013924 Red=Cloning site Blue=ORF Green=Tags(s)

TTTTGTAATACGACTCACTATAGGGCGGCCGGAATTCGTCGACTGGATCCGGTACCGAGGAGATCTGCC
GCC**CGATCGCC**

ATGGTAAAGCGGGAGAGTTGGTGGAGCAGAAAAGGCTGCGATGGAGGAAGAGGCGAATGCAGAGGCGG
CGGAGGATCAGGAGGAGCCCGAGGACACGGCTGCAGCAGCAGCAGCAAGAAGAAGAAGGATAGTTCC
GGGGATTGTGTACCTGGGCCACGTCCCAGCGGATTCCGGCCCTTACGTACGCAACCTGCTCAGCGCC
TACGGCAGGTGGGACGCGTTTTCTCCAGGCCGAGGACCACTTTGTGAAACGCAAGAAGAAGGCAGCCG
CGGCCGAGGAGAAAGAAGGGAGCTAAGTACAGCAAGGACTATACCGAAGGCTGGGTGGAGTCCGAGA
CAAGCGTGTAGCCAAGCGAGTGGCAGCCAGTCTACATAACACGCCCATGGGCGCCCGCAAGCGCAGCCCG
TTCCGTTATGACCTGTGGAACCTCAAGTATTTGCATCGTTTTACTTGGTCCCACCTCAGTGAACACCTTG
CCTTTGAGCGCCAAGTACGAAGGCAACGCCTGAGAGCAGAGGTCGCCAAGCAAAGAGAGAGACTGACTT
CTATCTTCGAAACGTAGAACAGGACAACACTTCTTGCAGCTGATGGGGATGCTACTCGGCCAAATAGC
TCCTGGACATTCACCCAGCGTCCCAGTGCAGGAGTTTAGGGCCCGAAAGCTGCACGGCCAGGAGGGC
GGGAAAGAGCACGGCTGGCTAATGTCGAGGACCAGGCCGATCCAACAGAGGGCTCCTTGCCAAGATCTT
TGGAGCCCTCTACCTGCAGAGCAAGGAAAAACCG

AGCGGACCGACGCGTACGCGGCCGCTCGAG - GFP Tag - GTTTAA



[View online »](#)

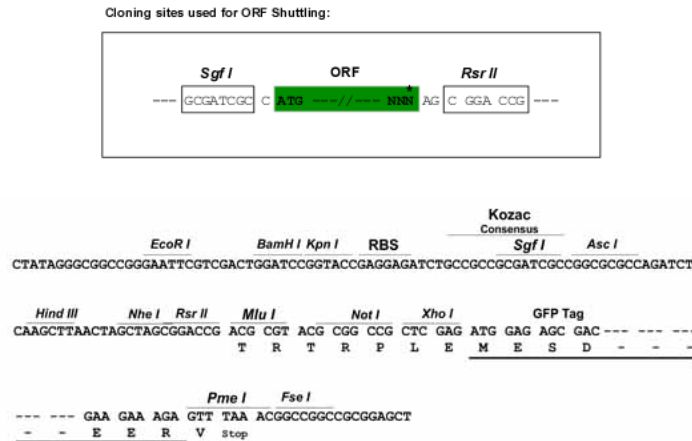
Protein Sequence: >MG223225 representing NM_013924
 Red=Cloning site Green=Tags(s)

MVKAGELVEQQKAAMEEEANAEAAEDQEPEPTACSSSSKKKKKVVPGIYYLGHVPPFRPLHVRNLLSA
 YGEVGRVFFQAEDHFVKKKKKAAAAAGGKKGAKYSKDYTEGWVEFRDKRVAKRVAASLHNTPMGARKRSP
 FRYDLWNLKYLHRFTWSHLSEHLAFERQVRRQRLRAEVAQAKRETDYFLRNVEQGQHFLAADGDATRPNS
 SWTFTQRPTQEFRARKAARPGGRERARLANVEDQARSNRGLLAKIFGAPLPAESKEKP

SGPTRRRLE - GFP Tag - V

Restriction Sites: SgfI-RsrII

Cloning Scheme:



ACCN: NM_013924

ORF Size: 807 bp

OTI Disclaimer: The molecular sequence of this clone aligns with the gene accession number as a point of reference only. However, individual transcript sequences of the same gene can differ through naturally occurring variations (e.g. polymorphisms), each with its own valid existence. This clone is substantially in agreement with the reference, but a complete review of all prevailing variants is recommended prior to use. [More info](#)

OTI Annotation: This clone was engineered to express the complete ORF with an expression tag. Expression varies depending on the nature of the gene.

Components: The ORF clone is ion-exchange column purified and shipped in a 2D barcoded Matrix tube containing 10ug of transfection-ready, dried plasmid DNA (reconstitute with 100 ul of water).

Reconstitution Method:

1. Centrifuge at 5,000xg for 5min.
2. Carefully open the tube and add 100ul of sterile water to dissolve the DNA.
3. Close the tube and incubate for 10 minutes at room temperature.
4. Briefly vortex the tube and then do a quick spin (less than 5000xg) to concentrate the liquid at the bottom.
5. Store the suspended plasmid at -20°C. The DNA is stable for at least one year from date of shipping when stored at -20°C.

RefSeq: [NM_013924.3](#), [NP_038952.1](#)

RefSeq Size: 4456 bp

RefSeq ORF: 810 bp

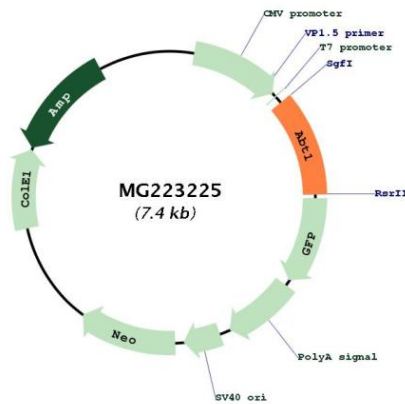
Locus ID: 30946

UniProt ID: [Q9QYL7](#)

Cytogenetics: 13 A3.1

Gene Summary: Could be a novel TATA-binding protein (TBP) which can function as a basal transcription activator. Can act as a regulator of basal transcription for class II genes.[UniProtKB/Swiss-Prot Function]

Product images:



Circular map for MG223225