

Product datasheet for **MG223212**

Kdm5a (NM_145997) Mouse Tagged ORF Clone

Product data:

Product Type:	Expression Plasmids
Product Name:	Kdm5a (NM_145997) Mouse Tagged ORF Clone
Tag:	TurboGFP
Symbol:	Kdm5a
Synonyms:	AA409370; C76986; Jarid1a; Rbbp2; RBP2
Mammalian Cell Selection:	Neomycin
Vector:	pCMV6-AC-GFP (PS100010)
E. coli Selection:	Ampicillin (100 ug/mL)
ORF Nucleotide Sequence:	>MG223212 representing NM_145997 Red=Cloning site Blue=ORF Green=Tags(s)

TTTTGTAATACGACTCACTATAGGGCGGCCGGAATTCGTCGACTGGATCCGGTACCGAGGAGATCTGCC
GCC**CGATCGCC**

ATGGCGTCCGTGGGCCCGGGGGCTACGCGCGGAGTTCGTGCCACCGCCGAGTGCCCGGTCTTTGAGC
CCAGTTGGGAGGAGTTCACAGACCCGCTGAGTTTTATCGGGCGCATCCGGCCCTTTCGGGAGAAAACGGG
CATCTGCAAAATCCGGCCACCAAGGATTGGCAACCTCCATTTGCCTGTGAAGTAAAAACCTTCCGTTTC
ACTCCTAGAGTCCAGCGCTGAATGAACCTTGGCAACTGACTAGAGTAAGATTGGACTTCTTGGATCAAC
TGGCAAAATTTGGGAACCTCAAGGATCTACATTGAAGATCCCTGTGGTGGAGAGAAAAATCCTGGATTT
GTATGCTTTAAGCAAGATTGTTGCCAGCAAAGGAGTTTTGAAATAGTACCAAAGAGAAGAAATGGTCT
AAAGTGGGTAGCCGCTTGGGATATCTGCCAGAAAAGGAAGTGGTCTCTTTTGAAGTCACTATGAAA
GAATTCTACCCATATGAACCTTTCCAATCTGGTGTGAGCCTTATGGGTGTACAAATGCCTGATTTAGA
TCTTAAAGAAAAGTTGAGGCTGAGGTTCTCAGCACTGACATCCAGCCTTCCCCAGAGCGGGGAACAAGA
ATGAATATTCCACCAAAGAGAACAAGACGAGTTAAGTCTCAGTCAGACTCTGGAGAAGTAAATAGAAACA
CAGAACTGAAGAACTTCAGATTTTGGGGCTGGACCAAGTTGTGGCCTGGCAGTAGGAGCAAAAGA
TAAAGAAGATGAAGTCACCCGAAGAAGAAAAGTTACCAACAGTCCAGATGCATTTAACATGCAAAATGAGA
CAACGGAAGGAACCTCTCTGTTAACTTTGTTGATCTCTATGTTTGCATGTTTTGTGGTGGAGGAAATA
ATGAGGATAAACTGCTTTTGTGTGATGGGTGCGATGACAGCTATCATACATTTTGTCTACTTCCACCCT
ACCTGATGTCCTCAAGGAGACTGGAGGTGCTTAAATGTGTTGCTGAGGAATGTAACAACTCGAGAA
GCCTTTGGATTTGAGCAAGCTGTAAGAGAATATACACTTCAAAGCTTTGGAGAGATGGCAGATAATTTTA
AATCTGATTATTTCAATATGCCAGTCCATATGGTCTACAGAGCTAGTAGAAAAAGAAATCTGGCGGCT
AGTAAGTAGCATTGAAGAAGATGTTATTGTAGAGTATGGAGCTGATATCTCTCAAAGATTTTGGAAAGT
GGATTTCTAAAAGGATGGTCAAAGAAAGATGTTGCCAGAAGAAGGAATATGCACCTTCTGGTTGGA
ATTTGAATAACATGCCTGTTCTGGAGCAGTCCGTTCTTGCACATATTAATGTGGACATTTCTGGTATGAA
GGTGCCATGGCTCTATGTGGGAATGTGCTTTTCTCTTTTGTGGCATATTGAAGTCACTGGAGTTAT



View online »

TCCATTA ACTACTTGCATTGGGGCGAGCCAAAGACATGGTATGGTGTACCATCTCATGCTGCAGAACAAC
 TGGAGGAGGTGATGAGGGAGCTGGCCCTGAGTTATTTGAATCCCAGCCTGATCTCTACATCAGTTAGT
 AACCATCATGAACCCAAATGTGCTCATGGAGCATGGTGTGCCTGTGTACAGGACTAATCAGTGTGCTGGA
 GAGTTTGTGGTGACGTTTCTCGTGCCTATCACTCTGGATTTAACAGGGATACTAATTTGCCGAAGCGG
 TGAACCTCTGTACTGTGACTGGTTGCCATTGGACGTCAGTGTGTAATCACTATCGACGGCTCAGGCG
 CCATTGTGTCTTTTACATGAGGAATCATTTTCAAGATGGCAGCAGATCCAGAATGCTTAGATGTGGGG
 CTGGCTGCCATGGTATGCAAAGAGTTGACTCTCATGACTGAAGAAGAAACACGATTGAGAGAAATGTTG
 TTCAAATGGGTGTCGTGATGTCAGAAGAAGAAGTCTTTGAACTTGTTCCTGATGATGAGCGGCAGTGTTC
 AGCATGCAGAACTACATGTTTTCTCTCAGCTCTCACATGCTCCTGTAATCCGGAGCGACTTGTATGTCTG
 TATCATCCAACCTGATTTGTGCTCTTGCCTCATGCAGAACAATGTCTTAGGTACCGCTATCCACTAGAAG
 ACCTTCCATCTCTGCTTTATGGTGTCAAAGTGAGAGCACAATCCTATGACACTTGGGTCAATCGTGTAC
 AGAAGCATTGTCAGTAGCTTCAACCATAAGAAAGATTTGATTGAATTGAGAGTAATGCTGGAAGATGCT
 GAGGATAGGAAATACCCAGAGAATGATCTTTTCAAAGCTCAGGGACCGGTGAAAGAAGCTGAGACCT
 GTGGTTCTGTGGCTCAGCTGCTTCTGAGCAAAAAGCAAAAACACAGGCAGAGCTCAGATAGTGGGAAGAC
 TCGGACCAAACCTGACAGTAGAAGATTGAAGGCCCTTTGTCCAACAACCTTGTAGTCTTCCGTGTGCATC
 AGCCAAACTCGACAAGTAAAGAATCTGCTGGATGATGTAGAAGAATTTTATGAACGTGCCAGGAGGCCA
 TGATGGATGAAACCCAGATTCTTCAAACCTCAAATGTTAATAGACATGGGCTCTAGTCTCTATGTGGA
 GCTACCTGAATTGCCCGACTAAAGCAAGAGCTCCAGCAGGCTCGATGGCTGGATGAAGTAAAGGCTAACT
 CTATCAGATCCACAACAAGTCACTTTGGATGTCATGAAGAAATGATTGACTCTGGCGTAGGCTTGGCAC
 CTCACCATGCTGTAGAAAAAGCAATGGCCGAACACAGGAACCTTACAGTCTCTGAACGATGGGAAGA
 GAAGGCTAAGGTCTGCCTGCAAGCAAGACCTCGGCACAGTATGGCAAATTTAGAAAATTTGTGAATGAA
 GCCAAGAACATCCAGCCTTTCTACCAATGTGTTGCTTAAAAGAAGCCTTACAAAAGGCTCGTGAAT
 GGACAGCTAAAGTGGAAGCTATTCAGAGTGGCAACAACATGCTTACTTGGAAACAGCTTGAGAGCCTATC
 TGCTAAAGGACGCCCTATCCCTGTGCGTCTTGATGCTTCAAGCTTGCCTCAAGTGGAGTCAACAGTACAGCAGCA
 CGGGCCTGGAGAGAACGTACTGGGCGGACCTTCTTAAAAAGAATTCCAGCCATACATTGTTACAGGTGC
 TAAGTCCACGAACTGACATTGGTGTATATGGGAGTGGTAAAAACAGGAGGAAAAAGGTAAGAAATAAT
 AGAAAAAGAAAAGGAGAAGGACCTCGACCTTGAGCCTTTGAGTGACTTAGAGGAAGGACTGGAGGAGTCA
 AGAGATACAGCCATGGTGGTGGCAGTTTTCAAAGAACGAGAGCAAAAGGAGATTGAAGCCATGCATTCCC
 TCAGAGCAGCCAACTAGCCAAGATGACAATTGTGGAGCGCATAGAAGAAGTGAATTTTGTATTTGCCG
 CAAGACAGCCAGTGGGTTATGCTACAGTGTGAGCTCTGCAAAGACTGGTTCATAACAGCTGTGTTCCC
 CTTCTAAATCAAGTTCCAGAAAAAGGATCCAGCTGGCAGGCTAAAGATGTAATAATCCTTTGCCCTC
 TTTGCATGAGATCTCGGAGGCCAAGGCTAGAGACTATTCTGTCACTCCTGGTATCCCTTCAGAAGTTGCC
 TGTACGGTTGCCGGAAGGAGAAGCACTGCAAGTGTGGACAGAACGTGCCATGAGTTGGCAAGATAAAGCA
 CGCCAAGCTTTAGCCACAGATGAACTGTCTCTGCCCTGGCCAAGCTCTCTGTGCTAAGCCAGCGTATGG
 TGGAAACAAGCAGCTAGAGAAAAAAGTAAAGATTATCAGTGCAGAACTCCAAAAAGCAGCTGCCAATCC
 AGATTTACAGGGACACTTACCTAGTTTCCAGCAGTCTGCTTTAACCGGGTGGTGAAGTGTATCATCT
 TCCCCCACCACAATGGACTATGATGATGAAGAAACAGATTCTGATGAAGATATTCGGGAGACATACG
 GCTATGACATGAAGGATACAGCCAGCGTGAAGTCTCTAGTAGTCTGGAACCAATCTCTTTTGTGATGA
 AGAGATTTCCATCAAGTCTGAGGAAGTGGTACTCACATGTGGACGGCACCGTCACTCTGTGCAGAGCAT
 GCATATTTCTGCTTCAAAGAGTTGTTCTCAAGGTTCTAGCACTCCAAGAAAGCAGCCTCGGAAGAGCC
 CTTTGGTTCCAGAAAGTTTGGAGCCTCCAGTATTGGAATTGTCTCCTGGAGCAAAAGCCAGTTGGAAGA
 ACTCATGATGGTTGGAGACCTCCTAGAAGTGTCTCTGGATGAGACACAACACATTTGGCGGATTTTGCAG
 GCCACACATCCACCCTCAGAGGACAGATTCTTACATATCATGGAGGATGATAGCATAGAAGAGAAACCAT
 TAAAAATGAAAGGAAAGGACTCTTCAAGAGAAGAAACGAAACGGAAGCTAGAAAAGGTAGAACAGCTTTT
 TGGAGAAGGAAAAAGAGACCAAGGAGCTAAAGAAAAAGATAAACCTAAAAAGAAGAAATTAATAA
 AATGTGGACAAAACAAAAGAGCTGAATAAATTGGCCAAGAAGTTAGCTAAAGAAGAAGAGCGAAAGAAAA
 AGAAAGAAAAGGCTGCTCGCCCAAAGTGGAGCTTGTGAAAGAGAGCACGGAGAAGAAACGGGAGAGGAA
 GGTGTTGGATATCCCCTCAAAGTATGACTGGTCCGGGGCAGAGGAGTCTGATGATGAGAATGCTGTGTGT
 GCAGCCCAAAACTGCCAAAGGCCGTGAAGGACAAGGTAGACTGGGTACAGTGTGATGGTGGCTGTGATG
 AGTGGTTTCATCAAGTTTGTGTTGGTGTATCCGCAGAAATGGCTGAAAATGAAGATTACATCTGTATAAA
 CTGTGCAAAGAAGCAGGGGCCAGATAGCCAGGCCAAGCACCACTCTCCCTTCTAATGAGCTACAAA
 CTACCAATGGAGGATCTTAAAGAGACCAGT

ACGCGTACGCGGCCGCTCGAG - GFP Tag - GTTTAA

Protein Sequence:

>MG223212 representing NM_145997
 Red=Cloning site Green=Tags(s)

MASVGGGYAAEFVPPPECPVFEPSSWEEFTDPLSFIGRIRPFAEKTGICKIRPPKDWQPPFACEVKTFRF
 TPRVQRLNELEAMTRVRLDFLDQLAKFWELQGSTLKIPVVERKILDLYALSKIVASKGGFEIVTKEKKWS
 KVGSRLLGYLPGKGTGSLKSHYERILYPYELFQSGVSLMGVQMPDLDLKEKVEAEVLSTDIQPSPERGTR
 MNIPPKRTRRVKSSQSDSSEVNRNTELEKLLQIFGAGPKVVLAVGAKDKEDVTRRRKVTNRSDAFNMQMR
 QRKGTLSVNFVDLYVCMFCGRGNNEKLLCDGCDDSYHTFCLLPPLPDVPGKDWRCPCVAAEENKPRE
 AFGFEQAVREYTLQSGFEMADNFKSDYFNMPVHMVPTLVEKEFWRLVSSIEEDVIVEYGADISSKDFGS
 GFKPKDGQRKMLPEEEYALSGWNLNMPVLEQSVLAHINVDISGMKVPWLYVGMCFSSFCWHIEDHWSY
 SINYLHWGEPKTYWVPSHAAEQLEEVRELAPLFEFQSDLLHQLVTIMNPVLMHGVPPVYRTNQCGAG
 EFVVTFFRAYHSGFNQGYNFAEAVNFCTADWLPVIGRQCVNHYRRLRRHCVFSHEELIFKMAADPECLDVG
 LAAMVCKELTLMTEEETRLRESVVMGVMSEEEVFELVPDDERQCSACRTTCFLSALTCSCNPERLVCL
 YHPTDLCSCPMQNKCLRYRPLEDLPSLLYGKVKVRAQSYDTWVNRVTEALSASFNHKDLIELRVMLEDA
 EDKYPENDLFRKLRDAVKEAETCGSVAQLLLSKKQKHRQSSDSGKTRTKLTVHEELKAFVQQLVSLPCVI
 SQTRQVKNLDDVEEFHERAQEAMMDETPDSSKLQMLIDMGSSLYVELPELPRKQELQARWLDEVRLT
 LSDPQQVTLDMKKLIDSGVGLAPHHAVEKAMAELOELLTVSERWEEKAKVCLQARPRHSMANLENI VNE
 AKNIPAFLPNVL SLKEALQKAREWAKVEAIQSGNNYAYLEQLESLSAKGRPIPVRDLALPQVESQVAAA
 RAWRERTGRTFLKKNSSHTLLQVLSRPTDIGVYSGGNRRKVKVKEIEKEKEKDLLEPLSDLEEGLEES
 RDTAMVAVFKEREQKEIEAMHSLRAANLAKMTIVERIEEVKFCICRKTASGFMLQCELCCKDWFHNSCPV
 LPKSSSQKKGSSWQAKDVKFLCPLCMRSRRPRLETILSLLVSLQKLPVRLPEGEALQCLTERAMSWQDKA
 RQALATDELSALAKLSVL SQRMVQAAREKTEKII SAELQKAAANPDLQGHLPFSFQSAFNRVSSVSS
 SPHQTMDDYDEETDSDEDIETYGYDMKDTASVKSSSSLEPNLFCDEEIPKSEEVVTMMWTAPSFCAEH
 AYSSASKSCSQSSSTPRKQPRKSPLVPRSLEPPVLELSPGAKAQLEELMMVGDLLLEVSLDETHIWRILQ
 ATHPPSEDRFLHIMEDDSIEEKPLKMKGKDSSEKKRKRKLEKVEQLFGGKQKTKELKKIDPKKKKKLKL
 NVDKSKELNKLAKKLAKKEERKKKKEKAAAKVELVKESTEKKRERKVL DIPSKYDWSGAESDDENAVC
 AAQNCQRPCKDKVDWVQCDGGCDEWFHQVCVGSVAEMAENEDYICINCAKKQGPDPSPGQAPPPFLMSYK
 LPMEDLKETS

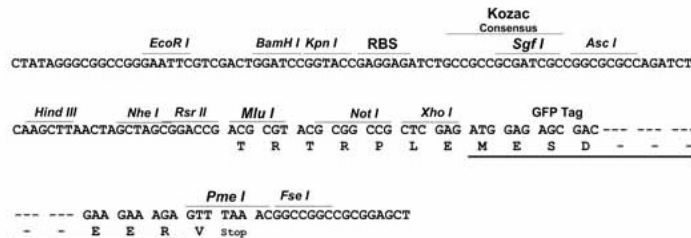
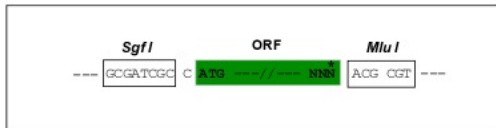
TRTRPLE - GFP Tag - V

Restriction Sites:

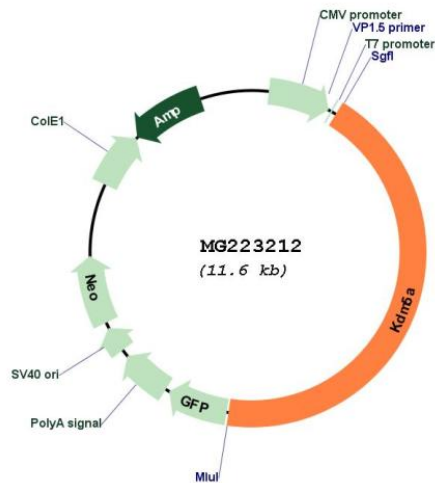
Sgfl-MluI

Cloning Scheme:

Cloning sites used for ORF Shuttling:



Plasmid Map:



ACCN: NM_145997

ORF Size: 5070 bp

OTI Disclaimer: The molecular sequence of this clone aligns with the gene accession number as a point of reference only. However, individual transcript sequences of the same gene can differ through naturally occurring variations (e.g. polymorphisms), each with its own valid existence. This clone is substantially in agreement with the reference, but a complete review of all prevailing variants is recommended prior to use. [More info](#)

OTI Annotation: This clone was engineered to express the complete ORF with an expression tag. Expression varies depending on the nature of the gene.

Components:	The ORF clone is ion-exchange column purified and shipped in a 2D barcoded Matrix tube containing 10ug of transfection-ready, dried plasmid DNA (reconstitute with 100 ul of water).
Reconstitution Method:	<ol style="list-style-type: none">1. Centrifuge at 5,000xg for 5min.2. Carefully open the tube and add 100ul of sterile water to dissolve the DNA.3. Close the tube and incubate for 10 minutes at room temperature.4. Briefly vortex the tube and then do a quick spin (less than 5000xg) to concentrate the liquid at the bottom.5. Store the suspended plasmid at -20°C. The DNA is stable for at least one year from date of shipping when stored at -20°C.
RefSeq:	NM_145997.2 , NP_666109.2
RefSeq Size:	10969 bp
RefSeq ORF:	5073 bp
Locus ID:	214899
UniProt ID:	Q3UXZ9
Cytogenetics:	6 56.95 cM
Gene Summary:	Histone demethylase that specifically demethylates 'Lys-4' of histone H3, thereby playing a central role in histone code. Does not demethylate histone H3 'Lys-9', H3 'Lys-27', H3 'Lys-36', H3 'Lys-79' or H4 'Lys-20'. Demethylates trimethylated and dimethylated but not monomethylated H3 'Lys-4' (PubMed:17320161, PubMed:17320163). Regulates specific gene transcription through DNA-binding on 5'-CCGCC-3' motif. May stimulate transcription mediated by nuclear receptors. Involved in transcriptional regulation of Hox proteins during cell differentiation (By similarity). May participate in transcriptional repression of cytokines such as CXCL12. Plays a role in the regulation of the circadian rhythm and in maintaining the normal periodicity of the circadian clock. In a histone demethylase-independent manner, acts as a coactivator of the CLOCK-ARNTL/BMAL1-mediated transcriptional activation of PER1/2 and other clock-controlled genes and increases histone acetylation at PER1/2 promoters by inhibiting the activity of HDAC1 (PubMed:21960634). Seems to act as a transcriptional corepressor for some genes such as MT1F and to favor the proliferation of cancer cells (By similarity).[UniProtKB/Swiss-Prot Function]