

Product datasheet for **MG223203**

Rbm46 (NM_001146328) Mouse Tagged ORF Clone

Product data:

Product Type:	Expression Plasmids
Product Name:	Rbm46 (NM_001146328) Mouse Tagged ORF Clone
Tag:	TurboGFP
Symbol:	Rbm46
Synonyms:	EG633285; ENSMUSG00000033882; Gm761
Mammalian Cell Selection:	Neomycin
Vector:	pCMV6-AC-GFP (PS100010)
E. coli Selection:	Ampicillin (100 ug/mL)



[View online »](#)

ORF Nucleotide Sequence:

>MG223203 representing NM_001146328
 Red=Cloning site Blue=ORF Green=Tags(s)

TTTTGTAATACGACTCACTATAGGGCGGCCGGGAATTCGTCGACTGGATCCGGTACCGAGGAGATCTGCC
 GCC**GCGATCGCC**

ATGAATGAAGAAAACACTGATGGTACAAATGGATGCAGTAAAGTGCCTACTGGCACTCAGAATGAAGCCC
 CATTGCTGGCTCTCATGAAAAGACTGGCTACAACATGGTCCAAGAAAATGGGCAAAGGAAATTTGGTGG
 TCCTCCTCCAGGTTGGGAAGGTCCACCTCCCCCTAGAGGTTGTGAAGTTTTTGTGGAAAAATACCTCGT
 GATATGTATGAAGATGAACTGGTTCCTGTATTTGAAAGAGCTGGGAAGATATATGAATTTAGACTGATGA
 TGGAAATTTAGTGGTGAAGATAGAGGTTATGCTTTTGTGATGTATACTACTAAAGAAGAAGCCCAATTAGC
 CATCCGGATTCTAACAATTATGAAATTCGACCAGGGAAGTTTATTGGTGTGTGTGAAGCTTGGATAAT
 TGCAGATTATTTATTGGAGCAATCCCAAAGAAAAGAAAAGGAAGAAATTTGGATGAAATGAAGAAAG
 TTACCGAAGGTGTGTGGATGTGATTGTTATCCAAGTCAACTGACAAAACCAAGAACCCTGGGTTTGC
 CTTTGTGAGTATGAGTCCCACAGAGCTGCTGCTATGGCCAGGAGAAAGCTGATTCCAGGAACATTTCAA
 CTCTGGGGCCACACCATTAGGTAGATTGGGCTGATCCAGAGAAAAGAAAGTTGATGAGGAAACCATGCAAA
 GAGTTAAAGTTCTGTATGTAAGAAATCTAATGATCTCAACTACAGAGGAGACAATTAAGCAGAGTTCAG
 TAAATTCAGCCTGGCGAGTGGAGCGAGTGAAGAAACTGAGAGATTATGCCTTTGTTCACTTTTTCCAC
 CGAGAAGATGCAGTGGCTGCCATGTCTGTGATGAATGGAAAGTGCATTGATGGAGCCAGTATTGAGGTAA
 CCCTGGCAAAGCCAGTAAATAAGGAAAATACTGGCGACAGCATCTTAATGGCCAGATCAGCCCCAATTC
 TGAACCACTACTGTATATGCTAACAAGGAAGAGAGTCACTCCAAAAGTCTAGGCAAGCCACCAACTCTC
 CCCACTCGTCTCAATGGTCAGCATAGTCCAAGCCCCCTGAGATTGAAAGATGTACTTACCCTTTTTTTC
 CTGGAACAAAGCTGACCCCAATTAGTATGTATTCTTTAAAAATCCAATCATTTTAAATCTCGAGTATGCA
 TTTGGATTATTACTGCAACAAAAATAATTGGGCACCACCAGAATATTATTATATTCAACAACCAGTCAG
 GATGGGAAAGTACTCTTGGTGTACAAGATGTTATCCCTGCAATCGCAAATGGATCTCAGAGTACTTCA
 TGCCAGATAAACTCTGCACAACGCTGGAGGATGCAAAGGAGCTGGCAGCTCAGTTTACACTGCTTCATTT
 GGACTTCAATTTCCGTCGACGCTCAATAAATAGTCTTTCCCTGTAGCACTACCCTCTCTCTGGGACT
 CCCAGCATGCTTCTTACACATCAAGGCCTTCTTCTTATCCAAGTATCCCTTGCACCAACAATATCAC
 TTGCTAATGGCAGCCATGTTGGACAACGACTGTATATCTCCAATCAGGCCTCATTCTTC

ACGCGTACGCGGCCGCTCGAG – GFP Tag – GTTTAA

Protein Sequence:

>MG223203 representing NM_001146328
 Red=Cloning site Green=Tags(s)

MNEENTDGTNGCSKVRTGTQNEAALLALMEKTYNMQVQENGQRKFGGPPPGWEGPPPPRGCEVFGKIPR
 DMYEDELVPVFERAGKIYEFRLMMEFSGENRGYAFVMTTKEEAQLAIRILNNYEIRPGKFIGVCVSLDN
 CRLFIGAIPKEKKKEEILDEMCKVTEGVVDVIVYPSATDKTKNRGFAFVEYESHRAAAMARRKLIPTGFQ
 LWGHTIQVDWADPEKEVDEETMQRVKVLYVRNLMI STTEETIKAEFKFKPGAVERVKKLRDYAFVHFFH
 REDAVAAMSVMNGKIDGASIEVTLAKPVNKENTWRQHLNGQISPENSELLVYANKEESHKSLGKPPPTL
 PTRLNGQHSPSPPEIERCTYPPFPGKLTPI SMYSLKSNHFN SAVMHLDYCNKNWAPPEYYLYSTTSQ
 DGKVLVYKIVIPAIANGSQSYFMPDKLCTTLEDAKELAAQFTLLHLDNFRRSSINSLSPVSTTLSSGT
 PSMLPYTSRPSYPSYPLSPTISLANGSHVQRLYISNQASFF

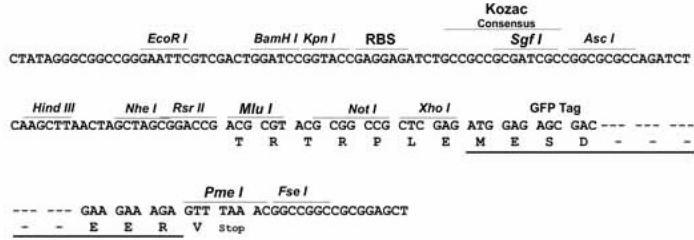
TRTRPLE – GFP Tag – V

Restriction Sites:

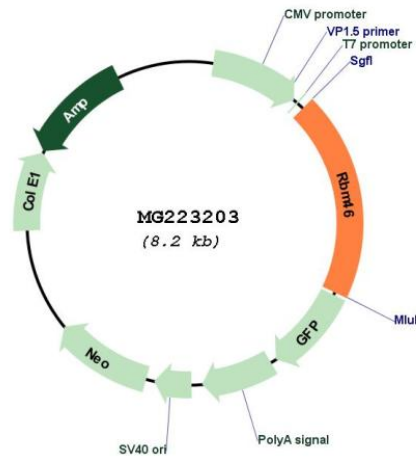
Sgfl-MluI

Cloning Scheme:

Cloning sites used for ORF Shutting:



Plasmid Map:



ACCN:	NM_001146328
ORF Size:	1599 bp
OTI Disclaimer:	The molecular sequence of this clone aligns with the gene accession number as a point of reference only. However, individual transcript sequences of the same gene can differ through naturally occurring variations (e.g. polymorphisms), each with its own valid existence. This clone is substantially in agreement with the reference, but a complete review of all prevailing variants is recommended prior to use. More info
OTI Annotation:	This clone was engineered to express the complete ORF with an expression tag. Expression varies depending on the nature of the gene.
Components:	The ORF clone is ion-exchange column purified and shipped in a 2D barcoded Matrix tube containing 10ug of transfection-ready, dried plasmid DNA (reconstitute with 100 ul of water).
Reconstitution Method:	<ol style="list-style-type: none">1. Centrifuge at 5,000xg for 5min.2. Carefully open the tube and add 100ul of sterile water to dissolve the DNA.3. Close the tube and incubate for 10 minutes at room temperature.4. Briefly vortex the tube and then do a quick spin (less than 5000xg) to concentrate the liquid at the bottom.5. Store the suspended plasmid at -20°C. The DNA is stable for at least one year from date of shipping when stored at -20°C.
RefSeq:	NM_001146328.2 , NP_001139800.1
RefSeq Size:	1789 bp
RefSeq ORF:	1602 bp
Locus ID:	633285
UniProt ID:	P86049
Cytogenetics:	3 E3