

## Product datasheet for **MG223193**

### Prp2 (NM\_031499) Mouse Tagged ORF Clone

#### Product data:

Product Type:	Expression Plasmids
Product Name:	Prp2 (NM_031499) Mouse Tagged ORF Clone
Tag:	TurboGFP
Symbol:	Prp2
Synonyms:	MP1; MP14
Mammalian Cell Selection:	Neomycin
Vector:	pCMV6-AC-GFP (PS100010)
E. coli Selection:	Ampicillin (100 ug/mL)
ORF Nucleotide Sequence:	>MG223193 representing NM_031499, <b>codon optimized</b> . <b>Due to the complexity of NM_031499, the ORF clone is codon optimized for mammalian Expression.</b> <b>The nucleotide sequence differs from the reference sequence, yet the amino acid sequence remains identical.</b>

Red=Cloning site Blue=ORF Green=Tags(s)

TTTTGTAATACGACTCACTATAGGGCGGCCGGAATTCGTCGACTGGATCCGGTACCGAGGATCTGCC  
GCC**CGGATCGCC**

ATGCTGGTGGTCCTTTTCACAGTAGCGTCTGGCACTCAGCTCCGCACAGGAGCCTAGAGAAGAAGCTTC  
AGAATCAGATTAGATTCTAATCAGCGCCCCCTCCAAGCGGGAGCCAGCCGAGCCGCCCGTTAACGG  
CTCCCAACAAGGACCTCCTCCACAGGGCGACCTCAACCCCGTCTCCACAAGGTCTCCACCTCCAGGA  
GGTCCACAGCCAAGACCTCCACAGGGACCCCTCCACCTGGGGTCCACAACCACGTCCGCCTCAGGGTC  
CGCCTCCTCAGGTGGTCTCAGCCAAGGCCACCTCAGGGTCCCCCTCCTCTGGAGGACCACAACCTCG  
GCCTCCTCAGGGTCCACCACCTCCTGGGGTCCACAGCAACGGCCCCCTCAGGGTCCACCTCCACAGGC  
GGTCTCAACAGAGGCCCTCCTCAGGGACCCCACTCCTGGTGGACCACAGCCTCGGCCACCACAGGGAC  
CCCCCTCCTCAGCAGGCCCTCAGCCAAGACCTCCTCAGGGCCACCACCACCGGGCCCTCATCTGAGGCC  
AACTCAGGGGCCACCACCAACCGGTGGTCCACAGCAGAGGTATCCACAGTCCCGCCACCGCTGGAGGC  
CCTCAACCTAGGCCACCTCAAGGTCTCCCCCTCCGGGAGGGCCACACCTCGCCCCACCAGGGTCCCC  
CGCCACCAGGCCAGCCGCGCCCAACTCAGGGCCACCTCCCACCGGTGGCCACAACAGCGACCACC  
ACAAGGCCCTCCACCACCGGTGGACCACAGCCTAGGCCACCTCAGGGACCTCCGCCTCCTACCGCCCT  
CAGCCTAGGCCTACACAAGGACCACACCAACTGGAGTCCCCAGCAGACCCCTCCACTTGTGAAACC  
CACAAGGACCTCCGAGGTAGGCTCAGGGACCACAG

**ACGCGT**ACGCGGCCGCTCGAG - GFP Tag - GTTTAA



[View online »](#)

**Protein Sequence:** >MG223193 representing NM\_031499  
Red=Cloning site Green=Tags(s)

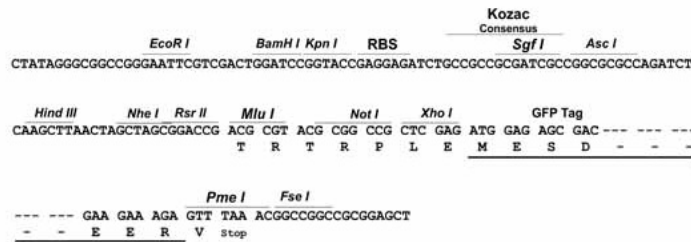
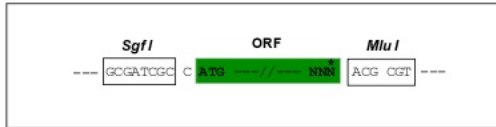
MLVVLFTVALLALSSAQEPREELQNQIQIPNQRPPPSGSQPRPPVNGSQGGPPPPGGPQPRPPQGPPPPG  
 GPQPRPPQGPPPPGGPQPRPPQGPPPPGGPQPRPPQGPPPPGGPQPRPPQGPPPPGGPQPRPPQGPPPPG  
 GPQQRPPQGPPPPGGPQPRPPQGPPPPAGPQPRPPQGPPPPGPHLRPTQGPPPTGGPQQRYPQSPPPPGG  
 PQPRPPQGPPPPGGPQPRPPQGPPPTGPQPRPPQGPPPTGGPQQRPPQGPPPPGGPQPRPPQGPPPPPTGP  
 QPRPPQGPPHTGGPQQTPLLAGNPQGGPPQGRPQGFQ

TRTRPLE - GFP Tag - V

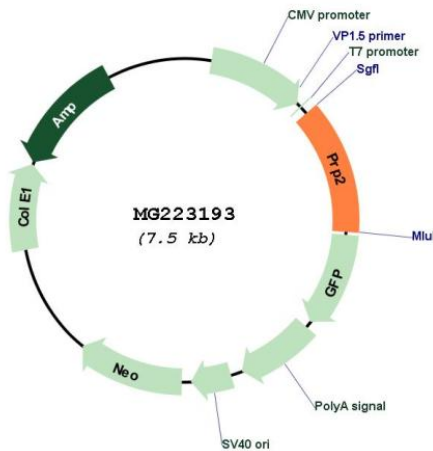
**Restriction Sites:** SgfI-MluI

**Cloning Scheme:**

Cloning sites used for ORF Shuttling:



**Plasmid Map:**



**ACCN:** NM\_031499

**ORF Size:** 948 bp

<b>OTI Disclaimer:</b>	The molecular sequence of this clone aligns with the gene accession number as a point of reference only. However, individual transcript sequences of the same gene can differ through naturally occurring variations (e.g. polymorphisms), each with its own valid existence. This clone is substantially in agreement with the reference, but a complete review of all prevailing variants is recommended prior to use. <a href="#">More info</a>
<b>OTI Annotation:</b>	This clone was engineered to express the complete ORF with an expression tag. Expression varies depending on the nature of the gene.
<b>Components:</b>	The ORF clone is ion-exchange column purified and shipped in a 2D barcoded Matrix tube containing 10ug of transfection-ready, dried plasmid DNA (reconstitute with 100 ul of water).
<b>Reconstitution Method:</b>	<ol style="list-style-type: none"><li>1. Centrifuge at 5,000xg for 5min.</li><li>2. Carefully open the tube and add 100ul of sterile water to dissolve the DNA.</li><li>3. Close the tube and incubate for 10 minutes at room temperature.</li><li>4. Briefly vortex the tube and then do a quick spin (less than 5000xg) to concentrate the liquid at the bottom.</li><li>5. Store the suspended plasmid at -20°C. The DNA is stable for at least one year from date of shipping when stored at -20°C.</li></ol>
<b>RefSeq:</b>	<a href="#">NM_031499.2</a> , <a href="#">NP_113687.2</a>
<b>RefSeq Size:</b>	951 bp
<b>RefSeq ORF:</b>	951 bp
<b>Locus ID:</b>	83380
<b>Cytogenetics:</b>	6 G1
<b>Gene Summary:</b>	This gene encodes a member of the heterogeneous family of proline-rich salivary glycoproteins. The expression of this gene is dramatically induced in the parotid and submandibular glands of mice by beta-adrenergic stimulation. The encoded protein serves an important dental function by protecting mice against toxic dietary polyphenols such as tannins and influence the visco-elastic properties of the mucus. This gene is located in a cluster of closely related salivary proline-rich proteins on chromosome 6. [provided by RefSeq, Nov 2015]