

Product datasheet for **MG223175**

Fbxl4 (NM_172988) Mouse Tagged ORF Clone

Product data:

Product Type:	Expression Plasmids
Product Name:	Fbxl4 (NM_172988) Mouse Tagged ORF Clone
Tag:	TurboGFP
Symbol:	Fbxl4
Synonyms:	A1836810; FBL4; FBL5
Mammalian Cell Selection:	Neomycin
Vector:	pCMV6-AC-GFP (PS100010)
E. coli Selection:	Ampicillin (100 ug/mL)



[View online »](#)

ORF Nucleotide Sequence:

>MG223175 representing NM_172988
 Red=Cloning site Blue=ORF Green=Tags(s)

TTTTGTAATACGACTCACTATAGGGCGGCCGGAATTCGTCGACTGGATCCGGTACCGAGGAGATCTGCC
 GCC**CGGATCGCC**

ATGTCACCACTCTTCCCATGTTAACAGTTCTGACCATGTTTTATTATATGTGCCTTCGGCTCGAGCCA
 GGACAGCTACAAGAGGAGATATGATGAACAGCCATAGGACTATAGTGCAACAGCCGACTTCCCCTCT
 CAATGCAGAGGTGGTCCAGTATGCTAAAGAAGTGGTGGATTTTCAGTTCCATTACGGCAGTGAGAACAGT
 ATGTCCTATACCATGTGGAATTTGGCAGGTGTACCAAAATGTTCCCAAGTTCTGGTGACTTCACGCAGA
 CGGCTGTGTTTCGAACTTATGGGACGTGGTGGGATCAGTGTCTAGTGCTTCTTCCATTACAGAAGGAC
 ACCGTCCAGTTTCCAGAGCCAGGACTATGTGGAAGTACTTTTGGAGCAGCAAGTGTACCCACGGCTGTC
 CATGTGCTGGAGACTTACCATCCTGGAGCAGTCATCAGAATTCTGGCCTGCTCAGCAAATCCCTACTCCC
 CAAATCCTCCAGCTGAAGTAAGATGGGAGATTCTTTGGTCAGAGAGACCTATGAAGGTGAATGCTTCCCA
 GGCTCGTCAGTTAAACCTTGATTAAGCAAATAAATTTCCCTACAAACCTCATACGACTGGAAGTCAAT
 AGTTCTCTTCTGGATTATTACACCGAACTAGATGCAAGTTGTGCTGCATGGTACGAAGGACAAGCCACTGC
 TCTCTCTCAAGACTGCTCTTGTAGACATGAATGATCTAGAAGATGACGACTATGAAGAGAAGGATGGCTG
 TGAGATGGATGCTCTTAACAAAAGTTTAGCAGTGTGCCCTTGGGGATGGGCCACATAATGGGTATTTT
 GACAACTACCATATGAGCTCATTCAACTGATTCTGAATCATCTTCTACTACCAGACCTGTGTAGATTAG
 CCCAGACTTGCAGGCTTCTCCACCAGCATTGCTGTGATCCTCTGCAATATATCCACCTCAACCTGCAGCC
 ATACTGGCCCGGCTGGACGACAGTCACTGGAGTTCTACAGGCTCGCTGTGTGCTTGTCCAGTGGCTT
 AATCTGTCTTGGACTGGCAACAGAGGGTTCATCTGTATCAGGATTTAGCAGGTTTCTAAAGGTGTGTG
 GGTTGAGTTAGTACGCCTTGAGTTATCCTGCAGCCACTTCTTAATGACACTTGCTTGGAGTTTATTC
 TGAAATGTGCCCAAATCTACAAGACTTAAATCTCTCATCCTGCGATAAACTCCACCTCAGGCTTTTGGC
 CATATTGCCAAGTTATGCAGCCTCAAGAGGCTTGTCTCTATCGGACAAAAGTAGAGCAAACAGCACTAC
 TGAGCATTTTGAAGTCTGTGCAGAGCTTACGACCTCAGCCTGGGCAGCTGTGTGATGATTGAAGATTA
 TGATGTGATAGCCAGCATGATAGGAGCCAAGTGTAAAACTGCGGACTTTGGATCTGTGGAGATGCAAG
 AATATCACCGAGAATGGGATAGCAGAGTTGGCTTCTGGCTGTGTTCTTCTTGAGGAAGTTGACCTTGGCT
 GGTGCCACCCTTCCAGAGCAGCACTGGGTGCTTGTGACTGGCAGCCAGCTCCCAAAGTTGCAGAA
 ACTCTTCTTACAGCTAACAGGTCTGTGTGACACAGACATAGAAGAACTGGCATTAATTGTACCAGA
 TTACAGCAACTGGACATATTAGGAACAAGAAATGGTAAGTCCAGCATCCTTGAAGAACTCCTGGAATCTT
 GCAAAGATCTTCCCTACTTACAGTGTCTTCTGTTCCAGATTGATAACAAGGCTGTGTTAGAGCTCAA
 CGCGAGCTTTCGAAAGTCTTCATAAAGAAGAGCTTTACTCAA

ACGCGTACGCGGCCGCTCGAG – GFP Tag – GTTTAA

Protein Sequence:

>MG223175 representing NM_172988
 Red=Cloning site Green=Tags(s)

MSPVFPMLTVLTMFYMCLRRRARTATRGDMMNSHRTIVSNSRTPSPLNAEVVQYAKEVVDVSSHYSSENS
 MSYTMWNLAGVPNVFPSSGDFQTAVFRTYGTWWDQCPSASLPFRRTSSFSQDYVELTFEQVYPTAV
 HVLETYHPGAVIRILACSANPSPNPPAEVRWEILWSERPKNVNASQARQFKPCIKQINFPTNLIRLEVN
 SSLLDYYTELDAVVLHGTDKPLLSTKALVDMNDLEDDDYEEKDGCMDALNKKFSSAALGDGPHNGYF
 DKLPYELIQLILNHLSPDLRLAQTCLLLHQHCCDPLQYIHLNLQPYWARLDDTLEFLQARCVLVQWL
 NLSWTGNRGIISVSGFSRFLKVCSELVRELESCSHFLNDTCLVISEMCPNLQDLNLSSCDKLPQAFG
 HIAKLCSLKRLVLYRTRKVEQTALLSILNFCAELQHLSLGSCVMIEDYDVIASMIKCKNLRDLWRCK
 NITENGLAELASGCVLLEELDLGWCPQLQSSTGCFVRLARQLPNLQKFLITANRVSVDTDIEELASNCTR
 LQLDLILGTRMVSASLRKLLSCKDLSLLDVDFSCQIDNKAVLELNASFPKVFIKKSFTQ

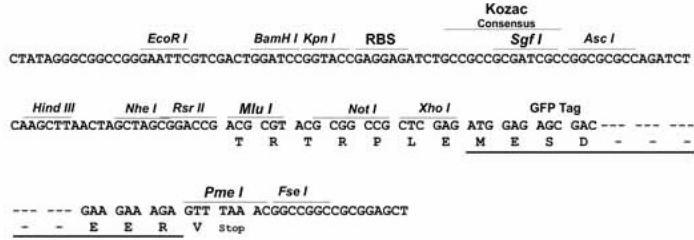
TRTRPLE – GFP Tag – V

Restriction Sites:

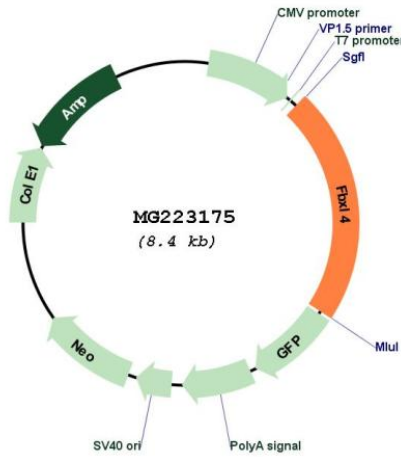
SgfI-MluI

Cloning Scheme:

Cloning sites used for ORF Shutting:



Plasmid Map:



ACCN: NM_172988
 ORF Size: 1863 bp

OTI Disclaimer:	The molecular sequence of this clone aligns with the gene accession number as a point of reference only. However, individual transcript sequences of the same gene can differ through naturally occurring variations (e.g. polymorphisms), each with its own valid existence. This clone is substantially in agreement with the reference, but a complete review of all prevailing variants is recommended prior to use. More info
OTI Annotation:	This clone was engineered to express the complete ORF with an expression tag. Expression varies depending on the nature of the gene.
Components:	The ORF clone is ion-exchange column purified and shipped in a 2D barcoded Matrix tube containing 10ug of transfection-ready, dried plasmid DNA (reconstitute with 100 ul of water).
Reconstitution Method:	<ol style="list-style-type: none"> 1. Centrifuge at 5,000xg for 5min. 2. Carefully open the tube and add 100ul of sterile water to dissolve the DNA. 3. Close the tube and incubate for 10 minutes at room temperature. 4. Briefly vortex the tube and then do a quick spin (less than 5000xg) to concentrate the liquid at the bottom. 5. Store the suspended plasmid at -20°C. The DNA is stable for at least one year from date of shipping when stored at -20°C.
RefSeq:	NM_172988.4 , NP_766576.1
RefSeq Size:	2479 bp
RefSeq ORF:	1866 bp
Locus ID:	269514
UniProt ID:	Q8BH70
Cytogenetics:	4 A3