

Product datasheet for **MG223147**

Cnbd2 (NM_027585) Mouse Tagged ORF Clone

Product data:

Product Type:	Expression Plasmids
Product Name:	Cnbd2 (NM_027585) Mouse Tagged ORF Clone
Tag:	TurboGFP
Symbol:	Cnbd2
Synonyms:	4921517L17Rik; 5430421B09Rik; Cris
Mammalian Cell Selection:	Neomycin
Vector:	pCMV6-AC-GFP (PS100010)
E. coli Selection:	Ampicillin (100 ug/mL)



[View online »](#)

ORF Nucleotide Sequence:

>MG223147 representing NM_027585
 Red=Cloning site Blue=ORF Green=Tags(s)

TTTTGTAATACGACTCACTATAGGGCGGCCGGAATTCGTCGACTGGATCCGGTACCGAGGAGATCTGCC
 GCC**CGGATCGCC**

ATGGACCGATCCGCGAATCCGGAAGCCGCCTCTACCAGTCACGTGAAGTTTGATCTGGGAAGTCCG
 TAGACATCAGCTCTACTGACACTAAGGATGGCGCACTGCAAGGTCCCCATTGGAGCCGGCGACAAGTC
 GGACACGACAGAGTCGAAATCTGAGTCGGGATCGGATTCCAGATCAGAGGAAGACAAAGGAGTCCGGCC
 TCGATTAAGGAGATAAAGGCGGAGACACCCCAACCGAAGGACCGTCTGGCGTGCAGATTAAGCTCAT
 GGTACAGAAGATAAAGAGCTGGACAGCAAAAAGAAAAGAACTGTACCAGCTCGTCATAGACATCAT
 CATGATGAACCGAGTGTGAAGATGTTCCGTCAAGGCCTCAGGGGATTCGGGAATATCAGATCATTGAG
 CCTGTTACAAGAAGCATCCTGACTTCTCTTCTGGGATAAAAAGAAGCAAGGCCGATCTCGTTTGTTA
 CCGAGGACTTTGCTGCACAGGAGGGTCACTTCCCTCCGAGGGCCATTTCTATCACACAGAAGAAGCCATC
 CTGGAGGACCCACAGGAGATCCAAGACCTCTGCAATATTCTTCAGGCTTAGATTGCTACCGCAGCTAC
 ACAGAGTCTCTACAGCTGCTCCTGGCCAAGGTCATACGCTTTGAAAGGTTTCGGTCCCGCGCGTATCG
 TCAAGAAGGGGCAGATGGCAATAGCTTTTATTTTATCTACCTGGGCACAGTGGCCATAACTGAGGACGA
 GGATGGGAGCAGTGCTTTCTGGACCCTCACCCAACTGCTGCACAGGGGTGGCTCCTTCGGGAAATG
 GGCCTTAAAGCACACAGTAAGGAGTGCCACGGTGGTCTGCATGGAGGAGACAGAGTTCCTGGTGGTGC
 ACAGAGAGGATTCGTTGCAAATAAGCTGGGTGACGAAGTTCAGAAGGAACTCAGTATCCGTACAATTT
 TTTTAGGAACTTGACATATCCAGTCTTGGTCTGAAGAGAAGCTCTGGAAGCTGGTGGCCTTGGGGAGG
 ATAGAGAGGTTCTCATACGGACAGATGGTGTCTAAAGACTTTATGAATTCGGCATTATCACATTTATCT
 GCCAGGGCAACTGTGAAATCCTGCGATTGGTAGCCCTGGGCGACTGCAGTGCCTATTACAAGTGGTCTG
 GCAGCAACTGGAGCTGCTGGATCACAACCTCTGAGAATTCATGACAATGAAATATCTCCAAGGAGAGA
 TTTAAGGAACTCCAGATCAAATCCTATCCTCTGCAGGATTTACGTATTTGAAACTTCTGCGTCTCCAGA
 AAGCCAGAGAGCAACAGGGAATAGACTTCCACGGCAAGATCAACAAGTAGAAAACACTCTCCCAAGTT
 GCTGGGCCCAAAGATCAAATCCAGGTACGGTCAATCCAGTCAAATGTTCCATGGTCAACACCAAGTTGGT
 GAACTCCCAAGGAGGCCATAGTGGGGTCTACATGAAGATCCACAAGACAGAGGAAGGAGAGATTGTGG
 GCCTTACCAGGCCTTTGTCCCGAAATCCAGCGAGATTGCCGGCCCTTATCCTTCTGAGCTTGGGATC
 AGAGTTGATACAAGTAAGAAAAGAGAAGTTTTATGACATGGTTGACGAGGAGACAAGAGCAAAGATAATA
 AAGATGGATGTGGACTATCCCAGCGATGAAGACCTGTGCCAGAGTTTCTGAAGGAAAACGACTATATTG
 TCTTTCGGAAGGATTTGCTGCAGTACTGGTGGAGCCCTCAATAAGTCACCATTATCCAGTCCAGAC
 CAAGAAGAAAGAGATCTACAACCACAAGTCTTTGTTTCTGGATCTGTGCAGCCTTGAAAAGAAGGTGAAG
 CAGCACTATCCCATTTTTCTGGCGCCCCAGAAATACCTGCCCCCTTGAGGGTTGTTCAAGCCATCTCAG
 CACCCCGCACAAAATCCAAGAATCCTGCCTCAATATAAGAATGCAGGGGTCTTATT

ACGCGTACGCGGGCCGCTCGAG – GFP Tag – GTTTAA

Protein Sequence: >MG223147 representing NM_027585
 Red=Cloning site Green=Tags(s)

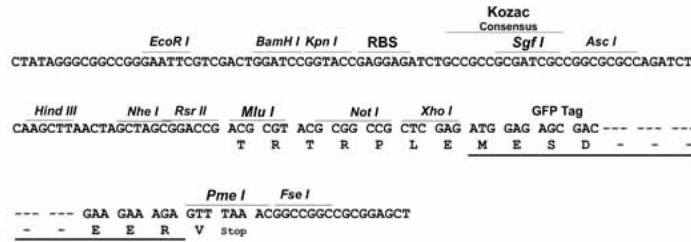
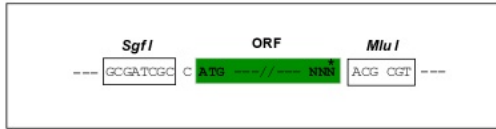
MDRSANPEAASSTSHVKFDLGSVDISSTDTKDGGTARSPLPADKSDTTESKSESGSDSRSEEDKESPA
 SIKEIKAETPQPKDRPGVQIKLSWSQKIKSWTAKKKRKL YQLVIDIIMNVRVCKMFRQGLRGFREYQIE
 PVHKKHPDFSFWDKQGRISFVTEDEFAAQEGHFPPRAISITQKKPSWRTHQEIQDL CNILQALDCYRSY
 TESLQLLLAKVIRFERFRRRRIVKKGQMGNSFYFYIYLGTVAITEDDGSFAFLDPHPTLLHRGGSFGEM
 GLLSTTVRSATVVCMEETEFLVVDREDFVANKLGDEVQKETQYRYNFRNLDIFQSWSEEKLVKLVALGR
 IERFSYGMVSKDFMNSAFITFCQGNCEILRLVALGDCSAYYKWWQQLLELDHKPLRIHDNEISPKER
 FKELQIKSYPLQDFTYLKLLRLQKAREQQGIDFHGKINKVENTLPKLLGPKIKSRYGHPVKCSMVNTKFG
 ELPKEAIVGVYMKIHKTEEGEIVGLHQAFVPEIQRDCRPFILLSLGSELIQVRKEKFYDMVDEETRAKII
 KMDVDYPSDEDLCSFLKENDYIVFRKDLLQLLVEPLNKSPFIPVQTKKKEIYNHKSFLDLDCSLEKVKV
 QHYPIFLAPQKYLPLRVVQAISAPRHKIQELLPQYKNAGVLI

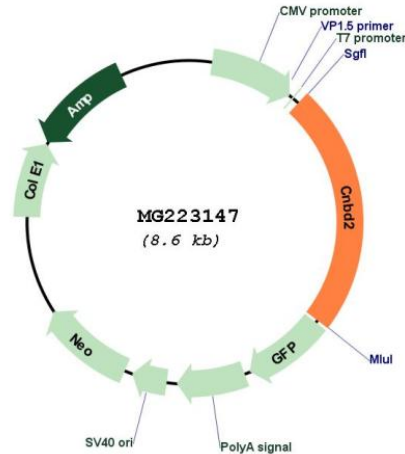
TRTRPLE - GFP Tag - V

Restriction Sites: SgfI-MluI

Cloning Scheme:

Cloning sites used for ORF Shuttling:



Plasmid Map:


ACCN: NM_027585

ORF Size: 2019 bp

OTI Disclaimer: The molecular sequence of this clone aligns with the gene accession number as a point of reference only. However, individual transcript sequences of the same gene can differ through naturally occurring variations (e.g. polymorphisms), each with its own valid existence. This clone is substantially in agreement with the reference, but a complete review of all prevailing variants is recommended prior to use. [More info](#)

OTI Annotation: This clone was engineered to express the complete ORF with an expression tag. Expression varies depending on the nature of the gene.

Components: The ORF clone is ion-exchange column purified and shipped in a 2D barcoded Matrix tube containing 10ug of transfection-ready, dried plasmid DNA (reconstitute with 100 ul of water).

Reconstitution Method:

1. Centrifuge at 5,000xg for 5min.
2. Carefully open the tube and add 100ul of sterile water to dissolve the DNA.
3. Close the tube and incubate for 10 minutes at room temperature.
4. Briefly vortex the tube and then do a quick spin (less than 5000xg) to concentrate the liquid at the bottom.
5. Store the suspended plasmid at -20°C. The DNA is stable for at least one year from date of shipping when stored at -20°C.

RefSeq: [NM_027585.2](#), [NP_081861.2](#)

RefSeq Size:	2106 bp
RefSeq ORF:	2022 bp
Locus ID:	70873
UniProt ID:	Q9D5U8
Cytogenetics:	2
Gene Summary:	Essential for male fertility. Plays an important role in spermatogenesis and regulates sperm motility by controlling the development of the flagellar bending of sperm (PubMed:24339785). [UniProtKB/Swiss-Prot Function]