

Product datasheet for **MG223145**

Plag1 (NM_019969) Mouse Tagged ORF Clone

Product data:

Product Type:	Expression Plasmids
Product Name:	Plag1 (NM_019969) Mouse Tagged ORF Clone
Tag:	TurboGFP
Symbol:	Plag1
Mammalian Cell Selection:	Neomycin
Vector:	pCMV6-AC-GFP (PS100010)
E. coli Selection:	Ampicillin (100 ug/mL)



[View online »](#)

ORF Nucleotide Sequence:

>MG223145 representing NM_019969
 Red=Cloning site Blue=ORF Green=Tags(s)

TTTTGTAATACGACTCACTATAGGGCGGCCGGAATTCGTCGACTGGATCCGGTACCGAGGAGATCTGCC
 GCC**GCGATCGCC**

ATGGCCACTGTCAATTCCTGGTGATTTGTCAGAAGTAAAGATACCCAGAAAGCCCTTCAGGAAACGTA
 AGCGTGGTGAAAGCAAACCAAGAAAAAACTTTCCTTGCCAACTGTGTGACAAGGCCCTTAAACAGTGTGA
 GAAATTAAGGTTCACTCCTCTCTCACACGGGAGAGAGGCCCTACAAGTGCACACACCAAGACTGCACC
 AAGGCCTTTGTTCTAAGTACAAATTACAAAGGCACATGGCTACTCACTCTCCTGAGAAAACCCACAAGT
 GTAATTACTGTGAGAAAAATGTTTCACCGAAAGACCATCTGAAGAATCACCTCCATACACATGACCCCAA
 CAAAGAGACCTTTAAATGCGAAGAGTGTGGCAAGAGCTACAATACCAAGCTTGGTTTTAAGCGACACTTG
 GCCTTGCATGCTGCCACCAGTGGTGACCTCACCTGCAAGGTGTGTTTGCAGAATTTGAGAGCACAGGTG
 TGCTCCTAGAGCACCTGAAATCTCACCGGGCAAGTCATCTGGGGGTGTGAAGGAGAAAAAGCACAATG
 TGAGCACTGCGAACGCAGGTTCTACACCGGAAGGATGTCGGGAGACACATGGTGGTACACACAGGAAGA
 AAGGACTTCTCTGTCACTACTGCGCACAGAGATTTGGACGAAAGGATCACCTCACTCGACACATGAAGA
 AGAGTCACAATCAGGAGCTTCTGAAGGTCAAAACGGAACCAAGTAGATTTCTGGACCCATTTACCTGCAA
 CATGTCTGTGCCTATAAAAGATGAACTCCTGCCGGTCAATGTCCTTACCTCCAGTGAACCTTTGTCAAAG
 CCATTCACAAACACTTTGCAGTTAAACCTCTATAACACTCCATTTCACTCCATGCAGAGCTCTGGGTCTG
 CTCACCAATGATAACAACCTTTACCTTTGGGAATGACATGCCCATAGATATGGATGCTGTTACCCCTC
 TCATCATCTTGCTTTCAAATGCCATTCAGTTCACCTCATACGCAATCTCTATTCTGAAAAAGAACAG
 CCATTAAGGGGGAAATTGAGAGTTACCTGATGGAGCTACAAGGTGGTGCACCATCTTCATCCCAGGATT
 CTCCAGCATCGTCACTAAGCTAGGGTTAGAGCCTCAGAGTGGGTGCCAGATGATGGTGTCTGGGACCT
 CTCCTGTCAAAGAGCTCTATCTCTATCAGTGACCCCTCAGCACACCAGCATTGGATTTCTCTCAGTTG
 TTCAATTTCATACCATTGAATGGTCCCCCTTATAACCCACTTTCACTGGGAAAGCCTTGGGATGAGCTATT
 CCCAGGAGGAAGCACACTCTTCTGTCTCTCAGCTGCCACACAAACACAGGATCTTCAGGACCCTGCAAA
 CACTGTGGGTCTAAGTTCTCTGCACTCACTGTCGGCAGCGTTCACCAGCAGCCTGAGCTCAAGCACTACC
 TTGCCCGTTTCCACCAGGCGTTTCAG

ACGCGTACGCGGCCGCTCGAG – GFP Tag – GTTTAA

Protein Sequence:

>MG223145 representing NM_019969
 Red=Cloning site Green=Tags(s)

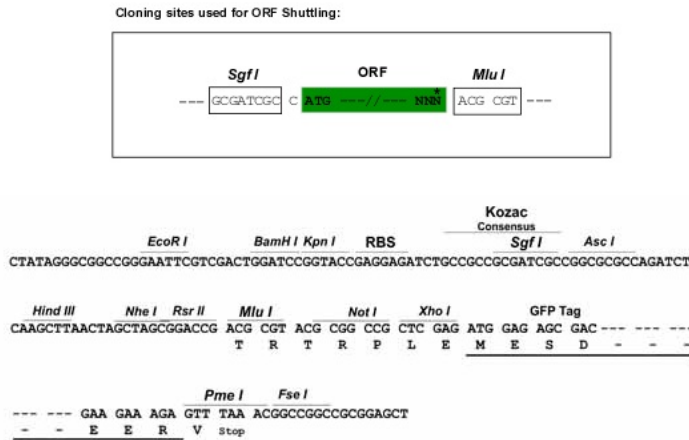
MATVIPGDLSEVRDTQKAPSGKRKRKRGESKPRKNFPCQLCDKAFNSVEKLVHFSHTGERPYKCTHQDCT
 KAFVSKYKLRHMATHSPEKTHKCNCEKMFHRKDHLKNHLHHDHPNKETFKCEECGKSYNTKLGFKRHL
 ALHAATSGDLTCKVCLQNFESTGVLLLEHLKSHAGKSSGGVKEKKHQCEHCERRFYTRKDVRRHMVVHTGR
 KDFLCQYCAQRFGRKDHLTRHMKKSHNQELLKVKTEPVDFLDPFTCNMSVPIKDELLPVMSLPSSELLSK
 PFTNTLQLNLNYPFQSMQSSGSAHQMITTLPLGMTCPIDMDAVHPSHHLAFKCPFSSSYAISIPKEQ
 PLKGEIESYLMELQGGAPSSSQDSPAASSKLGLEPQSGSPDDGAGDLSLSSSISISDPLSTPALDFSQ
 FNFIFPLNGPPYNPLSVGSLGMSYSQEEAHSSVSQVLPQTQDLQDPANTVGLSSLHSLSAFTSSLSSST
 LPRFHQAFQ

TRTRPLE – GFP Tag – V

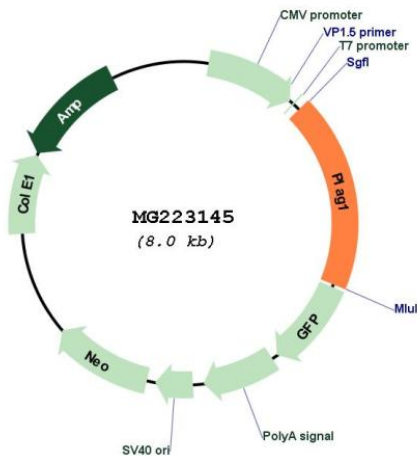
Restriction Sites:

Sgfl-MluI

Cloning Scheme:



Plasmid Map:



- ACCN:** NM_019969
- ORF Size:** 1497 bp
- OTI Disclaimer:** The molecular sequence of this clone aligns with the gene accession number as a point of reference only. However, individual transcript sequences of the same gene can differ through naturally occurring variations (e.g. polymorphisms), each with its own valid existence. This clone is substantially in agreement with the reference, but a complete review of all prevailing variants is recommended prior to use. [More info](#)
- OTI Annotation:** This clone was engineered to express the complete ORF with an expression tag. Expression varies depending on the nature of the gene.
- Components:** The ORF clone is ion-exchange column purified and shipped in a 2D barcoded Matrix tube containing 10ug of transfection-ready, dried plasmid DNA (reconstitute with 100 ul of water).

Reconstitution Method:

1. Centrifuge at 5,000xg for 5min.
2. Carefully open the tube and add 100ul of sterile water to dissolve the DNA.
3. Close the tube and incubate for 10 minutes at room temperature.
4. Briefly vortex the tube and then do a quick spin (less than 5000xg) to concentrate the liquid at the bottom.
5. Store the suspended plasmid at -20°C. The DNA is stable for at least one year from date of shipping when stored at -20°C.

RefSeq: [NM_019969.3](#), [NP_064353.2](#)

RefSeq Size: 4635 bp

RefSeq ORF: 1500 bp

Locus ID: 56711

UniProt ID: [Q9QYE0](#)

Cytogenetics: 4 A1

Gene Summary: Transcription factor whose activation results in up-regulation of target genes, such as IGFII, leading to uncontrolled cell proliferation: when overexpressed in cultured cells, higher proliferation rate and transformation are observed. Other target genes such as CRLF1, CRABP2, CRIP2, PIGF are strongly induced in cells with PLAG1 induction. Proto-oncogene whose ectopic expression can trigger the development of pleomorphic adenomas of the salivary gland and lipoblastomas. Cooperates with CFBF-MYH11.[UniProtKB/Swiss-Prot Function]