

Product datasheet for **MG223144**

Slc45a4 (NM_001033219) Mouse Tagged ORF Clone

Product data:

Product Type:	Expression Plasmids
Product Name:	Slc45a4 (NM_001033219) Mouse Tagged ORF Clone
Tag:	TurboGFP
Symbol:	Slc45a4
Synonyms:	9330175B01Rik; AW552276
Mammalian Cell Selection:	Neomycin
Vector:	pCMV6-AC-GFP (PS100010)
E. coli Selection:	Ampicillin (100 ug/mL)



[View online »](#)

ORF Nucleotide
Sequence:

>MG223144 representing NM_001033219
 Red=Cloning site Blue=ORF Green=Tags(s)

TTTTGTAATACGACTCACTATAGGGCGGCCGGGAATTCGTCGACTGGATCCGGTACCGAGGAGATCTGCC
 GCC**CGGATCGCC**

ATGAAAATGGCTCCGCAGAATGCCGACTCGGAATCTATGCAAGTACAAGAGCTGCCTGTGCCCTGCCAG
 ACCCTCAGAAACCCAGAGACCCAGAGGCGGAGACCCAAGAGGAGACCACAAGCGAGGGGTCCATAGACAG
 AATCCCCACACGCCTATGGGTATGCATGGGGCAGTGATGTTTGGCAGGGAATTTTGTACGCGATTGGAG
 ACAGCACTGGTTACACCTATACTGTTACAGATAGGCCTCCCTGAGAAGTACTACAGCCTGACCTGGTTCC
 TGAGCCCCGTCCTCGGCCTCATCTTACACCGCTTATTGGCTCTGCAAGTGACCGCTGCACCCTGAGCTG
 GGGCCGCCGGCCCTTCATCCTTGGCTGTGTGGGGTCTCATTGGTGTGCACTTTTCTCAAC
 GGCTCCGCCATAGGTCTGGCGCTCGGTGATGTTCCAGCCGGCAGCCATTGGCATTGTCCTCACGGTGC
 TGGGAGTGGTGGTCTGGATTTCACTGCCGATGCAACTGAAGGGCCATTCTGCTGCCTACCTGCTGGATGT
 GGTAGACAGTGAGGAGCAAGACATGGCCCTCAACATACACGCCTTCTCTGCTGGCCTTGGTGGGGCCATT
 GGCTACGTGCTGGGTGGGCTGGACTGGACGCAGACCTTCTAGGTGACTGGTCCAGACGAGAACCAGG
 TGCTGTTCTTCTCGCTGCCGTCATCTTCTCCGTGTCGGTGGCTCTGCATCTTTCAGCATCGAGGAGGA
 GCAGTACAGCCCACAGCAGGACCGCGGGCTGAGGATCCCACCCTGCCCGGCACCAGCGTTCAGCCTGGC
 GCCCCAGCCCCTGCCTCCCGCTCAGCTCCCTTGGTGGGGCATGCAGGACGGCAGCCCCCATTCCAG
 ATGAGGTACAGTCAGAGCAGGAGCTGTCCTTGGACTACCTCGATGTGGACATCGTGCAGCAAGAGTGA
 CTCGGTGTGCACATGGCCGACGCCACACTGGACATGGAGCCCCAGCTGCTTCTCTGCATGACATCGAA
 CCCTCCATCTTCAAGACGCTTCTACCCAGCACCCCCAGAGCACCAGCAAGAGCTTCTGAGGGCCA
 AGCTGCCCGCCCTGTCCACGTTCTCAGGGAGTCCACCAAGGAGGACGACACCTTGTGTTGATAATCACT
 GAATGAAGCTAAAGTCCCAAATGGGAGAGGCTCCCCACCAATCAACTCCCTCAGCCGCTCCAAGGTAGAC
 TTGAAGCCCTCAGTCACATCTGGTTCATGAGGCGGCGTAGGCACATGTTTCACAGGCAGCCTTCTAGCA
 CCTTCTCTACTACGGCAAGATTGGATCCCACTGCTACCGATACCGCCGGGCCAACGCAGTGGTCTCAT
 CAAGCCGTCCCGAAGCATGAGCGACCTGTATGACCTGCAGCAGCGGCAGCGCTCCCGGCACCGCAACCAG
 AGTGGGGCCACTGCCTCCAGCGGGGACACGGAGAGTGAGGAGGTGAGACAGAGACCACCGTGGCCTGC
 TGTGGCTGTCCATGCTGAAGATGCCAAGGAGCTGATGTGGCTCTGCCTCTGTACCTACTCACTTGGTT
 CTCGGTATCGCAGAGGCTGTCTTCTATACTGACTTCATGGCCAGGTTATCTTCAAAGGGAACCCGCAG
 GCCCCCTCCAACCTCCACCAAGTGGCATGCCTACAATGCTGGCGTGAAGATGGGCTGCTGGGGCCTGGTCA
 TCTACGCTGCTACTGGTGTATCTGCTCAGCCTTGTACAGAAGTACCTGGACAATATGACCTGAGCAT
 CAGGATCATCTACATGTTGGGGACACTGGGCTTCTCCGTGGGCACCGCTGTGATGGCCATGTTTCCCAAC
 GTCTACGTGGCCATGGTCAACATCAGCACCATGGGTGTTGTCTCGATGAGCATCTCTACTGCCCTATG
 CCCTCCTAGGGCACTACCATGACATCAAGGAGTATGTCCACCACAGTCCGGGGAATTCGAAGCGTGGATT
 TGGCATTGACTGCGCCATCCTCTCTGTGAGGTCTACATCTCCAGATCCTGGTTGCATCTGCCCTTGGG
 GGCGTGGTGCAGCTGTGAATAGTATCGTTGTTCATCCCATAGTGGCCTCTGTAGGCTCTTCTCTGGGCT
 TCTTGACAGCCACATTCTGGTCTATACCCTGAGGTGTGAGAGGAACCTAAGGAGGAACAGAAAGGCT
 GTCCTCAGGGCCCGCTGGCGAAGGCGAGGGTGGAGCGGGCAGTGAGAAGCCCACTGTACTGAAGCTGTCT
 CGGAAAGGGGGCCTTCGGGGCTGGTGGAGACGGAGTCCATGGTG

ACGCGTACGCGGCCGCTCGAG - GFP Tag - GTTTAA

Protein Sequence: >MG223144 representing NM_001033219
 Red=Cloning site Green=Tags(s)

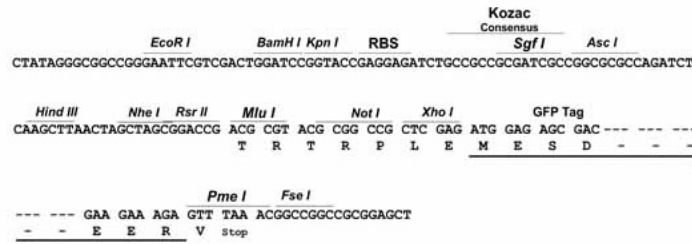
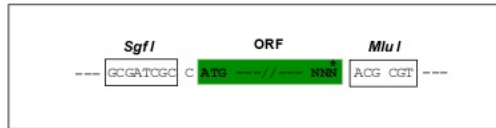
MKMAPQNADSESMQVQELPVPLPDPQKPRDPEAETQEETTSEGSIDRIPTRLWVMHGAVMFGREFCYAME
 TALVTPILLQIGLPEKYYSLTWFLSPVLGLIFTPLIGSASDRCTLSWGRRRPFILALCVGVLIGVALFLN
 GSAIGLALGDVPSRQPIGIVLTVLGVVLDVSADATEGPIRAYLLDVVDSEEQDMALNIHAFSAGLGGAI
 GYVLGGLDWTQFTFLGDFWQTQNVLFFFAAVIFSVSVALHLFSIEEEQYSPQQDRGPEDPTLPGTSVQPG
 APAPASRLSSLGGMQDGSPPFPDEVQSEHELSDYLDVDIVRSKSDSVLHMADATLDMEPQLLFLHDIE
 PSIFQDASYPSTPQSTSQELLRAKLPRLSTFLRESTKEDDTLLDNHLNEAKVPNGRGSPPINLSRSKVD
 LKPSVTS GSMRRRRHMFHRQASSTFSYYGKIGSHCYRIRANAVVLKPSRSMSDLYDLQQRSRHRNQ
 SGATASSGDTSEEGETETTVRLLWLSMLKMPKELMWLCLCHLLTWFVIAEAVFYDFMGQVIFKGNPQ
 APSNSTKWHAYNAGVKMGCWGLVIYAATGAICALLQKYL DNYDLSIRIIYMLGTLGFSVGTAVMAMFPN
 VYVAMVTISTMGVVSMSISYCPYALLGHYHDIKEYVHSPGNSKRGFIDCAILSCQVYISQILVASALG
 GVVDAVNSIVVIPIVASVGSFLGFLTATFLVIYPEVSEEPKEEQGLSSGPAGEGEGGAGSEKPTVLKLS
 RKGLRLVETESMV

TRTRPLE - GFP Tag - V

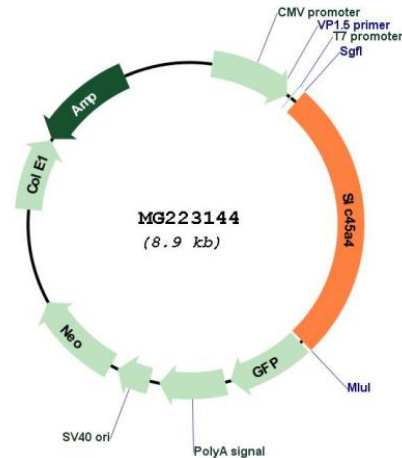
Restriction Sites: SgfI-MluI

Cloning Scheme:

Cloning sites used for ORF Shuttling:



Plasmid Map:



ACCN: NM_001033219

ORF Size: 2355 bp

OTI Disclaimer: The molecular sequence of this clone aligns with the gene accession number as a point of reference only. However, individual transcript sequences of the same gene can differ through naturally occurring variations (e.g. polymorphisms), each with its own valid existence. This clone is substantially in agreement with the reference, but a complete review of all prevailing variants is recommended prior to use. [More info](#)

OTI Annotation: This clone was engineered to express the complete ORF with an expression tag. Expression varies depending on the nature of the gene.

Components: The ORF clone is ion-exchange column purified and shipped in a 2D barcoded Matrix tube containing 10ug of transfection-ready, dried plasmid DNA (reconstitute with 100 ul of water).

Reconstitution Method:

1. Centrifuge at 5,000xg for 5min.
2. Carefully open the tube and add 100ul of sterile water to dissolve the DNA.
3. Close the tube and incubate for 10 minutes at room temperature.
4. Briefly vortex the tube and then do a quick spin (less than 5000xg) to concentrate the liquid at the bottom.
5. Store the suspended plasmid at -20°C. The DNA is stable for at least one year from date of shipping when stored at -20°C.

RefSeq: [NM_001033219.4](#)

RefSeq Size: 4659 bp

RefSeq ORF: 2358 bp

Locus ID: 106068

UniProt ID: [Q0P5V9](#)

Cytogenetics: 15 D3