

Product datasheet for **MG223141**

Abcc9 (NM_021041) Mouse Tagged ORF Clone

Product data:

Product Type:	Expression Plasmids
Product Name:	Abcc9 (NM_021041) Mouse Tagged ORF Clone
Tag:	TurboGFP
Symbol:	Abcc9
Synonyms:	AI414027; AI449286; SU; SUR; Sur2; SUR2A; SUR2B
Mammalian Cell Selection:	Neomycin
Vector:	pCMV6-AC-GFP (PS100010)
E. coli Selection:	Ampicillin (100 ug/mL)
ORF Nucleotide Sequence:	>MG223141 representing NM_021041 Red=Cloning site Blue=ORF Green=Tags(s)

TTTTGTAATACGACTCACTATAGGGCGGCCGGAATTCGTCGACTGGATCCGGTACCGAGGAGATCTGCC
GCC**CGATCGCC**

ATGAGCCTTTCTTTTGTGGGAACAACATCTCCTCCTACAACATCTATTATGGTGTCTCCAAAACCCCT
GCTTTGTGGACGCACTCAACCTGGTCCCACATGTCTTCTGCTGTTTATCACCTTTCCAATACTGTTTCAT
TGGATGGGGGAGCCAAAGCTCAAAGTGCAAATTCATCATAACACGTGGCTTCATTTTCCGGACACAAC
CTGAGATGGATTCTGACGTTTGGCTCCTGTTTGTGCATGTTTGTGAGATAGCGGAAGGCATCGTTTCAG
ACTCGCATCGGGGTCCAGGCATCTCCACCTTTTCATGCCGGCTGTGATGGGATTTGTCGCCACAACAAC
GTCCATCGTCTATTATCATAACATTGAAACATCAAATTTCCCTAAATTACTTTTAGCTTTATTCTGTAC
TGGGTAATGGCCTTTATTACAAAGACGATAAAGTTGGTCAAATACTGGCAGTTGGGGTGGGAGTGTGAG
ACCTGCGCTTCTGCATCAGAGGATGATGGTCATCTTGAATGGGCTGCTGATGGCTGTGGAGATCAATGT
CATCCGGGTCAGAAGATATGTTTCTTCATGAATCCCCAGAAAGTGAAGCCTCCGGAAGACCTCCAGGAC
CTGGGCGTGAGGTTCTCCAGCCATTTGTGAATTTACTGTCCAAAGCTACTTACTGGTGGATGAACACAC
TTATCATATCAGCTCACAGGAAACCTATCGATCTGAAGGCGATTGGAAAGTTGCCGATAGCGATGAGGGC
GGTGACCAATTATGTCTGCCTAAAGGAAGCCTATGAAGAGCAGAAGAAAAAGGCTGCCGATATCCAAAT
CGGACTCCCTCCATATGGCTGGCCATGTACAGAGCTTTTGGGAGACCAATCCTGCTGAGCAGCACATTCC
GGTACTTGGCTGACTTGCTGGGGTTTGGTCTCTTTGTATATCTGGGATAGTCCAGCGAGTAAATGA
AAAGACTAACACAACAAGAGAAATGTTTCCAGAGACACTCTCATCAAAGGAATTTCTGAAAAACGCCAT
GTGCTGGCTGTCTGCTTTTCTGGCCCTATCCTACAGAGGACCTTTCTGCAGGCTTCTACTATGTGA
CCATAGAGACCGGCATCAACCTCCGTGGGGCTCTGCTGGCTATGATATAACAATAAAATCCTTCGGCTCTC
GACTTCTAACCTATCCATGGGTGAGATGACCCTGGGACAGATCAACAACCTGGTTGCCATAGAAACCAAT
CAGCTCATGTGGTTCTTGTCTGTGCCAATCTGTGGGCCATGCCTGTTCCAGATCATAATGGGGGTGA
TCCTGCTCTACAATTTGCTTGGGTGAGTGCAGTGGTGGCGCTGCAGTCATTGTCTCCTTGCACCGAT
TCAGTACTTATTGCCACGAAGCTGGCGGAGGCTCAGAAGAGCACTCTGGATTATCCACCGAGAGGTTG



[View online »](#)

AAGAAGACGAATGAGATACTGAAGGGCATCAAACCTCCTTAAGCTGTACGCCTGGGAGCACATTTTCTGCA
 AGAGCGTGGAGGAGACACGAATGAAGGAGCTCTCCAGCCTCAAAACCTTCGCGCTCTACACGTCACCTTC
 CATCTTATGAACGCAGCAATCCCATCGCAGCTGTTCTTGCACATTTGTGACACATGCGTACGCCAGT
 GAAACAACCTGAAGCCTGCAGAGGCCCTTTCCTCTCTGTCTCTTCCACATCCTCGTCACACCCGCTCT
 TCCTGTGTCCACGGTGGTCAGATTTCGAGTCAAAGCCATCATCAGTGTCAAAGCTGAATGAGTTTCT
 CTTGAGCGATGAGATTGGTGAGGACAGCTGGAGGGCCGGGAGGGCAGCTGCCTTTCGAGTCTGTAAAG
 AAGCACACCGGAGTGAATCAAAACCAATAAACAGGAAGCAGCCTGGACGGTACCACCTGGACAGCTACG
 AGCAAGCACGGCCCTCCGGCCCGCTGAGACGGAAAGACATTGCCATAAAGGTGACAAATGGATACTTCTC
 ATGGGGCAGTGGTTAGCTACATTGTCCAATATTGACATTGCAATTCCAACAGGTCAGCTAACCATGATT
 GTAGGCCAAGTGGTTGTGAAAATCATCTCTTCTCCTTGCCATCCTTGGTGAGATGCAGACCCTGGAAG
 GAAAAGTTTACTGGAACAATGTAATGAATCTGAGCCTCTTTTGAAGCAACCCGAAGCAGAAGCAGGTA
 TTCTGTGGCTTACGCTGCCAGAAGCCTTGCTCCTAAATGCTACAGTTGAGGAAAATATCACTTTTGA
 AGTCTTTCAACAGACAGAGGTACAAGGCTGTACCGATGCTGCTCTTTCAGCCAGACATTGATTTGC
 TACCATTTGGAGACCAAACTGAAATCGGAGAGAGGGGCATCAACCTGAGTGGGGGTGAGGCGAGAGAT
 CTGCGTGGCAGGGCACTTACCAAAACCAACATCGTCTTTTTGGACGACCCATTCTCTGCCCTGGAC
 ATCCACCTGAGCGATCATTTGATGCAGGAAGGAATCCTGAAGTTTCTCCAGGATGACAAGAGGACGGTTG
 TTCTTGTGACGCACAACTGCAGTACCTGACGCACGCTGACTGGATCATAGCCATGAAGGATGGCAGTGT
 GTTAAGGGAAGGGACTTTGAAAGACATTAGACCAAGACGTTGAGCTTTATGAACACTGGAACCCCTC
 ATGAATAGACAGGATCAAGAATTAGAAAAGGACATGGAAGCAGACCAAAACACTGGAGAGGAAGACTC
 TCCGGAGAGCCATGTATTCAAGAGAGGCCAAGGCACAGATGGAGGATGAAGATGAAGAGGAGGAAGGGA
 GGAAGATGAGGAAGATAACATGTCAACGGTGTGAGGCTCAGGACCAAGATGCCCTGGAAGACCTGCTGG
 TGGTACCTCACTTCAGGAGGGTTTTTCTGCTCTTCTCATGATCTTCTCAAGCTTTTGAAGCACTCGG
 TGATTGTGGCTATAGACTACTGGCTAGCTACGTGGACATCCGAATACAGTATAAACCACTCTGAAAAGC
 TGACCAGACCTTCTATGTGGCTGGGTTACAGCATCCTCTGTGGAGCAGGCATTTTCTTTGCTCGTCACC
 TCCTCACCGTGAATGGATGGGCTCACAGCCGCAAGAACCTCCACCACAACCTCCTCAATAAGATAA
 TTCTCGGGCAATAAGGTTCTTTGATACCACCCGCTGGGGCTGATCCTCAATCGTTTTTCTGCTGATAC
 GAACATCATCGACCAGCATATCCCTCCGACCTGGAGTCGCTGACGCGCTCCACCCTGCTCTGCCTGTCT
 GCTATTGGGATGATCTCCTATGTACACCCGTGTTTTCTGCTGCCCCTTGCGCCCTGGGTGAGCCTTTT
 ATTTTCAGAAATACTTCCGGTTGCCTCTAAGGATCTCCAGGAACCTGACGACAGCACCAGCTCCC
 CCTGCTTTGCTCACTTCTCAGAAACAGCTGAAGGGCTCACCCTATCCGGGCTTCAGGCATGAAACCAGA
 TTCAAGCAACGCATGCTGGAGCTGACAGACACGAACAACATTGCCTACTTATTTCTCTCAGCAGCCAACA
 GATGGCTGGAGGTCAGGACGGACTATCTGGGAGGTCATTGTTCTGACAGCCTCCATTGCATCCATTAG
 TGGCTCTTCAACTCTGGACTGGTGGGCTTGGGCTTCTCTATGCCCTCACGATAACCAATTACCTAAAT
 TGGGTTGTAAGGAACTTGGCCGACCTGGAAGTCCAGATGGGTGCAGTGAAGAAAGTGAACAGTTTCTTGA
 CTATGGAGTCCGAGAACTATGAAGGCACCATGGATCCTTCTCAAGTCCCAGAGCACTGGCCACAGGAAGG
 CGAGATCAAGATTCACGATCTGTGTGCAGATATGAAAATAACCTGAAGCCCCTTCTGAAACATGTCAAG
 GCTTACATCAAACCCGGGAGAGGTTGGGATCTGTGGTGAAGTGGCAGTGGGAAGTCTCCTTATCCC
 TGGCTTTCTTCAAGATGGTCGACATATTGACGGAAAGATAGTCATTGATGGGATAGACATCTCAAACCT
 GCCCTGCACACGCTCCGCTCCAGGCTGTCCATCATTCTCCAGGACCCAATCCTGTTGAGGCTCCATC
 AGGTTTAACTGGATCCTGAATGCAAGTGCACAGATGACAGGCTCTGGGAGGCTCTAGAAAATTGCCAGC
 TGAAGAATATGGTCAAATCTCTGCCGGAGGCTTAGATGCCACTGTCACCGAAGGTGGTGAAGTTCAG
 GTTGGACAGAGACAGCTGTTCTGCCTGGCCAGGGCCTTTGTTGGAAAGAGCAGTATACTCATATGGAT
 GAAGCCACTGTTCCATCGACATGGCCACGGAAAACATTTTGCAGAAAGTAGTCATGACAGCCTTTGCGG
 ATCGCACGGTCGTAACCATAGCTCACCGTGTCTTCTATTGTGGATGCAGGCCTTGTTTTGTCTTTTCT
 TGAGGGTATTTTGTGGAGTGTGATACTGGTCAAACCTGCTCCAGCACAAGAATGGCCTTTTTTCTACT
 TTGGTGTGACCAACAAG

ACGCGTACGCGGCCGCTCGAG - GFP Tag - GTTTAA

Protein Sequence: >MG223141 representing NM_021041
 Red=Cloning site Green=Tags(s)

```

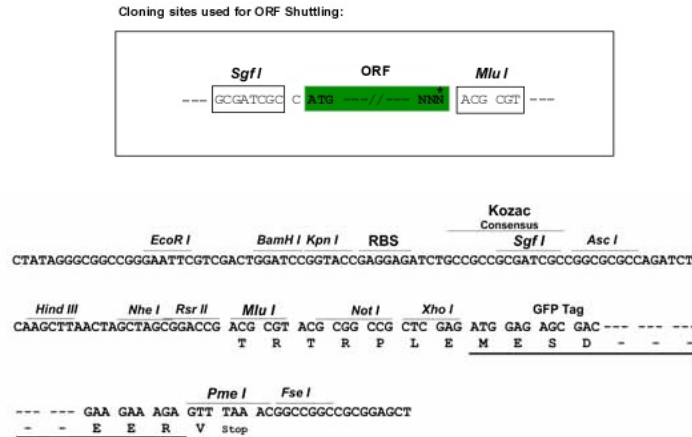
MSLSFCGNNISSYNIYYGVLQNPCFVDALNLVPHVFLFITFPILFIGWGSQSSKVQIHHNTWLHFPGH
LRWILTFALLFVHVCEIAEGIVSDSHRASRHLHFM PAVMGFVATTTISIVYYHNIETSNFPKLLALFLY
WYMAFITKTIKLVKYQLGWGVS LRF CITGVMVILNGLLMAVEINVIRVRRYVFFMNPQKVKPPEDLQD
LGVRFLOPFVNLLSKATYWMNTLII SAHRKPIDLKAIGKLP IAMRAVTNYVCLKEAYEEQKKAADHPN
RTPSIWLA MYRAFGRPILLSSSTRYLADLLGFAGPLCISGIVQRVNEKTNNTREMPETLSSKEFL ENAH
VLAVLLFLALILQRTFLQASYYVTIETGINLRGALLAMIYNKILRLSTSNLSMGEMTLGQINNLVAIETN
QLMWFLFLCPNLWAMPVQIIMGVILLYNLLGSSALVGA AVIVLLAPIQYFIATKLAEAQKSTLDYSTERL
KKTNEILKGIKLLKLYAWEHIFCKSV EETRMKELSSLKTFALYTSLSIFMNAAPIAAVLATFVTHAYAS
GNLKP AEAFASLSL FHILVTPFLLLSTVVRFAVKAIISVQKLN EFLLSDEIGEDSWRAGEGLPFESCK
KHTGVQSKPINRKPGRYHLDSEYQARRLPAETEDIAIKVTNGYFSWGSGLATLSNIDIRIPTGQLTMI
VGQVGC GKSSLLAILGEMQTL EGKVYWNVNESEPSFEATRSRSRYSVAYAAQKPWLLNATVEENITFG
SPFNRQRYKAVTDACSLQPDIDL L PFGDQTEIGERGINLSGGQRQRICVARALYQNTNIVFLDDPF SLD
IHLSDHLMQEGILKFLQDDKRTVVLVTHKLQYLTHADWIIAMKDG SVLREGTLKDIQTKDVELYEHWKTL
MNRQDQLEKDM EADQTTLERKTLRRAMYSREAKAQMEDEDEEEEEEDEEDNMSTVMRLR TKMPWKTCW
WYLTSGGFFLLFLMIFSKLLKHSVIVAIDYWLATWTSEYSINHPGKADQTFYVAGFSILCGAGIFLCLVT
SLTVEWMGLTAAKNLHHNLLNKIILGPIRFDDTTP LGLILNRF SADTNIIDQHIPP TLES LTRSTLLCLS
AIGMISYATPVFLVALAPLGVAFYFIQKYFRVASKDLQELDDSTQLPLLC HFSETAEGLTTIRAFRHETR
FKQRMLELTD TNNIAYFL SAANRWLEVRTDYLGACIVLTASIASISGSSNSGLVGLGLLYALTITNYLN
WVVRNLADLEVQMGAVKKVNSFLTMESENYEGTMDPSQVPEHWPQEGEIKI HDLCVRYENNLKPV LKHVK
AYIKPGQKVGICGRTGSGKSSLSLAFFRMVDIFDGKIVIDGIDISKLPLHLRSRLSIIILQDPILFSGSI
RFNLDP ECKCTDDRLWEALEIAQLKNMVKSLPGGLDATVTEGGENFSVGQRQLFCLARAFVRKSSILIMD
EATASIDMATENILQKVYMTAFADRTVV TIAHRVSSI V DAGLVLFSEGLLVECDTGP NLLQHKNGLFST
LVMTNK
  
```

TRTRPLE - GFP Tag - V

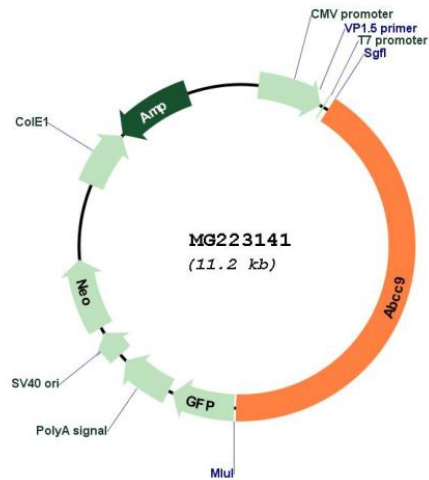
Restriction Sites:

SgfI-MluI

Cloning Scheme:



Plasmid Map:



ACCN: NM_021041

ORF Size: 4638 bp

OTI Disclaimer: The molecular sequence of this clone aligns with the gene accession number as a point of reference only. However, individual transcript sequences of the same gene can differ through naturally occurring variations (e.g. polymorphisms), each with its own valid existence. This clone is substantially in agreement with the reference, but a complete review of all prevailing variants is recommended prior to use. [More info](#)

OTI Annotation: This clone was engineered to express the complete ORF with an expression tag. Expression varies depending on the nature of the gene.

Components: The ORF clone is ion-exchange column purified and shipped in a 2D barcoded Matrix tube containing 10ug of transfection-ready, dried plasmid DNA (reconstitute with 100 ul of water).

Reconstitution Method:

1. Centrifuge at 5,000xg for 5min.
2. Carefully open the tube and add 100ul of sterile water to dissolve the DNA.
3. Close the tube and incubate for 10 minutes at room temperature.
4. Briefly vortex the tube and then do a quick spin (less than 5000xg) to concentrate the liquid at the bottom.
5. Store the suspended plasmid at -20°C. The DNA is stable for at least one year from date of shipping when stored at -20°C.

RefSeq: [NM_021041.2](#), [NP_066378.1](#)

RefSeq Size: 7538 bp

RefSeq ORF: 4641 bp

Locus ID: 20928

UniProt ID: [P70170](#)

Cytogenetics: 6 74.35 cM

Gene Summary: The membrane-associated protein encoded by this gene is a member of the superfamily of ATP-binding cassette (ABC) transporters. ABC proteins transport various molecules across extra- and intra-cellular membranes. ABC genes are divided into seven distinct subfamilies (ABC1, MDR/TAP, MRP, ALD, OABP, GCN20, White). This protein is a member of the MRP subfamily which is involved in multi-drug resistance. The human protein is thought to form ATP-sensitive potassium channels in cardiac, skeletal, and vascular and non-vascular smooth muscle. Protein structure suggests a role as the drug-binding channel-modulating subunit of the extrapancreatic ATP-sensitive potassium channels. Alternative splicing of this gene results in multiple transcript variants. [provided by RefSeq, Jul 2015]