

## Product datasheet for **MG223116**

### Bak1 (NM\_007523) Mouse Tagged ORF Clone

#### Product data:

**Product Type:** Expression Plasmids  
**Product Name:** Bak1 (NM\_007523) Mouse Tagged ORF Clone  
**Tag:** TurboGFP  
**Symbol:** Bak1  
**Synonyms:** Bak; N-Bak; N-BAK1  
**Mammalian Cell Selection:** Neomycin  
**Vector:** pCMV6-AC-GFP (PS100010)  
**E. coli Selection:** Ampicillin (100 ug/mL)  
**ORF Nucleotide Sequence:** >MG223116 representing NM\_007523  
Red=Cloning site Blue=ORF Green=Tags(s)

TTTTGTAATACGACTCACTATAGGGCGGCCGGAATTCGTCGACTGGATCCGGTACCGAGGAGATCTGCC  
GCC**CGATCGCC**

ATGGCATCTGGACAAGGACCAGGTCCCCGAAGGTGGGCTGCGATGAGTCCCCGTCCCCTTCTGAACAGC  
AGGTTGCCAGGACACAGAGGAGGTCTTTCGAAGCTACGTTTTTTACCTCCACCAGCAGGAACAGGAGAC  
CCAGGGGGCGGCCGCCCTGCCAACCCGAGATGGACAACCTGCCCTGGAACCCACAGCATCTGGGT  
CAGGTGGGTGGCAGCTTGTCTCATCGGAGATGATATTAACCGGCGCTACGACACAGATTCCAGAATT  
TACTAGAACAGCTTCAGCCACAGCCGGAATGCCTACGAACTTTCACCAAGATCGCCTCCAGCCTATT  
TAAGAGTGGCATCAGCTGGGGCCGCTGGTGGCTCTCCTGGGCTTTGGCTACCGTCTGGCCTGTACGTC  
TACCAGCGTGGTTTGACCGGCTTCTGGGCCAGGTGACCTGCTTTTTGGCTGATATCATACTGCATCATT  
ACATCGCCAGATGGATCGCACAGAGAGGCGGTTGGGTGGCAGCCCTGAATTTTCGTAGAGACCCATCCT  
GACCGTAATGGTGATTTTTGGTGTGTTCTGTTGGCCAATTCGTGGTACACAGATTCTTCAGATCA

**ACGCGTACGCGGCCGCTCGAG** - GFP Tag - GTTTAA

**Protein Sequence:** >MG223116 representing NM\_007523  
Red=Cloning site Green=Tags(s)

MASGQGPQPPKVGCDSPSPSEQVAQDTEEVFRSYVYFLHQEQETQGAAAPANPEMDNLPLEPNSILG  
QVGRQLALIGDDINRRYDTEFQNLLEQLQPTAGNAYELFTKIASSLFKSGISWGRVVALLGFGYRLALYV  
YQRGLTGFLGQVTCFLADIILHHYIARWIAQRGGWVAALNFRDPILTMVIFGVVLLGQFVVHRFFRS

**TRTRPLE** - GFP Tag - V

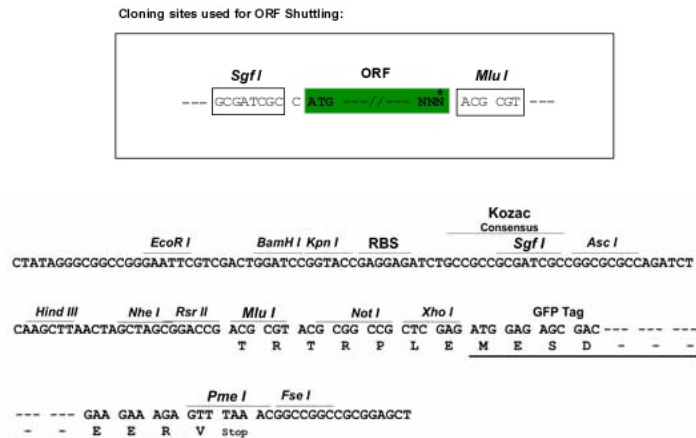
**Chromatograms:** [https://cdn.origene.com/chromatograms/ja1680\\_e02.zip](https://cdn.origene.com/chromatograms/ja1680_e02.zip)



[View online »](#)

Restriction Sites: SgfI-MluI

Cloning Scheme:



ACCN: NM\_007523

ORF Size: 627 bp

OTI Disclaimer: The molecular sequence of this clone aligns with the gene accession number as a point of reference only. However, individual transcript sequences of the same gene can differ through naturally occurring variations (e.g. polymorphisms), each with its own valid existence. This clone is substantially in agreement with the reference, but a complete review of all prevailing variants is recommended prior to use. [More info](#)

OTI Annotation: This clone was engineered to express the complete ORF with an expression tag. Expression varies depending on the nature of the gene.

Components: The ORF clone is ion-exchange column purified and shipped in a 2D barcoded Matrix tube containing 10ug of transfection-ready, dried plasmid DNA (reconstitute with 100 ul of water).

Reconstitution Method:

1. Centrifuge at 5,000xg for 5min.
2. Carefully open the tube and add 100ul of sterile water to dissolve the DNA.
3. Close the tube and incubate for 10 minutes at room temperature.
4. Briefly vortex the tube and then do a quick spin (less than 5000xg) to concentrate the liquid at the bottom.
5. Store the suspended plasmid at -20°C. The DNA is stable for at least one year from date of shipping when stored at -20°C.

RefSeq: [NM\\_007523.3](#)

RefSeq Size: 2017 bp

RefSeq ORF: 630 bp

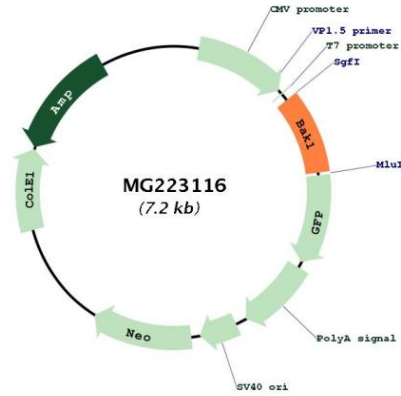
Locus ID: 12018

UniProt ID: [O08734](#)

**Cytogenetics:** 17 A3.3

**Gene Summary:** In the presence of an appropriate stimulus, accelerates programmed cell death by binding to, and antagonizing the anti-apoptotic action of BCL2.[UniProtKB/Swiss-Prot Function]

**Product images:**



Circular map for MG223116