

Product datasheet for **MG223101**

Sts (NM_009293) Mouse Tagged ORF Clone

Product data:

Product Type:	Expression Plasmids
Product Name:	Sts (NM_009293) Mouse Tagged ORF Clone
Tag:	TurboGFP
Symbol:	Sts
Synonyms:	ArsC
Mammalian Cell Selection:	Neomycin
Vector:	pCMV6-AC-GFP (PS100010)
E. coli Selection:	Ampicillin (100 ug/mL)



[View online »](#)

ORF Nucleotide Sequence:

>MG223101 representing NM_009293, codon optimized.
 Due to the complexity of NM_009293, the ORF clone is codon optimized for mammalian Expression.
 The nucleotide sequence differs from the reference sequence, yet the amino acid sequence remains identical.

Red=Cloning site Blue=ORF Green=Tags(s)

TTTTGTAATACGACTCACTATAGGGCGGCCGGAATTCGTCGACTGGATCCGGTACCGAGGAGATCTGCC
 GCC**CGATCGC**C

ATGCTCGGCCAGACCCTTGCTGCTGGCGGTGATGGCCGCTACTTTGGCCGATATAATCCTGGCTGCCG
 ATCCCGCGCCCGCGGACCCGCTCGAGGCCTCCCACTTCCTTTTGATCATGGCAGATGATCTTGAAT
 CGGAGATCTTGGCTGCTACGAAACAAAACGTTGCGGACTCCACACCTGGACCGCCTGGCTAGGGAGGGA
 GTGAAACTCACTAACACCTGGCTGCTGCTCCCTTTGACTCCTCCCGGGCCGCTTCTGACCGGCC
 GCTACCCACCACGGTCAGGCATGGCTGCCACGGCCGGTTCGGTGTATACTTGTTTACCGCTCTAGCGG
 GGGGCTCCCTCCATCCGAAGTACCATGGCAGCCTGCTGAAGGACGGGGCTATGCTACCGCTCTTATC
 GGCAATGGCACCTGGGGCTGTCTGTAGGGGCGCCACCGACTTTTGTACCATCCGCTGAGGCATGGCT
 TTGATAGGTTCTCGGAGTGCCAACTACCAACTTGCAGACTGCAGACCTGGCGCCGGGACCGTATTTGG
 CCCTGCTCTCCGGGTGTTTGGCGAGGCCCACTGGCTGCCCTCGGGGCATCACTTGCAGCTATGGCCGCT
 GCCAGATGGGCAGGGCTTGTAGAGTGCAGGGTGGGCTTTGGCTGGTACTGCCCGCAATGCTGGCCG
 TCGGGGGCCCTCGGTCGCTAGTTGCTTGGGGTTTAGGCCAGAACTGCTTCTCATGGATGATCTGCC
 TGTTCACAAAGGCCAACCGACTATGGCGCCTCACAGACGGCTGGCTGACGAGGCCCTGTTTCTT
 CGGCGCAATCGCGCAAGACCGTTCTCCTTTTCTGAGCTTCTGCACGTTACACAGCACACTTCGCCG
 ACCCTGGGTTTCGAGGGGCTCTCTGCACGGGCTACGGGATTCTGTAGAAGAGATGGACTGGGGTGT
 GGGTAGGGTCTCGTGCCTGGATGAGCTGGGACTGGCTAGAGAAACCCTGGTTTACTTTACTTCAGAC
 CACGGGGCACACGTGGAGGAGCTGGGGCCAGAGGAGAGCGAATGGGAGGCTCCAACGGTGTCTTCCGAG
 GCGGCAAGGAAATAACTGGGAAGGCGGCTCCGCGTGCCTTGCCTGGTCAAGTGGCTCGGCAACTCAG
 TCCTGGACGGTCTGTGCCGAACCCACAGCTTGATGGATGTCTCCCCACAGTAGCCAGACTCGCCGGA
 GCCGAAGTCCAGGCGACAGGGTATCGATGGTTCGCGACCTGATGCCTTTGCTTCGCGGCATGCGCAGA
 GGAGCGAGCATGAATTCCTTTTCACTACTGTAACGCCTACTTGCAGGCAGTCCGCTGGCACAATGGAAG
 CGCTGTGTGGAAGGCCTTTTACTTCACCCTAATTTCCGCCCCGCTGGCGCAACGGGTGTTTCAGCACT
 CACGTCTGCCTTTGCGCCGGTCTGCCACGTTACTGCACACGACCCCTCCCTGCTGTTTCGACCTGACTC
 GGGATCCTGGAGAAAGGCGACCTTTACGCCAGAAGCCGAGCCGCGGCACCGAGAGGTCCTCGATGCAAT
 CGACGCAGCAGCCAGAGCTCACCGAGCACGCTGCGGCCAGCCCCGACCGAGCTGGCTCCTCGCCACCTT
 ATGTGAAACCATGGCTGCAGCTGTGGGGTGGAGGGGGTGTGGGGGTGGCGCCGGTGCACAGGACGATT
 CCGGGCACGCCACGGCGACGGCAGCCATGCCATGACGACCCTGGTACGCCAAGACCGGGGTGACGA
 TGATGCACATTATGGTGGCCACGCGACCACTCGCACACAGGCCACCCACGC

ACGCGTACGCGGCCGCTCGAG - GFP Tag - GTTTAA

Protein Sequence: >MG223101 representing NM_009293
 Red=Cloning site Green=Tags(s)

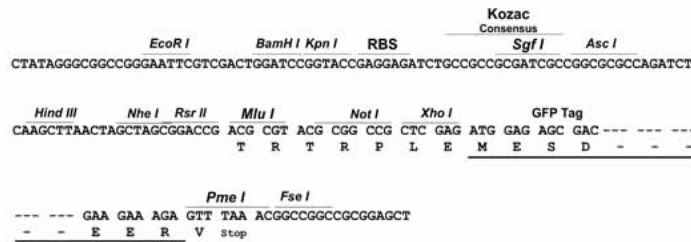
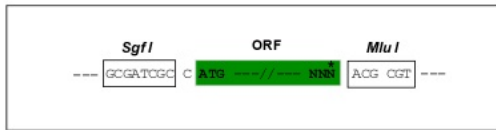
MPPRRPLLLAVMAATLADIILAADPAPAGPAPRPPNFLLIMADDLGGDLGCGYGNKTLRTPHLDRDLAREG
 VKLTQHLAAAPLCTPSRAAFLTGRYPFRSGMAAHGRVGVYLF TASSGGLPPSEVTMARLLKGRGYATALI
 GKWHLGLSCRGATDFCHHPLRHGFDRFLGVPTTNLRDCRPGAGTVFGPALRVFAAGPLAALGASLAAMAA
 ARWAGLARVPGWALAGTAAAMLAVGGPRASCLGFRPANCFLMDDLAVAQRPTDYGGLTRRLADEAALFL
 RRNRARPFLFLSFLHVHTAHFADPGFAGRSLHGAYGDSVEEMDWGVGRVLAALDELGLARETLVYFTSD
 HGHAHVEELGPRGERMGGNGVFRGGKGNWEGGVRVPCLVWRPRELSPGRVVAEPTSLMDVFPPTVARLAG
 AELPGDRVIDGRDLMPLLRGDAQRSEHEFLFHYCNAYLQAVRWHNGSAVWKAFYF TPNFAPAGANGCFST
 HVCLCAGPAHVT AHDPPLLFDL TRDPGERRPL TPEAEPRHREVLDAIDAAAARHRARLRPAPDQLAPRHL
 MWKPLQLWGGGGAGGGAGA QDDSGHAHGDGSHAHDDPGHAQDRGDDDAHYGGHATTRTQATPR

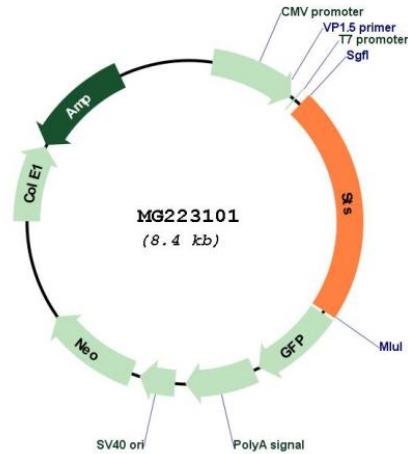
TRTRPLE - GFP Tag - V

Restriction Sites: SgfI-MluI

Cloning Scheme:

Cloning sites used for ORF Shutting:



Plasmid Map:


ACCN: NM_009293

ORF Size: 1872 bp

OTI Disclaimer: The molecular sequence of this clone aligns with the gene accession number as a point of reference only. However, individual transcript sequences of the same gene can differ through naturally occurring variations (e.g. polymorphisms), each with its own valid existence. This clone is substantially in agreement with the reference, but a complete review of all prevailing variants is recommended prior to use. [More info](#)

OTI Annotation: This clone was engineered to express the complete ORF with an expression tag. Expression varies depending on the nature of the gene.

Components: The ORF clone is ion-exchange column purified and shipped in a 2D barcoded Matrix tube containing 10ug of transfection-ready, dried plasmid DNA (reconstitute with 100 ul of water).

Reconstitution Method:

1. Centrifuge at 5,000xg for 5min.
2. Carefully open the tube and add 100ul of sterile water to dissolve the DNA.
3. Close the tube and incubate for 10 minutes at room temperature.
4. Briefly vortex the tube and then do a quick spin (less than 5000xg) to concentrate the liquid at the bottom.
5. Store the suspended plasmid at -20°C. The DNA is stable for at least one year from date of shipping when stored at -20°C.

RefSeq: [NM_009293.1](#), [NP_033319.1](#)

RefSeq Size: 2283 bp

RefSeq ORF: 1875 bp

Locus ID: 20905
UniProt ID: [P50427](#)
Cytogenetics: XY 75.0 cM
Gene Summary: Catalyzes the conversion of sulfated steroid precursors, such as dehydroepiandrosterone sulfate (DHEA-S) and estrone sulfate to the free steroid.[UniProtKB/Swiss-Prot Function]