

Product datasheet for **MG223089**

Rxfp1 (NM_212452) Mouse Tagged ORF Clone

Product data:

Product Type:	Expression Plasmids
Product Name:	Rxfp1 (NM_212452) Mouse Tagged ORF Clone
Tag:	TurboGFP
Symbol:	Rxfp1
Synonyms:	Gm1018; Lgr7
Mammalian Cell Selection:	Neomycin
Vector:	pCMV6-AC-GFP (PS100010)
E. coli Selection:	Ampicillin (100 ug/mL)



[View online »](#)

ORF Nucleotide Sequence:

>MG223089 representing NM_212452
 Red=Cloning site Blue=ORF Green=Tags(s)

TTTTGTAATACGACTCACTATAGGGCGGCCGGGAATTCGTCGACTGGATCCGGTACCGAGGAGATCTGCC
 GCC**CGGATCGCC**

ATGACATCTGGTCCATTCTTCTTCTGCATCTTCATTATTGGAAAAATTTCACTCTCGGAAGTGCACAGG
 ATGTCAGTTGTCCCTCGGCTCCTTCCCTGTGGGAACATGAGCAGGTGCCTGCCTCAGCTGCTTCACTG
 CAATGGTGTGGACGACTGCGGGAACCGAGCTGATGAGGACCCTGCGGAGACAACAATGGTGGTCTCTG
 CAACTGGACAAAATTTTTGCTAATTACTATAAACTGGCTTCCACTAACTCCTTTGAGGCAGAAAATTCCG
 AATGCTTGGTGGCTCTGTGCCATGCATTGTTTGTGCCGAGATCTAGAAGTACTGCTGATGAAGCCAA
 TTTACGAGCTGTCCATCAGTTTCTTCCAATGTGACTGTAATGTCCTGCAGAGGAACCTCATAAGAACA
 CTCCTCCCAACGGCTTCAGGAAGTACCATGAGCTGCAGAAGCTGTGCCTGCAAAAACAATAGGATCACT
 CCGTGAGCGTCTCTGCCTTCAGAGGACTGCGCAGCCTCACTAACTGTACCTCAGTCATAACAGAATAAC
 CTTCTAAAGCCAGGAGTTTTTGAAGATCTCCACAGACTGGAATGGCTGATAATTGAAGACAATCACCTC
 AGTCGAATTTCCCACTCACATTTACGGACTAAATCTCTTATTCTTCTAGTGCTGATGAATAATGCC
 TCACCCGTTTGCCTGACAAACCCCTCTGTGACGACATGCCCGCCTGCACTGGCTGGACTTTGAAGGCAA
 CCGTATCCATAATTTAAGAAATTTGACTTTTATTTCTGCAATAATTTAACTGTTTTGGTAAATGAGGAAG
 AACAAAATCAATTAATGAACATGCATTTACACACCTCCAGAACTAGATGAATGGATTTAGGAA
 GTAATAAGATTGAAAATCTTCCACCGAACATATTTAAGGATCTGAAGGAGCTGTGCAATGAATATTTT
 TTATAACCAATCCAGAAAATTTGAAGTAAATCAATTCGATTGTCTTGCCAACTCAAGTCTCTCAGCCT
 GAAGGAATAGAAAATTTCAAATATCCAACAAAGGATGTTTAGACCGCTCATAAATCTCTCAGCATCTATT
 TTAAGAAATTTCACTACTGTGGATACGCACCATGTGCGCAGCTGTAAGCCCAACCGGATGGATTTT
 ATCTCTAGAGAACCTCTTGGCAAGCATCATCCAGAGAGTCTTTGTCTGGTGTATCTGCCATTACCTGC
 TTTGAAAACATTTTTGTTATTTGTATGCGACCATACATCAGATCTGAGAACAAGCTGCATGCCATGTCGA
 TCATTTCTCTGCTGTGCTGACTGCCTAATGGGGTGTATCTATTTGTGATTGGTGCCTTTGACCTCAA
 GTTTCCGGGAGAGTACAATAAGCACGCACAGCCGTGGATGGAGAGTGTTTATTGTCAGTTCATGGGGTGC
 TTGGCCATTCTGTCCACAGAAGTATCCGTTTTACTTTTAACTTTCTGACATTGGAAAAGTACATCTGCA
 TTGTGTATCCTTTTCGGTGTTTAAGGCCTCGAAAATGCAGAACAAATCACGGTCTGATTTTCATTTGGAT
 TATTGGGTTTATAGTGGCTTTTGTCTCACTTGGCAATAAGGAATTTTTCAAAAACACTATGGCACCAAT
 GGAGTATGCTTTCTCTTCAATCAGAAGACACGGGAAGTACTGGAGCCAGATTTATTCAGTGGTAATTT
 TTCTTGGTATTAACCTGGTGGCATTATCATCATTGTGTTCTCCTATGGAAGCATGTTTTACAGTGTTC
 TCAAAGCTCCGTAACAGTAACCGAAATACAGAAGCAAGTGAAGAAGGAGGTGGTTCTCGCCAAACGCTTT
 TTCTTTATCGTTTTACCGACGCGCTGTGCTGGATTCCCATCTTCATACTGAAATTTCTTCACTGCTTC
 AGGTGGAATACAGATTCTATTACCTCTTGGTGGTGTATTTTATTCTGCCTATCAACAGTGTCTTGAA
 CCCAATATCTACACGTTGACCACTAGACCTTTCAAGGAAATGATCCATCAACTCTGGCACAACTACAGA
 CAAAGAAGGTCTGTTGACAGGAAAGAGACTCAGAAGGCATATGCTCCATCATTCTGGGTGGAATGT
 GGCCCTTGAGGAGATGTCTCTGGTTCATGAAGCCAGGCGCTTTCACAGACCCCTGTGATCTGTCGCT
 AGTTTCTCAGTCATCTAGACTCAATTCTTATTCG

ACGCGTACGCGGCCGCTCGAG - GFP Tag - GTTTAA

Protein Sequence: >MG223089 representing NM_212452
 Red=Cloning site Green=Tags(s)

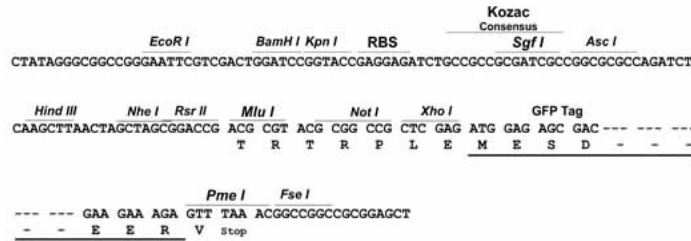
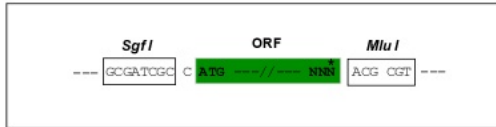
MTSGPFFFCIFIIGKYFTLGSAQDVSCPLGSFPCGNMSRCLPQLLHCNGVDDCGNRADEHCGDNNGWSL
 QLDKYFANYYYKLASTNSFEAETSECLVGSVPMHCLCRDLELDCDEANLRAVPSVSSNVTVMSLQRNFIRT
 LPPNGFRKYHELQKLCLONNRIHSVSVSAFRGLRSLTKLYLSHNRITFLKPGVFEDLHRLLEWLIIEDNHL
 SRISPLTFYGLNSLILLVLMNNALTRLDPKPLCQHMPRLHWLDFEGNRIHNLRLNLTFFISCNLTLVLMRK
 NKINYLNHAFTHLQKLELDLGSNKIENLPPNIFKDLKELSQLNISYNPIQKIEVNQFDCLAKLSLSL
 EGIEISNIQQRMFRLINLSHIYFKKFQYCGYAPHVRSCKPNTDGISSLENLLASIIQRFVWVVSAITC
 FGNIFVICMRPYIRSENKLHAMSIIISLCCADCLMGVYLFVIGAFDLKFRGEYNKHAQPWMSVHCQFMGS
 LAILESTEVSLLLLTFLTEKYICIVYPRCLRPRKCRITIVLIFIWIIGFIVAFAPLGNKEFFKNYYGTN
 GVCFLHSEDGTGTAQIYSVVIFLGINLVAFIIIVFSYGSFMFYSVHQSSVTVTEIQKQVKKEVVLAKRF
 FFIVFTDALCWIPIFILKFLSLLQVEIPDSITSWVVIFILPINSALNPIIYTLTRPFKEMIHLWHNYR
 QRRSVDRKETQKAYAPSF IWVEMWPLQEMSSGFMKPGAFDPCDLSLVSQSSRLNSYS

TRTRPLE - GFP Tag - V

Restriction Sites: SgfI-MluI

Cloning Scheme:

Cloning sites used for ORF Shuttling:

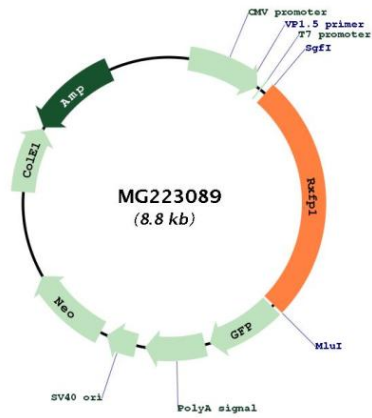


ACCN: NM_212452

ORF Size: 2274 bp

OTI Disclaimer:	<p>Due to the inherent nature of this plasmid, standard methods to replicate additional amounts of DNA in E. coli are highly likely to result in mutations and/or rearrangements. Therefore, OriGene does not guarantee the capability to replicate this plasmid DNA. Additional amounts of DNA can be purchased from OriGene with batch-specific, full-sequence verification at a reduced cost. Please contact our customer care team at custsupport@origene.com or by calling 301.340.3188 option 3 for pricing and delivery.</p> <p>The molecular sequence of this clone aligns with the gene accession number as a point of reference only. However, individual transcript sequences of the same gene can differ through naturally occurring variations (e.g. polymorphisms), each with its own valid existence. This clone is substantially in agreement with the reference, but a complete review of all prevailing variants is recommended prior to use. More info</p>
OTI Annotation:	This clone was engineered to express the complete ORF with an expression tag. Expression varies depending on the nature of the gene.
Components:	The ORF clone is ion-exchange column purified and shipped in a 2D barcoded Matrix tube containing 10ug of transfection-ready, dried plasmid DNA (reconstitute with 100 ul of water).
Reconstitution Method:	<ol style="list-style-type: none"> 1. Centrifuge at 5,000xg for 5min. 2. Carefully open the tube and add 100ul of sterile water to dissolve the DNA. 3. Close the tube and incubate for 10 minutes at room temperature. 4. Briefly vortex the tube and then do a quick spin (less than 5000xg) to concentrate the liquid at the bottom. 5. Store the suspended plasmid at -20°C. The DNA is stable for at least one year from date of shipping when stored at -20°C.
RefSeq:	NM_212452.2
RefSeq Size:	2277 bp
RefSeq ORF:	2277 bp
Locus ID:	381489
UniProt ID:	Q6R6I7
Cytogenetics:	3 E3
Gene Summary:	Receptor for relaxins. The activity of this receptor is mediated by G proteins leading to stimulation of adenylate cyclase and an increase of cAMP. Binding of the ligand may also activate a tyrosine kinase pathway that inhibits the activity of a phosphodiesterase that degrades cAMP.[UniProtKB/Swiss-Prot Function]

Product images:



Circular map for MG223089