

## Product datasheet for **MG223059**

### Acp5 (NM\_001102405) Mouse Tagged ORF Clone

#### Product data:

**Product Type:** Expression Plasmids  
**Product Name:** Acp5 (NM\_001102405) Mouse Tagged ORF Clone  
**Tag:** TurboGFP  
**Symbol:** Acp5  
**Synonyms:** TRACP; TRAP  
**Mammalian Cell Selection:** Neomycin  
**Vector:** pCMV6-AC-GFP (PS100010)  
**E. coli Selection:** Ampicillin (100 ug/mL)  
**ORF Nucleotide Sequence:** >MG223059 representing NM\_001102405  
 Red=Cloning site Blue=ORF Green=Tags(s)

TTTTGTAATACGACTCACTATAGGGCGGCCGGAATTCGTCGACTGGATCCGGTACCGAGGAGATCTGCC  
 GCC**CGATCGCC**

ATGGATTCATGGGTGGTCTGCTGGGCCTACAAATCATATGGCTCCCACTCCTGACCCACGGTACAGCCC  
 CCACTCCCACCCTGAGATTTGTGGCTGTGGCGACTGGGAGGGTCCCAATGCCCATCCACACAGC  
 CCGGAAATGGCCAATGCCAAAGAGATCGCCAGAACCGTGCAGACGATGGGCGTGACTTCATCATGTCT  
 CTGGGGACAATTTCTACTTCACTGGAGTGCACGATGCCAGCGACAAGAGTTCCAGGAGACCTTTGAGG  
 ACGTGTCTCTGACCGTGCCTTCGCAACATCCCCTGGTATGTGCTGGCTGAAACCATGATCACCTTGG  
 CAACGTCTCTGCACAGATTGCATACTCTAAGATCTCCAAGCGCTGGAACCTCCCCAGCCCTTACTACCGT  
 TTGCGCTTCAAAATCCACGTACAAACATAAAGTGTGGCCATCTTTATGCTGGACACAGTGTGTGTG  
 GCAACTCAGATGACTTTGCCAGTCAGCAGCCAAAATGCCTCGAGACCTGGGAGTGGCCCGCACTCAGCT  
 GTCCTGGCTCAAAAAGCAGTTGGCAGCAGCCAAGGAGGACTACGTTTTGGTGGCCGGCCACTACCCCATC  
 TGGTCCATCGCCGAGCAGGACCCACGCGCTGCCTGTCAAGAACTTGGCACCATTGTTAGCCACATACG  
 GGGTCACTGCCTACCTGTGTGGACATGACCACAACCTGCAGTATCTTCAGGACGAGAACGGTGTGGGCTA  
 TGTGCTGAGTGGGCGGCAACTTCATGGATCCCTCTGTGCGACATCAACGAAAGGTCCCCAACGGCTAC  
 TTGCGGTTTCACTATGGATCTGAGGACTCCCTGGGCGGCTTACACATGTGGAGATAAGCCCCAAGAAA  
 TGACCATCATATGTGGAAGCCTCTGGAAAATCACTCTTTAAGACCAGCCTCCCAAGGAGACCCAGACC  
 C

**ACGCGT**ACGCGGCCGCTCGAG - GFP Tag - GTTTAA



[View online »](#)

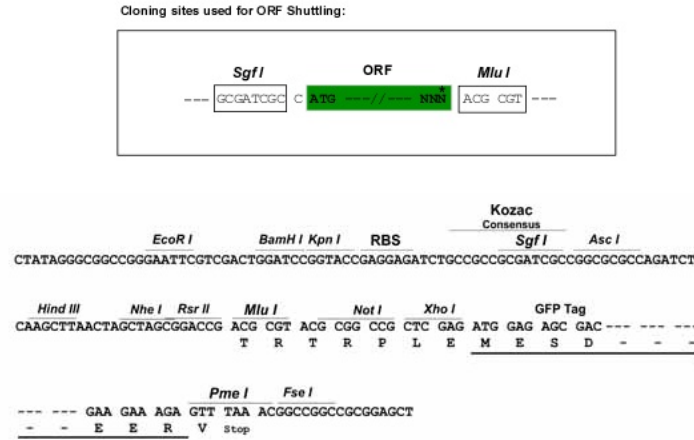
**Protein Sequence:** >MG223059 representing NM\_001102405  
Red=Cloning site Green=Tags(s)

MDSWVLLGLQIIWLPLLTHGTAPTPTLRFVAVGDWGGVNPAPFHTAREMANAKEIARTVQTMGADFIMS  
 LGDNFYFTGVHDASDKRFQETFEDVFSDRALRNIPWYVLAGNHDHLGNVSAQIAYSKISKRWNFPSYYR  
 LRFKIPRTNITVAIFMLDTVMLCGNSDDFASQQPKMPRDLGVARTQLSWLKKQLAAAKEDYVLVAGHYPI  
 WSIAEHGPTRCLVKNLRPLLATYGVTAYL CGHDHNLQYLQDENGVGYVLSGAGNFM DP SVRHQRKVPNGY  
 LRFHYGSEDSLGGFTHVEISP KEMTIIYVEASGKSLFKTSLPRRPRP

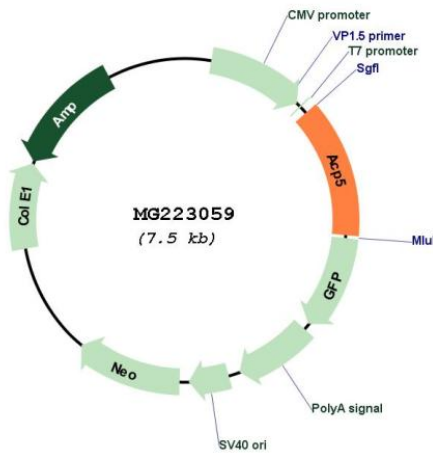
TRTRPLE - GFP Tag - V

**Restriction Sites:** SgfI-MluI

**Cloning Scheme:**



**Plasmid Map:**



**ACCN:** NM\_001102405

**ORF Size:** 981 bp

<b>OTI Disclaimer:</b>	<p>Due to the inherent nature of this plasmid, standard methods to replicate additional amounts of DNA in E. coli are highly likely to result in mutations and/or rearrangements. Therefore, OriGene does not guarantee the capability to replicate this plasmid DNA. Additional amounts of DNA can be purchased from OriGene with batch-specific, full-sequence verification at a reduced cost. Please contact our customer care team at <a href="mailto:custsupport@origene.com">custsupport@origene.com</a> or by calling 301.340.3188 option 3 for pricing and delivery.</p> <p>The molecular sequence of this clone aligns with the gene accession number as a point of reference only. However, individual transcript sequences of the same gene can differ through naturally occurring variations (e.g. polymorphisms), each with its own valid existence. This clone is substantially in agreement with the reference, but a complete review of all prevailing variants is recommended prior to use. <a href="#">More info</a></p>
<b>OTI Annotation:</b>	This clone was engineered to express the complete ORF with an expression tag. Expression varies depending on the nature of the gene.
<b>Components:</b>	The ORF clone is ion-exchange column purified and shipped in a 2D barcoded Matrix tube containing 10ug of transfection-ready, dried plasmid DNA (reconstitute with 100 ul of water).
<b>Reconstitution Method:</b>	<ol style="list-style-type: none"> <li>1. Centrifuge at 5,000xg for 5min.</li> <li>2. Carefully open the tube and add 100ul of sterile water to dissolve the DNA.</li> <li>3. Close the tube and incubate for 10 minutes at room temperature.</li> <li>4. Briefly vortex the tube and then do a quick spin (less than 5000xg) to concentrate the liquid at the bottom.</li> <li>5. Store the suspended plasmid at -20°C. The DNA is stable for at least one year from date of shipping when stored at -20°C.</li> </ol>
<b>RefSeq:</b>	<a href="#">NM_001102405.1</a> , <a href="#">NP_001095875.1</a>
<b>RefSeq Size:</b>	1425 bp
<b>RefSeq ORF:</b>	984 bp
<b>Locus ID:</b>	11433
<b>UniProt ID:</b>	<a href="#">Q05117</a>
<b>Cytogenetics:</b>	9 8.38 cM
<b>Gene Summary:</b>	May play a role in the process of bone resorption. The osteoclastic trap acts on nucleotide tri- and diphosphates with higher affinity, compared with other substrates.[UniProtKB/Swiss-Prot Function]