

Product datasheet for **MG223030**

Prmt2 (NM_133182) Mouse Tagged ORF Clone

Product data:

| | |
|---------------------------|--|
| Product Type: | Expression Plasmids |
| Product Name: | Prmt2 (NM_133182) Mouse Tagged ORF Clone |
| Tag: | TurboGFP |
| Symbol: | Prmt2 |
| Synonyms: | A1504737; Hrmt111 |
| Mammalian Cell Selection: | Neomycin |
| Vector: | pCMV6-AC-GFP (PS100010) |
| E. coli Selection: | Ampicillin (100 ug/mL) |



[View online »](#)

ORF Nucleotide Sequence:

>MG223030 representing NM_133182
 Red=Cloning site Blue=ORF Green=Tags(s)

TTTTGTAATACGACTCACTATAGGGCGGCCGGGAATTCGTCGACTGGATCCGGTACCGAGGAGATCTGCC
 GCC**GCGATCGCC**

ATGGAGGCACCAGGAGAAGTCCCTGCAGCGAGTACAGGTCATCCCGGTTCTGGAGGAAGACCCCGTGG
 ACTATGGCTGTGAGATGCAGCTCCTGCAGGATGGGGCACAGTTACAGCTGCAGCTGCAACCTGAGGAGTT
 CGTGGCCATTGCAGACTATACGGCCACCGATGAGACACAGCTCAGCTTTTTGAGAGGAGAAAAAATCTT
 ATCCTGAGACAAACCACGGCGACTGGTGGTGGGGCGAGCGCAGGCTGCTGTGGTTACATCCCTGCGA
 ACCACCTCGGCAAGCAACTGGAGGAATACGACCCGGAGGACACCTGGCAGGACGAGGAGTACTTCGACAG
 CTATGAACTCTGAACTTACCTGAAATGTTGGCTGACCAGCCTCGGACCACCAAGTACCACAGCGTC
 ATCCTGCAGAACAAGGAGTCCCTGAAGGACAAGGTCATCTGGATGTGGGCTGCGGCACCCGCATCATCA
 GCCTCTTCTGCGCACACCATGCCCGCCCAAGGCGGTCTACGCAGTGGAGGCCAGTGACATGGCCCAGCA
 CACCAGCCAGCTGGTCTGCAGAAATGGCTTTGCTGACACAATCACTGTGTTCCAGCAGAAGTGGAGGAC
 GTGGTGTGCCCGAGAAGGTGGAGCTGTGGTGTCTGAGTGGATGGGGACCTGTCTGCTGTTTGAGTTCA
 TGATCGAGTCCATCTGTATGCCCGGGACACATGGTTAAAGGGGGACGGCATCATCTGGCCAACCCAGGC
 CGCACTGCATCTGGTGCCTGCAGCGCCGAGAAAGACTACCACAGCAAGGTGCTCTTCTGGGACAACCGC
 TACGAGTTCAACCTCAGTGCACCTCAAGTCTTAGCAATCAAGGAGTTCTTTCAAGGCCAAAGTCAATC
 ATATCTTGAAGCCAGAAGACTGTCTCTGAGCCATGCACAATCTTGAGCTGGACATGAGAAGTGTGCA
 GGTCCCTGACCTGGAGACCATGCGTGGCGAACTGCGATTTGACATCCAGAAGGCTGGGACCCTGCACGGC
 TTCACAGCTTGGTTCAGTGTGTACTTCCAGAGCCTGGAGGAGGGCCAGCCTCAGCAGGTGCTCAGCACAG
 GCCCGCTGCACCCACCACACTGGAAGCAGACCTTGTTCATGATGGACGACCCAGTCCCGGTCCACAC
 GGGAGATGTGGTACGGGTTCTGTTGTGTTACAAGAAAATCCGGTATGGAGAAGGCACATGTCTGTCTCT
 CTGAGCTGGGTTGTACGTCGCACTCGATCCACGTCTCAAAGAGTTGGAGAGAAGTCTTTCCGATCT
 GGAGG

AG**GCGACCG**ACGCGTACGCGGCCGCTCGAG - GFP Tag - GTTTAA

Protein Sequence:

>MG223030 representing NM_133182
 Red=Cloning site Green=Tags(s)

MEAPGEGPCSESQVIPVLEEDPVDYGCEMQLLQDGAQLQLQPEEFVAIADYATDETQLSFLRGEKIL
 ILRQTTADWWWGERAGCCGYIPANHLGKLEEDPEDTWQDEEYFDSYGLKHLHLEMLADQPRTTYHYSV
 ILQNKESLKDKVILDVCGGTGIIISLFAHHPKAVYAVEASDMAQHTSQLVLQNGFADTITVFQKQVED
 VVLPKVDVLVSEWMTCLLFEFMIESILYARDTWLKGDIWPTTAAALHLVPCSAEKDYHSHKVLFDNA
 YEFNLSALKSLAIKEFFSRPKSNHILKPEDCLSEPCTILQLDMRTVQVPDLETMRGELRFDIQKAGTLHG
 FTAWFSVYFQSLQEQPQVLSGTLPHPTTHWKQTLFMMDDPVPVHTGDVVTGSVVLQRNPVWRRHMSVS
 LSWVVSALDPTSQRVGEKVFPIWR

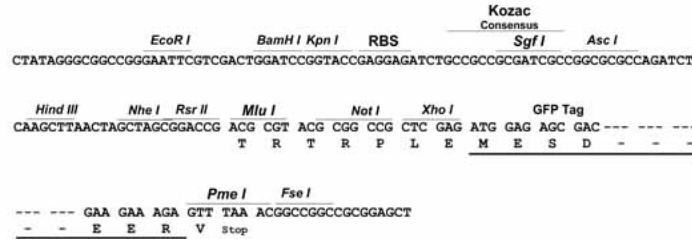
SGP**TRRRLE** - GFP Tag - V

Restriction Sites:

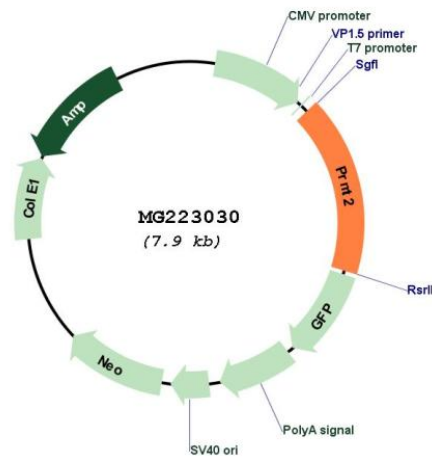
Sgfl-RsrII

Cloning Scheme:

Cloning sites used for ORF Shuttling:



Plasmid Map:



ACCN: NM_133182

ORF Size: 1335 bp

OTI Disclaimer: The molecular sequence of this clone aligns with the gene accession number as a point of reference only. However, individual transcript sequences of the same gene can differ through naturally occurring variations (e.g. polymorphisms), each with its own valid existence. This clone is substantially in agreement with the reference, but a complete review of all prevailing variants is recommended prior to use. [More info](#)

OTI Annotation: This clone was engineered to express the complete ORF with an expression tag. Expression varies depending on the nature of the gene.

| | |
|-------------------------------|---|
| Components: | The ORF clone is ion-exchange column purified and shipped in a 2D barcoded Matrix tube containing 10ug of transfection-ready, dried plasmid DNA (reconstitute with 100 ul of water). |
| Reconstitution Method: | <ol style="list-style-type: none">1. Centrifuge at 5,000xg for 5min.2. Carefully open the tube and add 100ul of sterile water to dissolve the DNA.3. Close the tube and incubate for 10 minutes at room temperature.4. Briefly vortex the tube and then do a quick spin (less than 5000xg) to concentrate the liquid at the bottom.5. Store the suspended plasmid at -20°C. The DNA is stable for at least one year from date of shipping when stored at -20°C. |
| RefSeq: | <u>NM_133182.3</u> , <u>NP_573445.2</u> |
| RefSeq Size: | 2052 bp |
| RefSeq ORF: | 1338 bp |
| Locus ID: | 15468 |
| Cytogenetics: | 10 38.74 cM |