

## Product datasheet for **MG223012**

### Cacna1e (NM\_009782) Mouse Tagged ORF Clone

#### Product data:

**Product Type:** Expression Plasmids  
**Product Name:** Cacna1e (NM\_009782) Mouse Tagged ORF Clone  
**Tag:** TurboGFP  
**Symbol:** Cacna1e  
**Synonyms:** A430040I15; alp; alpha1E; BII; Cach6; Cacn1a6; Cav2; Cav2.3; Cchr; Cchra1  
**Mammalian Cell Selection:** Neomycin  
**Vector:** pCMV6-AC-GFP (PS100010)  
**E. coli Selection:** Ampicillin (100 ug/mL)  
**ORF Nucleotide Sequence:** >MG223012 representing NM\_009782  
 Red=Cloning site Blue=ORF Green=Tags(s)

TTTTGTAATACGACTCACTATAGGGCGGCCGGAATTCGTCGACTGGATCCGGTACCGAGGAGATCTGCC  
 GCC**CGATCGCC**

ATGGCTCGCTTCGGGGAGGCGGTGGTCGTTGGCAGGCCAGGCTCAGGCGATGGAGACTCGGACCAGAGCA  
 GGAACCGACAAGGAACCCCGTCCCGCCCTCGGGCCGGCGGCCCTACAAGCAGTCAAAGCGCAGAG  
 GGCGCGGACTATGGCTTTGTACAACCCCATACCAGTCCGGCAGAAGTGTTCACGGTCAACAGATCCCTG  
 TTCATCTTCGGAGAAGATAACATTGTACAGAAATACGCCAAGAAGCTCATCGATTGGCCGCCATTGAGT  
 ACATGATCCTGGCCACCATCATTGCCAAGTGCATCGTCTTGGCCCTGGAGCAGCATCTTCTGAGGATGA  
 CAAGACCCCAATGTCTCGAAGACTGGAGAAGACAGAACCATATTTTCATTGGGATCTTCTGCTTTGAAGCT  
 GGGATCAAAATTGTGGCTCTAGGGTTCATCTCCATAAGGGTTCATACCTCCGTAATGGCTGGAATGTCA  
 TGGACTTCATCGTGGTCTTAGTGGCATCCTGGCCACTGCGGGAACCCACTTCAACACCCACGTGGACCT  
 GCGGACCTCCGGGCTGTGCGTGTCTGAGGCCTTAAAGCTGGTATCAGGAATACCTAGCCTGCAGATC  
 GTGCTGAAGTCTATCATGAAGGCCATGGTGCCTCTTGCAGATTGGCCTTCTGCTTCTTTGCCATCC  
 TCATGTTTGTATCATTGGCTTGAGTCTACAGTGGCAAGTTCATCGAGCATGCTTATGAACAATTC  
 AGGTATTCTAGAGGGTTTGATCCTCCTCACCCGTGTGGTGTGCAAGGCTGCCCGGCTGGTTATGAATGT  
 AAGGACTGGATCGGCCCAATGACGGGATCACCCAGTTTGACAACATCCTTTTTGCGGTGACTGTCT  
 TCCAATGCATCACTATGGAAGGGTGGACCACTGTGCTGTACAATACCAATGATGCCTTAGGAGCCACCTG  
 GAACTGGCTGTACTTCATCCCTCTCATCATCATCGGATCCTTCTTTGTTCTCAACCTCGTCTGGGAGTG  
 CTTTCCGGGAATTTGCCAAAGAAAGAGAGAGAGTGGAGAACCGAAGAGCGTTTCATGAAGCTCCGGCGCC  
 AGCAACAGATTGAGCGAGAATTGAACGGCTACCGTGCCTGGATAGACAAAGCAGAGGAAGTCATGCTTGC  
 TGAAGAAAATAAAAACCGGAACATCAGCCTTGGAAAGTCTCGAAGGGCAACCATCAAAGGAGCCGG  
 ACGGAGGCCATGACCCGAGACTCCAGCGATGAGCACTGCGTTGATATCTTTCAGTGGGCACACCTCTTG  
 CCAGAGCCAGTATCAAGAGCACAAAAGTAGATGGGCCTCCTATTTCCGGCACAAAGAACGGCTTCTGCG  
 CATCTCTATCCGCCACATGGTCAAGTCCCAAGTCTTTACTGGATCGTCTGAGTGTGTGGCTCTTAAT



[View online »](#)

ACTGCCTGTGTGGCCATTGTTTCATCACAACCAGCCACAGTGGCTCACTCACCTCCTCTACTATGCAGAGT  
TTTTGTTTCTGGGACTCTTCTGTTGGAGATGTCCCTGAAGATGTATGGCATGGGGCCACGCCTCTATTT  
TCACTCATCCTTCAACTGCTTTGATTTTTGGGGTACAGTGGGCAGCATCTTTGAGTTGTCTGGGCAATC  
TTCAGACTGGCAGCATCTTTTGGAACTAGTGTCTTACGAGCTCTCCGGCTCCTAAGGATATTTAAAAATA  
CCAAGTATTGGGCATCCCTCCGGAATCTGGTGTCTCCTTGATGAGCTCCATGAAGTCTATCATCAGCTT  
ACTCTTCTTCTCTTCTTCTTCTCATCGTTGTCTTTGCTCTCCTGGGAATGCAGCTCTTTGGAGGCAGTTT  
AACTTTAATGATGGGACTCCTTCAGCTAATTTTGACACCTTCCCTGCAGCTATCATGACAGTGTCCAGA  
TCCTGACAGGGGAAGACTGGAATGAGGTATGTACAATGGCATTGCTCCAGGGTGGGGTCAAGTCAAGG  
CATGTGGTCTGCCATCTACTTATTGTGTCTCACCTTGTGGAACTACACGCTGCTAAATGATTCTTG  
GCCATCGCTGTGGACAATCTGGCCAATGCCAGGAACTGACCAAGGATGAGCAGGAGGAAGAAGAAGCCT  
TCAACCAGAAACATGCACTGCAGAAGGCCAAGGAGGTGAGCCCGATGTCTGCTCCCAACATGCCTTCCAT  
TGAAAGAGACAGAAGGAGAAGACACCACATGTCGATGTGGGAGCCACGCAGCAGCCACTGAGGGAGCGG  
AGGCGCCGCCACCATGTCTGTGTGGGAACAACGCACCAGCCAGCTGAGGAGGCACATGCAAAATGTCTA  
GCCAAGAAGCCCTCAACAAGAGGAGGCCCGCCAATGAACCCCTCAATCCACTCAACCCACTGAGTCC  
TCTCAACCCCTCAATGCTCACCCAGCCTTTATCGGAGGCCAGGCCATTGAGGGCTAGCCCTAGGT  
CTGGGTCTTGAAAAGTGTGAAGAAGAACCATCAGTCTGGGGGGTCCCTCAAGGGGACATAGGGGGCC  
TGACTAGCGCCCTGGACAACCAGAGGAGCCCTTGTCTTGGGCAACCGGAGCCACCGTGGCTGCCTAG  
ATCCTGTGATGGAACCTGTGACCAATCCAGCAGGAGGCTGGGGGAGGAGAGACTGTGGTACTTTTGG  
GACCCGGCCAGGCACAGGCAGAGTCAAGGGCGAAGCCGGCATCGCCGAGTCAAGGACTGAGGGCAAGGACT  
CTGCCTCTGCATCCCGAAGCAGGTCTGCCAGCCAGGAGCGGAGTCTGGATGAAGGGGTGTCCGTTGAGGG  
GGAGAAGGAACATGAGCCTCACAGCAGCCACAGGAGCAAGAGCCGACCATCCACGAAGAGGAGAGAACC  
CAGGACTTAAGGAGGACCAACAGTCTGATGGTCCCAGGGGCTTGACTGGTAGGGGCTTTGATGAAG  
CAGAAACACCTTAGTCCAGCCCAACCTGAGCTGGAAGTGGGAAGGATGCAGCTCTGACAGAGCAGGA  
GGCTGAAGGCAGCAGTGAACAAGCCCTTCTGGGGACGTACAGCTGGATGTGGCCCGGGCATTAGCCAG  
AGTGAACCGGATCTCTCTGCATGACAGCCAACATGGACAAGGCTACCACGGAGAGCACCAGTGTACCG  
TCGCCATCCCTGATGTGGACCCCTTGGTGGACTCGACAGTGGTGAACATTAGCAACAAGCAGGATGGAGA  
AGCCAGTCCCTGAAGGAGGCAGAGACTAAAGAGGAAGAAGAAGAGGTAGAGAAGAAGAAGAAGCAGAAG  
AAGGAGAAGCGAGAGACTGGAAAAGCCATGGTGGCCCATAGCTCTATGTTTCTTACAGCACCCTAACCC  
CGATCCGAGGGCTGCCACTACATTGTGAACCTACGCTACTTTGAAATGTGCATTCTCTTGGTATTGC  
GGCCAGCAGCATTGCCCTGGCAGCCGAGGACCCTGTAACCTAAGTCCGAGCGTAACAAGTCTGAGA  
TATTTGACTATGTTTTACAGGAGTGTTTACCTTTGAGATGGTTATAAAGATGATAGCCAAGGCTTGA  
TCCTGCAGGATGGATCATACTTCAAGAGCTCTGGAACATCCTGGACTTTGTAGTGTGGTGGTGCATT  
GGTAGCATTGCTCTGGCGAACGCTTTGGGAACCAACAAGGGGAGGGATATCAAGACTATCAAGTCTCTG  
AGGGTACTTTCAGTCTGCGGCCACTGAAAACCATCAAGCGCTTGCCCAAGCTGAAGGCTGTGTTTACT  
GCGTGTGACCTCCTTGAAGAATGTCTTCAACATACTCATTGTCTACAAGCTCTTCAATGTTTCTTGC  
CGTCATCGCTGTTTCAAGTATTCAAAGGAAAGTCTTTTATTGCACTGACAGTTCGAAGCACAGAGAAG  
GAGTGCATAGGCAACTATGTAGACCACGAGAAAAACAAGATGGAGGTGAAGGGCCGGGAATGGAAGCGTC  
ATGAATCCACTATGACAACATCATCTGGGCCCTGCTTACCCTTTCACAGTCTCTACAGGGGAAGGATG  
GCCTCAGGTTCTGCAGCACTCTGTAGATGTGACAGAGGAGCAGAGGCCAAGTCCGAGCAACCCGATG  
GAGATGTCCATCTTTTATGTGGTCTACTTTGTGGTCTTCCCTTTCTTTTGTCAATATCTTCTGGCTC  
TCATTATCATCACCTTCCAGGAGCAAGGGGACAAGATGATGGAGGAGTGTAGCCTGGAGAAGAATGAGCG  
GGCATGCATCGACTTCGCCATTAGTGCCAAACCTCTCACCGCTACATGCCACAGAACAGGCACACCTTC  
CAGTACCGTGTGTGGCACTTTGTAGTCTCCCCATCCTTTGAGTATACCATCATGGCCATGATTGCCTTGA  
ACACTGTCGTGCTGATGATGAAGTACTACTCTGCTCCTTGACCTATGAGCTCGCCTTAAAGTACCTGAA  
CATCGCCTTCACTATGGTGTTCCTGGAGTGTGCTTAAAGGTCATTGCTTTCGGCTTCTGAACTAT  
TCCGAGATACCTGGAACATCTTACTTCACTACCGGTGATCGGCAGTATCACAGAAATTATCCTGACAG  
ATAGCAAGCTGGTGAACACCAGTGGCTCAATATGAGCTTCTGAAGCTTTCGAGCTGCACGGCTCAT  
AAAGCTTCTGAGACAGGGCTACACCATCCGCATCTTACTGTGGACCTTCTGTCAGTCTTTAAGGCTCTT  
CCCTACGCTGCCTTCTCATTGCCATGCTTTTCTTCTCATCTACGCCATCATTGGGATGCAGGTGTTTGGAA  
ACATAAAGTTAGATGAGGAGAGTACATCAACCGGCACAACAACCTCCGGAGTTTCTTGGATCCCTCAT  
GCTGCTTTTCAAGGAGTGCACGGGGGAGGCTTGGCAGGAGATTGCTGTCTGTCTCGGTGAGAAGGGT  
TGTGAGCTGACACCACTGCACCCTCAGGGCAGAATGAGAGTGTGGCCTGTGGCACTGACCTGGCCTACG

TTTATTTGTCTCCTTCATCTTCTTCTGCTCCTTCTGATGCTCAACCTGTTCTGGCTGTCATCATGGA  
CAACTTTGAGTACCTGACTCGAGATTCCTCCATCCTGGGGCTCACCACTTAGATGAGTTTGTCCGTGTC  
TGGGCAGAATATGACAGAGCAGCATGTGGCCGATCCATTACACTGAGATGTATGAAATGCTGACTCTCA  
TGTACCACCCGCTAGGCCTCGGCAAGAGATGTCCCTCCAAAGTGGCCTATAAGAGGCTGGTCTGATGAA  
CATGCCAGTGGCTGAGGACATGACAGTCCACTTCCCTCCACACTTATGGCTCTGATCCGGACAGCTCTG  
GACATTAATAATCGCCAAAGGTGGTGCAGACAGACAGCTAGACTCGGAGCTGCAAAAAGAGACCCCTGG  
CCATTTGGCCTCACCTGTCCCAAAAGATGTTGGATCTGCTTGTGCCCATGCCAAAGCCTCTGACTGAC  
TGTGGGCAAGATCTATGCAGCAATGATGATCATGGACTACTATAAACAGAGTAAGGTAAAGAAAACAGAGA  
CAGCAGCTGGAAGAACAGAAAAATGCACCCATGTTCCAGCGCATGGAGCCCTCATCACTGCCTCAGGAGA  
TCATTGCTAATGCCAAAGCCCTGCCTTATCTCCAGCAGGACCCTGTTTCTGGCCTGAGTGGTCGGAGTGG  
ATACCTTCAATGAGTCCACTCTCCCTCAAGAAATATCCAGTTGGCTTGTATGGACCCAGCGGATGAT  
GGACAATCCAGGAACAACAATCTCTGGTGGTAACAGACCCTAGCTCTATGCGACGTTTCAATTTCTACAA  
TTCGGGATAAGCGTTCAAATTCCTCTGGTTGGAGGAGTTCTCCATGGAACGCAGCAGTAAAAACTTA  
CAAGTCGCGGCGCAGAAGTTACCATTCTCCCTGAGGCTGTCAGCACCCGCCTGAATTCTGACTCTGGT  
CACAAGTCTGACTCACCGATCAGGAGCAGGGAGAGGCGGATCCAAAGAACGAAAGCACCTCTCT  
CTCCAGATGTCTCCCGCTGCAATTCTGAAGAGCGAGGGACCCAGGCCGACTGGGAGTCCCGAGAAGCTCG  
CCAGTCCAGGTACCCAGTGAAGGAAGGTCACAGACCCCCAATAGACAGGGTACCGGTTCCCTAAGTGAG  
AGCTCCATCCCCTCTATTTCCGACACCAGCACCCCAAGACGAAGCCGTCGCCAGCTCCCACCTGTGCCAC  
CAAAGCCTCGTCCCCTCTCTCTACAGCTCCCTGATGAGACACACTGGCGGCATCTCTCCACCTCTGA  
TGGAAGTGAAGGTGGATCCCCACTGGCCTCTCAAGCTCTGGAGAGCAACAGCGCTTGCCTGACCGAGTCT  
TCCAACCTTGCACCCCAGCAGGGCCAGCATCCTTCCCACAGCACTACATCTCCGAGCCCTATCTGG  
CCCTCCATGAAGACTCCCACGCCTCAGACTGTGGCGAGGAGGAGACTCACCTTTGAGGCAGCCGTAGC  
CACTAGCTTGGGCCGGTCCAATACCATTGGCTCTGCGCCACCCCTACGGCACAGCTGGCAGATGCCTAAT  
GGGCACTATCGGCGGCGAGGCGTGGGGGGCCTGGGCCTGGCATGATGTGTGGAGCTGTCAGTGACCTCC  
TGAGTGACACGGAAGAAGACGATAAGTGC

ACGCGTACGCGGCCGCTCGAG - GFP Tag - GTTTAA

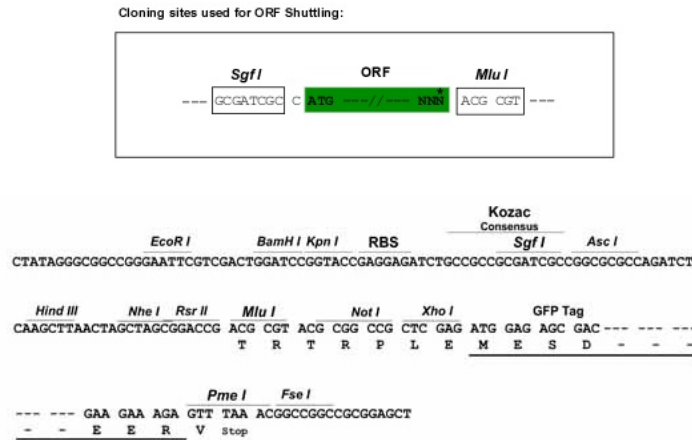
**Protein Sequence:** >MG223012 representing NM\_009782  
 Red=Cloning site Green=Tags(s)

```
MARFGEAVVVGRPGSGDGDSDQSRNRQGTVPVPSGPAAYKQSKAQRARTMALYNPPIVVRQNCFTVNRSL
FIFGEDNIVRKYAKKLIDWPPFEYMILATIIANCIVLALEQHLPEDDKTPMSRRLEKTEPYFIGIFCFEA
GIKIVALGFIFHKGSYLRNGWNVDMDFIVVLSGILATAGTHFNTHVDLRTLRAVRVLRPLKLVSGIPSLQI
VLKSIMKAMVPLLQIGLLLFFAILMFAIIGLEFYSGKLRACFMNNSGILEGFDPHPHPCGVQGPCAGYEC
KDWIGPNDGITQFDNILFAVLTVFQCITMEGWTTVL YNTNDALGATWNWLYFIPLIIIGSFFVLNLVGLV
LSGEFAKERERVENRRAFMKLRQQQIERELNGYRAWIDKAAEVM LAEENKNSGTSALEVLRRAITIKRSR
TEAMTRDSSDEHCVDISSVGTPLARASIKSTKVDGASYFRHKERLLRISIRHMVKSQVFYWI VLSVVALN
TACVAIVHHNQPWLTLLYYAEFLFLGLFLEMSLKM YGMGPRLYFHSSFCNCFDGVTVGSI FEVWVAI
FRPGTSFGISVLRALRLRIFKITKYWASLRNLV VSLMSSMKSIISLLFLLFLFIVV FALLGMQLFGGRF
NFNDGTPSANFDTFPAAIMTVFQILTGEDWNEVMYNGIRSQGGVSSGMWSAIYFIVLTLFGNYTLLNVFL
AIAVDNLANAQELTKDEQEEEEAFNQKHALQKAKEVSPMSAPNMP SIERDRRRRRHHMSMWEPRSSHLRER
RRRHHMSVWEQRTSQLRRHMQMSSQEALNKEEAPPMNPLNPLNPLSPLNPLNAHPSLYRRPRPIEGLALG
LGLEKCEEERISRGGSLKGDIGGLTSALDNQRSPLSLGKREPPWLP RSCHGNCDPIQQEAGGGETVVTFE
DRARHRQSQRSRHRRVTEGKDSASASRSASQERSLDEGVSVEGEKEHEPHSSHRSKEPTIHEEERT
QDLRRTNSLMVPRGSLV GALDEAETPLVQPQPELEVGDAAALTEQEAEGSSEQALLGDVQLDVGRGISQ
SEPDLSCTANMDKATTESTSVTVAIPDVDPVLDSTVVNI SNKTDGEASPLKEAETKEEEEEVEK KKKQK
KEKRETGKAMVPHSSMFIFSTTNPIRRACHYIVNLR YFEMCILLVIAASSIALAAEDPVL TNSERNKVL R
YFDYVFTGVFTFEMVIKIDQGLILQDGSYFRDLWNILDF VVVVGALVAFALANALGTNKG RDIKIKSL
RVLRLVLRPLKTIKRLPKLKAVFDCVVTSLKNVFNIL IVYKLFMFI FAVIAVQLFKGKFFYCTDSSKDTEK
ECIGNYVDHEKNKMEVKGREWKRHEFYHDNI IWALLTLFTVSTGEGWPQVLQHSVDVTEEDRGP SRSNRM
EMSI F YVYVYFVVPFFVNI FVALIIITFQE QGDKMMEEC SLEKNERACIDFAISAKPLTRYMPQNRHTF
QYRVWHFV VSPSFEYTIMAMIALNTVVLMMKYYSAPCTYELALKYL NIAFTMVFSLECVLKVIAFGFLNY
FRDTWNIFDFITVIGSITEIILTDSKLVNTSGFNMSFLKLFRAARLIKLLRQGYTIRILLWTFVQSFKAL
PYVCLLIAMLFFIYAIIGMQVFGNIKLDEESHINRHNNFRSFFGSLMLLFRSATGEAWQEIMLSCLGEKG
CEPDTTAPSGQNESERCGTDLAYVYFVSFIFFC SFLMLNLFVAVIMDNFEYLTRDSSILGPHHLDEFVRV
WAEYDRAACGRIHYTEMYEMLTLMSPPLGLGKRCP SKVAYKRLVLMNMPVAEDMTVHFTSTLMALIRTAL
DIKIAKGGADRQQLDSELQKETLAIWPHLSQKMLD LVPMPKASDLTVGKIYAAMMIMDYKQSKVKKQR
QQLEEQKNAPMFQRMPESSLPQEIIANAKALPYL QQDPVSGLSGRSGYPSMSPLSPQEIFQLACMDPADD
GQFQEQQSLVVTDPSSMRRSFSTIRDKRSNSWLEEF SMERSSENTYKSRRRSYHSSLRLSAHRLNSDSG
HKSDTHRSGGRERGRSKERKHLSPDVSR CNSEERGTQADWESPERRQSRSPSEGRSQT PNRQGTGSLSE
SSIPSIDTSTPRRSRRLPPVPPKPRLLSYSSLMRHTGGI SPPPDGSEGGSPLASQALESNSACLTES
SNSLHPQQGHPSPQHYISEPYLALHEDSHASDCGEEETLTFEAAVATSLGRSNTIGSAPPLRHSWQMPN
GHYRRRRRGGPGPMCGAVSDLLSDTEEDDKC
```

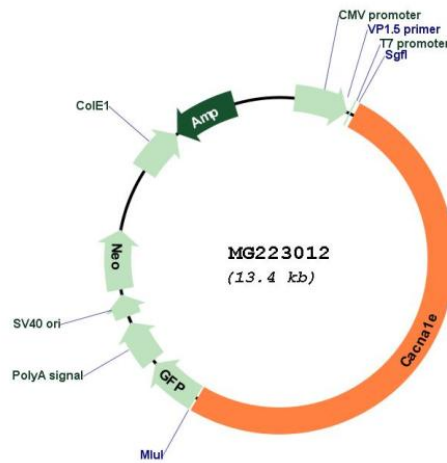
TRTRPLE - GFP Tag - V

**Restriction Sites:** SgfI-MluI

Cloning Scheme:



Plasmid Map:



ACCN: NM\_009782  
 ORF Size: 6819 bp

OTI Disclaimer: The molecular sequence of this clone aligns with the gene accession number as a point of reference only. However, individual transcript sequences of the same gene can differ through naturally occurring variations (e.g. polymorphisms), each with its own valid existence. This clone is substantially in agreement with the reference, but a complete review of all prevailing variants is recommended prior to use. [More info](#)

OTI Annotation: This clone was engineered to express the complete ORF with an expression tag. Expression varies depending on the nature of the gene.

<b>Components:</b>	The ORF clone is ion-exchange column purified and shipped in a 2D barcoded Matrix tube containing 10ug of transfection-ready, dried plasmid DNA (reconstitute with 100 ul of water).
<b>Reconstitution Method:</b>	<ol style="list-style-type: none"><li>1. Centrifuge at 5,000xg for 5min.</li><li>2. Carefully open the tube and add 100ul of sterile water to dissolve the DNA.</li><li>3. Close the tube and incubate for 10 minutes at room temperature.</li><li>4. Briefly vortex the tube and then do a quick spin (less than 5000xg) to concentrate the liquid at the bottom.</li><li>5. Store the suspended plasmid at -20°C. The DNA is stable for at least one year from date of shipping when stored at -20°C.</li></ol>
<b>RefSeq:</b>	<u>NM_009782.3, NP_033912.2</u>
<b>RefSeq Size:</b>	12697 bp
<b>RefSeq ORF:</b>	6822 bp
<b>Locus ID:</b>	12290
<b>Cytogenetics:</b>	1 66.14 cM
<b>Gene Summary:</b>	This gene encodes an integral membrane protein that belongs to the calcium channel alpha-1 subunits family. Voltage-sensitive calcium channels mediate the entry of calcium ions into excitable cells and are also involved in a variety of calcium-dependent processes. Voltage-dependent calcium channels are multi-subunit complexes, comprised of alpha-1, alpha-2, beta and delta subunits in a 1:1:1:1 ratio. The isoform alpha-1E gives rise to R-type calcium currents and belongs to the high-voltage activated group. Calcium channels containing the alpha-1E subunit may be involved in the modulation of neuronal firing patterns, an important component of information processing. [provided by RefSeq, Jul 2008]