

Product datasheet for **MG222994**

Rock2 (NM_009072) Mouse Tagged ORF Clone

Product data:

Product Type:	Expression Plasmids
Product Name:	Rock2 (NM_009072) Mouse Tagged ORF Clone
Tag:	TurboGFP
Symbol:	Rock2
Synonyms:	B230113H15Rik; mKIAA0619; Rho-kinase; Rock-II; Rock2m; ROKalpha
Mammalian Cell Selection:	Neomycin
Vector:	pCMV6-AC-GFP (PS100010)
E. coli Selection:	Ampicillin (100 ug/mL)
ORF Nucleotide Sequence:	>MG222994 representing NM_009072 Red=Cloning site Blue=ORF Green=Tags(s)

TTTTGTAATACGACTCACTATAGGGCGGCCGGAATTCGTCGACTGGATCCGGTACCGAGGAGATCTGCC
GCC**CGATCGCC**

ATGAGCCGGCCCCCGCCGACGGGAAAAATGCCCGGCGCCCCGAGACCGCGCCGGGGACGGGGCGGGCG
CCGGCCGTCAGAGGAAGCTGGAGGCGCTCATCCGAGACCCTCGCTCGCCATCAACGTGGAGAGTCTGCT
GGATGGCTTAAATTCCTTGGTCTTGTATTTGGATTTTCTGCTTTGAGGAAAAATAAAAAATAGATAAC
TTCTTAAATAGATATGAGAAAAATGTGAAAAAATCAGAGTTTACAGATGAAAGCGGAAGACTATGATG
TTGTAAGATTATTGGAAGAGGTGCTTTTGGTGAAGTTCAGTTGGTTCGTCATAAGGCATCACAGAAGGT
TTATGCAATGAAGCTTCTTAGTAAATTTGAAATGATAAAAAGATCAGATTCTGCTTTTTCTGGGAAGAA
AGAGATATTATGGCCTTTGCCAACAGTCCCTGGGTAGTTCAGCTCTTCTGTGCCTTTCAAGATGACAGGT
ACCTGTACATGGTGTGAGTACATGCCAGGCGGAGACCTCGTCAACCTTATGAGTAATTATGATGTACC
TGAAAAGTGGGCAAGTTTTACTGCTGAAGTAGTGCTTGCCTGGATGCAATACACTCCATGGGCTTA
ATACACAGAGATGTGAAGCCTGATAACATGCTATTGGATAAACATGGACATCTAAAGTTAGCAGATTTTG
GCATATGATAAAATGGATGAAACAGGCATGGTGCATTGCGACACAGCAGTTGGAATCCCGACTACAT
ATCGCCGAGGTTCTGAAATCACAGGAGGTGATGGTACTATGGGCGAGAATGTGATTGGTGGTCTGTA
GGTGTTCCTTTTGGATGTTAGTAGGGGACACTCCATTTACGCAGATTCACCTGTAGGAACCTACA
GCAAAATTATGGATCATAAAAAATCACTGTGTTTTCTGAAGATACAGAAATTTCTAAACATGCGAAGAA
TCTCATATGTGCCTTCTTAACAGACAGGAGGTACGACTTGAAGAAAATGGGTAGAAGAAATCAAACAG
CATCCTTTCTTTAAGAATGATCAATGGAATTGGGATAACATAAGAGAGACGGCAGCTCCAGTGGTACCTG
AGCTCAGCAGTGACATAGACAGCAGCACTTTGACGACATTGAGGATGACAAAGCGATGTAGAGACCTT
CCCGATTCTAAAGCTTTTGTGGAAAATCAGCTGCCTTTTATAGGATTTACCTACTTTAGAGAAAATTTG
TTATTAAGTGACTCTCCACCTTGTAGAGAAAATGATGCAATACAAACAAGGAAAAGTGAAGAAAAGTCAGG
AGATTCAGAAAAAATTATGCACTAGAAGAACACCTTAGCAGTGAGGTGCAAGCCAAGGAGGAGCTGGA
ACAGAAGTGCAAACTATTAATACTCGCCTAGAGAAAACAGCAAAGGAGCTAGAAGAAGAGATTACCTTA



CGGAAAAGTGTGGAATCAACATTAAGACAGCTGGAAAAGAGAAAAGGCCCTTCTTCAGCACAAAAATGCAG
AGTATCAGCGGAAAGCTGATCATGAAGCCGACAAGAAGCGGAAGCTTGGAAAATGATGTTAACAGCTTAAA
AGATCAACTTGAAGATCTGAAGAAAAGGAACCAGAGCTCTCAGATATCCACTGAGAAGGTCAATCAGCTC
CAGAAACAACTGGATGAAGCTAATGCTTTGCTGAGAACAGAGTCTGATACTGCAGCACGGTTAAGAAAA
CCCAGGCAGAAAGTTCAAACAGATTGAGCAGCTGGAATCTAACAAATAGAGATCTACAAGATAAAAACTG
CCTGCTTGAGACTGCCAAGTTAAAAGTTGAAAAGGAATTTATCAATCTTCAGTCAGCTTTAGAATCTGAA
AGAAGGGACCGGCCATGGATCAGAGATAATTAATGATTTACAAGGTAGAATATCTGGGTTGGAAGAAG
ATTTGAAGACTGGCAAAGCCTTACTAGCAAAAAGTAGAGCTGGAGAAGAGACAGCTGCAGGAGAAGCTCAC
TGACTTAGAGAAGGAAAAAGCAACATGAAAATAGATATGACATATCAACTGAAAAGTTATACAGCAGAGT
TTAGAACAAGAAGAAGCTGAACACAAGACCACAAAAGCACGGCTAGCGGATAAAAAAAGATCTATGAAT
CCATTGAAGAAGCTAAATCAGAAGCCATGAAAAGAAATGGAGAAGAAGCTGTTGGAAGAGAGGTCTTTAAA
GCAGAAAGTGGAGAACCTGCTCCTGGAAGCCGAGAAAAGATGCTCTATATTGGACTGTGACCTCAAACAG
TCTCAGCAGAAGCTAAATGAGCTGCTGAAGCAGAAAGATGTGCTGAACGAGGATGTTAGAAATTTGACAT
TAAAAATAGAGCAGGAACTCAGAAGCGTTGTCTTATGCAAAATGACCTGAAGATGCAGACCCAACAAGT
TAACACCTAAAAATGTCAGAAAAGCAATAAAACAAGAAAATAATCATCTTATGAAAATGAAAATGAAC
TTGGAAAAGCAAAAATACTGAACTTCGAAAAGAGCGGCAGGATGCAGATGGGCAGATGAAGGAACTGCAAG
ACCAACTTGAAGCAGAGCAGTATTTCTCAACCCTCTATAAAACACAAGTTAGAGAAGCTTAAAGAAGAAAA
TGAAGAGAAGACAAAAGCTTTGTAAGAGATTGCAACAGAAGAAGCAGGATTTACAGGATGAAAAGAGACTCT
TTGGCTGCCAGCTGGAATACCTTACCAAAGCAGATTCTGAGCAGCTGGCTCGTTCCATTGCTGAAG
ACAATACTCTGATTTGGAAAAGAGAAGATCATGAAAGAGCTGGAGATCAAAGAGATGATGGCTAGACA
CAAACAAGAACTTACTGAAAAGGATACTACAATTGCATCTTTGAAGAAACAAATAGGACACTAACTAGC
GATGTTGCAAACTTTGCAAAATGAGAAAAGAAATTAACAACAAGCTGAAAGATAGCCAAGAACAAGTGT
CCAAGTTGAAAGATGAAGAGATGAGTGACAGCTATTAAGCAGCAGTTTGAAGCAGCTTCTGAATGA
GAGAAGTCTCAAGACTCAAGCTGTAATAAGTTGGCGGAGATCATGAATCGAAAAGAACCTGTCAAGCGT
GGTAGTGACACAGATGTGCGAAGAAAAGAGAAGGAAAACAGAAAGCTACATATGGAGCTTAAAGTCTGAAC
GTGAAAATTGACACAACAGATGATCAAAATCAGAAAAGAACTGAATGAAATGCAGGCTCAAATAGCTGA
AGAGAGCCAAATTCGAATAGAAGTCCAGATGACCCTGGACAGTAAAGACAGCGACATTGAACAGCTGCGG
TCACAGCTCCAGGCTTGCATATTGGTATGGACAGTTCAGTATAGGCAGTGGACCAGGCGATGCTGAGC
CTGATGATGGATTTCCAGAATCAAGATTAGAAGGATGGTTGTCTTGCCTGTGCGCAACAACACTAAAAA
GTTTGGATGGTTAAAAAGTATGTGATTGTAAGCAGCAAGAAGATTCTTTTTTATGACAGCGAACAAGAT
AAAGAGCAGTCCAACCTTACATGGTGTAGACATAGACAAGCTATTTACGTCAGCTGTTACCCAGA
CAGATGTATACAGAGCAGATGCTAAAGAAATCCAAGGATATTTAGATTCTATATGCCAATGAAGGAGA
AAGTAAGAAGGAACCAGAGTTTCCAGTGGAAACAGTGGGAGAAAAATCTAATTATATTTGTCACAAAGGA
CATGAGTTTATCTACTCTTTATCACTTCCCAACCAACTGTGAGGCATGTATGAAGCCGCTGTGGCACA
TGTTTAAGCCTCCTCCTGCTCTAGAGTGCCGTAGGTGCCACATTAATGTGATAAAGATCACATGGACAA
GAAGGAAGAGATTATAGCGCCCTGCAAAGTTTATTATGATATATCGTCGGCAAAGAATCTGTTGTTATTA
GCAAAATTAACAGAAGAACAGCAGAAATGGGTTAGTCGGTTGGTAAAAAGATACCTAAAAAGCCTCCAG
CTCCAGACCTTTTGCCCGATCATCCCTAGAAGTCAATGAAAATACAACAAAACAGTCCATTCGGCG
GCCAGTCGACAGCTTGCTCAAACAAGCCAAGC

ACGCGTACGCGGCCGCTCGAG - GFP Tag - GTTTAA

Protein Sequence: >MG222994 representing NM_009072
 Red=Cloning site Green=Tags(s)

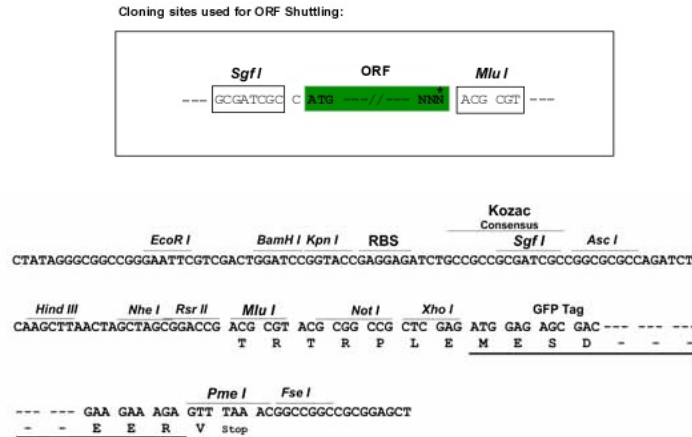
MSRPPPTGKMPGAPETAPGDGAGAGRQRKLEALIRDPRSPINVESLLDGLNSLVLDLDFPALRKNKNIDN
 FLNRYEKIVKKIRGLQMKAEYDVVKVIGRGAFGEVQLVRHKASQKVYAMKLLSKFEMIKRSDSAFFWEE
 RDIMAFANSPWVVLFCFAFQDDRYLYMVMEYMPGGDLVNLMSNYDVPEKAKFYTAEVVLALDAIHSMGL
 IHRDVKPDNMLLDKHHGLKLADFGTCMKMDETMVHCDDTAVGTPDYISPEVLKSSQGGDGYGREGDWWSV
 GVFLFEMLVGDTPFYADSLVGTYSKIMDHKNSLCFPEDTEISKHAKNLICAFLLTDREVRLGRNGVEEIKQ
 HPFFKNDQWNWDNIRETAAPVVPELSSDIDSSNFDDIEDDKGDVETFPKAFVGNQLPFIQFTYFRENL
 LLSDSPPCRENDAIQTRKSEESQEIQKKLYALEEHLSSVEVQAKEELEQKCKSINTRLEKTAKEEEEEITL
 RKSVESTLRQLEREKALLQHNAEYQRKADHEADKRNLENDVNSLKDQLEDLKKRNQSSQISTEKVNQL
 QKQLDEANALLRTESDTAARLRKTAESSKQIQQLSNNRDLQDKNCLLETAKLKLEKEFINLQSALESE
 RRDRTHGSEIINDLQGRISGLEEDLKTGKALLAKVELEKRQLQEKLTDLEKEKSNMEIDMTYQLKVIQSS
 LEQEEAEHKTTKARLADKNKIYESIEEAKSEAMKEMEKLLLEERSLKQKVENLLLEAEKRCSILDCDLKQ
 SQQKLNELLKQKQDVLNEDVRNLTLKIEQETQKRCMLQNDLKMQTQQVNTLKMSEKQIKQENNHLMEMKMN
 LEKQNTLRKERQDADGQMKELQDQLEAEQYFSTLYKTQVRELKEEENEKTKLCKELQKQKQDLQDERDS
 LAAQLEITLTKADSEQLARSAIEEQYSLEKEKIMKELEIKEMMARHKQELTEKDTTIIASLEETNRTLTS
 DVANLANEKEELNNKLDKSQELSKLKDEEMSAAIKAQFEKQLLNERTLKTQAVNKLAEIMNRKEPVKR
 GSDTDVRRKEKENRKLHMLKSEREKL TQMIKYQKELNEMQAQIAEESQIRIELQMTLDSKSDIEQLR
 SQLQALHIGMDSISGSGPDAEPDDGFPESTRLEGWLSLPVRNNTKFGWVKYVIVSSKILFYDSEQD
 KEQSNPYMVLIDIDL FHRPVVTQTDVYRADAKEIPRIFQILYANEGESKKEPEFPVPEVGEKSNYICHKG
 HEFIPTLYHFPTNCEACMKPLWHMFKPPPALCRRCHIKCHKDHMDKKEEIIAPCKVYYDISAKNLLLL
 ANSTEEQQKWVSRLLVKKIPKKPPAPDPFARSSPRTSMKIQQNQSIRRRPSRQLAPNKPS

TRTRPLE - GFP Tag - V

Chromatograms: https://cdn.origene.com/chromatograms/ja1585_g01.zip

Restriction Sites: SgfI-MluI

Cloning Scheme:

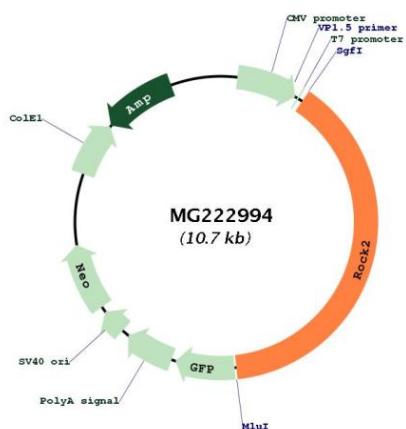


ACCN: NM_009072

ORF Size: 4164 bp

OTI Disclaimer:	The molecular sequence of this clone aligns with the gene accession number as a point of reference only. However, individual transcript sequences of the same gene can differ through naturally occurring variations (e.g. polymorphisms), each with its own valid existence. This clone is substantially in agreement with the reference, but a complete review of all prevailing variants is recommended prior to use. More info
OTI Annotation:	This clone was engineered to express the complete ORF with an expression tag. Expression varies depending on the nature of the gene.
Components:	The ORF clone is ion-exchange column purified and shipped in a 2D barcoded Matrix tube containing 10ug of transfection-ready, dried plasmid DNA (reconstitute with 100 ul of water).
Reconstitution Method:	<ol style="list-style-type: none">1. Centrifuge at 5,000xg for 5min.2. Carefully open the tube and add 100ul of sterile water to dissolve the DNA.3. Close the tube and incubate for 10 minutes at room temperature.4. Briefly vortex the tube and then do a quick spin (less than 5000xg) to concentrate the liquid at the bottom.5. Store the suspended plasmid at -20°C. The DNA is stable for at least one year from date of shipping when stored at -20°C.
RefSeq:	NM_009072.2 , NP_033098.2
RefSeq Size:	8012 bp
RefSeq ORF:	4167 bp
Locus ID:	19878
UniProt ID:	P70336
Cytogenetics:	12 A1.1
Gene Summary:	Protein kinase which is a key regulator of actin cytoskeleton and cell polarity. Involved in regulation of smooth muscle contraction, actin cytoskeleton organization, stress fiber and focal adhesion formation, neurite retraction, cell adhesion and motility via phosphorylation of ADD1, BRCA2, CNN1, EZR, DPYSL2, EP300, MSN, MYL9/MLC2, NPM1, RDX, PPP1R12A and VIM. Phosphorylates SORL1 and IRF4. Acts as a negative regulator of VEGF-induced angiogenic endothelial cell activation. Positively regulates the activation of p42/MAPK1-p44/MAPK3 and of p90RSK/RPS6KA1 during myogenic differentiation. Plays an important role in the timely initiation of centrosome duplication. Inhibits keratinocyte terminal differentiation. May regulate closure of the eyelids and ventral body wall through organization of actomyosin bundles. Plays a critical role in the regulation of spine and synaptic properties in the hippocampus. Plays a role in placental homeostasis during the perinatal period. Plays an important role in generating the circadian rhythm of the aortic myofilament Ca(2+) sensitivity and vascular contractility by modulating the myosin light chain phosphorylation. [UniProtKB/Swiss-Prot Function]

Product images:



Circular map for MG222994