

Product datasheet for **MG222968**

Ctnnd2 (NM_008729) Mouse Tagged ORF Clone

Product data:

Product Type:	Expression Plasmids
Product Name:	Ctnnd2 (NM_008729) Mouse Tagged ORF Clone
Tag:	TurboGFP
Symbol:	Ctnnd2
Synonyms:	Catnd2; neurojugin; Nprap
Mammalian Cell Selection:	Neomycin
Vector:	pCMV6-AC-GFP (PS100010)
E. coli Selection:	Ampicillin (100 ug/mL)
ORF Nucleotide Sequence:	>MG222968 representing NM_008729 Red=Cloning site Blue=ORF Green=Tags(s)

TTTTGTAATACGACTCACTATAGGGCGGCCGGAATTCGTCGACTGGATCCGGTACCGAGGAGATCTGCC
GCC**CGATCGCC**

ATGTTTCGCCAGGAAGCAGTCGGGCGCCGCGCGTTCGGAGCTATGCCTGTCCAGACCAGCCTCCATCAG
CCTCAGAGAAGAACAGCTCCTTGAGCCAGGCTTAAACACCTCCAATGGTGATGGCTCTGAGACGGAAAC
CACCTCTGCTATCCTTGCTCCGTCAAAGAACAGGAATTACAGTTTAAAGGCTGACCCGAGAGCTGGAG
GCTGAACGCCAGATCGTAGCCAGCCAGCTGGAGCGATGCAAGCTTGGCTCGGAGACAGGAAGCATGAGCA
GTATCAGTTCAGCAGGAGAGCAGTTTCACTGGCAGACACAAGATGGCCAAAAGATATCGAAGATGAACT
TACAACGGGCCTTGAGCTGGTGGACTCCTGTATCCGCTCTCTGCAGGAGTCAGGCATTCTGGACCCACAG
GATTACTCCACAAGTAAAGGCCTAGCCTGCTCTCCAGAGTGCACCTTACGCTCAATTCTAAACCTGAAG
GGTCTTTCCAGTATCCGGCCAGCTACCATAGCAACCAGACCCTGGCCCTGGGTGACACAGCCCTTCTCA
GCTCCCAGCAGCAGCACGCAAGCCGAGCTGCCGGCCAGAGCTTACGCCAGGGCACGACCCGGCCGCGCG
GGGCACCTGGCGGGCTCCGAGCTGCGCCACCGCCTCCGCTCCGCGGGAACCGTTCCGCGCCAGCCTGG
GCAGCGCCTTCCACCTGCCGACGCGCCGCGCCGCGCGCGCTCTACTACTCAGCTCCACGCTGCC
CGCGCCGCGCGGGGGCTCCCCGTGACCACACGCAAGGCGGCTCACCCACCAAGCTGCAGCGCGGA
GGCTCGGCCCCGAGGGTCCGCTACGCGCGCGCGCGCTCCTCGCCCAAGCAGTCCGCCAGCCGCG
TGGCTAAGTCTACAGCACCAGCTCGCCATCAACATCGTCGTCTCGGCGGCTGTCCCCGATCCG
CGTGACCTCGCCCCACCGTGCAGTCCACCATCTCCTTTCGCCCATCCACCAGCTGAGCTCCACCATC
GGCACCTACGCCACCCTGTCCGCCACCAAGCGCCTGGTCCACGCTCTGAGCAGTACAGCAAGCATTCCG
AGGAGCTGTATGCCACCGCCACCCTCCAGAGCCGGGCGAGCTGGCAGCTGGATCCCGAGCCTCGTATAG
CAGCCAGCATGGGCACCTGGCCCTGAGCTGCGGGCCCTGCAGTCCCAGAGCACCACATAGACCCCATC
TATGAAGACCGTGTCTATCAGAAGCCCCATGAGGAGTCTCAGCCAGAGCCAGGGGGATCCTCTGCCGC
CAGCACATACCGCACCTTCCGACGAGCACAGCCCCGCTCCTCCCTGGTGTGACTCCGTCCTTGCATGCA
GCGCACAGGCAGCAACACGGGCCACAGAATGCCCGCGACCCACCTTCCAGAGGGCCAGCTATGCTGCC



[View online »](#)

GGCCCAGCCTCCAACACGCAGACCCCTACCGACAGCTGCAGTATTGTGCCTCCGTTGACTCTCCGTACA
 GCAAACTCTGGCCCTGCCCTCCCACCCGAAGGCACCTTGGCCAGATCCCCATCCATCGACAGCATTAGAA
 AGACCCAGGGAGTTTGGATGGAGAGACCCGGAGCTGCCTGAAGTGATACAGATGTTACAGCACCAGTTC
 CCTTCAGTCCAGTCCAATGCTGCAGCTTACCTGCAACACCTCTGTTTTGGAGACAATAAAATTAAGGCAG
 AGATAAGGAGACAAGGAGGGATACAGCTCCTGGTGGACCTGCTGGATCACCGAATGACAGAAGTCCACCG
 TAGTGCCTGTGGGGCTCTGAGGAACCTGGTGTATGGGAAGGCCAATGATGATAACAAAATCGCCCTGAAA
 AACTGTGGTGGTATCCCAGCGCTGGTGGAGACTCCTTCGAAAACCACAGACCTGGAGATCCGGGAGCTGG
 TCACAGGAGTCCTTTGGAACCTCTCATCATGTGATGCACTCAAAATGCCAATCATCCAGGACGCCCTGGC
 AGTGTGACCAATGCGGTGATTATCCCTCACTCGGGCTGGGAGAATTCACCTCTTCAGGATGATCGGAAA
 ATACAGCTGCATTATCACAGGTGCTGCGCAACGCCACTGGGTGCCTAAGGAATGTAAGTTCAGCTGGAG
 AGGAGGCCCGCAAGGATGCGGGAGTGTGATGGGCTCACGGATGCCTTGTGTACGTGATCCAGTCTGC
 ACTGGGGAGCAGTGAGATCGATAGCAAGACCGTTGAAAATGTGTGTGCATCTTGAGGAACCTCTCTAC
 CGGCTAGCAGCAGAAACGCTCAGGGACAGCACATGGGCACAGACGAGCTGGACGGGCTGCTCTCGGGG
 AGACCAACGGCAAAGACACAGAGAGTTCTGGGTGCTGGGGCAAGAAGAAGAAAAAGAAATCCCAGGA
 CCAGTGGGATGGAGTAGGACCTTTCAGACTGTGCAGAGCCACAAAAGGGATCCAGATGCTGTGGCAC
 CCGTCCATAGTCAAACCTACCTCACACTGCTCTCTGAGTGTCTCAAACCCAGACAGCTGGAAGGGGCGAG
 CGGGCGCCCTGCAGAACTTGGCTGCAGGGAGCTGGAAGGGCTGGGCTGAGGATGTGGCAGGCATGGCGTA
 TGCCCTACGTTCACTGCCAGAGGGGGCTCCCTGCCTGCCACAGTGGTCCGTGTATATCCGAGCTGTGTG
 CGGAAAGAGAAAGGCCTGCCATTCTTGTGGAGCTCCTCCGAATAGACAATGACCGTGTAGTGTGTGCGAG
 TGGCCACAGCACTTCGGAACATGGCCCTCGATGTGAGAAACAAGGAACTCATTGGCAAGTATGCCATGCG
 AGACCTGGTCCACCGCTTCTGGTGGGAACAACAGCAACAACCTCGGGGAGCAAGGCCATGTCAGATGAC
 ACCGTGACGGCCGTGTGCTGCACCCTGCATGAAGTGATCACCAAGAACATGGAGAATGCCAAGGCCTTAC
 GGGATGCTGGTGGCATCGAGAAGTTGGTCGGCATCTCTAAAAGCAAAGGAGACAAGCACTCTCAAAGGT
 GGTCAAGGCTGCTTCTCAGGTCCTAAACAGCATGTGGCAGTATCGCGATCTGAGGAGTCTCTACAAGAAG
 GATGGATGGTACAATATCACTTTGTAGCCTCATCTTCAACCATCGAGAGGGATCGACAAAAGGCCCTACT
 CCTCTCCCGCACACCCTCCATCTCTCCCGTGCCTGTGTCTCCCAACAACCGCTCAGCAAGTGCCCCAGC
 TTCACCTCGGGAATGATCAGCCTCAAAGAAAGGAAGACGGACTACGAGTCCGCTGGCAACAACGCCACT
 TACCACGGAACAAAGGAGAACACACCTCCAGAAAAGACACCATGACAGCTCAAAACACTGGAGTTTCAA
 CTTTGTACAGGAATTCATACGGTGCGCCCGCTGAAGACATCAAACAGAACAGGTTTCCACACAGCCTGT
 CCCTCAGGAGCCAGCAGGAAAGACTACGAGACCTACCAGCCCTTCCGAATTCACACAGAAATATGAT
 GAGTCCTTCTTTGAGGACCAGGTCCACCACCGCCCTCCAGCCAGCGAGTACACCATGCACCTGGGCCTCA
 AGTCCACTGGCAACTATGTCGACTTCTACTCTGCAGCCCGTCTTACAGTGAACCTGAACATGAAACGAG
 CCACTACCCGGCCTCGCCGACTCCTGGGTG

AGCGGACCGACGCGTACGCGGCCGCTCGAG - GFP Tag - GTTTAA

Protein Sequence: >MG222968 representing NM_008729
 Red=Cloning site Green=Tags(s)

MFARKQSGAAPFGAMPVDPQPPSASEKNSSLSPGLNLSNGDGETETTSAILASVKEQELQFERLTRELE
 AERQIVASQLERCKLGSETGSMSSISSAGEQFHWQTQDGQKIDIEDELTTGLELVDSCIRSLQESGILDPO
 DYSTSERPSLLSQSALQLNSKPEGSFQYPASYHSNQTALGDTAPSQLPARSTQARAAGQSFSGTTGRA
 GHLAGSEPAAPPPPPREPFAPSLGSAFHLPDAPPAALYYSSSTLPAPPRGGSPLTTTQGGSPTKLQRG
 GSAPEGAAYAAPRGSSPKQSPSRLAKSYSTSSPINIVVSSAGLSPIRVTSPTTVQSTISSSPIHQLSSTI
 GTYATLSPTKRLVHASEQYSKHSQELYATLQRPGLAAGSRASYSSQHGHLAPELRALQSPEHHIDPI
 YEDRVYQKPPMRSLSQSQGDPLPPAHTGTFRTSTAPSSPGVDSVPLQRTGSQHGPQAAAAATFQRASYAA
 GPASNYADPYRQLQYCASVDSYKSGPALPPEGLARSPSIDSIQKDPREFGWRPELPEVIQMLQHQP
 PSVQSNAAAYLQHLFCFQDNKIKAEIRRQGGIQLLDLLDHRMTEVHRSACGALRNLVYGKANDDNKIALK
 NCGGIPALVRLRKTDDLEIRELVTGVLWNLSSCDALKMPIIQDALAVLNAVIIPHSGWENSPLQDDRK
 IQLHSSQVLRNATGCLRNVSAGEEARRRMRECDGLTDALLYVIQSALGSSEIDSKTVENCVCILRNL
 SYRLAAETSQGHMGTDEL DGLLCGETNGKDESSGCWGGKKKKKKKSDQDQWGVGGLPDCAEPPKGIQMLWH
 PSIVKPYLTLLSECSNPDTLEGAAGALQNL AAGSWKGAEDVAGMAYALRSLPEGAPCLPQWSVYIRAAV
 RKEKGLPILVELLRIDNDRVCAVATALRNMALDVRNKEFIGKYAMRDLVHRLPGNNSNNSGSKAMSDD
 TVTAVCCTLHEVITKNMENAKALRDAGGIEKLVGISKSKGDKHSPKVKAASQVLSNMWQYRDLRSLYKK
 DGWSQYHFVASSSTIERDRQRPYSSSRTPSISPVRVSPNNRSASAPSPREMI SLKERKTDYESAGNNAT
 YHGTKGEHTSRKDTMTAQTGVSTLYRNSYGAPAEIKQNVSTQPVPEPSRKDYETYPFPNSTRNYD
 ESFFEDQVHRRPASEYTMHLGLKSTGNYVDFYSAARPYSELNYETSHYPASPDSWV

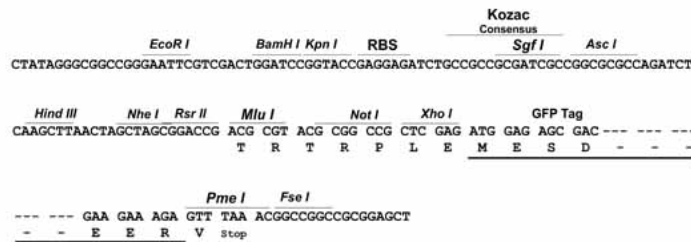
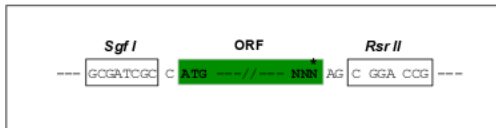
SGPTRRRLE - GFP Tag - V

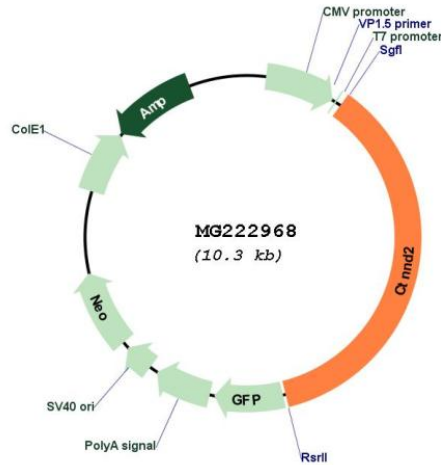
Restriction Sites:

SgfI-RsrII

Cloning Scheme:

Cloning sites used for ORF Shuttling:



Plasmid Map:


ACCN: NM_008729

ORF Size: 3738 bp

OTI Disclaimer: The molecular sequence of this clone aligns with the gene accession number as a point of reference only. However, individual transcript sequences of the same gene can differ through naturally occurring variations (e.g. polymorphisms), each with its own valid existence. This clone is substantially in agreement with the reference, but a complete review of all prevailing variants is recommended prior to use. [More info](#)

OTI Annotation: This clone was engineered to express the complete ORF with an expression tag. Expression varies depending on the nature of the gene.

Components: The ORF clone is ion-exchange column purified and shipped in a 2D barcoded Matrix tube containing 10ug of transfection-ready, dried plasmid DNA (reconstitute with 100 ul of water).

- Reconstitution Method:**
1. Centrifuge at 5,000xg for 5min.
 2. Carefully open the tube and add 100ul of sterile water to dissolve the DNA.
 3. Close the tube and incubate for 10 minutes at room temperature.
 4. Briefly vortex the tube and then do a quick spin (less than 5000xg) to concentrate the liquid at the bottom.
 5. Store the suspended plasmid at -20°C. The DNA is stable for at least one year from date of shipping when stored at -20°C.

RefSeq: [NM_008729.2](#), [NP_032755.2](#)

RefSeq Size: 5959 bp

RefSeq ORF: 3741 bp

Locus ID: 18163

UniProt ID: [O35927](#)

Cytogenetics: 15 B2

Gene Summary: Has a critical role in neuronal development, particularly in the formation and/or maintenance of dendritic spines and synapses (PubMed:17993462) (PubMed:25807484). Involved in the regulation of canonical Wnt signaling (By similarity). It probably acts on beta-catenin turnover, facilitating beta-catenin interaction with GSK3B, phosphorylation, ubiquitination and degradation (PubMed:20623542). May be involved in neuronal cell adhesion and tissue morphogenesis and integrity by regulating adhesion molecules. Functions as a transcriptional activator when bound to ZBTB33 (PubMed:15282317).[UniProtKB/Swiss-Prot Function]