

## Product datasheet for **MG222965**

### **Glp1r (NM\_021332) Mouse Tagged ORF Clone**

#### **Product data:**

Product Type:	Expression Plasmids
Product Name:	Glp1r (NM_021332) Mouse Tagged ORF Clone
Tag:	TurboGFP
Symbol:	Glp1r
Synonyms:	GLP-1R; GLP1Rc
Mammalian Cell Selection:	Neomycin
Vector:	pCMV6-AC-GFP (PS100010)
E. coli Selection:	Ampicillin (100 ug/mL)



[View online »](#)

**ORF Nucleotide Sequence:**

>MG222965 representing NM\_021332  
 Red=Cloning site Blue=ORF Green=Tags(s)

TTTTGTAATACGACTCACTATAGGGCGGCCGGAATTCGTCGACTGGATCCGGTACCGAGGAGATCTGCC  
 GCCCGCATCGCC

ATGGCCAGCACCCCAAGCCTCCTGCGCCTGGCGCTCCTGTGCTCGGGGCGGTGGGCAGGGCCGGCCCC  
 GCCTCAGGGTACCACGGTGTCCCTCTCAGAGACGGTGCAGAAATGGAGAGAATACCGGGCGCAGTGCCA  
 GCATTTCTCACGGAAGCGCCACTCCTGGCCACAGGCCTTTCTGCAACCGGACCTTTGATGACTATGCC  
 TGCTGGCCGATGGGCCCCAGGTTCTTCGTGAATGTCAGCTGCCCTGGTACCTGCCCTGGCCAGTA  
 GTGTGCTACAAGGCCATGTGTACCGTTCTGCACAGCTGAGGGTCTCTGGCTACATAAGGACAACTCCAG  
 CCTGCCCTGGAGGACCTGTGGAGTGTGAAGAGTCTAAGCGAGGGGAGAGAACTTTCTGAGGAACAG  
 CTCCTGTCCTGTACATTATCTACACAGTGGGGTACGCACTTTCTTTCTCCGCTTGGTCATCGCTTCAG  
 CCATCCTTGTGGCTTACAGACCTGCACTGCACCAGAACTACATCCACCTGAACCTGTTTGCATCCTT  
 CATCCTCCGAGCACTGTCCGTCTTCATCAAAGATGCTGCCCTCAAGTGGATGTATAGCACGGCTGCCAG  
 CAACACAGTGGGATGGGCTCCTCCTATCAGGACTCTCTAGGCTGCCGACTGGTGTTCCTGCTCATGC  
 AGTACTGCGTGGCAGCCAACTACTACTGTTGCTGGTGGAAAGCGGTGTATCTATACACACTGCTGGCCTT  
 CTCGGTGTTCGGAGCAGCGCATCTTCAAGCTGTATCTGAGCATAGGCTGGGGAGTTCCGCTGCTGTTT  
 GTTATCCCATGGGGATTGTCAAGTATCTATGAGGACGAGGGCTGCTGGACTAGGAACTCCAATATGA  
 ACTACTGGCTCATCATCCGATTGCCATTCTCTTTGCTATCGGCGTCAACTTTCTTATCTTCATCCGTTG  
 CATCTGCATAGTGGTCTCAAACCTGAAGGCTAATCTCATGTGCAAGACTGACATCAAATGCAGGCTTGCC  
 AAGTCCACTGACTCTCATCCCCCTTCTGGGGACACATGAAGTCATCTTTGCCTTTGTGATGGACGAAC  
 ACGCCCCGAGAACCTACGCTTCATCAAGCTGTTACAGAACTCTCCTTCACTTCTCCAGGGCTTGAT  
 GGTGGCTATCCTGTACTGCTTTGTCAACAATGAGAAGGTCCAGATGGAGTTTCGGAAATGCTGGGAGCGC  
 TGGAGGCTGGAGCACTTGAATATCCAGAGAGACTGCAGCATGAAGCCCTCAAGTGTCCCACCAGCAGCG  
 TCAGCAGTGGGGCCACAGTGGGCAGCAGCGTGTACGCAGCCACCTGCCAGAGTTCCTACAGC

ACGCGTACGCGGCCGCTCGAG – GFP Tag – GTTTAA

**Protein Sequence:**

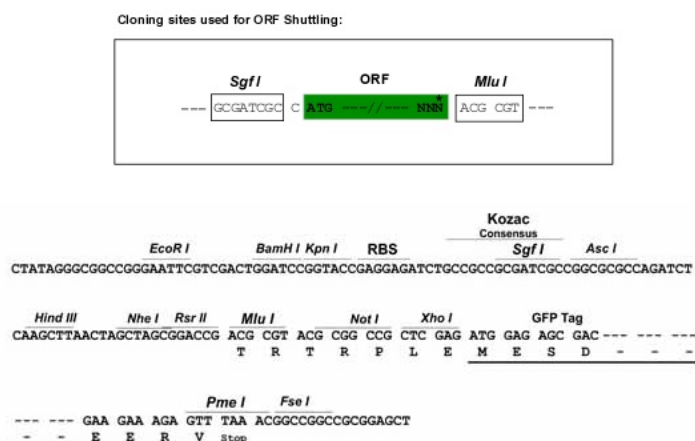
>MG222965 representing NM\_021332  
 Red=Cloning site Green=Tags(s)

MASTPSLLRLALLLGA VGRAGPRPQGTTVSLSETVQKWREYRRQCQHFLTEAPLLATGLFCNRTFDDYA  
 CWPDPGPPGSFVNVSCPWYLPWASSVLQGHVYRFTA EGLWLHKDNSSLPWRDLSECEESKRGERNFPEEQ  
 LLSLYIIYTVGYALSFSALVIASAILVGRHLHCTRNYIHLNLFASFILRALSVFIKDAALKWMYSTAAQ  
 QHQWDGLLSYQDSLGCRLVFLLMQYCAANYWLLVEGVLYTL LAFSVFSEQRIFKLYLSIGWGVPLLF  
 VIPWGI VKYLYEDEGCWTRNSNMNYWLIIRLPILFAIGVNF LIFIRVICIVVSKLKANLMCKTDIKCRLA  
 KSTLTLIPLLGTHEVIFAFVMDEHARGTLRFIKLFTLSF TSFQGLMVAI LYCFVNNEKVQMEFRKCWER  
 WRLEHLNIQRDCSMKPLKPTSSVSSGATVGSVYAAATCQSSYS

TRTRPLE – GFP Tag – V

**Restriction Sites:**

Sgfl-MluI

**Cloning Scheme:**


**ACCN:** NM\_021332

**ORF Size:** 1392 bp

**OTI Disclaimer:** The molecular sequence of this clone aligns with the gene accession number as a point of reference only. However, individual transcript sequences of the same gene can differ through naturally occurring variations (e.g. polymorphisms), each with its own valid existence. This clone is substantially in agreement with the reference, but a complete review of all prevailing variants is recommended prior to use. [More info](#)

**OTI Annotation:** This clone was engineered to express the complete ORF with an expression tag. Expression varies depending on the nature of the gene.

**Components:** The ORF clone is ion-exchange column purified and shipped in a 2D barcoded Matrix tube containing 10ug of transfection-ready, dried plasmid DNA (reconstitute with 100 ul of water).

**Reconstitution Method:**

1. Centrifuge at 5,000xg for 5min.
2. Carefully open the tube and add 100ul of sterile water to dissolve the DNA.
3. Close the tube and incubate for 10 minutes at room temperature.
4. Briefly vortex the tube and then do a quick spin (less than 5000xg) to concentrate the liquid at the bottom.
5. Store the suspended plasmid at -20°C. The DNA is stable for at least one year from date of shipping when stored at -20°C.

**RefSeq:** [NM\\_021332.2](#), [NP\\_067307.2](#)

**RefSeq Size:** 1480 bp

**RefSeq ORF:** 1392 bp

**Locus ID:** 14652

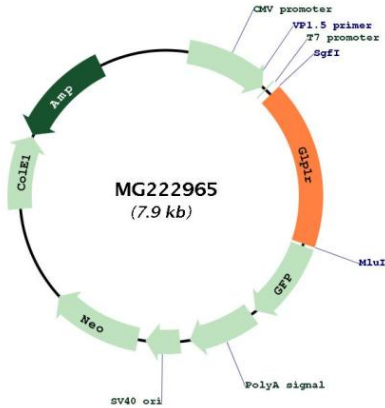
**UniProt ID:** [O35659](#)

**Cytogenetics:** 17 15.8 cM

**Gene Summary:**

G-protein coupled receptor for glucagon-like peptide 1 (GLP-1) (PubMed:9568699). Ligand binding triggers activation of a signaling cascade that leads to the activation of adenylyl cyclase and increased intracellular cAMP levels (By similarity). Plays a role in regulating insulin secretion in response to GLP-1 (PubMed:9568699).[UniProtKB/Swiss-Prot Function]

**Product images:**



Circular map for MG222965