

Product datasheet for **MG222958**

Folr1 (NM_008034) Mouse Tagged ORF Clone

Product data:

Product Type: Expression Plasmids
Product Name: Folr1 (NM_008034) Mouse Tagged ORF Clone
Tag: TurboGFP
Symbol: Folr1
Synonyms: FBP1; Folbp-1; Folbp1
Mammalian Cell Selection: Neomycin
Vector: pCMV6-AC-GFP (PS100010)
E. coli Selection: Ampicillin (100 ug/mL)
ORF Nucleotide Sequence: >MG222958 representing NM_008034
Red=Cloning site Blue=ORF Green=Tags(s)

TTTTGTAATACGACTCACTATAGGGCGCCGGAATTCGTCGACTGGATCCGGTACCGAGGAGATCTGCC
GCC**CGATCGCC**

ATGGCTCACCTGATGACTGTGCAGTTGTTGCTCCTGGTATGTGGATGGCCGAATGTGCTCAGTCCAGAG
CTACTCGGGCCAGGACTGAACTTCTCAATGTCTGCATGGATGCCAAACACCACAAAGAAAACCGGGCCC
TGAGGACAATTTACACGACCAGTGCAGCCCTGGAAGACGAATTCCTGCTGTTCCACGAACACAAGCCAG
GAAGCACATAAGGACATTTCTACCTGTACCGTTCAACTGGAACCACTGCGGAATATGACATCGGAAT
GCAAACGGCACTTTATCCAAGACACCTGCCTCTATGAGTGTCCCGAATTTGGGACCCTGGATCCAGCA
GGTGGACCAGAGCTGGCGCAAAGAGCGGATCCTTGATGTTCCCTGTGCAAAGAGGACTGTGAGCAGTGG
TGGGAGGACTGCCAGAGCTCTTTTACCTGCAAGAGCAATTGGCACAAGGGATGGAATGGTCTCGGGGC
ATAACGAGTGTCTGTGGGAGCCTCCTGCCATCCCTTCACCTTCTACTTCCCACATCTGCTGCTGTG
TGAGGAAATCTGGAGTCACTCCTACAAGCTCAGCAACTACAGTCGAGGGAGCGGCCGCTGCATTCAGATG
TGGTTCGACCCAGCCAGGGCAACCCCAACGAGGAAGTGGCGAGGTTCTATGCCGAGGCCATGAGTGGAG
CTGGGTTTCATGGGACCTGGCCACTCTGTGCAGCCTGTCCTTAGTGCTGCTCTGGGTGATCAGC

ACGCGTACGCGGCCGCTCGAG - GFP Tag - GTTTAA



[View online »](#)

Protein Sequence: >MG222958 representing NM_008034
Red=Cloning site Green=Tags(s)

MAHLMTVQLLLL VMWMAECAQSRATRARTELLNVCMDAKHHKEKPGPEDNLHDQCSPWKTNSCCSTNTSQ
 EAHKDISYLYRFNWNHCGTMTSECKRHF IQDTCLYECSPNLGPWIQQVDQSWRKERILDVPLCKEDCQQW
 WEDCQSSF TCKSNWHKGNWSSGHNECPVGASCHPFTFYFPTSAALCEEIWSHSYKLSNYSRGSGRCIQM
 WFDPAQGNPNEEVARFYAEAMSGAGFHGTWPLLCSLSLVLLWVIS

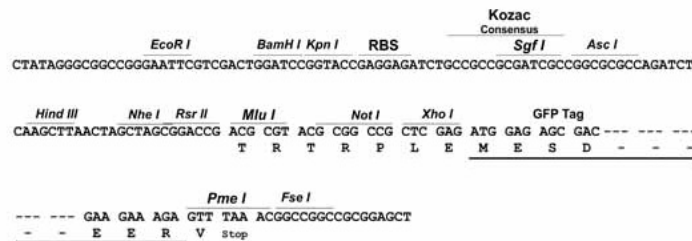
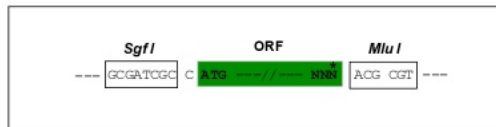
TRTRPLE - GFP Tag - V

Chromatograms: https://cdn.origene.com/chromatograms/ja2672_f02.zip

Restriction Sites: SgfI-MluI

Cloning Scheme:

Cloning sites used for ORF Shutting:



ACCN: NM_008034

ORF Size: 765 bp

OTI Disclaimer: Due to the inherent nature of this plasmid, standard methods to replicate additional amounts of DNA in E. coli are highly likely to result in mutations and/or rearrangements. Therefore, OriGene does not guarantee the capability to replicate this plasmid DNA. Additional amounts of DNA can be purchased from OriGene with batch-specific, full-sequence verification at a reduced cost. Please contact our customer care team at custsupport@origene.com or by calling 301.340.3188 option 3 for pricing and delivery.

The molecular sequence of this clone aligns with the gene accession number as a point of reference only. However, individual transcript sequences of the same gene can differ through naturally occurring variations (e.g. polymorphisms), each with its own valid existence. This clone is substantially in agreement with the reference, but a complete review of all prevailing variants is recommended prior to use. [More info](#)

OTI Annotation: This clone was engineered to express the complete ORF with an expression tag. Expression varies depending on the nature of the gene.

Components: The ORF clone is ion-exchange column purified and shipped in a 2D barcoded Matrix tube containing 10ug of transfection-ready, dried plasmid DNA (reconstitute with 100 ul of water).

Reconstitution Method:

1. Centrifuge at 5,000xg for 5min.
2. Carefully open the tube and add 100ul of sterile water to dissolve the DNA.
3. Close the tube and incubate for 10 minutes at room temperature.
4. Briefly vortex the tube and then do a quick spin (less than 5000xg) to concentrate the liquid at the bottom.
5. Store the suspended plasmid at -20°C. The DNA is stable for at least one year from date of shipping when stored at -20°C.

RefSeq: [NM_008034.3](#)

RefSeq Size: 1303 bp

RefSeq ORF: 768 bp

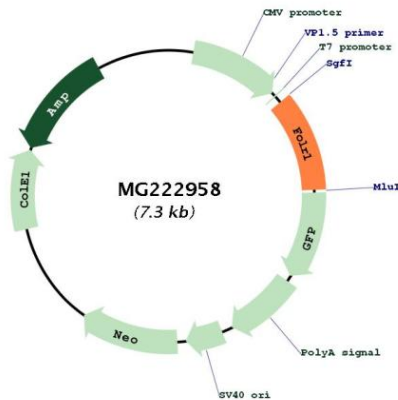
Locus ID: 14275

UniProt ID: [P35846](#)

Cytogenetics: 7 E2

Gene Summary: Binds to folate and reduced folic acid derivatives and mediates delivery of 5-methyltetrahydrofolate and folate analogs into the interior of cells. Has high affinity for folate and folic acid analogs at neutral pH. Exposure to slightly acidic pH after receptor endocytosis triggers a conformation change that strongly reduces its affinity for folates and mediates their release. Required for normal embryonic development and normal cell proliferation. Required for renal folate reabsorption.[UniProtKB/Swiss-Prot Function]

Product images:



Circular map for MG222958