

## Product datasheet for **MG222951**

### **E2f7 (NM\_178609) Mouse Tagged ORF Clone**

#### **Product data:**

Product Type:	Expression Plasmids
Product Name:	E2f7 (NM_178609) Mouse Tagged ORF Clone
Tag:	TurboGFP
Symbol:	E2f7
Synonyms:	A630014C11Rik; D10Ertd739e; E2F-7
Mammalian Cell Selection:	Neomycin
Vector:	pCMV6-AC-GFP (PS100010)
E. coli Selection:	Ampicillin (100 ug/mL)



[View online »](#)

**ORF Nucleotide Sequence:**

>MG222951 representing NM\_178609  
 Red=Cloning site Blue=ORF Green=Tags(s)

TTTTGTAATACGACTCACTATAGGGCGGCCGGGAATTCGTCGACTGGATCCGGTACCGAGGAGATCTGCC  
 GCC**CGGATCGCC**

ATGGAGGTGAATTGTTTAACTAAAAGACTTGATCAGCCCCAGGCAGACCAGACTAGATTTTGCCATTG  
 AAGATGCAGAGAACGCACAAAAGGAAAATATTTTGTGACCGATCAAGGATGACCCCAAAGACACCGAT  
 GAAGAACGAGCCGATCGACCTGTCAAAGCAAAGAATCTTACCCACAGACGAAACCCATTACTCCAGTA  
 AAGCCGGTGCACAGGCAGCCGAGGTGGAGCCCTGGACACCCACAGCAACCTGAAGATGCTCATCAGCG  
 CCGCCAGCCAGACATAAGAGACCGGGAGAAGAAAAGGAGCTGTTAGACCCATTGAGAATAAGGAGGA  
 TGCGTTCGTGAATCCCTGCAGCTTGACGTGGCCGGTGCAGCGCTGTGGATGAGTATGAGAAGCAAAGG  
 CCAAGCAGGAAACAGAAGAGCTTGGGGCTGCTGTCCAGAAGTTCTAGCTCGCTATCCGAGCTACCCCT  
 TGTCAACGGAGAAAACCCATCTCCCTAGATGAGGTCCCGTCACTCTCGGCGTGGAAAGGAGACGCAT  
 CTATGACATCGTAAACGTGCTGGAGTGCATCTGGTACGCCGGTGGCTAAGAATCAGTATGGTTGG  
 CACGGTCCGCACAGCCTCCCAAACCCCTGAGGACCTACAGAGACTGGGAGAGGAACAGAAATACGAGG  
 AGCAGATGGCCTGCCTCCAGCAGAAGGAGCTGGACCTGATGGGGTATAGTTTCGGAGAACCGAGGAAAGA  
 CGGGTCTCCGGACCCCGAGATCCACTCTACTTGATTTTCCGAAGCCGACTACCCCTCTTCATCTGCA  
 AACAGTCGAAAAGATAAATCTTTAAGAATTATGAGCCAGAAGTTTGTGATGCTGTTCCCTCGTCTCCAAA  
 CCAAGATTGTCACCCTGGATGTAGCTGCCAAAATCCTCATAGAAGAAAGCAAGATACCCCGACACAG  
 CAAATTCAAAACAAGGTACGGAGGCTCTATGACATAGCCAATGTTCTGACCAGCCTGGCTCTGATAAAG  
 AAAGTTCACGTAACAGAAGAGCGAGGCCGGAACACAGCCTTCAAGTGGATCGGCCCTGTGGACTTCACT  
 CCATTGATGAAGAACTGTTGGAGTCTCTGCATCCATCTTACCAGAATTGAAGAAGGACATACGGCCA  
 GATCCGAGTGTGTGCAAAGAGAGGCTGGTGGCGTACGGTTCCTTTAACACGGTTCACACGCTCGAGAAG  
 ATACAGAGAAAAGTGAGCTCAGAACCACAGCCACAGGGAGAAGACAAGGGTCAAGCCTATCCCTGG  
 AAATTGGAAGTCTGGCGCCATCTACAGACAGAAAGTAGAAGATAATTTCGAGGAGGAAGCCTTTGTGAG  
 TAACACAGCAGTGCCTCCAGCAAGCATCTTGGACCCCGCCCTCTCCATGGACTCTGAATACTGTGCAAG  
 CCTTTAGCCAGCCAGTATTTTCTGTTGCTCAAACAGATTTGCCGGCCTTCTCTGCGCAGAATGGTCCAA  
 GCGGACAAGTAGGTGTCCTTCTGTCAGCCTCCGACACAGAGAACTTAAAGCCAGCTCTGCTCGC  
 CGGCCAGCCCTGGTCTACGTGCCCTCCACCAACTCTTCATGCTGTACGGGAGTGTGCAGGAGGGACTG  
 TCCCCAGAGTCAAGGTCAAGGAAGATGGTGGTGGCTCCGATGTCCAGCTGACCTGTGAGTACACCCCT  
 CTGCTCAGAAGCCCTGTGTGAGGAGAGAGATCCTCAGGAGGAGGAGGACGAGCCCGCCATGAAAAGACA  
 AAGTCAGGAATTTGAAGACAGCCCTTATCCCTAGTTATGCCAAAGAAACCCCTCAAGTTCACAGACCTT  
 GCCTGTCTGTGACCATGGGAAACGGGAGCTCTCCACCCCTGGAAGACGCCTGTGTTAAGGGTCACTCC  
 CTGCTGCAGAGAAGTTACAGGAAAGGCTGCCCAAACCTGCTATGTTGCTTCTGAGTGTGAAACCCGGC  
 AAGAAATCCAGACACTGAAAAGCCTTCCAACGAAAACGAGATCACCAAAGACCCCTCGCTGATGCAGTAC  
 CTGTATGTGAGTCTCCCGCAGGGTTAAATGGTTTTAACATGGTTTTACCAGGCACCCAGACCCCCACA  
 CCGTGGCACCCCTCCCGGCTCAGCTGCCATCCTTCGGCGTACCCTGCATGTTCTGCAATCCCGAGCCT  
 GGGCCCTTTTCCAGTCTCTATTCTCCGCAATACCCGGGCCATTTCTTCAGCCCCCGGCACTCACCCA  
 AACCCCGGACCCATGAACTTCGGCTTGTCCACCCCTGGCATCTGCTTCTACCTTCTCATCAGCCCGCAG  
 CCATGGTCAATCAAAGCCATCCACCCTCCCTGTACAGACCCTCAGCTTCGCTGTGAGCCCTACTCAA  
 CCTGAACCCCGTGTGACAGGCTCACACGGCGTATCCACCCGAGTCCCTGTTACGTGAGACATCCG  
 GTATCGATGGTAAAGGCAGAGCAGTCCCCTGCACCGGCGACTCCAAGAGCATCAAACGGAGACATCGGG  
 AGACGTTCTTCAAGACTCCCGCAGCCTCGGCGATCCGGTCTTTAGAAGAAAAGAAAGGAACCAATCAAG  
 AAACACTAGCTCAGCCAGAGGAGACTAGAATCTCTAGCAGCGGCCTGAC

**ACGCGTACGCGGCCGCTCGAG** – GFP Tag – GTTTAA

**Protein Sequence:** >MG222951 representing NM\_178609  
 Red=Cloning site Green=Tags(s)

```

MEVNCLTLKDLISPRQTRLDFAIEDAENAQKENIFVDRSRMTPKTPMKNEPIDLSKQRIFTPDRNPITPV
KPVDRQPQVEPWTPTANLKMLISAASPDIRDREKKELFRPIENKEDAFVNSLQLDVAGDGAVDEYEKQR
PSRKQKSLGLLCQKFLARYPSYPLSTEKTTISLDEVAVSLGVERRRIYDINVLESLSLHLSRVAKNQYGW
HGRHSLPKTLRTLQRLGEEQKYEEQMAQLQKELDLMGYRFGERRKDGSPDRDPLLLDFSEADYPSSSA
NSRKDKSLRIMSQKFMVLFVSKTKIVTLDVAAKILIEESQDTPDHSKFKTKVRRLYDIANVLTSLALIK
KVHVTEERGRKPAFKWIGPVDVSSIDEELLDVASILPELKKEAYGQIRVCAKERLVRYGSFNTVHTSEK
IQRKVSSESPSPQGERQGSAYSLEIGSLAAIYRQKVEDNSQEEAFVSNTAVPPASILDPAISMDSEYCVK
PLAQPVFSVAQTDLPAFSAQNGPSGQVGVVPSAASDTENLKALLAGQPLVYVPSTQLFMLYGSVQEGL
SPESRSEEDGGSDVPADLSVTPSAQKRLCEERDPQEEDEPAMKRSQEFEDSPLSLVMPKKPSSSTDL
ACPVTMGNGSSPLEDACVKGQLPAAEEVTGKAAPNCYVASECGNPARNPDETEKPSNENEITKDPQLMQY
LYVQSPAGLNGFNMLPGTQTPHTVAPSPAQLPSFGVPCMFLLQSPGLGPFVLYSPAIPGPSSAPGTHP
NPGPMNFGSLTLASASHLLISPAAMVNPKPSTLPCTDPQLRCQPSLNLNPVMPGSHGVIHPESPCYVRHP
VSMVKAEQSPAPATPKSIQRRHRETFFKTPGSLGDPVFRRKERNQSRNTSSAQRRLIEISSSGPD
  
```

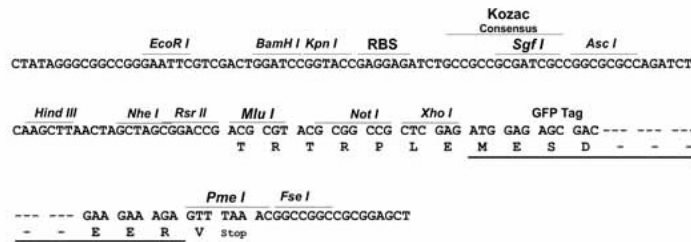
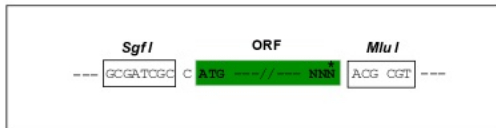
TRTRPLE - GFP Tag - V

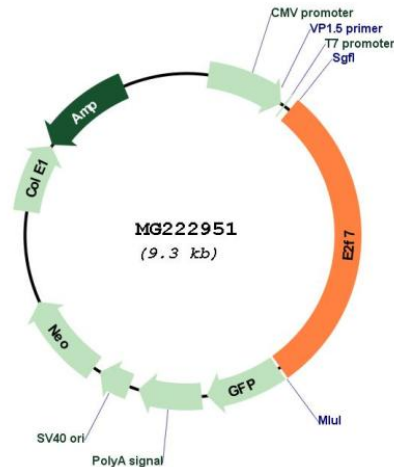
**Restriction Sites:**

SgfI-MluI

**Cloning Scheme:**

Cloning sites used for ORF Shuttling:



**Plasmid Map:**


<b>ACCN:</b>	NM_178609
<b>ORF Size:</b>	2712 bp
<b>OTI Disclaimer:</b>	The molecular sequence of this clone aligns with the gene accession number as a point of reference only. However, individual transcript sequences of the same gene can differ through naturally occurring variations (e.g. polymorphisms), each with its own valid existence. This clone is substantially in agreement with the reference, but a complete review of all prevailing variants is recommended prior to use. <a href="#">More info</a>
<b>OTI Annotation:</b>	This clone was engineered to express the complete ORF with an expression tag. Expression varies depending on the nature of the gene.
<b>Components:</b>	The ORF clone is ion-exchange column purified and shipped in a 2D barcoded Matrix tube containing 10ug of transfection-ready, dried plasmid DNA (reconstitute with 100 ul of water).
<b>Reconstitution Method:</b>	<ol style="list-style-type: none"> <li>1. Centrifuge at 5,000xg for 5min.</li> <li>2. Carefully open the tube and add 100ul of sterile water to dissolve the DNA.</li> <li>3. Close the tube and incubate for 10 minutes at room temperature.</li> <li>4. Briefly vortex the tube and then do a quick spin (less than 5000xg) to concentrate the liquid at the bottom.</li> <li>5. Store the suspended plasmid at -20°C. The DNA is stable for at least one year from date of shipping when stored at -20°C.</li> </ol>
<b>RefSeq:</b>	<a href="#">NM_178609.4</a> , <a href="#">NP_848724.2</a>
<b>RefSeq Size:</b>	5476 bp
<b>RefSeq ORF:</b>	2715 bp
<b>Locus ID:</b>	52679
<b>UniProt ID:</b>	<a href="#">Q6S7F2</a>
<b>Cytogenetics:</b>	10 57.74 cM

**Gene Summary:**

Atypical E2F transcription factor that participates in various processes such as angiogenesis, polyploidization of specialized cells and DNA damage response. Mainly acts as a transcription repressor that binds DNA independently of DP proteins and specifically recognizes the E2 recognition site 5'-TTTC[CG]CGC-3'. Directly represses transcription of classical E2F transcription factors such as E2F1. Acts as a regulator of S-phase by recognizing and binding the E2-related site 5'-TTCCCGCC-3' and mediating repression of G1/S-regulated genes. Plays a key role in polyploidization of cells in placenta and liver by regulating the endocycle, probably by repressing genes promoting cytokinesis and antagonizing action of classical E2F proteins (E2F1, E2F2 and/or E2F3). Required for placental development by promoting polyploidization of trophoblast giant cells. Also involved in DNA damage response: up-regulated by p53/TP53 following genotoxic stress and acts as a downstream effector of p53/TP53-dependent repression by mediating repression of indirect p53/TP53 target genes involved in DNA replication. Acts as a promoter of sprouting angiogenesis, possibly by acting as a transcription activator: associates with HIF1A, recognizes and binds the VEGFA promoter, which is different from canonical E2 recognition site, and activates expression of the VEGFA gene. Acts as a negative regulator of keratinocyte differentiation.[UniProtKB/Swiss-Prot Function]