

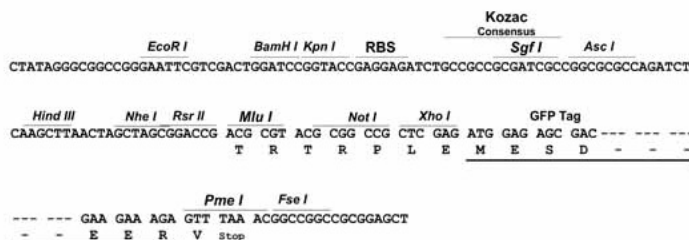
## Product datasheet for MG222931

### Mrgpra1 (NM\_153095) Mouse Tagged ORF Clone

#### Product data:

Product Type:	Expression Plasmids
Product Name:	Mrgpra1 (NM_153095) Mouse Tagged ORF Clone
Tag:	TurboGFP
Symbol:	Mrgpra1
Synonyms:	MrgA1
Mammalian Cell Selection:	Neomycin
Vector:	pCMV6-AC-GFP (PS100010)
E. coli Selection:	Ampicillin (100 ug/mL)
Restriction Sites:	SgfI-MluI
Cloning Scheme:	

Cloning sites used for ORF Shuttling:



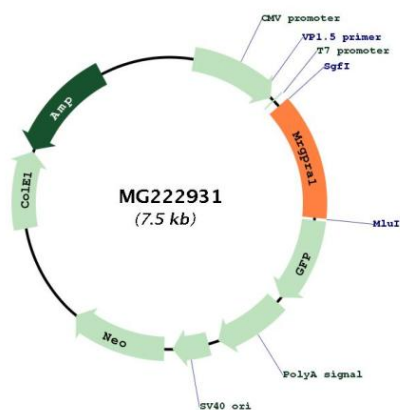
ACCN:	NM_153095
ORF Size:	993 bp



[View online »](#)

<b>OTI Disclaimer:</b>	The molecular sequence of this clone aligns with the gene accession number as a point of reference only. However, individual transcript sequences of the same gene can differ through naturally occurring variations (e.g. polymorphisms), each with its own valid existence. This clone is substantially in agreement with the reference, but a complete review of all prevailing variants is recommended prior to use. <a href="#">More info</a>
<b>OTI Annotation:</b>	This clone was engineered to express the complete ORF with an expression tag. Expression varies depending on the nature of the gene.
<b>Components:</b>	The ORF clone is ion-exchange column purified and shipped in a 2D barcoded Matrix tube containing 10ug of transfection-ready, dried plasmid DNA (reconstitute with 100 ul of water).
<b>Reconstitution Method:</b>	<ol style="list-style-type: none"> <li>1. Centrifuge at 5,000xg for 5min.</li> <li>2. Carefully open the tube and add 100ul of sterile water to dissolve the DNA.</li> <li>3. Close the tube and incubate for 10 minutes at room temperature.</li> <li>4. Briefly vortex the tube and then do a quick spin (less than 5000xg) to concentrate the liquid at the bottom.</li> <li>5. Store the suspended plasmid at -20°C. The DNA is stable for at least one year from date of shipping when stored at -20°C.</li> </ol>
<b>Note:</b>	Plasmids are not sterile. For experiments where strict sterility is required, filtration with 0.22um filter is required.
<b>RefSeq:</b>	<a href="#">NM_153095.2</a> , <a href="#">NP_694735.2</a>
<b>RefSeq Size:</b>	1088 bp
<b>RefSeq ORF:</b>	996 bp
<b>Locus ID:</b>	233221
<b>UniProt ID:</b>	<a href="#">Q91WW5</a>
<b>Cytogenetics:</b>	7 B3
<b>Gene Summary:</b>	Orphan receptor activated by a subset of RFamide-family neuropeptides such as FLRF-amide and FMRF-amide. Mediates its action by association with G proteins that activate a phosphatidylinositol-calcium second messenger system. Its effect is mediated by G(q) and G(11) proteins. May regulate the function of nociceptive neurons by modulation of pain perception.[UniProtKB/Swiss-Prot Function]

## Product images:



Circular map for MG222931