

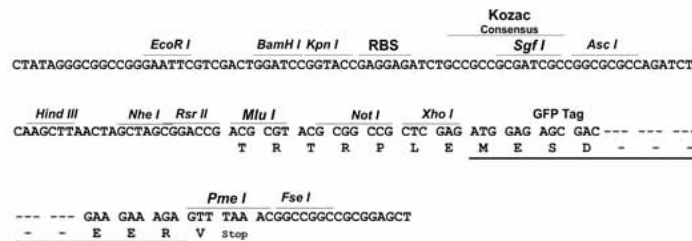
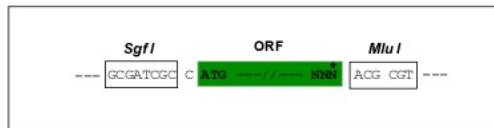
Product datasheet for **MG222924**

Psen2 (NM_011183) Mouse Tagged ORF Clone

Product data:

Product Type:	Expression Plasmids
Product Name:	Psen2 (NM_011183) Mouse Tagged ORF Clone
Tag:	TurboGFP
Symbol:	Psen2
Synonyms:	Ad4; Ad4h; ALG; ALG-3; Alg3; P; PS; PS-2; PS2; Psnl2; STM2
Mammalian Cell Selection:	Neomycin
Vector:	pCMV6-AC-GFP (PS100010)
E. coli Selection:	Ampicillin (100 ug/mL)
Restriction Sites:	SgfI-MluI
Cloning Scheme:	

Cloning sites used for ORF Shuttling:



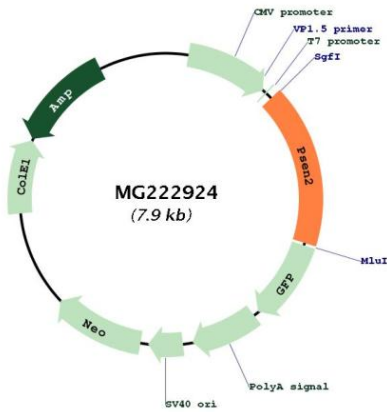
ACCN:	NM_011183
ORF Size:	1344 bp



[View online »](#)

OTI Disclaimer:	The molecular sequence of this clone aligns with the gene accession number as a point of reference only. However, individual transcript sequences of the same gene can differ through naturally occurring variations (e.g. polymorphisms), each with its own valid existence. This clone is substantially in agreement with the reference, but a complete review of all prevailing variants is recommended prior to use. More info
OTI Annotation:	This clone was engineered to express the complete ORF with an expression tag. Expression varies depending on the nature of the gene.
Components:	The ORF clone is ion-exchange column purified and shipped in a 2D barcoded Matrix tube containing 10ug of transfection-ready, dried plasmid DNA (reconstitute with 100 ul of water).
Reconstitution Method:	<ol style="list-style-type: none"> 1. Centrifuge at 5,000xg for 5min. 2. Carefully open the tube and add 100ul of sterile water to dissolve the DNA. 3. Close the tube and incubate for 10 minutes at room temperature. 4. Briefly vortex the tube and then do a quick spin (less than 5000xg) to concentrate the liquid at the bottom. 5. Store the suspended plasmid at -20°C. The DNA is stable for at least one year from date of shipping when stored at -20°C.
RefSeq:	NM_011183.3
RefSeq Size:	1991 bp
RefSeq ORF:	1347 bp
Locus ID:	19165
UniProt ID:	Q61144
Cytogenetics:	1 84.19 cM
Gene Summary:	<p>This gene encodes a member of the presenilin family. Presenilins are catalytic components of the multi-subunit gamma-secretase complex, which mediates critical cellular processes through cleavage of type I transmembrane proteins including Notch receptors and the amyloid precursor protein. The encoded protein contains eight transmembrane domains and is localized to the endoplasmic reticulum, where it may play a role in calcium homeostasis. Following assembly of the gamma-secretase complex, the encoded protein is cleaved into N- and C-terminal fragments and the activated complex is released from the endoplasmic reticulum. Inactivation of this gene results in impaired synaptic function in a mouse model for Alzheimer's disease. Alternatively spliced transcript variants have been observed for this gene. [provided by RefSeq, Apr 2011]</p>

Product images:



Circular map for MG222924