

Product datasheet for **MG222917**

R3hdm1 (NM_181750) Mouse Tagged ORF Clone

Product data:

Product Type:	Expression Plasmids
Product Name:	R3hdm1 (NM_181750) Mouse Tagged ORF Clone
Tag:	TurboGFP
Symbol:	R3hdm1
Synonyms:	R3hdm
Mammalian Cell Selection:	Neomycin
Vector:	pCMV6-AC-GFP (PS100010)
E. coli Selection:	Ampicillin (100 ug/mL)
ORF Nucleotide Sequence:	>MG222917 representing NM_181750 Red=Cloning site Blue=ORF Green=Tags(s)

TTTTGTAATACGACTCACTATAGGGCGGCCGGAATTCGTCGACTGGATCCGGTACCGAGGAGATCTGCC
GCC**CGATCGCC**

ATGAGGATGTCTGATATTGTTATTATAAAAGATGAACTGAAACAATGAAGGATTTGGAGGCAGAAATGA
GAGATACAACCAGAGTTGAAAATCTTATCAAATCAGAAAATATGGGAAGATTTCCGGCAGAGAAGAATGA
ACATTGTATTGACAACAATATTGATTTGCAGCGGCCCGCAGTCATTTGGACAGACAGGAAAAAGGTCT
AAGTCAAGCTCAAAGTTAAAGCTAGTTCGGAGCCTTGCAGTATGTGAAGAATCTCCACCACCCCTGCAG
CAGAGATATCACAGGAGACCCAGGAGAAAATTCAGATACAGTTAACACAATCATTGAAAAAGAGGAAAA
GCCCTCAAAGATGAAACAGATAAAGAAAAAGCCAGTGATAAGTTACCCAGAAAAATGTTATCAAGAGAT
TCCAGCCAAGAATACACTGATTCAACTGGCATAGATCTACATGAATTTTTAGTAAATACATTAATAAACA
ATCCCAGGGACAGAATGATGCTGCTGAAATTTGGAACAAGAAATTTAGATTTTATTGGTAATAATGAGTC
CCCACGTAAGAAGTTTCCCCGATGACATCTTACCACAGGATGCTGTTACACAGAGTGGCTGCCTACTTT
GGATTAGACCACAATGTTGATCAGAGTGGGAAGTCTGTCAAGTGAACAAAATAGCAACACAAGAATAC
CTGATCAGAAATTTAATGAACATATAAAGGATGATAGAGGTGAAGACTTTCAGAAACGATACATCCTTAA
GAGAGATAACTCTAGCTTTGACAAAGATGATAGCCAGATGAGAATACGTTTGAAGATGACAGAAGAAGC
AAATCTATAGAAGAAAGAGAAGAAGAAATACCAGAGAGCTAGAGACCGAATATTTTCCCAAGATTCCTGT
GTTCCCAAGAAAATACATTATTGACAAAAGAATCCAAGATGAGGACACTATTGGTACCCAGCAGAGGCG
CCAGATATTTAGAGTTAATAAAGATGCTTCAGGCCGATCGACAAAACAGCCATCAGAGCAGCACTGAAAAT
GAGTTGAAATACTCAGAGCCACGACCCTGGAGCAGCACCATTGACAGAGCTCCCTCAGAAACCTGAAAC
CCGCTGTACCAAAGCCAGCAGCTTTAGCGGAATCTCAGTCTGACAAGAGGTGATAGCTCTGGAAGCAG
CAAAAGCATAGGCAGGCTTTCAAAAACAGGATCTGAGTCTTCAGGTAGTGTAGGGTCTCTACAGGCTCT
CTTTCTCACACCAGCAGCCTCTCCAGGTTAGCTCTTAGCCAGTCTTCTCATGGCGCACCTGTCTATCT
ACCCGGCAGCCAGCAATCACAGTCTCTTTCTTTGATGGTGGCCTCAGTGGTCAAGGTGCATCTCTAG
CACTAGCTTCTTTGCTCCCTTGAAGCAACTGGCATACCACCTGGCAGTATTCTGATCAACCCACAA



ACAGGTCAGCCCTTCTTAAACCCAGATGGAAGTCCAGTTGTGTACAATCCTCCTATGACTCAACAGCCAG
 TTCGAACCCAAGTGCCTGGTCTCCACAGCCACCTCTGCCACCCACCACCTCAGCAGCCAGCAGCCAG
 TCACATGTTCTCACAGCCTGTTGGTCTCTGCAGTCTCTTCTCAGCCTGTTTCAAGTCTCCAGCCCC
 TACCCATCCCCGCTCTGCCAGTCTCACCACCCAGCAGTACTCCGTGGATAACCTTGGCGCTCAGTTCA
 GCCATATGAGTCTTGCCCGCCAGCCATCAGTGTGGTTCTGACCCTCATGCCACCATGTTCCAGTCCAC
 TGTTGACTACAGTCTCCACAGCAGTCTGGTTACATCGTGACGACAGCACCTCCACATCCGCCACCACCA
 CCTCCACCACCTCCCCCTCCTTCCCTACCACCTGGGAGTCACTCCCACTGCCAGTCTTCTCTGCCT
 CTGGGCATCCTGTCCAGCCAGCCTGTGCTCCAGCAGCAGGGGTTTCTTCTCAGCCCTCACCACAGATGCC
 AGCCTGTTACTGTGCTCCAGGCCACTATCACTCCAGCCAACTCAGTACCGCCCTATCCCTTCTGTCCAT
 CACAGTTCACACCTAAACCAACCACTGCCACAGCCTGCACAGCACACAGTTATCAAGTTATGCCAAACC
 AGCAGCAAACTACCAAGGAATAGTTGGAGTTCAGTACCAGCAGAGTCAAGCCTCATGGGAGGCCAGCC
 AAACAGCACTGGACCTCATATCCAAGGAGTGGTATCCCTACCCTCAGTGCATCATATCAGTTTCA
 CTGCCTCAAGGTTCTCAAGGAATTGCCATCAGACTTATCAACAGCCTGTTGTGTCCCTAATCAGTCTA
 ATCAAGGATCTCTGCCACAACAGGAATGCCAGTCTATTACAGTGTATTCCACCTGGCCAAACAAGTAA
 TTTAAGCTCTGCAGTTGGTTACTTACAACATCCAGGGTCAAGAACAAGTACAGTTTCTCGAACCCAGTCA
 CCATGCAGCTCTCAACAGCTCCAAGGCCACCAGTGTGCAGCTGTGCCACAGCAGCCACCTGGTGGAGGAA
 TGGTAATGATGCAGCTCAACCTACCAAATAACCCACAGTCTCGGACCCACTCACCACACAGTGGAAACA
 GAACAAGCACTACTGTGACCACCAGAGAGGACAGAAGTGTATGGACTTTAGCAACATGGATAATATTGTT
 CAGCCCAGCCCTCAGTCCAGCAGCCCCATCCTTCTCCAGTGCAGTGCAGCAGCAGCAGTCCAGTGTCCA
 CTCTGAAGACCATCCGTCCTCAGGACCACCGCTTCCATCATGTCCAGTTTGTAGACCTTTTGTTC
 TGGACAGGGAGATGCCAGGTATCCGCTGCTTGGCCAGCCCTGCAGTACAACCTCCTACTCTTCTGCAT
 GGACACATCCACATCAACAGGGTCACTTGGCAGCAGGATGGAACCCAGGACGTAGACAAGTAAAGA
 AAGTGCATCCACAGACTTGGAGCAGGAGAAGCAGTTGTCGGCAAGTCTTGGAAATCACAGAACTACC
 AGACGGAATAACTCGAGTGGAGCCGAGAAGCTTTTTGGGGAACCTTTAAAATTGGCGCCAAGATCCGA
 TGGCTCCGGGACCCCACTCTCAGCCTCAGTGCCTGCTCAGCCTCTCTGCTGTGGTAGTGGGGATAACA
 CTGTCAACCTGAGCACTCTAAACCCAGTACCTGGCCTCTACGTACACTGCTCCTAGCTACGTTCCCTC
 CATTTCAGCTGCACAGAGTGCCTGAAGAAGCAGATCCATTAGTGAACAAGTTAAGCTGAGAATGAGC
 AAGAAGCACTACGATTTCCACATTTTGGAAAGGGCAAGTTCTCAG

ACGCGTACGCGGCCGCTCGAG - GFP Tag - GTTTAA

Protein Sequence:

>MG222917 representing NM_181750
 Red=Cloning site Green=Tags(s)

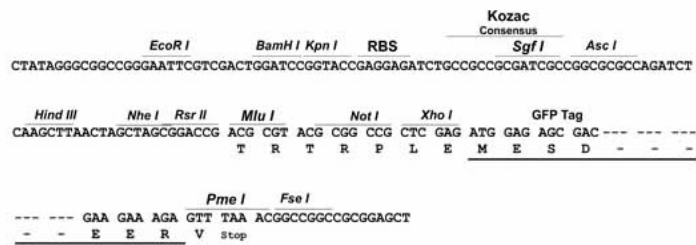
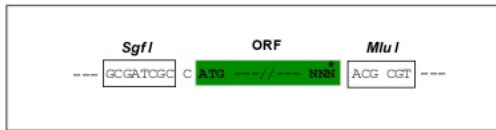
MRMSDIVIIKDEETETMKDLEAEMRDTTRVENLIKSENYGKISAEKNEHCIDNNIDLQRPPQSFQGTGKRS
 KSSSKLKLVRSLAVCEESPPPPAAEISQETQEKIQIQLTQSFEEKEKPSKDETDKEKASDKLPRKMLSRD
 SSQEYTDSTGIDLHEFLVNTLKNPRDRMMLLKLEQEILDFIGNNESPRKKFPMTSYHRMLLHRVAAYF
 GLDHNVDQSGKSVIVNKTSNTRIPDQKFNEHIKDDRGEDFQKRYILKRDNSDFDKDSDQMRIRLKDDRRS
 KSIEEREEYQRRARDRIFSQDSLCSQENYIIDKRIQDEDTIGTQRRQIFRVNKDASGRSTNSHQSSSTEN
 ELKYSEPRPWSSTSDSSLRNLKPAVTKASSFSGISVLRGDSGSSKSIKRLSKTGSSESSGVSSTGSGS
 LSHTQQPLPGSALSQSSHGAPVIYPAASNHSSLDFDGLSGQGASPSTSFLLPLEATGIPPGSILINPQ
 TGQPFLLNPDGSPVYVNPMTQQPVRTQVPGPPPLPPPPPQQAASHMFQSPVGPLQSSSQPVQCSPAP
 YPSLLPVSPQQYVSDNLGAQFSHMSLARQPSADGSDPHATMFQSTVVLQSPQQSGYIVTTAPPHPPP
 PPPPPPSLPPGQSVPTASFSASGHPVSPVLPQQGFLPQPSPQMPACYPAGHYHSSQPQYRIPSVH
 HSSHLNQPLPQPAQHTGYQVMPNQNYQGIQVGVQSPQSLMGGQPNSTGPHIQGVVIPPVSPVSYQVS
 LPQGSQIAHQTYQQPVVFPNQSNQGSLLPTTGMPVYYSVIPPQQSNLSSAVGYLQHPGSEQVQFPRSTS
 PCSQQQLQGHQCAAVPQQPPGGGMVMMQLNLNPNPQSRTHSPPQWKQNKHYCDHQRGQKCMDFSNMNDIV
 QPSPQLSSPILSPVQSPAPAQLSTLKTIRPSGPPLSIMSQFARPFVPGQGDARYPLLQPLQYNPPTLLH
 GHIPHQGQSGSRHNGRRQAKKAASDLDGAGEAVVGKVLITELPDGITRVEAEKLFGEKFKIGAKIR
 WLRDPQSQPLRRHALCCGSDNTVNPEHSPKPSDLASTYTVLATFSPISAAQSALKKQIHSVKNFKLRMS
 KKHDFHILERASSQ

TRTRPLE - GFP Tag - V

Restriction Sites: SgfI-MluI

Cloning Scheme:

Cloning sites used for ORF Shuttling:



ACCN: NM_181750

ORF Size: 3405 bp

OTI Disclaimer: Due to the inherent nature of this plasmid, standard methods to replicate additional amounts of DNA in E. coli are highly likely to result in mutations and/or rearrangements. Therefore, OriGene does not guarantee the capability to replicate this plasmid DNA. Additional amounts of DNA can be purchased from OriGene with batch-specific, full-sequence verification at a reduced cost. Please contact our customer care team at custsupport@origene.com or by calling 301.340.3188 option 3 for pricing and delivery.

The molecular sequence of this clone aligns with the gene accession number as a point of reference only. However, individual transcript sequences of the same gene can differ through naturally occurring variations (e.g. polymorphisms), each with its own valid existence. This clone is substantially in agreement with the reference, but a complete review of all prevailing variants is recommended prior to use. [More info](#)

OTI Annotation: This clone was engineered to express the complete ORF with an expression tag. Expression varies depending on the nature of the gene.

Components: The ORF clone is ion-exchange column purified and shipped in a 2D barcoded Matrix tube containing 10ug of transfection-ready, dried plasmid DNA (reconstitute with 100 ul of water).

Reconstitution Method:

1. Centrifuge at 5,000xg for 5min.
2. Carefully open the tube and add 100ul of sterile water to dissolve the DNA.
3. Close the tube and incubate for 10 minutes at room temperature.
4. Briefly vortex the tube and then do a quick spin (less than 5000xg) to concentrate the liquid at the bottom.
5. Store the suspended plasmid at -20°C. The DNA is stable for at least one year from date of shipping when stored at -20°C.

RefSeq: [NM_181750.2](#), [NP_861415.2](#)

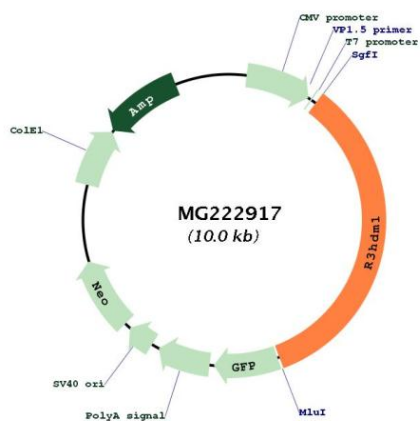
RefSeq Size: 4812 bp

RefSeq ORF: 3408 bp

Locus ID: 226412

Cytogenetics: 1 E3

Product images:



Circular map for MG222917