

Product datasheet for **MG222906**

Grip1 (NM_028736) Mouse Tagged ORF Clone

Product data:

Product Type: Expression Plasmids
Product Name: Grip1 (NM_028736) Mouse Tagged ORF Clone
Tag: TurboGFP
Symbol: Grip1
Synonyms: 4931400F03Rik; eb; GRIP
Mammalian Cell Selection: Neomycin
Vector: pCMV6-AC-GFP (PS100010)
E. coli Selection: Ampicillin (100 ug/mL)
ORF Nucleotide Sequence: >MG222906 representing NM_028736
 Red=Cloning site Blue=ORF Green=Tags(s)

TTTTGTAATACGACTCACTATAGGGCGCCGGGAATTCGTCGACTGGATCCGGTACCGAGGAGATCTGCC
 GCC**CGATCGCC**

ATGATAGCTGTCTCTTTAAATGCCGCTGTCAAATCTAAGGCGACTTACCAAAGATGAGAGTCCCTACA
 CTAATCTGCCAGCCAGACAAAGCCGCCGATGGAGCATTGGCTGTGAGGAGACAGAGCATCCAGAGGA
 ATCAAGGGCTCCACAGTGGTGGAGTTGATGAAGAAGGAGGGAACCACTTTGGCCTGACGGTATCGGGA
 GGCATTGATAAAGATGGCAAGCCAAGAGTGTCCAACCTGCGGCAGGGAGGAATCGCTGCCAGAAGTGACC
 AGCTGGATGTGGGCGACTACATCAAGGCGGTGAATGGGATCAACCTGGCCAAGTTCGCCACGATGAGAT
 CATCAGCCTGCTGAAAAATGTCGGGAAAGAGTGGTCTGGAGGTCGAGTACGAGCTTCCACCGTCTCT
 GTACAAGGATCCAGTGTATGTTCCGAACCTGTGGAGGTCACGCTGCACAAAGAAGGCAACACCTTTGGTT
 TTGTATCCGAGGGGGAGCGCATGATGACAGGAACAAGTCCCGTCCGGTTGTGATAACCTGTGTTGCTCC
 TGGAGGGCCTGTGACAGAGAGGGCACCATCAAACCTGGAGACAGGTTGCTCAGCGTGGATGGAATTCGG
 CTCCTGGGAACCCCATGCCGAGGCCATGAGCATCCTTAAACAGTGGGACAAGAAGCCACGCTGTGTA
 TAGAATACGATGTCTGTGATGGATTCTGTGGCGACAGCATCCGGGCCACTACTAGTTGAAGTTGCCAA
 AACTCCAGGTGCCAGCCTTGGGGTTGCCCTAACTACCTCCGTGTGCTGTAACAAGCAGGTCATTGTCATA
 GACAAAATCAAATCTGCAAGCATTGCGGACAGATGTGGCGGCTACACGTGGGAGACCACATCCTTCCA
 TTGACGGCACGAGTATGGAGTACTGTACCCTCGCAGAAGCGACCCAGTTCCTGGCCAATACCCTGACCA
 GGTCAAGCTGGAGATTCTCCACACCCATCAGACCCGCTGGCCCTAAAGGGCCCTGACCATGTGAAAATT
 CAGAGGAGCGACAGACAACATCCCTGGGATGCCTGGGCCAGCAACCAGTGCAGGCTTCATACCAACCATC
 ACCATAACACGTACCACCCAGACCATTGCAGAGTGCAGCCCTGACTTTCCCGAAAGCGCTTCTCCAAA
 CAGCCCTCCGGCTATGGTGCCCTCATCTTCTCCTACCTCCATGAGTGCCTACAGTCTGAGTTCCTGAAC
 ATGGGGACTTTACCTCGAAGCCTCTACTCCACCAGCCACGAGGAACCATGATGAGGAGGAGACTGAAAA
 AGAAAGACTTCAAAGCTCACTGTCTTTAGCCTCCAGCACTGTGGGGTTGGCTGGCCAGGTCGTTACAC
 TGAACCACAGAGGTTGTGCTGACGGCTGACCCTGTCACGGGCTTCGGAATCCAACCTGCAGGGCAGCGTG



[View online »](#)

TTTGCCACAGAGACGCTCTCCTCTCCGCTCTGATTCCTATATTGAAGCTGACAGCCCAGCAGAGAGAT
 GTGGTGTGCTACAGATTGGAGACAGAGTCATGGCCATTATGGAATCCCAACAGAAGACAGCACCTTCGA
 GGAAGCCAATCAACTCCTGAGAGACTCTCCATCACGAGCAAAGTCACACTAGAAATCGAGTTTGTATGTT
 GCAGAGTCTGTATCCCAAGTAGTGAACATTTTCATGTAAAAGTCCCAAGAAGCACAGCGTGGAACTTG
 GAATAACCATCAGTTCGCCATCCAGTAGAAAACCGGGGACCCCTTGTCAATTCAGATATCAAGAAAGG
 CAGTGTGGCACACAGAACCAGAACTCTGGAAGTGGGAGACAACTGCTTGCATAGATAACATCCGGCTG
 GATAACTGTTCCATGGAAGATGCGGTCCAGATCCTCCAGCAGTGTGAAGACCTGGTCAAAATCC
 GCAAAGATGAAGATAACTCAGACGAGCAAGAGAGTTCGGGAGCGATTATTTACACGGTGGAGCTGAAGCG
 CTATGGGGGGCCCTTGGCATCACAAATTTCTGGAAGTGAAGAGCCGTTTGTATCCTATTATCATCTCGAGC
 CTCCTAAAGGGGATTAGCTGAAAGGACTGGAGCGATCCACATCGGAGATAGAATCCTAGCCATCAATA
 GCAGCAGCTTGAAGGGGAAGCCTCTGAGTGAAGCCATCCACTTGTCCAGATGGCAGGAGAGACTGTCAC
 CCTGAAAATTAAGAAACAGACAGATGCCAATCTGCATCAAGTCCCAAGAAGTCCCCATCCCTGGCCAC
 TCGGGGGACCTAGGAGATGGTGAAGGAGCCCTCCCAATACAGAAACCTGGCAAGCTCTCCGATGCGT
 ACCCTCCACGGTCCCAGCGTGGACAGTGTGTGGACTCCTGGGATGGGTCTGGAATAGATGCCAGCTA
 TGGGAGTCAAGGCTCAACTTTTTCAGACTTCAGGATACAATTACAACACCTATGATTGGAGGAGTCCAAAG
 CAAAGAACCAGCCTGTCCCCAGTCCCAAGCCTCGAAGCCAGACGTACCCAGATGTGGGCCCTGAGTAATG
 AAGACTGGGATCGATCCACAGCCAGTGGCTTTGTAGGGGCTTCTGACAGTGCAGATGCTGAACAAGAGGA
 AAATTTCTGGTCTCAAGCATTGGAGGACCTGGAGACCTGCGGCCAGTCCGGGATCCTGAGAGAGCTTGGAG
 GAGAAAGCTGACAGGCGTGTGTCATTGAGAAACATGACCTCTTGGCAACAATCATGTCCGGGAGTACTA
 TGAGTTTGAAATCATGAGGCTCCAATGGCTCGCAGTCAGCTGGGGCGACAGCCAGCTTCCAGGAACGGAG
 CAGTTCACGGCCACACTATAGCCAAACAACCTCGCAGCAACACCCTGCCCTCAGACGTGGGCGAAAGTCT
 GTAACCTGCGGAAAATGAAGCAAGAAAATAAGGAGATCATGTCCCAACTCCGGTGGAGCTACACAAGG
 TGACCTTATACAAGGACTCTGGCATGGAGGACTTCGGGTTCAAGTGTGCAGATGGCCTCTGGGAGAAAGG
 CGTGTATGTCAAAAATATCCGCCAGCTGGGCCAGGTGATGTTGGGGGCTTGAAGCCCTACGACAGGCTC
 TTACAGGTAATCAGTGCAGCAGAGACTTTGACTGCTGCCTGGTGGTGCCTCTCATAGCTGAATCTG
 GCAACAAGCTGGACCTGTTATTAGCAGAAATCCACTGGCCTCCCAAGTTCGATAGAACAGCCGCTCT
 GCCCAGCGACTGGAGCGAACAGAACAGCGCTTTCTCCAGCAACCAGCCAGCGTGGTAATCTAGAGACA
 CGAGAACCCTAACACACTA

ACGCGTACGCGGCCGCTCGAG – GFP Tag – GTTTAA

Protein Sequence:

>MG222906 representing NM_028736
 Red=Cloning site Green=Tags(s)

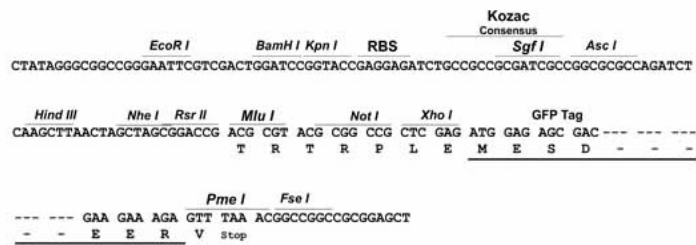
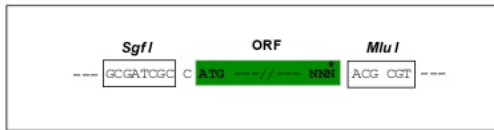
MIAVSFKCRCQILRRLTKDESPYTKSASQTKPPDGALAVRRQSIPEEFKSTVVELMKKEGTTLGLTVSG
 GIDKDGKPRVSNLRQGGIAARSDQLDVGDYIKAVNGINLAKFRHDEIISLLKNVGERVVLEVEYELPPVS
 VQGSVMFRTVEVTLHKEGNTFGFVIRGGAHDDRNRKSRPVVITCVRPGPADREGTIKPGDRLLSVDGIR
 LLGTTTHAEAMSILKQCGQEATLLIEYDVSVMDSVATASGPLLVEVAKTPGASLGVALTTSVCCNKQVIVI
 DKIKSASIA DRGALHVDHILSIDGTSMEYCTLAEATQFLANTTDQVKLEILPHHQTRLALKGPDHVKI
 QRSDRQHPWDASWASNQCQGVHTNHHHNTYHPDHCRVPALTFPKALPPNSPPAMVPSSTMSAYSLSLNLN
 MGLTPRSLYSTSPRGTMRRRLKKKDFKSSLSLASSTVGLAGQVVHTETTEVVLADPVTGFGIQLQGSV
 FATETLSSPPLISYIEADSPAERCGLVQIGDRVMAINGIPTEDSTFEEANQLLRDSSITSKVTLEIEFDV
 AESVIPSSGTFHVKLPKKHSVELGITISSPSSRKPDPVVISDIKKGVAHRTGTLELGDKLLAIDNIRL
 DNCSMEDAVQILQQCEDLVKLIRKDEDSDEQESSGAIITYVELKRYGGPLGITISGTEEPFDPIISS
 LTKGGLAERTGAIHIGDRILAINSSSLKGLSEAIHLLQMAGETVTLKIKKQTDASASSPKKFPKIPGH
 SGDLGDGEEDPSPIQKPGKLSDAYPSTVPSVDSAVDSWDGSGIDASYGSQGSTFTQTSYNYNTYDWRSPK
 QRTSLSPVPKPRSQTYPDVGLSNEDWRSTASGFVGSADSAEAQEEENFWSQALEDLETCGQSGILRELE
 EKADRRVSLRNMTLLATIMSGSTMSLNHEAPMARSQGRQASQFQERSSSRPHYSQTTRSNTLPSVDGRKS
 VTLRKMKEIKEIMSPTVELHKVTLKYDSGMEDFGFVADGALLEKGVYVKNIRPAGPGDVGLKPYDRLL
 LQVNHVTRDFDCCCLVPLIAESGNKLDLVISRNPLASQKSIEQPALPSDWSEQNSAFFQPSHGGNLET
 REPTNTL

TRTRPLE – GFP Tag – V

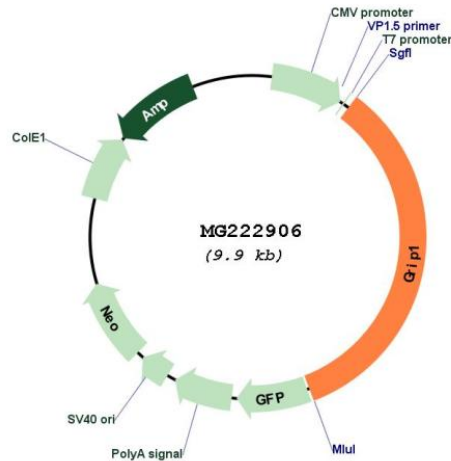
Restriction Sites: SgfI-MluI

Cloning Scheme:

Cloning sites used for ORF Shuttling:



Plasmid Map:



ACCN: NM_028736

ORF Size: 3381 bp

OTI Disclaimer: The molecular sequence of this clone aligns with the gene accession number as a point of reference only. However, individual transcript sequences of the same gene can differ through naturally occurring variations (e.g. polymorphisms), each with its own valid existence. This clone is substantially in agreement with the reference, but a complete review of all prevailing variants is recommended prior to use. [More info](#)

OTI Annotation: This clone was engineered to express the complete ORF with an expression tag. Expression varies depending on the nature of the gene.

Components: The ORF clone is ion-exchange column purified and shipped in a 2D barcoded Matrix tube containing 10ug of transfection-ready, dried plasmid DNA (reconstitute with 100 ul of water).

Reconstitution Method:

1. Centrifuge at 5,000xg for 5min.
2. Carefully open the tube and add 100ul of sterile water to dissolve the DNA.
3. Close the tube and incubate for 10 minutes at room temperature.
4. Briefly vortex the tube and then do a quick spin (less than 5000xg) to concentrate the liquid at the bottom.
5. Store the suspended plasmid at -20°C. The DNA is stable for at least one year from date of shipping when stored at -20°C.

RefSeq: [NM_028736.2](#), [NP_083012.1](#)

RefSeq Size: 3537 bp

RefSeq ORF: 3384 bp

Locus ID: 74053

UniProt ID: [Q925T6](#)

Cytogenetics: 10 67.33 cM

Gene Summary:

This gene encodes a protein containing multiple PDZ (post synaptic density protein, Drosophila disc large tumor suppressor, and zonula occludens-1 protein) domains. The encoded protein acts as a mediator between cytoskeletal and membrane proteins, particularly in neuronal cells, and facilitates complex formation at the cell membrane. Mutation of this gene can cause embryonic lethality resulting from defects of the dermo-epidermal junction. Alternative splicing results in multiple transcript variants. [provided by RefSeq, Mar 2013]