

Product datasheet for **MG222905**

Drd5 (NM_013503) Mouse Tagged ORF Clone

Product data:

Product Type:	Expression Plasmids
Product Name:	Drd5 (NM_013503) Mouse Tagged ORF Clone
Tag:	TurboGFP
Symbol:	Drd5
Synonyms:	D5R; Drd-5; Drd1b; Gpcr1
Mammalian Cell Selection:	Neomycin
Vector:	pCMV6-AC-GFP (PS100010)
E. coli Selection:	Ampicillin (100 ug/mL)



[View online »](#)

ORF Nucleotide Sequence:

>MG222905 representing NM_013503
 Red=Cloning site Blue=ORF Green=Tags(s)

TTTTGTAATACGACTCACTATAGGGCGGCCGGGAATTCGTCGACTGGATCCGGTACCGAGGAGATCTGCC
 GCC**CGGATCGCC**

ATGCTGCCTCCTGGGCGCAATGGCACCGCACATCGGGCGGGCTGGGGTTGCAGAGGCAACTGGCGCAGG
 TGGACGCCCCCGGGGCTCAGCAGCCCCACTGGGACCCGCGCAGGTGGTCACCGCTGGCCTCCTGACTCT
 CTTAATCGTCTGGACCTTCTCGCAACGTCCTAGTGTGTGCTGCTATCGTCCGACGCGCCACCTGCGC
 GCCAAAATGACCAACATCTTCATCGTATCTCTGGCCGTCTCAGACCTCTTCGTGGCATTGCTGGTCATGC
 CTTGGAAGGCCGTGGCTGAGGTGGCCGGTACTGGCCCTTTGGGGCATTCTGCGACATCTGGGTGGCCTT
 TGACATCATGTGCTCCACTGCTCCATCCTGAATCTGTGTATCATCAGCGTGGACCGGACTGGGCTATT
 TCCAGACCCTCCGCTACGAGCGCAAGATGACCCAGCGTGTAGCCCTGGTCATGGTGGCCCTGGCCTGGA
 CCTTGCCATCCTCATCTCCTTTATCCCGTCCAACCAATTGGCACAGAGACAAGGCAGGCTCCCAGGG
 CCGAGAGGGCCTGCTGTCCAATGAGACACCTGGGAGGAAGGTTGGGAGCTAGACGGGAGAACAGAGAAC
 TGTGACTCCAGCCTGAACCGAACCTACGCCATCTCCTCGTCGCTCATCAGCTTCTATATCCCGGTAGCCA
 TCATGATAGTGACCTACACGCGCATCTACCGCATTGCACAGGTTGAGATCCGCCGTATCTCTCCCTAGA
 AAGGGCAGCTGAGCATGCTCAGAGTTGCCGGAGCCGTGGGGCCTGCGAACCTGACCCAGCCTGCGAGCA
 TCCATCAAGAAGGAGACCAAGGTCTTCAAACCCTGTCCGTGATCATGGGGTCTTCGTGTGCTGCTGGT
 TGCCTTTCTTCATCCTGAACTGTATGGTTCCCTTCTGCAGCAGTGGAGATGCCAGGGCCCAAGGACTGG
 CTTCCCTGTGTGTCAGCGAGACCCTTCGACATATTCGTCTGGTTTGGCTGGGCAACTCCTCTCTCAAC
 CCCATCATCTATGCCTTTAATGCAGACTCCGGAAGGTGTTGCCAGCTGCTGGGGTGCAGCCACCTCT
 GCTTCCGACCCCGTGCAGACGTAACATCAGTAATGAACTATTTCCATAACCAAGACACGGTCTT
 CCACAGGAGATCGCTGCTGCCTATGTCCACATGATCCCAAATGCGGTGTCCTCCGGAGACAGGGAGGTG
 GGAGAGGAGGAGGGCGGAGGAGGGGCTTTTCGATCACATGCTCAATCTCTCAACGACCCAG
 ATGGTGACCTGGCTGCTGAGTCTGTCTGGGAGCTTACTGTGAGGAGGAGGTTTCTTAGGCAAAATCTC
 ACCACTCACCCCAATTGTTCCATAAACTGCT

ACGCGTACGCGGCCGCTCGAG - GFP Tag - GTTTAA

Protein Sequence:

>MG222905 representing NM_013503
 Red=Cloning site Green=Tags(s)

MLPPGRNGTAHRARLGLQRQLAQVDAPGGSAAPLGAQVVTAGLLTLLIVWTLGNVLVCAAIVRSRHLR
 AKMTNIFIVSLAVSDFVALLVMPWKAVAEVAGYWPFGAFCDIWAFFDIMCSTASILNLCIISVDRYWAI
 SRPFRYERKMTQRVALVMVALAWTLSILISFIPVQLNWHRDKAGSQGREGLLSNETPWEEGWELDGRTE
 CDSSLNRTYAIISSLSIFYIPVAIMIVTYTRIIYRIAQVQIRRISSLERAAEHAQSCRSGACEPDPPLRA
 SIKKETKVFKTLVIMGVFVCCWLPFFILNCMPFCSSGDAQGPRTGFPCVSETTFDIFVWFGWANSSLN
 PIYAFNADFRKVFQALLGCSHLCFRTPVQTVNINELISYNQDTVHREIAAAVYVHMIPNAVSSGDREV
 GEEEEAEIEEPPFDHMSQISPTTPDGLAAESVWELDCEEEVSLGKISPLTPNCFHKTA

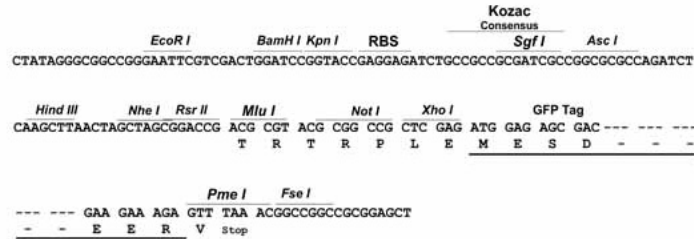
TRTRPLE - GFP Tag - V

Restriction Sites:

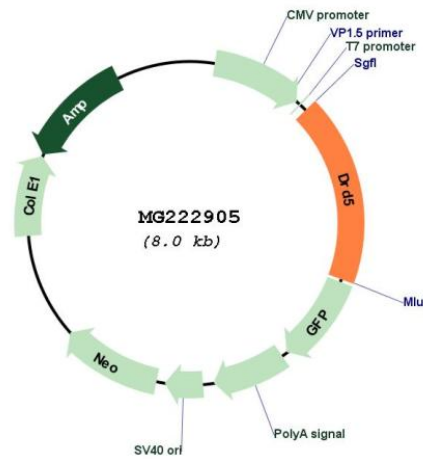
SgfI-MluI

Cloning Scheme:

Cloning sites used for ORF Shutting:



Plasmid Map:



ACCN: NM_013503
 ORF Size: 1434 bp

OTI Disclaimer:	<p>Due to the inherent nature of this plasmid, standard methods to replicate additional amounts of DNA in E. coli are highly likely to result in mutations and/or rearrangements. Therefore, OriGene does not guarantee the capability to replicate this plasmid DNA. Additional amounts of DNA can be purchased from OriGene with batch-specific, full-sequence verification at a reduced cost. Please contact our customer care team at custsupport@origene.com or by calling 301.340.3188 option 3 for pricing and delivery.</p> <p>The molecular sequence of this clone aligns with the gene accession number as a point of reference only. However, individual transcript sequences of the same gene can differ through naturally occurring variations (e.g. polymorphisms), each with its own valid existence. This clone is substantially in agreement with the reference, but a complete review of all prevailing variants is recommended prior to use. More info</p>
OTI Annotation:	This clone was engineered to express the complete ORF with an expression tag. Expression varies depending on the nature of the gene.
Components:	The ORF clone is ion-exchange column purified and shipped in a 2D barcoded Matrix tube containing 10ug of transfection-ready, dried plasmid DNA (reconstitute with 100 ul of water).
Reconstitution Method:	<ol style="list-style-type: none"> 1. Centrifuge at 5,000xg for 5min. 2. Carefully open the tube and add 100ul of sterile water to dissolve the DNA. 3. Close the tube and incubate for 10 minutes at room temperature. 4. Briefly vortex the tube and then do a quick spin (less than 5000xg) to concentrate the liquid at the bottom. 5. Store the suspended plasmid at -20°C. The DNA is stable for at least one year from date of shipping when stored at -20°C.
RefSeq:	NM_013503.3 , NP_038531.1
RefSeq Size:	2802 bp
RefSeq ORF:	1437 bp
Locus ID:	13492
UniProt ID:	Q8BLD9
Cytogenetics:	5 20.4 cM
Gene Summary:	Dopamine receptor whose activity is mediated by G proteins which activate adenylyl cyclase. [UniProtKB/Swiss-Prot Function]