

Product datasheet for **MG222902**

Scn5a (NM_021544) Mouse Tagged ORF Clone

Product data:

Product Type:	Expression Plasmids
Product Name:	Scn5a (NM_021544) Mouse Tagged ORF Clone
Tag:	TurboGFP
Symbol:	Scn5a
Synonyms:	mH1; Nav1.5; Nav1.5c; SkM1; SkM2
Mammalian Cell Selection:	Neomycin
Vector:	pCMV6-AC-GFP (PS100010)
E. coli Selection:	Ampicillin (100 ug/mL)
ORF Nucleotide Sequence:	>MG222902 representing NM_021544 Red=Cloning site Blue=ORF Green=Tags(s)

TTTTGTAATACGACTCACTATAGGGCGGCCGGAATTCGTCGACTGGATCCGGTACCGAGGAGATCTGCC
GCC**CGATCGCC**

ATGGCAAACCTTCTGTTACCTCGGGCACCAGCAGCTTCCGTAGGTTACCCGGGAGTCACTGGCGGCCA
TCGAGAAGCGCATGGCTGAAAAACAAGCCCGTGGTTCGGCCACCTCACAGGAGAGCCGTAGGGCCCTGCC
AGAGGAGGAGGCTCCCCGGCCCCAGCTGGACCTACAGGCCCTCAAAAAGCTGCCAGATCTCTATGGCAAC
CCACCCGAGAGCTCATTGGGGAGCCCCGGAAGACCTGGACCTTTCTATAGTACCCAGAAGACCTTCA
TCGTGCTGAATAAGGGCAAACCATCTCCGGTTCAGTGCCACCAATGCCTTGTACGTCCTCAGCCCTT
CCACCCGGTGCAGAGCGGCTGTGAAGATTTTGGTACATTCGCTCTTACGATGCTCATCATGTGCACC
ATCCTAACCAACTGTGTGTTTCATGGCACAACACGACCCTCCGCCTTGGACCAAATATGTTGAGTACACCT
TCACCGCCATCTACACCTTTGAGTCTCTGGTCAAGATTCTAGCTCGAGGCTTCTGCCTGCATGCGTTTAC
CTTCTCCGGGACCCGTGGAACCTGGCTAGACTTCAAGTGTGATCGTCATGGCGTATGTATCAGAGAATATA
AAGCTAGGCAATTTGTCGGCTCTTCAACTTTCAGAGTCTGAGAGCTCTGAAAACGATTTCAAGTATTTC
CAGGCCGAAGACAATCGTGGGAGCCCTAATCCAGTCTGTGAAGAAGCTAGCCGATGTGATGGTCCCTTAC
TGTCTTCTGCCTCAGTGTCTTTGCCCTCATTGGCTGCAGCTCTCATGGCAACCTGAGGCACAAGTGC
GTGCGTAACCTTACTGAGCTCAATGGCACAATGGTTCGGTGGAGCCGATGGCAGTCTGGAACCTCTC
TGGAGTCTACCTCAATGACCCAGCCAATTACCTACTCAAGAATGGCACCACGGATGTGTTGTGTGG
GAACAGCTCTGATGCCGGACATGTCCTGAAGGCTACCGTGCCTGAAGGAGGTGAGAACCCTGACCAC
GGTTACACCAGCTTCGACTCCTTCGCTGGGCTTTCCTTGCCTCTTCCGCTGATGACACAGGACTGCT
GGGAACGTCTATACCAGCAGACCCTGAGGTCCGCAGGAAAGATCTACATGATCTTCTTATGCTTGTGAT
ATTCTGGGCTCCTTCTACCTTGTGAACCTTGTGCTGTGGTGGCCATGGCTTACGAGGAGCAAAC
CAAGCCACCATCGCCGAGACGGAAGAGAAGGAGAAGCGTTTCCAGGAGCCATGGAGATGCTCAAGAAGG
AACACGAGGCTCTCACCATCAGGGCGTGGATACTGTGTCCCGTAGCTCTCTGGAGATGTCTCCTTTGCC
CCCAGTAACCAACCATGAGAGAAGGAGCAAGAGGAGGAAACGACTGTCTTCAAGGACAGAGGATGGCGGA



[View online »](#)

GATGACAGGCTCCCCAAGTCGGACTCAGAAGACGGTCCCAGAGCATTGAATCAGCTCAGCCTCACCCATG
GGCTCAGCCGGACATCCATGAGGCCCGCTCCAGCCGAGGGAGCATTTCACATTCGGCGACGGGACCA
AGGCTCCGAGGCAGATTTTGCAGATGACGAGAACAGTACAGCAGGAGAGAGCGAGAGCCACCCGACATCG
CTGCTGGTGGCCCTGGCCCTGCGCCGTCACAGCACCAAGGGCAGCCGGCTTTGGAACCTCAGCTCCTG
GTCATGTCCTCAATGGCAAAAAGAACAGCACCGTGGACTGCAATGGGGTGGTTTCCTTGCTGGGGCAGG
GGAGCGAGAGGCCACCTCTCCAGGGAGCCACCTTCTCCGCCATAGTGTGACAGACCCCCAGACACG
ACCACGCCGTCAGAGGAGCCGGTGGGCCCCAGATGCTGACACCCGAGGCTCCATGTGCAGATGGCTTTG
AGGAGCCCGGGGACGGCAACGGCACTCAGCCGTCAGTGTCTCACCAGCGCTTGGAAAGAGTTGGA
GGAGTCCACCGTAAGTGTCCACCATGCTGGAATCGCTTTGCCAGCATTACCTCATCTGGGAGTGTCTGC
CCTCTGGATGTCCATCAAGCAGAAGGTGAAGTTCGTGGTCTGGACCCGTTTGTGACCTCACCATCA
CCATGTGCATCGTCTAACACGCTCTTTCATGGCTCTGGAGCACTACAACATGACAGCCGAGTTTGGGA
GATGCTGCAGGTCGAAACTTGGTCTTACGGGAATCTTACGGCAGAGATGACCTTCAAGATCATCGCC
CTTGACCCATACTACTTCCAGCAGGGCTGGAATATCTTCGACAGCATCATCGTCATCCTCAGCCTCA
TGGAGCTGGCCCTGTCTCGCATGGCAACCTGTCTGTGCTGCGTTCCTCCGTCTGCTGCGGGTCTTCAA
GCTGGCCAAATCATGGCCACCCTGAACACACTCATCAAGATCATCGGAACTCTGTTGGTGGCCCTGGGG
AACCTGACCCCTGGTGTGCCATCATCGTCTTTCATCTTCGCCGTTGGTGGTATGCAGCTCTTCGGCAAGA
ACTACTCAGAGCTGAGGCACCGAATCAGCGACTCTGGCCTGTGCCCCGCTGGCAGATGATGGACTTCTT
CCACGCCCTTCTCATCATCTTCCGCATCCTCTGTGGAGAGTGGATCGAGACCATGTGGGACTGCATGGAG
GTGTCTGGGCAGTCGCTGTGCTTGTGCTTCTCTGCTGGTCAATGGTCAATGGCAACCTTGTGGTCTGA
ATCTCTTCTTGGCCTTGTGCTCAGTCTTTCAGCGCAGACAACCTCACAGCCCTGACGAGGATGGGGA
GATGAACAACCTCCAGCTGGCCCTGGCTCGCATCAAAGGGGCCCTTCGCTTGTCAAGCGGACCACTGG
GACTTCTGCTGCGGGCTCTGCGCGGGCAGCTAAGAAGCCCGGGCTCTTGGCACCACAGCCAGCTGC
CCAGCTGATCGCCGCTCCAGGTCACCCACCCAGAGGTGGAGAAGGCGCCCGCCAGCCCGGCAAGGA
AACACGGTTCGAGGAAGACAAGCGCGCCAGGGCACCCCTGGGGATACCGAGCTGTGTGTGTTCC
ATCGCAGTGGCTGAGTCAGACACTGATGACCAGGAAGAGGATGAGGAGAACAGCCTTGGCACGGAGGAG
AAGAGTCCAGCAAACAGCAGGAATCCCAAGTGTGTCTGGTGGCCACGAGCCCCCAGGAGCCAGGGC
CTGGAGCCAGGTGTGAGAGACCACATCCTCTGAAGCCGAGGCCAGTACGTCTCAGGCAGACTGGCAGCAA
GAGCGGGAAGCGGAGCCCGGGCCCGGGTGGGTCGACTCCCGAGGACAGTTACTCCGAGGGTAGCA
CCGCTGACATGACCAACCCGACACTCTGGAGCAAATCCAGACCTCGGGGAGGACGTCAAGGACCC
AGAGGACTGCTTCACTGAAGGCTGCGTCCGACGTTGCTTGTGCTGATGGTGGACAGCAGCAGGCCCA
GGGAAGGTCTGGTGGAGACTGCGCAAGACTGCTACCGCATAGTGGAGCAGACTGGTTCGAGACTTTCA
TCATCTTTCATGATCCTGCTCAGCAGCGGAGCGCTGGCCTTCGAGGACATCTACCTGGAGGAGCGGAAGAC
CATCAAGGTTCTGCTGGAGTACGCCGACAAGATGTTACCTATGTCTTTGTGTTGGAGATGCTGCTCAAG
TGGGTGGCCTACGGCTTCAAGAAGTACTTCACCAACGCCTGGTGTGGTGGACTTCTAATTGTGGACG
TCTCACTGGTCAGCCTCGTGGCCAACACCTTAGGCTTTGCCGAGATGGGTCCCATCAAGTCCCTGAGGAC
ACTGCGTGCATTCGACCCTGAGGGCTTTGTACGATTCGAGGGCATGAGGGTGGTGGTCAACGCGCTG
GTGGGCGCCATCCCTCCATCATGAATGTCCTCCTCGTCTGCCTCATCTTCTGGTCACTTTCAGCATCA
TGCGGCTGAACCTCTTCGCGGGAAGTTCGGTAGGTGCATCAACCAGACCGAAGGGGACCTGCCTGAA
CTACACCATTTGGAACAACAAGAGCGAGTGTGAGTCTTCAACGTGACTGGAGAGTTGTACTGGACCAAG
GTGAAAGTCAACTTTGACAACGTGGGGGCTGGGTACCTGGCCCTGCTGCAGGTGGCGACATTTAAAGGCT
GGATGGACATCATGTATGCGGCTGTGGACTCCAGAGGGTATGAAGAGCAGCCGAGTGGGAGGACAACCT
CTACATGTACATCTACTTCGTCGCTTTCATCATCTTCGGCTCCTTCTTACCCTCAACCTGTTTATTGGT
GTCATCATTGATAACTTCAACCAGCAGAAGAAAAGTTAGGGGGCCAGGACATCTTCATGACGGAGGAGC
AGAAGAAGTACTACAATGCCATGAAGAAGCTGGGCTCAAAGAAACCCAGAGCCATCCACAGGCCTCT
GAACAAGTACCAGGGTTTCATATTCGACATTGTGACCAAGCAGGCCTTCGATGTTACCATCATGTTCCCTC
ATCTGTTTAAACATGGTGACCATGATGGTAGAGACAGATGATCAGAGCCCTGAAAAGTCAACATCTTGG
CCAAGATCAACCTGCTCTTCGTGGCCATCTTACAGGAGAGTGTATTGTCAAGATGGCTGCCCTGCGCCA
CTATTACTTACCAACAGCTGGAACATCTTCGATTTTCGTGGTGTGCATCCTCTCCATCGTTGGCACTGTC
CTCTCCGACATCATCCAGAAGTACTTCTTCCCCAACGCTCTTCCGTGTGCATCCGTCTGGCCAGGATCG
GCCGATCCTCAGGCTGATCCGAGGAGCAAGGGGATTCGCACGTTGCTCTTCGCCCTCATGATGTCCTT
GCCCGCCCTTCAACATCGGCCCTCCTCTTCTCTCGTCATGTTTCATCTACTCCATCTTCGGCATGGCC
AACTTTGCTACGTCAAGTGGGAGGCTGGCATCGACGACATGTTCAACTTCCAGACCTTTGCCAACAGCA

TGCTGTGCCTTTTCCAGATCACCACGTCGGCTGGCTGGGATGGCCTCCTCAGCCCCATCCTCAACACAGG
 ACCCCCCTACTGTGACCCCAACCTGCCAACAGCAATGGCTCCAGGGGAACTGTGGGAGCCAGCAGTG
 GGCATCCTCTTCTTACCACCTACATCATCTCCTTCTCATCGTGGTCAACATGTACATTGCCATCA
 TCCTGGAGAACTCAGTGTGGCCACAGAAGAGACACAGAGCCCCGAGCGAGGATGACTTCGACATGTT
 CTATGAGATCTGGGAGAAGTTCGACCCGGAGGCCACCCAGTTCATTGAGTATTTGGCCCTGTCCGACTTT
 GCCGATGCCCTGTCTGAGCCACTCCGCATCGCCAAGCCCAACAGATAAGCCTCATCAATATGGACCTGC
 CCATGGTGAGCGGGGACCGCATCCACTGTATGGACATCCTGTTTCGCCTTACCAAGAGGGTGTCTCGGGGA
 GTCTGGGAGATGGATGCCCTGAAGATCCAGATGGAGGAGAAATTCATGGCGGCCAATCCTTCCAAGATC
 TCCTATGAGCCATCACCACCACCTGCGGCGAAAACATGAGGAGGTGTGGGCCACGGTCTCCAGCGGG
 CCTTCCGAGGCACCTCCTGCAGCGCTCGGTGAAGCATGCTTCTTCTTCCGCCAGCAAGCGGGCAG
 CAGTGGCCTCTCTGATGAGGATGCCCCGAGCGAGAGGGACTCATTGCCTACATGATGAATGAGAACTTC
 TCCCGCGCAGCGGTCCCTCTCCAGCTTCCATCTCCTCCACGTCCTTCCACCGTCTATGACAGCG
 TCACGAGGGCCACCAGTGATAACCTCCCAGTGCCTGCGTGGACTACAGCCGAGCGAAGATCTTGAGA
 CTTCCCTCCATCTCCAGATAGGGACCGAGAGTCTATAGT

ACGCGTACGCGGCCGCTCGAG - GFP Tag - GTTTAA

Protein Sequence:

>MG222902 representing NM_021544
 Red=Cloning site Green=Tags(s)

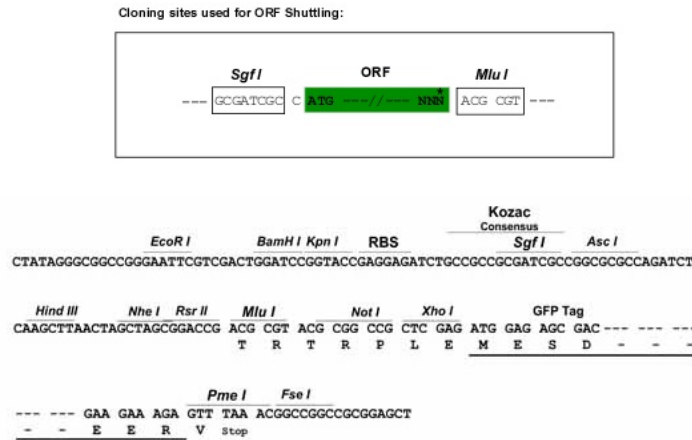
MANFLLPRGTSSFRFTRESLAAIEKRMAEKQARGSATSQESREGLPEEEAPRPQLDLQASKKLPDLYGN
 PPRELIGEPLDLPFYSTQKTFIVLNKGTIFRFSATNALYVLSFHPVRRAAVKILVHSLF SMLIMCT
 ILTNCVMAQHDPWPWKYVEYFTAIYTFESLVKILARGFCLHAFTFLRDPWNWLDVSVIYMAYVSENI
 KLGNSALRTRFRVLRALKTISVIPGLKTI V GALIQSVKKLADVMVLTVFCLSVFALIGLQLFMGNLRHKC
 VRNFTELNGTNGSVEADGIVWNSLDVYLNDPANYLLKNGTTDVLVLCGNSSDAGTCEGYRCLKAGENPDH
 GYTSFDSFAWAF LALFRLMTQDCWERLYQQT LRSAGKIYMIFFMLVIFLGSFYLVNLI LAVVAMAYEEQN
 QATIAETEKEKRFQEAEME LKKEHEAL TIRGVDTVSRSSLEMSPLAPVTNHERRSKRRKRLSSGTEDEG
 DDRLPKSDSEDPALNQLSLTHGLSRTSMRPRSSRGSIFTFRRRDQGEADFFADDENSTAGESESHRTS
 LLVWPWLRPSTQGGPFGTSAPGHV LNKRNSTVDCNGVVSLGAGDAEATSPGSHLLRPVLD RRPDT
 TTPSEEPGGPQMLTPQAPCADGFEEPGARQRALSAVSVLTSAL EEELEESHKCPPCWNRFAQHYL IWECC
 PLWMSIKQKV FVMDFADLTI TMCIVLNTLFMALEHYNM TAEFEEMLQVGNLVFTGIFTAEMTFKIIA
 LDPYYFQGGWNIFDSII VILS LMEGLSRMGNLSVLSFRLLRVFKLAKSWPTLNTL IKIIGNSVGALG
 NLTVLVAIIVFIFAVVGMQLFGKNYSELRHRISDSGLLPRWHMDFHAF LIIIFRILCGEWIETMWDCE
 VSGQSLCLLVFLVMVIGNLVVNLFLALLSSFSADNL TAPDEDEGMNNLQLALARIQRGLRFVKRTTW
 DFCCGLLRRRPKKPAALATHSQLPSCIAAPRSPPPPEVEKAPPARKETRFEE DKRPGQGTGDPTEPVCV
 IAVAESD TDDQEEDENSLGTEEESSKQESQVVSGGHEPPQEPRAWSQVSETT SSEAEASTSQADWQQ
 ERAEAPRPGCGETPEDSYSEGSTADMTNTADLLEQIPDLGEDVKDPEDCFTEGCVRRCPCCMVDTTQAP
 GKVWVRLRKT CYRIVEHSWFETFIIFMILLSSGALAFEDIYLEERKTIKVLLEYADKMFTYV FVLEMLLK
 WVAYGFKYFTNAWCWLDL FIVDVSLSLVANTLGF AEMGPIKSLRTRLRALRPLRALSRFEGMRVVNAL
 VGAI PSIMNVLLVCLIFWLIFSIMGVNLFAGKFGRCINQTEGDLPLNYTIVNNKSECESFNVTGELYWTK
 VKVNFNDV GAGYLALLQVATFKGWMDIMYAAVDSRGYEEQPQWEDNLYMYIYFVVFIIIFGSFFTLNLFIG
 VIIDNFNQK KKLGGQDIFMTEEQK KYNNAMKLGSKKPQKPIPRPLNKYQGFIFDI VTKQAFDVTIMFL
 ICLNMVTMMVETDDQSPEKVNILAKINLLFVAIFTGECIVKMAALRHYYFTNSWNIFDFV VVILSIVGT
 LSDIIQKYFFSPTLFRVIRLARIGRILRLIRGAKGIRTL L FALMMSLPALFNIGLLLFLVMFIYSIFGMA
 NFAYVKWEAGIDDMFNQTFANSM LCLFQITTSAGWDGLLSPILNTGPPYCDPNLPNSNGSRGNCGSPAV
 GILFFTTYIIISFLIVVNM YIAIILENFSVATEESTEPLSEDDFDMFYEIWEKFDPEATQFIEYLAL SDF
 ADALSEPLRIAKPNQISLINMDLPMVSGDRIHCM DILFAFTKRVLGESGEMDALKIQMEEKFMAANPSKI
 SYEPI TTTLRKH EEV SATVIQRAFRRHLLQRSVKHASF LFRQQAGSSGLSDEDAPEREGLIAYMMNEN
 SRRSGPLSSSSISSTSFPPSYDSVTRATSDNLPVRASDYSRSEDLADFPSPDRDRESIV

TRTRPLE - GFP Tag - V

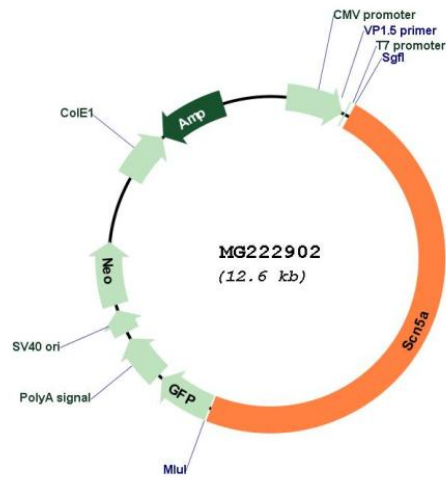
Restriction Sites:

Sgfl-MluI

Cloning Scheme:



Plasmid Map:



ACCN: NM_021544

ORF Size: 6060 bp

OTI Disclaimer: The molecular sequence of this clone aligns with the gene accession number as a point of reference only. However, individual transcript sequences of the same gene can differ through naturally occurring variations (e.g. polymorphisms), each with its own valid existence. This clone is substantially in agreement with the reference, but a complete review of all prevailing variants is recommended prior to use. [More info](#)

OTI Annotation: This clone was engineered to express the complete ORF with an expression tag. Expression varies depending on the nature of the gene.

Components:	The ORF clone is ion-exchange column purified and shipped in a 2D barcoded Matrix tube containing 10ug of transfection-ready, dried plasmid DNA (reconstitute with 100 ul of water).
Reconstitution Method:	<ol style="list-style-type: none">1. Centrifuge at 5,000xg for 5min.2. Carefully open the tube and add 100ul of sterile water to dissolve the DNA.3. Close the tube and incubate for 10 minutes at room temperature.4. Briefly vortex the tube and then do a quick spin (less than 5000xg) to concentrate the liquid at the bottom.5. Store the suspended plasmid at -20°C. The DNA is stable for at least one year from date of shipping when stored at -20°C.
RefSeq:	NM_021544.4 , NP_067519.2
RefSeq Size:	8452 bp
RefSeq ORF:	6063 bp
Locus ID:	20271
UniProt ID:	Q9JIV9
Cytogenetics:	9 71.33 cM
Gene Summary:	This protein mediates the voltage-dependent sodium ion permeability of excitable membranes. Assuming opened or closed conformations in response to the voltage difference across the membrane, the protein forms a sodium-selective channel through which Na(+) ions may pass in accordance with their electrochemical gradient (PubMed:11834499, PubMed:23420830). It is a tetrodotoxin-resistant Na(+) channel isoform. This channel is responsible for the initial upstroke of the action potential. Channel inactivation is regulated by intracellular calcium levels (By similarity).[UniProtKB/Swiss-Prot Function]