

## Product datasheet for **MG222893**

### **Itgb5 (NM\_001145884) Mouse Tagged ORF Clone**

#### **Product data:**

Product Type:	Expression Plasmids
Product Name:	Itgb5 (NM_001145884) Mouse Tagged ORF Clone
Tag:	TurboGFP
Symbol:	Itgb5
Synonyms:	AA475909; AI874634; beta-5; beta5; ESTM23; [b]-5; [b]5; [b]5A; [b]5B
Mammalian Cell Selection:	Neomycin
Vector:	pCMV6-AC-GFP (PS100010)
E. coli Selection:	Ampicillin (100 ug/mL)



[View online »](#)

**ORF Nucleotide Sequence:**

>MG222893 representing NM\_001145884  
 Red=Cloning site Blue=ORF Green=Tags(s)

TTTTGTAATACGACTCACTATAGGGCGGCCGGAATTCGTCGACTGGATCCGGTACCGAGGAGATCTGCC  
 GCC**CGGATCGCC**

ATGCCCGGGTGCCCGACCCCTACGCCTGTCTGCTCGGGCTCTGCGCGCTCGTTCGCGCCTCGCAG  
 GGCTCAACATATGCACTAGTGGAAGTGCCACCTCGTGTGAAGAATGCCTGTTGATCCACCCAAAATGTGC  
 CTGGTGTCCAAAGAGTACTTTGGCAATCCACGGTCCATCACCTCTCGGTGTGACCTGAAGGCAAACCTC  
 ATCCGGAATGGCTGTGAAGGTGAGATTGAGAGTCCAGCCAGCAGCACCCACGTCCTCCGGAACCTACCTC  
 TCAGCAGCAAGGGTTCAGTGCCACGGGCTCTGACGTCATCCAGATGACGCCGAGGAGATTGCAGTGAG  
 CCTCCGGCCAGGCGAGCAGACTACGTTCCAGTGCAGGTGCGCCAGGTGGAGGACTACCCTGTAGACCTG  
 TACTACCTGATGGACCTCCTCTCCATGAAGGATGACTTGGAGAACATCCGGAGCCTGGGCACCAAGC  
 TTGCCGAGGAAATGAGGAAGCTCACTAGTAACTCCGCTTAGGTTTCGGGTCTTTTGTGACAAGGACAT  
 CTCTCCTTTCTCTACACGGCACCGAGATACCAGACCAATCCGTGATTGGTTACAAGTTATCCCAAC  
 TGGCTCCCTCCTTCGGGTTCCGGCATCTGCTGCCTCTCACAGACAGAGTCGACAGCTTCAACGAGGAAG  
 TGAGGAAGCAGAGGGTGTCCCGAACCAGATGCCCCGAGGGGGGGTTTGTATGCGGTCTCCAGGCTGC  
 TGTCTGCAAGGAGAAGATCGGATGGCGAAAAGATGCTCTGCACCTGCTGGTGTTCACAACAGACGATGTG  
 CCCACATCGCACTGGATGGAAAAGTGGTGGCCTGGTCCAGCCCCACGATGGCCAGTGTACCTGAATG  
 AAGCCAATGAGTACACAGCCTCTAACAGATGGACTATCCATCGCTTGCCTTGTGGGGAGAAGCTGGC  
 AGAGAACAATATCAACCTCATTTTTGCTGTGACGAAGAACCCTATATGCTCTACAAGAATTTTACAGCC  
 CTGATACCTGGAACCACTGTGGAGATTTTGCATGGAGATTCAAAAATATTATTCACTGATTATCAATG  
 CGTACAGTAGCATCCGGGCTAAAGTGGAGCTGTCACTGTGGGATCAGCCAGAAGACCTTAACTCTTCTT  
 CACTGCCACCTGCCAAGATGGCATACTTACCCTGGTCAGAGGAAGTGTGAGGGTCTGAAGATTGGGGAC  
 ACGGCATCCTTTGAAGTGTCCGTGGAGGCTCGGAGCTGCCCGGACAGACAAGCAGCACAGCTTTTACCT  
 TGAGGCCCGTGGGCTTCCGGGACAGTCTGCAGGTGGAAGTCGCCTACAATTGCACATGCGGCTGTAGCAC  
 GGGGCTGGAGCCCAACAGTGCCAGATGCAGTGGGAATGGAACATACACCTGTGGGCTGTGCGAGTGTGAC  
 CCCGGCTACCTGGGCACTAGGTGCGAGTCCAGGAGGGGAGAACCAGAGCGGGTACCAGAACCTGTGCC  
 GGGAGGCAGAGGGCAAGCCTCTGTGCAGCGGGCTGGAGAGTGTAGCTGCAACCAGTGTCTCTGCTCGA  
 GAGTGAGTTCGGGAGGATCTACGGACCTTCTGCGAGTGTGACAGCTTTTCTGTGCCAGAAACAAGGGC  
 GTCCTATGCTCAGGCCATGGAGAGTGTCACTGTGGAGAATGCAAATGCCACGCAGTTACATTGGGGACA  
 ATTGTAAGTGTCAACAGACGTCAGCACATGCAGGGCCAAGGATGGGCAGATCTGCAAGTACCGAGGCCG  
 TTGTGTCTGTGGGCAAGTGCACAGACCTGGAGCCTTTGGGGAGACGTTGAGAAGTGCCCAACC  
 TGCCCGGATGCTTGCAGCTCTAAGAGAGACTGTGTGCAATGCTTGTACTTACCAGGGGAAACCTGACA  
 ACCAGACCTGCCACCACAGTGCAAAGATGAGGTGATCACGTGGGTAGACACCATCGTCAAAGATGACCA  
 GGAGGCTGTGCTTTGCTTCTACAAAAGTCTAAGGACTGCGTTATGATGTTTACAGTACACAGAACTGCC  
 AATGGGAGGTCCAACCTTACGGTCTCCGGGAGCCAGAATGTGGAAGTGGCCCAATGCCATGACCATCC  
 TGCTGGCTGTGGTTGGCAGCATCCTCCTGATTGGGATGGCACTCCTGGCCATCTGGAAGCTGCTCGTCA  
 CATCCACGACCCGAGAGTTTGGCAAGTTCAAAGTGAAGCTCCAGGGCCCGTTATGAAATGGCCTCA  
 AACCCCTGTACAGAAAGCCATCTCCACACACTGTCGATTTGCGCTTCAACAAGTTCAACAAATCCT  
 ACAATGGCTCAGTGGAC

**ACGCGT**ACGCGGCCGCTCGAG - GFP Tag - GTTTAA

**Protein Sequence:** >MG222893 representing NM\_001145884  
 Red=Cloning site Green=Tags(s)

```

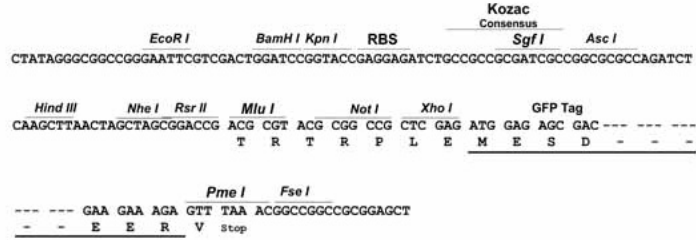
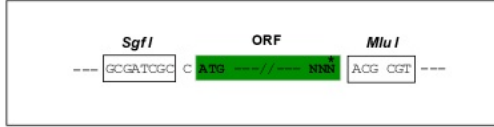
MPRVPATLYACLLGLCALVPRLAGLNICTSGSATSCEECLLIHPKCAWCSKEYFGNPRSITSRCDLKANL
IRNGCEGEIESPASSTHVLRLNPLSSKGSSATGSDVIQMPQEIAVSLRPGEQTTFLQVRQVEDYPVDL
YYLMDLSLSMKDDLENIRSLGTLAEEMRKLTSNFRLGFGSFVDKDISPF SYTAPRYQTNPCIGYKLFPN
CVPSFGFRHLLPLTDRVDSFNEEVRKQVSRNRDAPEGGFDAVLQAAVCKEKIGWRKDALHLLVFTDDV
PHIALDGKLGGLVQPHDQCHLNEANEYTASNQMDYPSLALLGEKLAENNINLIFAVTKNHMYLYKNFTA
LIPGTTVEILHGDSKNIIQLIINAYSSIRAKVELSVWDQPEDLNLFFATCQDGISYPPGQRKCEGLKIGD
TASFEVSVEARSCPGRQAAQSFTLRPVGFRDSLQVEVAYNCTCGCSTGLEPNSARCSNGTYTCGLCECD
PGYLGTRCECQEGENQSGYQNLCREAEGKPLCSGRGECSCNQCSCFESEFGRIYGPFCEDSFSCARNKG
VLCSGHGECHECKCHAGYIGDNCNCSTDVSTCRAKDGQICSDRGRCVCGQCQCTEPGAFGETCEKCPT
CPDACSSKRDCVECLLLHQGKPDNQTCHHQCKDEVITWVDTIVKDDQEAVLCFYKTAKDCVMMFSYTELP
NGRSNLTVLREPECGSAPNAMTILLAVVGSILLIGMALLAIWKLLVTIHDRREFAKFQSERSRARYEMAS
NPLYRKPISTHTVDFAFNKFNKSYNGSVD
  
```

TRTRPLE - GFP Tag - V

**Restriction Sites:** Sgfl-Mlul

## Cloning Scheme:

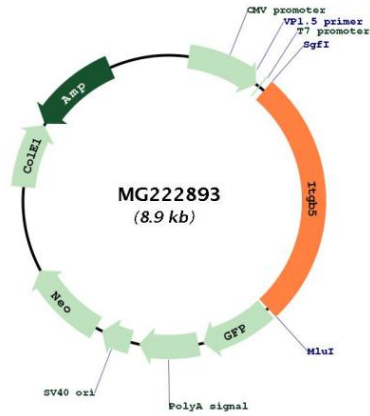
Cloning sites used for ORF Shutting:



ACCN: NM\_001145884  
 ORF Size: 2397 bp

<b>OTI Disclaimer:</b>	<p>Due to the inherent nature of this plasmid, standard methods to replicate additional amounts of DNA in E. coli are highly likely to result in mutations and/or rearrangements. Therefore, OriGene does not guarantee the capability to replicate this plasmid DNA. Additional amounts of DNA can be purchased from OriGene with batch-specific, full-sequence verification at a reduced cost. Please contact our customer care team at <a href="mailto:custsupport@origene.com">custsupport@origene.com</a> or by calling 301.340.3188 option 3 for pricing and delivery.</p> <p>The molecular sequence of this clone aligns with the gene accession number as a point of reference only. However, individual transcript sequences of the same gene can differ through naturally occurring variations (e.g. polymorphisms), each with its own valid existence. This clone is substantially in agreement with the reference, but a complete review of all prevailing variants is recommended prior to use. <a href="#">More info</a></p>
<b>OTI Annotation:</b>	<p>This clone was engineered to express the complete ORF with an expression tag. Expression varies depending on the nature of the gene.</p>
<b>Components:</b>	<p>The ORF clone is ion-exchange column purified and shipped in a 2D barcoded Matrix tube containing 10ug of transfection-ready, dried plasmid DNA (reconstitute with 100 ul of water).</p>
<b>Reconstitution Method:</b>	<ol style="list-style-type: none"><li>1. Centrifuge at 5,000xg for 5min.</li><li>2. Carefully open the tube and add 100ul of sterile water to dissolve the DNA.</li><li>3. Close the tube and incubate for 10 minutes at room temperature.</li><li>4. Briefly vortex the tube and then do a quick spin (less than 5000xg) to concentrate the liquid at the bottom.</li><li>5. Store the suspended plasmid at -20°C. The DNA is stable for at least one year from date of shipping when stored at -20°C.</li></ol>
<b>RefSeq:</b>	<p><a href="#">NM_001145884.1</a>, <a href="#">NP_001139356.1</a></p>
<b>RefSeq Size:</b>	<p>3304 bp</p>
<b>RefSeq ORF:</b>	<p>2400 bp</p>
<b>Locus ID:</b>	<p>16419</p>
<b>UniProt ID:</b>	<p><a href="#">O70309</a></p>
<b>Cytogenetics:</b>	<p>16 B3</p>
<b>Gene Summary:</b>	<p>Integrin alpha-V/beta-5 (ITGAV:ITGB5) is a receptor for fibronectin. It recognizes the sequence R-G-D in its ligand.[UniProtKB/Swiss-Prot Function]</p>

Product images:



Circular map for MG222893