

Product datasheet for **MG222888**

Itgb5 (NM_010580) Mouse Tagged ORF Clone

Product data:

Product Type:	Expression Plasmids
Product Name:	Itgb5 (NM_010580) Mouse Tagged ORF Clone
Tag:	TurboGFP
Symbol:	Itgb5
Synonyms:	AA475909; AI874634; beta-5; beta5; ESTM23; [b]-5; [b]5; [b]5A; [b]5B
Mammalian Cell Selection:	Neomycin
Vector:	pCMV6-AC-GFP (PS100010)
E. coli Selection:	Ampicillin (100 ug/mL)



[View online »](#)

ORF Nucleotide
Sequence:

>MG222888 representing NM_010580
Red=Cloning site Blue=ORF Green=Tags(s)

TTTTGTAATACGACTCACTATAGGGCGGCCGGGAATTCGTCGACTGGATCCGGTACCGAGGAGATCTGCC
GCC**CGGATCGCC**

ATGCCCGGGTGCCCGGACCCCTACGCCTGTCTGCTCGGGCTCTGCGCGCTCGTTCGCGCCTCGCAG
GGCTCAACATATGCACTAGTGGAAGTGCCACCTCGTGTGAAGAATGCCTGTTGATCCACCCAAAATGTGC
CTGGTGTCCAAAGAGTACTTTGGCAATCCACGGTCCATCACCTCTCGGTGTGACCTGAAGGCAAACCTC
ATCCGGAATGGCTGTGAAGGTGAGATTGAGAGTCCAGCCAGCAGCACCCACGTCCTCCGGAACCTACCTC
TCAGCAGCAAGGGTTCCAGTGCCACGGGCTCTGACGTCATCCAGATGACGCCGAGGAGATTGCAGTGAG
CCTCCGGCCAGGCGAGCAGACTACGTTCCAGTGCAGGTGCGCCAGGTGGAGGACTACCCTGTAGACCTG
TACTACCTGATGGACCTCCTCTCCATGAAGGATGACTTGGAGAACATCCGGAGCCTGGGCACCAAGC
TTGCCGAGGAAAAGGGAAGCTCACTAGTAACTCCGCTTAGGTTTCGGGTCTTTTGTGACAAGGACAT
CTCTCCTTTCTCCTACACGGCACCGAGATACCAGACCAATCCGCTGATTGGTTACAAGTTATCCCAAC
TGCGTCCCTCCTTCGGGTTCCGGCATCTGCTGCCTCTCACAGACAGAGTCGACAGCTTCAACGAGGAAG
TGAGGAAGCAGAGGGTGTCCCGAAACCGAGATGCCCCGAGGGGGGGTTTGTATGCGGTCTCCAGGCTGC
TGTCTGCAAGGAGAAGATCGGATGGCGAAAAGATGCTCTGCACCTGCTGGTGTTCACAACAGACGATGTG
CCCCACATCGCACTGGATGGAAAAGTGGGTGGCCTGGTCCAGCCCCACGATGGCCAGTGTACCTGAATG
AAGCCAATGAGTACACAGCCTCTAACAGATGGACTATCCATCGCTTGCCTTGTGGGGAGAAGCTGGC
AGAGAACAATATCAACCTCATTTTTGCTGTGACGAAGAACCCTATATGCTCTACAAGAATTTTACAGCC
CTGATACCTGGAACCACTGTGGAGATTTTGCATGGAGATTCAAAAATATTATTCAACTGATTATCAATG
CGTACAGTAGCATCCGGGCTAAAGTGGAGCTGTCACTGTGGGATCAGCCAGAAGACCTTAATCTCTTCTT
CACTGCCACCTGCCAAGATGGCATATCTTACCCTGGTCAGAGGAAGTGTGAGGGTCTGAAGATTGGGGAC
ACGGCATCCTTTGAAGTGTCCGTGGAGGCTCGGAGCTGCCCGGAGACAAGCAGCACAGCTTTTACCT
TGAGGCCCGTGGGCTTCCGGGACAGTCTGCAGGTGGAAGTCGCCTACAATTGCACATGCGCTGTAGCAC
GGGGCTGGAGCCCAACAGTGCAGATGCAGTGGGAATGGAACATACACCTGTGGGCTGTGCGAGTGTGAC
CCCGGCTACCTGGGCACTAGGTGCGAGTGCAGGAGGGGAGAACCAGAGCGGGTACCAGAACCTGTGCC
GGGAGGCAGAGGGCAAGCCTCTGTGCAGCGGGCTGGAGAGTGTAGCTGCAACCAGTGTCTCTGCTCGA
GAGTGAGTTCGGGAGGATCTACGGACCTTCTGCGAGTGTGACAGCTTTTCTGTGCCAGAAACAAGGGC
GTCCTATGCTCAGGCCATGGAGAGTGTCACTGTGGAGAATGCAAATGCCACGCAGTTACATTGGGGACA
ATTGTAAGTGTCAACAGACGTCAGCACATGCAGGGCCAAGGATGGGCAGATCTGCAAGTACCGAGGCCG
TTGTGTCTGTGGCAGTGCCAGTGCACAGAGCCTGGAGCCTTTGGGGAGACGTGTGAGAAGTGCCCAACC
TGCCCGGATGCTTGCAGCTCTAAGAGAGACTGTGTGCAATGCTTGTACTTACCAGGGGAAACCTGACA
ACCAGACCTGCCACCACCACTGCAAGATGAGGTGATCACGTGGGTAGACACCATCGTCAAAGATGACCA
GGAGGCTGTGCTTTGCTTCTACAAAAGTCTAAGGACTGCGTTATGATGTTTACAGTACACAGAACTGCC
AATGGGAGGTCCAACCTGACGGTCTCCGGGAGCCAGAATGTGGAAGTGGCCCAATGCCATGACCATCC
TGCTGGCTGTGGTTGGCAGCATCCTCCTGATTGGGATGGCACTCCTGGCCATCTGGAAGCTGCTCGTCA
CATCCACGACCCGAGAGTTTGGCAAGTTCAAAAGCCTCAAACCCCTGTACAGAAAGCCCATCTCCAC
ACACACTGTCGATTTTCGCTTCAACAAGTTCACAATAATCCTACAATGGCTCAGTGGACTGAGGCTCCTGG
ATGGCTGGAGGGGACTAAGGATGAAGACTCTGGCGTGCCTTGGACTTCTGGACCATTGCTCACGC

ACCGTACGCGGCCGCTCGAG – GFP Tag – GTTTAA

Protein Sequence: >MG222888 representing NM_010580
Red=Cloning site Green=Tags(s)

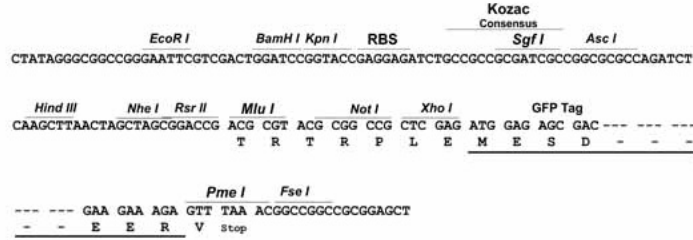
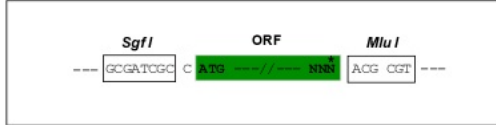
MPRVPATLYACLLGLCALVPRLAGLNICTSGSATSCEECLLIHPKCAWCSKEYFGNPRSITSRCDLKANL
IRNGCEGEIESPASSTHVLRLNPLSSKGSSATGSDVIQMPQEIAVSLRPGEQTTFQLQVRQVEDYPVDL
YYLMDLSLSMKDDLENIRSLGTKLAEEMRKLTSNFRLGFGSFVDKDISPF SYTAPRYQTNPCIGYKLFPN
CVPSFGFRHLLPLTDRVDSFNEEVRKQVSRNRDAPEGGFDAVLQAAVCKEKIGWRKDALHLLVFTTDDV
PHIALDGKLGGLVQPHDQCHLNEANEYASNQMDYPSLALLGEKLAENNINLIFAVTKNHMYLYKNFTA
LIPGTTVEILHGDSKNIIQLIINAYSSIRAKVELSVWDQPEDLNLFFATCQDGISYPGQRKCEGLKIGD
TASFEVSEARSCPRQAAQSFTLRPVGFRDSLQVEVAYNCTCGCSTGLEPNSARCSNGTYTCGLCECD
PGYLGTRCECQEGENQSGYQNLCREAEGKPLCSGRGECSCNQCSCFESEFGRIYGPFCEDSFSCARNKG
VLCSGHGECHECKCHAGYIGDNCNCSTDVSTCRAKDGQICSDRGRCVCGQCQCTEPGAFGETCEKCPT
CPDACSSKRDCVECLLLHQGKPDNQTCHHQCKDEVITWVDTIVKDDQEAVLCFYKTAKDCVMMFSYTELP
NGRSNLTVLREPECGSAPNAMTILLAVVGSILLIGMALLAIWKLVTIHDRREFAKFQSLKPPVQKAHLH
THCRFRLQQVQILQWLSGLRLLDGWRGKDEDSGVPWTSWTICSR

TRTRPLE - GFP Tag - V

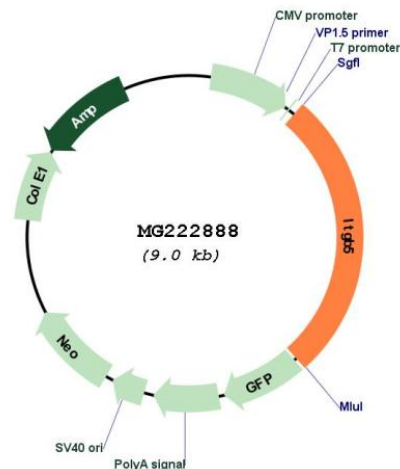
Restriction Sites: Sgfl-MluI

Cloning Scheme:

Cloning sites used for ORF Shutting:



Plasmid Map:



ACCN: NM_010580

ORF Size: 2448 bp

OTI Disclaimer: The molecular sequence of this clone aligns with the gene accession number as a point of reference only. However, individual transcript sequences of the same gene can differ through naturally occurring variations (e.g. polymorphisms), each with its own valid existence. This clone is substantially in agreement with the reference, but a complete review of all prevailing variants is recommended prior to use. [More info](#)

OTI Annotation: This clone was engineered to express the complete ORF with an expression tag. Expression varies depending on the nature of the gene.

Components: The ORF clone is ion-exchange column purified and shipped in a 2D barcoded Matrix tube containing 10ug of transfection-ready, dried plasmid DNA (reconstitute with 100 ul of water).

Reconstitution Method:

1. Centrifuge at 5,000xg for 5min.
2. Carefully open the tube and add 100ul of sterile water to dissolve the DNA.
3. Close the tube and incubate for 10 minutes at room temperature.
4. Briefly vortex the tube and then do a quick spin (less than 5000xg) to concentrate the liquid at the bottom.
5. Store the suspended plasmid at -20°C. The DNA is stable for at least one year from date of shipping when stored at -20°C.

RefSeq: [NM_010580.2](#), [NP_034710.2](#)

RefSeq Size: 3275 bp

RefSeq ORF: 2451 bp

Locus ID: 16419

UniProt ID: [O70309](#)

Cytogenetics: 16 B3

Gene Summary: Integrin alpha-V/beta-5 (ITGAV:ITGB5) is a receptor for fibronectin. It recognizes the sequence R-G-D in its ligand.[UniProtKB/Swiss-Prot Function]