

Product datasheet for **MG222864**

Tfpi (NM_001177319) Mouse Tagged ORF Clone

Product data:

Product Type: Expression Plasmids
Product Name: Tfpi (NM_001177319) Mouse Tagged ORF Clone
Tag: TurboGFP
Symbol: Tfpi
Synonyms: A630013F22Rik; AW552122; EPI; LACI
Mammalian Cell Selection: Neomycin
Vector: pCMV6-AC-GFP (PS100010)
E. coli Selection: Ampicillin (100 ug/mL)
ORF Nucleotide Sequence: >MG222864 representing NM_001177319
 Red=Cloning site Blue=ORF Green=Tags(s)

TTTTGTAATACGACTCACTATAGGGCGGCCGGAATTCGTCGACTGGATCCGGTACCGAGGAGATCTGCC
 GCC**CGATCGCC**

ATGACTTACAAAATGAAGAAAGAACATGCCTTTTGGGCCACTGTGTGTCTGTTGCTTAGCCTTGTTCCCG
 AGTTTCTTAATGCTCTGTCTGAGGAAGCTGATGACACAGATTCTGAGCTGGGTCAATGAAACCGCTACA
 TACATTTGTGCAATGAAGGCAGATGATGGTCCATGCAAAGCAATGATAAGGAGTATTTTTTCAATATG
 TATACTCATCAATGTGAAGAATTTATACGGGGGATGTGAAGGGAACGAGAACCGATTTGATACCTGG
 AAGAGTGAAGAAAACATGCATACCAGTTATGAGAAGACAGCTGTGAAGGCAGCATCTGGAGCAGAAAG
 GCCAGATTTCTGCTTCTTGAAGAGGACCCGGGACTCTGCCGAGGTTACATGAAGAGGTATCTTTATAAC
 AACCAGACAAAGCAGTGTGAACGATTCTGTACGGTGGCTGCCTGGGCAACCGCAACAACCTTTGAAACTT
 TGGATGAGTGCAAGAAGATCTGTGAGAATCCAGTCCACTCCCCTTCCCCAGTGAATGAGGTACAGATGAG
 TGACTACGTAAGTATGAAATACTGTAAGTATCGCAGTACTGTAATAACATCGTGGTCCCCAGTCT
 CCCAAAGTGCCAGGCGTCGGCTGCCTTGGTACTGTATCACCTTATGATATTTTGAAAAAATCATCT
 TTGGT

ACGCGTACGCGGCCGCTCGAG - GFP Tag - GTTTAA



[View online »](#)

Protein Sequence: >MG222864 representing NM_001177319
 Red=Cloning site Green=Tags(s)

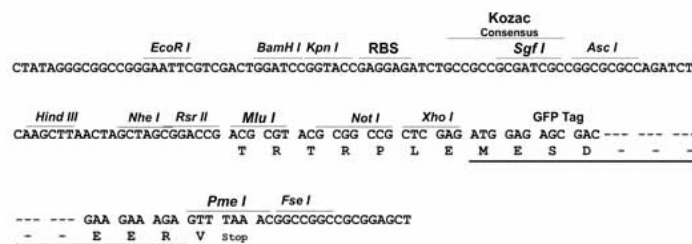
MTYKMKKEHAFWATVCLLLSLVPEFLNALSEEADDTDSELGSMKPLHTFCAMKADDGPKAMIRSYFFNM
 YTHQCEEFYGGCEGNERFDTLEECKKTCIPGYEKTAVKAASGAERPDFCFLEEDPGLCRGYMKRYLYN
 NQTKQCFERFVGGCLGNRNNFETLDECKKICENPVHSPSPVNEVQMSDYVTDGNTVTDTRSTVNNIIVPQS
 PKVPRRRAALVLYHLYDILKLIIFG

TRTRPLE - GFP Tag - V

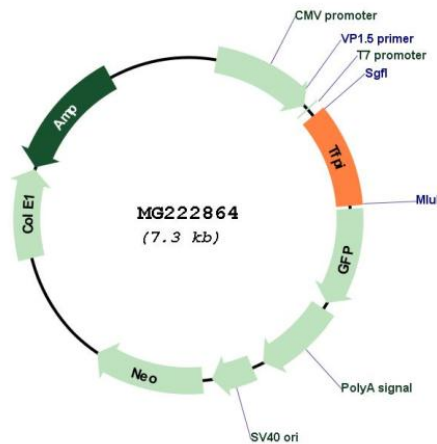
Restriction Sites: SgfI-MluI

Cloning Scheme:

Cloning sites used for ORF Shutting:



Plasmid Map:



ACCN: NM_001177319

ORF Size: 705 bp

OTI Disclaimer:	The molecular sequence of this clone aligns with the gene accession number as a point of reference only. However, individual transcript sequences of the same gene can differ through naturally occurring variations (e.g. polymorphisms), each with its own valid existence. This clone is substantially in agreement with the reference, but a complete review of all prevailing variants is recommended prior to use. More info
OTI Annotation:	This clone was engineered to express the complete ORF with an expression tag. Expression varies depending on the nature of the gene.
Components:	The ORF clone is ion-exchange column purified and shipped in a 2D barcoded Matrix tube containing 10ug of transfection-ready, dried plasmid DNA (reconstitute with 100 ul of water).
Reconstitution Method:	<ol style="list-style-type: none">1. Centrifuge at 5,000xg for 5min.2. Carefully open the tube and add 100ul of sterile water to dissolve the DNA.3. Close the tube and incubate for 10 minutes at room temperature.4. Briefly vortex the tube and then do a quick spin (less than 5000xg) to concentrate the liquid at the bottom.5. Store the suspended plasmid at -20°C. The DNA is stable for at least one year from date of shipping when stored at -20°C.
RefSeq:	NM_001177319.1 , NP_001170790.1
RefSeq Size:	3027 bp
RefSeq ORF:	708 bp
Locus ID:	21788
Cytogenetics:	2 D
Gene Summary:	Inhibits factor X (X(a)) directly and, in a Xa-dependent way, inhibits VIIa/tissue factor activity, presumably by forming a quaternary Xa/LACI/VIIa/TF complex. It possesses an antithrombotic action and also the ability to associate with lipoproteins in plasma (By similarity). [UniProtKB/Swiss-Prot Function]