

Product datasheet for **MG222860**

Cacna2d4 (NM_001033382) Mouse Tagged ORF Clone

Product data:

Product Type:	Expression Plasmids
Product Name:	Cacna2d4 (NM_001033382) Mouse Tagged ORF Clone
Tag:	TurboGFP
Symbol:	Cacna2d4
Synonyms:	5730412N02Rik; BE686333
Mammalian Cell Selection:	Neomycin
Vector:	pCMV6-AC-GFP (PS100010)
E. coli Selection:	Ampicillin (100 ug/mL)
ORF Nucleotide Sequence:	>MG222860 representing NM_001033382 Red=Cloning site Blue=ORF Green=Tags(s)

TTTTGTAATACGACTCACTATAGGGCGGCCGGAATTCGTCGACTGGATCCGGTACCGAGGAGATCTGCC
GCC**CGATCGCC**

ATGCCAGGAGTTCCTGTGGCAGCAAGTTATCTCCAGCAGGGGCTGTCTCTCTCCCCTGCCCTCCC
CCAGTGGGAACACCATGGCAAGATGCCCATGCTGTCTCTAGCCACAACCAAGACCACAGTGGACGGTG
GACAGCAGTGTGGACCTCCCTGTGGAAGACGCCAATCATCTGTGGCTGTGCTCTCGGACACCTCCCTG
CCTACCGTGAGGGGCCAGACCAGTTCCTCTGAAAACAGTGAAGCTGTGGGCCGATACCTTCGGCAGGA
ATCTGTACAACACGGTGACCAGATATTCAGGCTCCCTCCTGCTGCAGAAGAAGTACAAGGATGCAGAACC
CAGTCTGAAGATCAAAGAGGTGGATGGCTTGGAGCTGGTGAAGAAGTTCTCGGAGGACATGGAGACCATG
CTTCGGAGGAAAGTCGAGGCTGTTGAGAGCCTGGTGGAGGCCGCTGAGGAGGCTGACCTGAATCATGAGT
TCAATGCATCTCTGGTGTAACTACTACAACCTCGGTAATCAATGAGAAGGATGACAAGGGCAACTA
CGTGGAGCTGGGAGCTGAGTTTCTCTCGAGTCCGACGCGCACTTCAGCAACCTGAGGGTGAATGTCTCC
ATGAGCAGCGTTCAACTGCCACCAACGTGTACAACAAAGACCCAGACATTTAAATGGCGTGTATATGT
CCGAAGCCCTGAACCCGTGTTTGTGGAGAAGTTCAGAGAGACCCTACATTGACATGGCAGTATTTCCG
CAGCTCAACTGGGTTCTTCAGGATCTATCCAGGAATAAAGTGGATGCCTGATGAAAACGGAGTCATCGCC
TTCGACTGCAGAAACCGTGGCTGGTACATACAAGCTGCCACATCTCCAAAGACATCGTAATTCTGGTGG
ACATTAGCGGCAGCATGAAGGGGCTGAGGATGGCTATCGCCAAGCACACCATTACCACCATATTGGACAC
CCTGGGAGAGAACGACTTCGTGAACATCATCGCGTACAATGACTACGTCCTACTACATTGAGCCCTGCTTC
AAAGGCATCCTTGTCCAAGCAGATCGAGACAACCGAGAGCATTTCAAGCAGTTGGTGGATGAGCTGATGG
TCAAAGGTGTGGGTGTCGTGAGTCAAGCTTAATTGAAGCTTTCGAGATCCTGAAACAGTTCCAAGAGTC
CAAACAAGGAAGTCTCTGCAACCCAGGCCATCATGCTTATACCGATGGGGCTGTGGAAGACTATGAGCCC
GTGTTTGAGACCTATAACTGGCCAGACCGAAAGGTCAGGTTTTCACCTTACCTTATTGGAAGAGAAGTGA
CTTTCGCTGACCGCATGAAGTGGATCGCCTGCAACAATAAAGGCTACTACACACAGATCTCCACACTGCC
GGATGCGCAGGAGAGCGTATGGAGTACCTGCATGTGCTTAGCCGCCCATGGTATCAACCATGACCAC



[View online »](#)

GACATCATCTGGACAGAGGCTTACATGGACAGCCGGCTTTCACATCAGAGGCACAGAGCCTGATGCTCC
TCACCACAGTGGCCATGCCTGTCTTCAGCAAAAAGAATGAAACAAGATCCCATGGCATTCTCCTGGGTGT
AGTGGGCTCTGACGTGACCTAAGAGAGCTCATGAAGCTGGCACCCCGATATAAGCTTGGGGTGCATGGC
TATGCCTTCTTGAACACTAACATGGCTACATCCTCTCTCATCCTGACCTCCGACCTTTGTACAGAGAAG
GCAAGAAGCTGAGACCAAAACCAACTACAACAGTGTGGACCTCTCAGAAGTGGAGTGGGAGGACCAAGC
TGAAATTCTGAGGACCGCCATGATCAATGGGAAAACCGGTCTCACTCCATGGACGTGAAGTGCCACTG
GACAAAGGGAAGCGAGTTCTATTCTGACCAATGACTACTTCTTCACAGACATCAGTGACACACCTTTCA
GCCTGGGAGTGGTGTCTACCAGAGGTCTGGAGAATACATCCTCCTGGGGAACACATCTGTGGAAGAAGG
CCTGCACGACTTGCTTATCCGGATCTGACCCTGGCCAGTACTGGATCTACTGTATCACAGATATCGAC
CCGGACCACCGGAAACTCAGCCAACTGGAAGCTGTGGTTCGTTTCTGACAGGGGTGGATCCAGACCTGG
AGTGTGACGAGGAACTGGTGCGGGAGGTGCTGTTTGTGCGGTGGTAACCGCCCCATGGAAGCCTATTG
GACAGCACTGGCACTCAACATCTCTGAAGAGTCAAGAGCTGGCGTGGATGTGGCCTTCTGGGAACCCGG
GCTGGCCTTCTAAGAAGAAGCTTGTTCTGAGGCTCCGAGAAAGTCTCTGACAGGAAGTCTGACCCCTG
AAGATGAAGCCAGTATTTTTACCATGGACCACTCCCGCTGTGGTATCGCCAGGCCTCTGAGCAGCCCC
CGGCAGCTTTGTCTTCAATCTCCGCTGGGCAGAGGGACCAGATAGCCAGCAAGCCAGTGGCGGTAAAG
GCCAGCACAGCAGTAACCTGTGACCGTGGATGGGAAGACGGCCATTGCAGCAGCTGTGGGCATCCAGATGC
AAGCAGACTACCTCCAGCGCCAGTTCTGGGCAGCCATGCAGCAGTGAACGCTGTAGAGGGGCCGTGCCCT
GAAGAGCTGCGAGGACACTGATCTCGACTGCTTCGTATAGACAACAATGGCTTCGTCCTGATCTCAGAG
AGACCCCAAGAGATGGGAAGACTTCTGGGGGAAGCGGATGGTGTCTCATGAAGCAACTTCTCAGCATGG
GGGTGTTAGCCGTGTGACCATGTATGACTACCAGGCCATGTGCAAGCCCCAGATCATCACCACAGTGC
GGCCGAATCCCTGTTAGTCCCTCTCTGCCTTCTTGTGGTGGCCAGGTGGCTACTGCATGAATGTCTC
CTATTCTGTAGAGTGGAGTGCCTGGGGATCTTGGCAGGACAAAGGGTCAAGGGCCAAATCTGTCTTCC
ATCACTCCCAAGCACAAAGAAGCAGGACCTGCTGCACCCCTGTGACACAGAGTACCCAGTGTTCGTGCA
TCAGACGGCCATCCAGGAAGCCAATGGCATCATCGAGTGTGGGGGCTGCCAGAAGACATTCTGTATGCAA
CAGATTCCCCGAAGCAACCTGCTCCTGCTCGTGACAGACCGCACCTGTGACTGCAGCGCCCACTCTCCCA
TCCTCCAGGAGGCCACAGAAGTCAAATATAATGCCTCTGTCAAGTGTGACAGGATGCGCTCCAGAAAGCC
CCGGAGACGACCAGGCTCCTGCCATGCCTTCCATCCAGAGGAGAATGCCAGGACTGTGGCGGTGCTTCA
GACTCTGCCTTATCCCTCTGCTCCTGCTATCACTGGGGCCTGGCTGCTTCCACCCAGCTTCTGT
GG

ACGCGTACGCGGCCGCTCGAG - GFP Tag - GTTTAA

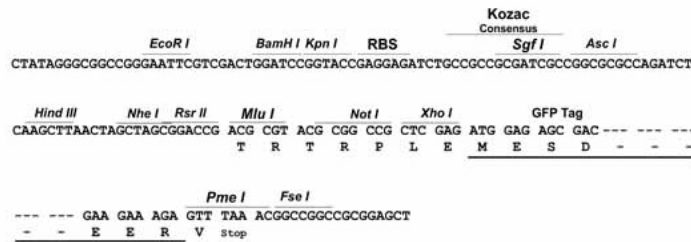
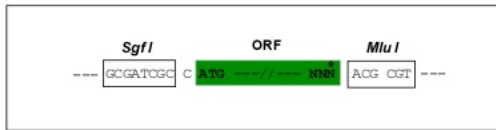
Protein Sequence: >MG222860 representing NM_001033382
 Red=Cloning site Green=Tags(s)

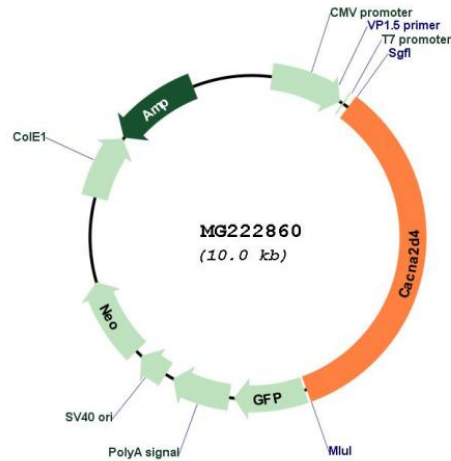
```
MPRSSCGSKLSPSRGSVLLPCPSPSGNTMARCPLSSSHNQDHSGRWTAVWTSWTKPIILWLLSDDTSL
PTVRGQTTVPLETVKLVADTFGRNL YNTVTRYSGSLLLQKQYKDAEPLKIKEVDGLELVKFFSEDMETM
LRRKVEAVESLVEAAEADLNHEFNASLVFNYYNSVLIN EKDDKGNVVELGAEFLLSDAHFSNLRVNVS
MSSVQLPTNVYKDPDILNGVYMSEALNPVVFVENFQRDPTLTWQYFGSSTGFFRIYPGIKWMPDENGVI
AFCRNRGWYIQAATSPKDIVILVDISGSMKGLRMAIAKHTITTTILDTLGENDFVNI IAYNDYVHYIEPCF
KGTLVQADRDNREHFQKLVDEL MVKGVGVVSQALIEAFEILKQFQESKQGS LCNQAIMLITDGAVEDYEP
VFETYNWPDRKVRVFTYLIGREVTFA DRMKWIACNNKGYTQISTLADAQESVMEYLHVL SRPMVINHHDH
DIIWTEAYMDSRLFTSEAQSLMLLTTVAMPVFSKKNETRSHGILLGVVGSVDVTLRELMKLAPRYKLGVHG
YAF LNTNNGYILSHPDLRPLYREGKLRPKPNYNSVDLSEVEWEDQAEILRTAMINGETGSHSMDVKVPL
DKGKRVLFLTNDYFFTDISDTPFSLGVVLTRGHGEYILLGNTSVEEGLHDL LHPDLTLASDWIYCITDID
PDHRKLSQLEAVVRFLTGVDPLECDEELVREVLFDVVTAPEAYWTALALNISESEPGVDVAF LGTR
AGLLRRSLFVGSEKVS DRKFLTPED EASIF TMDHFPLWYRQASEQPPGSFVFNLRWAEGPDS PGKPVAVR
ASTAVTVTVDGKTAIAAAVGIQMADYLQRQFWAAMQCCNAVEGPCLKSCEDTDLDCFVIDNNGFVLI SE
RPQEMGRLLGEADGALMKQLLSMGVFSRV TMYDYQAMCKPPDHHSAAESLFSPLSAFLMVARWLLHECL
LFLLESAWGSWQDKGSEAKSVFHSHKHKQDLLHPCDETEYVPV FVHQTAIQEANGIIECGGCQKTFVMQ
QIPRSNLLLLVTDRTCDCSAHSPILQEATEVKYNASVKCDRMRSQKPRRRPGSCHAFHPEENAQDCGGAS
DTLPSSPLLLSLGAWLLPPQLLW
```

TRTRPLE - GFP Tag - V

Restriction Sites: SgfI-MluI
 Cloning Scheme:

Cloning sites used for ORF Shuttling:



Plasmid Map:


ACCN: NM_001033382

ORF Size: 3432 bp

OTI Disclaimer: The molecular sequence of this clone aligns with the gene accession number as a point of reference only. However, individual transcript sequences of the same gene can differ through naturally occurring variations (e.g. polymorphisms), each with its own valid existence. This clone is substantially in agreement with the reference, but a complete review of all prevailing variants is recommended prior to use. [More info](#)

OTI Annotation: This clone was engineered to express the complete ORF with an expression tag. Expression varies depending on the nature of the gene.

Components: The ORF clone is ion-exchange column purified and shipped in a 2D barcoded Matrix tube containing 10ug of transfection-ready, dried plasmid DNA (reconstitute with 100 ul of water).

Reconstitution Method:

1. Centrifuge at 5,000xg for 5min.
2. Carefully open the tube and add 100ul of sterile water to dissolve the DNA.
3. Close the tube and incubate for 10 minutes at room temperature.
4. Briefly vortex the tube and then do a quick spin (less than 5000xg) to concentrate the liquid at the bottom.
5. Store the suspended plasmid at -20°C. The DNA is stable for at least one year from date of shipping when stored at -20°C.

RefSeq: [NM_001033382.2](#), [NP_001028554.2](#)

RefSeq Size: 5803 bp

RefSeq ORF: 3435 bp

Locus ID: 319734

UniProt ID: [Q5R1F7](#)

Cytogenetics: 6 F1

Gene Summary:

The alpha-2/delta subunit of voltage-dependent calcium channels regulates calcium current density and activation/inactivation kinetics of the calcium channel.[UniProtKB/Swiss-Prot Function]