

## Product datasheet for **MG222857**

### Chrnd (NM\_021600) Mouse Tagged ORF Clone

#### Product data:

Product Type:	Expression Plasmids
Product Name:	Chrnd (NM_021600) Mouse Tagged ORF Clone
Tag:	TurboGFP
Symbol:	Chrnd
Synonyms:	Ac; Achr; Achr-4; Acrd; L10076
Mammalian Cell Selection:	Neomycin
Vector:	pCMV6-AC-GFP (PS100010)
E. coli Selection:	Ampicillin (100 ug/mL)



[View online »](#)

**ORF Nucleotide Sequence:**

>MG222857 representing NM\_021600  
 Red=Cloning site Blue=ORF Green=Tags(s)

TTTTGTAATACGACTCACTATAGGGCGGCCGGGAATTCGTCGACTGGATCCGGTACCGAGGAGATCTGCC  
 GCC**CGGATCGCC**

ATGGCAGGGCCTGTGCTCACACTGGGGCTGCTGGCTGCCCTTGTGTGTGCCCTCCAGGCAGTTGGG  
 GCCTGAATGAGGAACAAAGGCTGATCCAGCACCTATTCAATGAGAAGGGCTACGACAAAGACCTGCGGCC  
 GGTGGCTCGAAAGGAGGACAAAGTGGATGTCGCCCTAAGTCTCACCTCTCCAACCTCATCTCCCTGAAA  
 GAAGTGGAGGAGACCCTACCACCAACGTGTGGATAGATCATGCCTGGTAGACAGCCGTCTACAGTGGG  
 ATGCCAACGACTTCGGGAACATCACTGTCTGCGCCTGCCCTGACATGGTGTGGCTACCAGAGATTGT  
 ACTGGAGAACAACATGATGGCTCGTCCAGATTTCTTATGCCTGCAATGTGCTTGTCTATGACTCGGGC  
 TATGTGACCTGGCTGCCGCCGCCATCTCCGCTCCTCCTGCCCATCTCAGTCACCTACTTCCCTTTCG  
 ACTGGCAGAACTGCTCCCTCAAATTCAGTTCACCAAGTATACAGCAAGGAGATCACACTTAGCCTGAA  
 GCAGGAGGAGAAAACAACCGCTTACCCCATCGAGTGGATCATATTGACCCTGAAGGTTTCACAGAG  
 AACGGTGAGTGGGAGATAGTGCATCGGGCAGCCAAAGCTCAATGTGGACCCAGTGTCCCGATGGACAGCA  
 CCAACCACCAAGATGTCACCTTCTACCTTATCATCCGCCCAAGCCCCTTCTACATCATCAACATTCT  
 GGTACCCTGCGTGCTCATCTCCTTCATGATCAACCTAGTCTTCTACCTGCCAGGCGACTGTGGAGAGAAG  
 ACCTCCGTGGCCATCTCAGTGCTCCTGGCCAACTGTCTTCTGCTGCTTATCTCCAAGAGGCTGCCGG  
 CCACTTCCATGGCCATCCCCTTGGTAGGCAAGTTCCTGCTTTTCGGCATGGTGTGGTACCATGGTGGT  
 GGTGATCTGTGTCATCGTACTGAACATCCACTCCGGACGCCAGCACCCATGTGCTGTCTGAGGGAGTC  
 AAGAAGTCTTCTGGAGACCCTGCCAAGCTCCTGCACATGTCCCGCCAGCAGAGGAAGACCCAGGCC  
 CCAGGGCTCTCATCCGGAGAAGCAGCTCTCTGGGATACATCTGCAAAGCAGAGGAGTATTCTCACTTAA  
 GTCCCGCAGTGACCTCATGTTTGAAGAAGCAATCAGAGCGGCATGGGCTGGCCCGCGCCTACCACAGCC  
 CGCAGGCCTCCAGCAAGCTCTGAGCAGGTCCAACAGGAGCTTCAATGAGATGAAGCCAGCTGTGGATG  
 GGGCAAATTCATCGTCAACCATATGAGAGACAAAACAGTTACAATGAGGAGAAGGACAACCTGGAACCA  
 GGTGGCCCGCACAGTGGACCGTCTCTGCCTGTTTGTGGTACACCCGTCATGGTGGTGGGCACAGCCTGG  
 ATCTTCTGCAGGGTGTCTACAACCAGCCCCACTCCAGCCTTCCCTGGGGACCCCTTCTCCTATAGCG  
 AACAGGACAAGCGCTTCATC

**ACGCGTACGCGGCCGCTCGAG** - GFP Tag - GTTTAA

**Protein Sequence:**

>MG222857 representing NM\_021600  
 Red=Cloning site Green=Tags(s)

MAGPVLTLGLLAALVVCALPGSWGLNEEQRLIQHLFNEKGYDKDLRPVARKEDKVDVALSLTSLNLSLK  
 EVEETLTTNVWIDHAWVDSRLQWDANDFGNITVLRLLPPDMVWLPEIVLENNNDGSFQISYACNVLYVDSG  
 YVTWLPPIAIFRSSCPISVTYFPFDWQNCSLKFSSLYTAKEITLSLKQEEENRSYPIEWIIDPEGFTE  
 NGEWEIVHRAAKLNVDPSVPMDSSTNHQDVTFYLIIRRKPLFYIINILVPCVLISFMINLVFYLPGDCGK  
 TSVAISVLLAQSVFLLLSKRLPATSMIPLVGKFLFVGMVLTVMVVVICVIVLNIHFRTPSTHVLSEGV  
 KKFLETLPKLLHMSRPAEEDPGPRALIRRSSLGYICKAEYFSLKSRSDLMFEKQSERHGLARRLTTA  
 RRPPASSEVQVQELFNEMKPAVDGANFIVNHMRDQNSYNEEKDNWNQVARTVDRLCLFVVTVMVVGTAW  
 IFLQGVYNQPPLQPFPGDPFSYSEQDKRFI

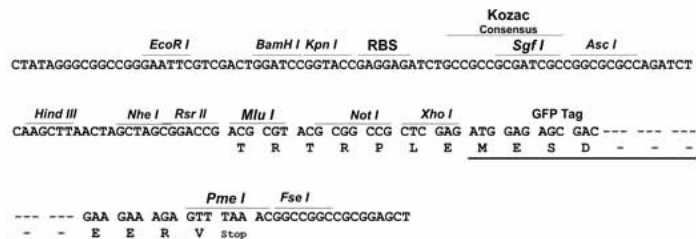
**TRTRPLE** - GFP Tag - V

**Restriction Sites:**

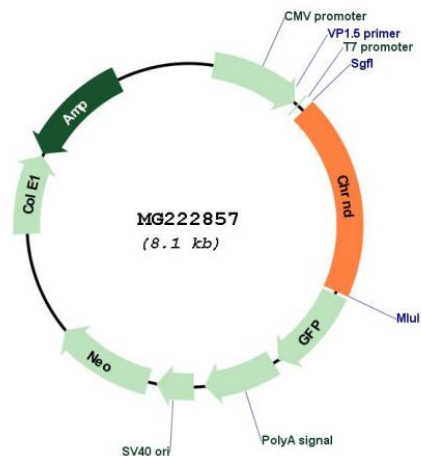
Sgfl-MluI

Cloning Scheme:

Cloning sites used for ORF Shutting:



Plasmid Map:



<b>ACCN:</b>	NM_021600
<b>ORF Size:</b>	1560 bp
<b>OTI Disclaimer:</b>	The molecular sequence of this clone aligns with the gene accession number as a point of reference only. However, individual transcript sequences of the same gene can differ through naturally occurring variations (e.g. polymorphisms), each with its own valid existence. This clone is substantially in agreement with the reference, but a complete review of all prevailing variants is recommended prior to use. <a href="#">More info</a>
<b>OTI Annotation:</b>	This clone was engineered to express the complete ORF with an expression tag. Expression varies depending on the nature of the gene.
<b>Components:</b>	The ORF clone is ion-exchange column purified and shipped in a 2D barcoded Matrix tube containing 10ug of transfection-ready, dried plasmid DNA (reconstitute with 100 ul of water).
<b>Reconstitution Method:</b>	<ol style="list-style-type: none"><li>1. Centrifuge at 5,000xg for 5min.</li><li>2. Carefully open the tube and add 100ul of sterile water to dissolve the DNA.</li><li>3. Close the tube and incubate for 10 minutes at room temperature.</li><li>4. Briefly vortex the tube and then do a quick spin (less than 5000xg) to concentrate the liquid at the bottom.</li><li>5. Store the suspended plasmid at -20°C. The DNA is stable for at least one year from date of shipping when stored at -20°C.</li></ol>
<b>RefSeq:</b>	<a href="#">NM_021600.3</a> , <a href="#">NP_067611.2</a>
<b>RefSeq Size:</b>	2948 bp
<b>RefSeq ORF:</b>	1563 bp
<b>Locus ID:</b>	11447
<b>UniProt ID:</b>	<a href="#">P02716</a>
<b>Cytogenetics:</b>	1 44.07 cM
<b>Gene Summary:</b>	This gene encodes the delta subunit of the muscle-derived nicotinic acetylcholine receptor, a pentameric neurotransmitter receptor and member of the ligand-gated ion channel superfamily. The delta subunit together with the alpha subunit forms the ligand-binding site. [provided by RefSeq, Nov 2012]