

Product datasheet for **MG222851**

Abcd3 (NM_008991) Mouse Tagged ORF Clone

Product data:

Product Type:	Expression Plasmids
Product Name:	Abcd3 (NM_008991) Mouse Tagged ORF Clone
Tag:	TurboGFP
Symbol:	Abcd3
Synonyms:	AI313901; AU018866; AW146054; PMP; PMP68; PMP70; Pxm; Pxmp1
Mammalian Cell Selection:	Neomycin
Vector:	pCMV6-AC-GFP (PS100010)
E. coli Selection:	Ampicillin (100 ug/mL)



[View online »](#)

ORF Nucleotide
Sequence:

>MG222851 representing NM_008991
Red=Cloning site Blue=ORF Green=Tags(s)

TTTTGTAATACGACTCACTATAGGGCGGCCGGGAATTCGTCGACTGGATCCGGTACCGAGGAGATCTGCC
GCC**CGCATCGCC**

ATGGCGGCCCTTCAGCAAGTACTTGACGGCACGGAACACCTCGCTGGCGGGGGCCGCGTTCCTGCTGCTCT
GCCTACTCCATAAGCGGGTTCGCGCCCTCGGCCTGCACGGTAAGAAAAGTGGAAAACCGCCATTACAGAA
TAATGAGAAAAGGAAAAGAGAGCGAGCTGTGGTGGACAAAGTGTTCATCAAGGCTCTCACAGATC
CTAAAAATTATGGTTCCTAGAACATTTTGTAAAGAGACAGGCTACTTGTTACTTATTGCGGTTATGCTGG
TATCTCGAACATACTGTGATGTTGGATGATTGAGAAAGGACGCTCATTGAGAGTGGCATCATTGGTGC
CAGCAGCAAAGATTTCAAGAGATACTTATTCAACTTCATCGTGCATGCCTCTTATCTCTCTGTTAAT
AACTTCTGAAGTATGGGTTAAATGAGCTCAAAGTGTGCTTCGAGTCAGGCTCACACGGTACCTCTACG
AGGAGTATCTCCAAGCTTTCACCTATTAAAAATGGGCAACCTGGATAACAGAATAGCAAATCCAGACCA
GCTGCTTACACAGGATGTAGAAAAATTTGTAACAGTGTAGTCGATCTGTATTCAAATCTTAGTAAGCCA
TTTTTAGACATAGTTTTATATATTTTCAAGTAAACAAGTGAATTTGGAGCTCAGGCCCCGCAAGCATGA
TGGCCTACTTGCTGTTTCTGGGCTATTCTAACTCGACTCAGAAGACCCATTGGTAAGATGACAATTAT
GGAGCAGAAGTACGAAGGAGAATACAGATACGTGAATTCACGCCTTATCACTAATAGTGAAGAAATTGCC
TTTTACAATGGGAATAACCGGGAGAAGCAGACAATCCACTCAGTCTTCGAAAACCTGGTGGAAACCTAC
ATAATTTCAATTTCTTTCGGTTTTCTATGGGTTTCATTGATAGCATCATTGCCAAATATGTTGCCACTGT
CGTCGGTACTTGGTGTGAGTCGCCCCCTCTAGATCTGGCACCCCTCGCCACCTTACAGCACACAC
TCAGAGCTGCTGGAGGATTACTACCAAAGTGAAGAATGCTTTTGAGAATGTCTCAAGCTTTGGTCGTA
TAGTTTTGGCTGGGCGTGAATGACTAGATTGGCTGGTTTTACGGCTCGGATTACAGAATTAATGCAAGT
ACTAAAGGACTTAAATCATGGCAGATATGAACGTACAATGGTGTCAACAACAGGAGAAGGGCATTGAAGGA
GCACAAGCTAGTCCCTTGGTCCCTGGTGTGGAGAAATCATCAATACAGACAACATTATAAAGTTTGATC
ATGTTCTTTAGCAACACCAAAATGGTGACATCTTGATCCAAGACCTTAGTTTTGAAGTTCGATCTGGGGC
CAACGTTCTGATTTGGTCCAAACGGCTGTGGAAAGAGCTCCCTCTCCGTGTTCTTGGTGAGTTGTGG
CCTTTTTTGGAGGGCGGCTTACTAAACCTGAGAGAGGAAAGTTATTTTATGTTCTCAGCGACCTATA
TGACCCTGGGAACACTGAGAGACCAAGTCATATCCAGATGGGAAGGAAGATCAGAAGAAGAGGGGGGT
CTCTGACCAGGTGCTGAAGGAGTACTTGGACAATGTGCAGCTGGGTACATCCTTGAGCGAGAAGGCGGC
TGGGACAGTGTTCAAGACTGGATGGATGACTCAGCGGAGGAGAAAACAAGAATGGCGATGGCAAGAC
TGTTTTATCATAAACCCAGTTTGCCATTTGGATGAATGCACAAGTGGCGTCAAGTGTGGATGTGGAGGA
CTACATTTACAGCCACTGTCGAAAGTTGGCATCACCCCTTTTACCGTTTACACAGAAAAGTCCCTTTGG
AAGCACCAGGACTACTACCTGCATATGGATGGGAGAGGCAATTATGAATTCAAAAAGATCACAGAAGATA
CAGTTGAGTTCGGATCA

ACGCGTACGCGGGCCGCTCGAG - GFP Tag - GTTTAA

Protein Sequence: >MG222851 representing NM_008991
 Red=Cloning site Green=Tags(s)

MAAFSKYL TARNTSLAGAAFLLLCLLHKRRRALGLHGKKS GKPPLQNNEKEGKKERAVVDKVFLSRLSQI
 LKIMVPRFTCKETGYLLLIAMVLSRITYCDVWMIQNGTLIESGIIGRSSKDFKRYLFNFIAAMPLISLVN
 NFLKYGLNELKLCFRVRLTRYLYEEYLQAFYTYKMGNLDNRIANPDQLLTQDVEKFCNSVDLYSNLSKP
 FLDIVLYIFKLTSAIGAQPASMMAYLLVSGFLFLRLRRPIGKMTIMEQKYEGEYRYVNSRLITNSEEIA
 FYNGNKREKQTIHSVFRKLVEHLHNFIFFRFSMGFIDSIIAKYVATVVGYLVVSRPFLDLAHPRLHSTH
 SELLEDYYQSGRMLLRMSQALGRIVLAGREMTLAGFTARITELMQVLKDLNHGRYERTMVSQKEGIEG
 AQASPLVPGAGEIINTDNIKFDHVPLATPNGDILIQDLSFEVRSGANVLICGPNCGCKSSLFRVLGELW
 PLFGGRLTKPERGKLFYVQRPYMTLGLTRDQVIYPDGKEDQKKRGVSDQVLKEYLDNVQLGHILERE
 GGWDSVQDWMVDVLSGGEKQRMAMARLFYHKPQFAILDECTSAVSVDEVYIYSHCRKVGITLFTVSHRSLW
 KHHEYLLHMDGRGNYEFKKITEDTVEFGS

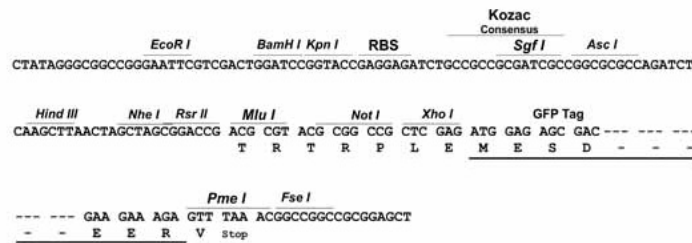
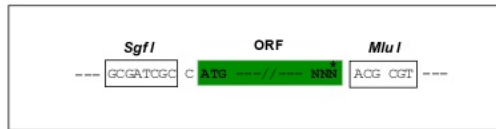
TRTRPLE - GFP Tag - V

Restriction Sites:

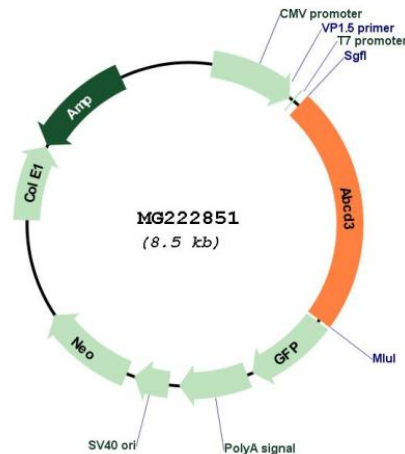
SgfI-MluI

Cloning Scheme:

Cloning sites used for ORF Shuttling:



Plasmid Map:



ACCN: NM_008991

ORF Size: 1977 bp

OTI Disclaimer: The molecular sequence of this clone aligns with the gene accession number as a point of reference only. However, individual transcript sequences of the same gene can differ through naturally occurring variations (e.g. polymorphisms), each with its own valid existence. This clone is substantially in agreement with the reference, but a complete review of all prevailing variants is recommended prior to use. [More info](#)

OTI Annotation: This clone was engineered to express the complete ORF with an expression tag. Expression varies depending on the nature of the gene.

Components: The ORF clone is ion-exchange column purified and shipped in a 2D barcoded Matrix tube containing 10ug of transfection-ready, dried plasmid DNA (reconstitute with 100 ul of water).

Reconstitution Method:

1. Centrifuge at 5,000xg for 5min.
2. Carefully open the tube and add 100ul of sterile water to dissolve the DNA.
3. Close the tube and incubate for 10 minutes at room temperature.
4. Briefly vortex the tube and then do a quick spin (less than 5000xg) to concentrate the liquid at the bottom.
5. Store the suspended plasmid at -20°C. The DNA is stable for at least one year from date of shipping when stored at -20°C.

RefSeq: [NM_008991.2](#), [NP_033017.2](#)

RefSeq Size: 3399 bp

RefSeq ORF: 1980 bp

Locus ID: 19299

UniProt ID: [P55096](#)

Cytogenetics: 3 52.94 cM

Gene Summary: The membrane-associated protein encoded by this gene is a member of the superfamily of ATP-binding cassette (ABC) transporters. ABC proteins transport various molecules across extra- and intra-cellular membranes. ABC genes are divided into seven distinct subfamilies (ABC1, MDR/TAP, MRP, ALD, OABP, GCN20, White). This protein is a member of the ALD subfamily, which is involved in peroxisomal import of fatty acids and/or fatty acyl-CoAs in the organelle. All known peroxisomal ABC transporters are half transporters which require a partner half transporter molecule to form a functional homodimeric or heterodimeric transporter. This peroxisomal membrane protein likely plays an important role in peroxisome biogenesis. Mutations have been associated with some forms of Zellweger syndrome, a heterogeneous group of peroxisome assembly disorders. [provided by RefSeq, Jul 2008]