

Product datasheet for **MG222835**

Khsrp (NM_010613) Mouse Tagged ORF Clone

Product data:

Product Type:	Expression Plasmids
Product Name:	Khsrp (NM_010613) Mouse Tagged ORF Clone
Tag:	TurboGFP
Symbol:	Khsrp
Synonyms:	6330409F21Rik; Fbp2; Fubp2; Ksrp
Mammalian Cell Selection:	Neomycin
Vector:	pCMV6-AC-GFP (PS100010)
E. coli Selection:	Ampicillin (100 ug/mL)



[View online »](#)

ORF Nucleotide Sequence:

>MG222835 representing NM_010613
 Red=Cloning site Blue=ORF Green=Tags(s)

TTTTGTAATACGACTCACTATAGGGCGGCCGGGAATTCGTCGACTGGATCCGGTACCGAGGAGATCTGCC
 GCC**CGCATCGCC**

ATGTCGGACTACAACACCGGAGGTCCCCGCCCGCCCGCCGCTCCCGCTGGCGCGGAGGGGAGCCG
 CGGGTGCGGGAGGAGCCCTCCGCCGGGCCCGCGGGCGGGGAGACCGGGCGGCGGAGCCCTGGCGG
 CGGCGGCCCGGGTGGAGGAGCGCGTCCGGGGGCCCTCACAGCCTCCCGGTGGCGGCGGCCCTGGGATC
 CGCAAGGACGCCCTTCGCCGACGCGTGCAGCGGGCCCGCAGATTGCAGCCAAAATCGGAGGTGATGCTG
 CTACCACCGTGAATAACAACACTCTGATTTTGGCTTTGGGGCCAAAAGAGACAGCTGGAAGATGGAGA
 CCAGCCAGACAGCAAGAACTGGCTTCCAGGGAGACTCGATTGGTTCTCAACTGGGACCCATCCATCCT
 CCCCCAGGACCTCAATGACAGAAGAGTATAGGGTTCGGATGGCATGGTGGCTTGATTATTGGCAGAG
 GTGGTGAAGCAGATAAAACAAAATCCAGCAGGACTCAGGCTGCAAAGTTCAGATCTCACCAGATAGTGGTGG
 CCTCCCTGAGCGCAGCGTGTCTGACTGGAGCACCTGAGTCTGTCCAAAAGGCAAAGATGATGCTGGAT
 GACATCGTGTCTCGGGGCGGTGGTGGCCCCCAGGACAGTTTCAGGACAACGCCAATGGGGGTGAGAATG
 GCACAGTGCAGGAGATCATGATCCCTGCTGGCAAGGCTGGCTGGTCAATTGGTAAAGGTGGAGAGACCAT
 CAAGCAGCTGCAGGAGCGGGCTGGGGTGAAGATGATTTTAATTCAGGATGGCTCCAGAACAACAAATGTG
 GACAAGCCACTGCGGATTATCGGGGACCCATACAAAGTACAGCAAGCCTGTGAGATGGTGGTGGACATCC
 TGCGAGAACGTGACCAAGGTGGCTTTGGGGACCGCAATGAATACGGATCTCGAGTTGGTGGAGGCATTGA
 TGTGCCTGATCCAGGCATTGAGTTGGTGTAGTCATTGGCCGGAGTGGAGAGATGATCAAGAAGATCCAG
 AATGATGCCGGTGTGCGCATCCAGTTCAAGCAAGATGATGGGACCGGCCCTGAGAAGATTGCTCACATCA
 TGGGGCTCCAGATCGGTGTGAACACGACGCCCCGGATCATCAATGACCTCTCCAGAGTCTTCGGAGTGG
 GCCCCCGGTCCCTCCAGGGGCCCTGGCATGCCCTGGGGCAGGGGCCGGGGCCGAGGCAAGGCAAC
 TGGGGCCCTCCTGGAGGGGAGATGACTTTCTCCATTCTACCCATAAGTGTGGGCTGGTCAATTGGCCGAG
 GCGGGGAGAATGTGAAGGCCATTAACCAGCAGACAGGCGCCTTTGTGAAATATCTCGGCAGCTGCCACC
 CAATGGGGACCCCAATTTCAAGTTGTTTGTGATCCGGGGATCGCCCCAGCAGATTGACCATGCAAAGCAG
 CTCATTGAGGAGAAGATAGAGGGTCCCCTGCCCAGTTGGACCAGGCCCTGGGGGACCAGGCCCTGCTG
 GACCCATGGGGCCTTTCAACCTGGACCCTTCAACCAGGGCCTCCAGGGGACCCCCACATGCTGGTGG
 TCCCCCTCCTCACCAGTACCCGCTCAGGGCTGGGGCAATACCTACCCCCAGTGGCAGCCACCTGCCCT
 CAGGACCCAAACAAGCTGCTGCAGCGGTACAGATCCTAATGCTGCCTGGGCTGCCTACTACTCTCACT
 ACTACCAGCAACCCCAAGTCTGTGCCAGGCCCTGCCAGGCCCTGCAGCCCCAAGTGCACAGGGGGA
 ACCCCCCAGCCTCCACCCTGGCCAATCAGACTACACCAAGGCTTGGGAAGAGTATTACAAAAAATTT
 GGCCAGCAGCCCCAGCAGCCTGGGGACCCCCACAGCAGGACTACACCAAGGCTGGGAGGAGTACTACA
 AGAAGCAAGCACAAGTGGCCACTGGTGGGGTCTGGAGCACCCTGGCTCCAGCCTGATTACAGTGC
 TGCTGGGCTGAGTATTACAGACAGCAGGCTGCTTACTACGGACAGACCCAGGCCCTGGTGGCCACAG
 CCACCTCCCACCCAGCAGGGACAGCAGGCAAGTGGGAACTGCCACCTCCTCCTCCTTTCTCCT
 TCCAACCCCGGCCACCGTCCATCCTGCCTTAGTGGGTAGCGCCGAAACCTTTCCCTGCGGGGTGTG
 CCT

ACGCGTACGCGGCCGCTCGAG - GFP Tag - GTTTAA

Protein Sequence: >MG222835 representing NM_010613
 Red=Cloning site Green=Tags(s)

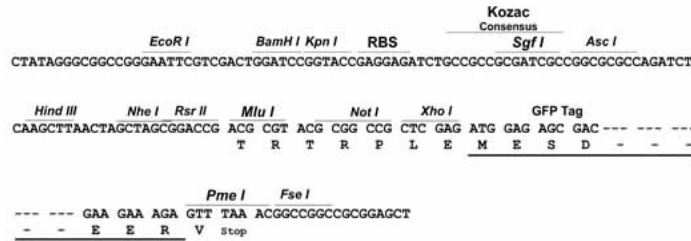
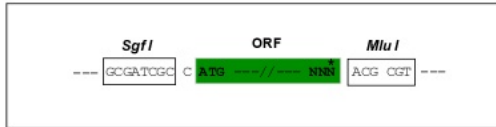
```
MSDYNTGGPPPPPPAGGGGAAGAGGGPPPPGAGDRGGGGPGGGPGGGASGGPSQPPGGGGPGI
RKDAFADAVQRARQIAAKIGGDAATTVNNNTPDFGFGGQKRQLEDGDQPD SKKLASQGDSIGSQLGPIHP
PPRTSMTEEYRVPDGMVGLIIGRGEQINKIQQDSGCKVQISPDSSGLPERSVSLTGAPESVQKAKMMLD
DIVSRGRGGPPGQFHDNANGGQNGTVQEIMIPAGKAGLVIGKGETTIKQLQERAGVKMILIQDGSQNTNV
DKPLRIIGDPYKQQACEMVMDILRERDQGGFGDRNEYGSRVGGGIDVPVPRHSVGVVIGRSGEMIKKIQ
NDAGVRIQFKQDDGTGPEKIAHIMGPPDRCEHAARIINDLLQSLRSGPPGPPGAPGMPGGRRGRGQGN
WGPPGGEMTFSIPTHKCLVIGRGENVKAINQQTGAFVEISRQLPPNGDPNFKLFVIRGSPQQIDHAKQ
LIEEKIEGPLCPVGGPGGGPGAGMPGPNPQPPGAPPHAGGPPPHQYPPQGWNTYPQWQPPAP
HDPNKA AAAATDPNAWAAAYSHYYQQPPGVPGPAPAPAAPPAQGEPPQPPPTGQSDYTKAWEEYKKI
GQQPQQPGAPPQQDYTKAWEEYKKAQVATGGGPGAPPGSQPDYSAAWAEYYRQQAAYYQTPGPGGPQ
PPPTQQGQQQASGNCHPPPPPF SFQPPATVHPALVGSAGNPFPCGVCP
```

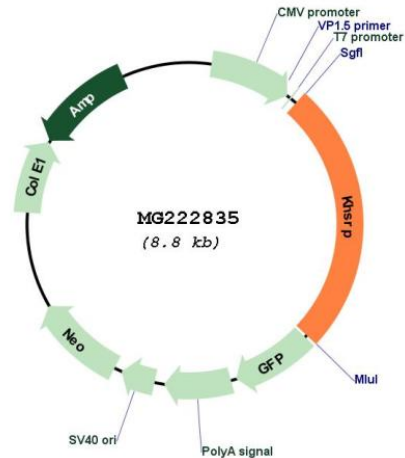
TRTRPLE - GFP Tag - V

Restriction Sites: SgfI-MluI

Cloning Scheme:

Cloning sites used for ORF Shutting:



Plasmid Map:


ACCN: NM_010613

ORF Size: 2244 bp

OTI Disclaimer: The molecular sequence of this clone aligns with the gene accession number as a point of reference only. However, individual transcript sequences of the same gene can differ through naturally occurring variations (e.g. polymorphisms), each with its own valid existence. This clone is substantially in agreement with the reference, but a complete review of all prevailing variants is recommended prior to use. [More info](#)

OTI Annotation: This clone was engineered to express the complete ORF with an expression tag. Expression varies depending on the nature of the gene.

Components: The ORF clone is ion-exchange column purified and shipped in a 2D barcoded Matrix tube containing 10ug of transfection-ready, dried plasmid DNA (reconstitute with 100 ul of water).

Reconstitution Method:

1. Centrifuge at 5,000xg for 5min.
2. Carefully open the tube and add 100ul of sterile water to dissolve the DNA.
3. Close the tube and incubate for 10 minutes at room temperature.
4. Briefly vortex the tube and then do a quick spin (less than 5000xg) to concentrate the liquid at the bottom.
5. Store the suspended plasmid at -20°C. The DNA is stable for at least one year from date of shipping when stored at -20°C.

RefSeq: [NM_010613.3](#), [NP_034743.3](#)

RefSeq Size: 4001 bp

RefSeq ORF: 2247 bp

Locus ID: 16549

UniProt ID: [Q3U0V1](#)

Cytogenetics: 17 29.63 cM

Gene Summary: Binds to the dendritic targeting element and may play a role in mRNA trafficking. Part of a ternary complex that binds to the downstream control sequence (DCS) of the pre-mRNA. Mediates exon inclusion in transcripts that are subject to tissue-specific alternative splicing. May interact with single-stranded DNA from the far-upstream element (FUSE). May activate gene expression. Also involved in degradation of inherently unstable mRNAs that contain AU-rich elements (AREs) in their 3' UTR, possibly by recruiting degradation machinery to ARE-containing mRNAs (By similarity).[UniProtKB/Swiss-Prot Function]