

Product datasheet for **MG222813**

Cacna2d1 (NM_001110843) Mouse Tagged ORF Clone

Product data:

Product Type: Expression Plasmids
Product Name: Cacna2d1 (NM_001110843) Mouse Tagged ORF Clone
Tag: TurboGFP
Symbol: Cacna2d1
Synonyms: Ca(v)alpha2delta1; Cac; Cacna2; Cchl; Cchl2a
Mammalian Cell Selection: Neomycin
Vector: pCMV6-AC-GFP (PS100010)
E. coli Selection: Ampicillin (100 ug/mL)
ORF Nucleotide Sequence: >MG222813 representing NM_001110843
Red=Cloning site Blue=ORF Green=Tags(s)

TTTTGTAATACGACTCACTATAGGGCGGCCGGAATTCGTCGACTGGATCCGGTACCGAGGAGATCTGCC
GCCCGGATCGCC

ATGGCTGCTGGCTGCCTGCTGGCCTTGACTCTGACACTTTTCCAATCTGGGCTGATCGGCCCTCGAGCG
 AGGAGCCCTTCCCTTCGCCCGTCACTATCAAGTCATGGGTGGACAAGATGCAAGAAGACCTTGTCACT
 GGCAAAAACAGCAAGTGGAGTGACTCAGCTTGCTGATTTATGAAAAATACCAAGATTTGTATACTGTG
 GAGCCCAACAATGCACGCCAAGTGGTTGAAATTCAGCCCGAGACATTGAGAAGCTTCTAAGCAACAGAT
 CTAAAGGCCCTGGTGCCTGGCTATGGAAGCAGAGAAAGTCCAAGCAGCCACCAATGGAGGGAAGATTT
 TGCAAGCAATGAAGTTGCTACTATAATGCTAAGGATGATCTTGATCCTGAAAGAAATGAGAGTGAGCCA
 GGCAGCCAACGGATTAACCTGTTTTATTGAAGATGCTAATTTTGGACGTGAGATATCCTATCAGCATG
 CAGCGGTCATATTTCCACGGACATCTATGAGGGCTCAACCATAGTGTTAAACGAACTCAACTGGACAAG
 TGCCTTAGATGAAGTATTCAAAAGAAATCGAGACGAAGACCCTACACTGCTGTGGCAAGTGTGGCAGC
 GCCACTGGCCTGGCCGATATTATCCAGCTTCCATGGGTGGATAATAGTAGAACTCCAAAAGATTG
 ATCTATATGATGTACGCAGAAGACCATGGTACATCCAGGGAGCTGCATCCCCAAGGACATGCTCATTCT
 GGTGGACGTGAGTGAAGTGTGAGCGGATTGACTCTGAACTCATCCGAACATCTGTCTCCGAGATGTTA
 GAAACCCTCTGATGATGATTTCTGTAATGTAGCTTCAATTAACAGCAACGCTCAGGATGTAAGCTGTT
 TCCAGCACCTGGTTCAAGCGAATGTAAGAAATAAGAAAGTGTGAAAGATGCCGTGAATAACATTACAGC
 AAAGGGGATCACAGATTACAAGAAAGGCTTTAGCTTTGCCTTCGAACAGCTACTTAATTATAATGTTTCC
 AGAGCTAATTGCAATAAGATTATCATGTTATTCACGGATGGAGGAGAAGAGAGAGCCAGGAGATATTTG
 CCAAATACAATAAAGACAAAAAAGTCCGTGTGTTTACATTTTCCGTGGTCAACATAATTATGACAGAGG
 ACCTATTCAGTGGATGGCTTGTGAAAATAAAGGTTACTATTATGAGATTCCTCCATTGGTGCAATAAGA
 ATCAATACTCAGGAATATCTAGATGTTCTGGGAAGACCAATGGTTTTAGCTGGTGACAAAGCGAAGCAAG
 TTCAATGGACAAATGTGATTTGGACGCCCTGGAAGTGGGACTTGTCTACTGGAAGTCTACCAGTCTT
 CAACGTCAGTGGCAATCTGAAAATAAGACAAACTGAAGAACCAGTTGATCTTGGTGTGATGGGCGTT



[View online »](#)

GATGTGTCTCTGGAAGATATCAAGAGATTGACACCACGTTTTACTCTGTCCCAATGGCTACTATTTTG
 CAATTGATCCTAATGGCTATGTCTTATTGCATCCAAATCTTCAGCCAAAGCCTATTGGTGTAGGTATACC
 GACAATTAATTTAAGGAAAAGGAGACCCAACTTCAGAACCCCAAATCTCAGGAGCCAGTCACACTGGAT
 TTTCTCGATGCTGAGTTAGAGAAATGAAATTAAGTGGAGATTGAAATAAAATGATAGATGGAGAAAAGTG
 GAGAAAAACGTTCAAGACTCTGGTCAAGTCTCAAGATGAGAGATACATTGACAAAGGAAATCGAACATA
 CACATGGACGCCGTCAATGGCACAGATTACAGTTTGGCCTTGGTATTGCCAACCTACAGTTTTTACTAT
 ATAAAAGCCAAACTAGAAGAGACAATAACTCAGGCCAGATATTCAGAAACCCTGAAGCCAGACAATTTTG
 AAGAACTGGCTATACTTTCATAGCACCAAGGGAATACTGCAATGATCTTAAACCTCAGATAATAACAC
 TGAATTTCTTTGAAATTTCAATGAATTTATTGATAGGAAAACCTCAAACAACCCCTCCTGTAATACAGAT
 TTGATTAATAGAACTTCTGCTGGATGCAGGTTTTACAAATGAACTTGCCAAAATTATTGGAGTAAGCAGA
 AAAATATCAAAGGAGTGAAGGCACGCTTTGTGGTACAGACGGTGGGATTACGAGAGTTTATCCCAAAGA
 GGCCGGAGAAAATTGGCAAGAGAACCCAGAGACGTACGAGGACAGCTTCTACAAACGGAGCCTAGATAAC
 GATAACTACGTTTTCACTGCGCCTACTTTAACAAAAGTGACCTGGTGCATGAACTGGAATTATGG
 TAAGCAAAGCAGTAGAACTGTATATCCAAGGAAAACCTTAAAGCCCGCAGTTGTGGGAATTAATTTGA
 TGTAAATCTTGGATAGAAAATTTACCAAACCTCAATCAGGGATCCGTGTGCTGGTCCAGTTTGTGAC
 TGCAAAAGAAACAGTGATGTAATGGACTGTGTCATTCTAGATGATGGTGGATTTCTTTGATGGCAAATC
 ACGATGATTACACTAATCAGATTGGACGTTTTTTGGAGAGATTGACCCAAGCATGATGAGACACCTGGT
 TAATATACACTTTATGCATTCAACAAATCATATGACTATCAGTCCGTGTGCGATCCAGGGGCAGCACCA
 AAGCAGGGGGCAGGACATCGCTCAGCATATGTGCCATCGATTGCAGATAACTGCAGATTGGCTGGTGGG
 CCACCGCTGCCGCTGGTCTATTCTCCAGCAGCTGCTCTTGAGTTTGACATTTCCACGGCTCCTTGAGGC
 AGTTGAGATGGAGGAAGTACTTACAGCCTCCCTGTCTAAGCAGAGCTGCATCACAGAACAACCCAG
 TACTTCTCAAGAACGATACTAAATCATTACAGTGGTTTACTGGACTGTGAAACTGTTCCAGGATCTTTC
 ATGTAGAGAAACTTATGAACACCAACTAGTATTCATAATGGTGGAGAGCAAAGGGACATGTCGCTGTA
 CACGCGGCTGCTCATGCAAGCGGAACAGACTTCTGATGGTCCAGATCCTTGCAGATGGTCAAGCAGCC
 AGATACCAGAAAAGGACCTGATGTCTGCTTTGATAATAATGTGCTGGAGGATTATACTGACTGTGGTGGT
 TTTCTGGTTAAACCTTCTTATGGTCTATCTTTGGACTCCAGTTTATACTCCTTTGGCTGGTATCTGG
 CAGCAGACACTACCTACTG

ACGCGTACGCGGCCGCTCGAG - GFP Tag - GTTTAA

Protein Sequence:

>MG222813 representing NM_001110843
 Red=Cloning site Green=Tags(s)

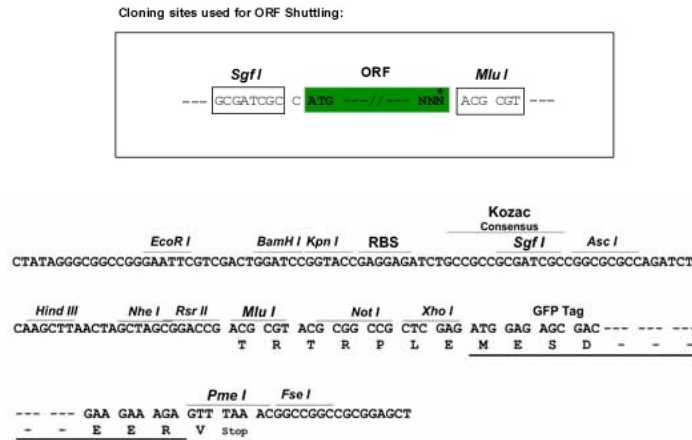
MAAGLLALTLTFQSLIGPSSEEPFSPVTIKSWDKMQEDLVTLAKTASGVTQLADIYEKYQDLTYV
 EPNNARQLVEIAARDIEKLLSNRSKALVRLAMEAEKVQAAHQWREDFASNEVVYNAKDDLDPERNESEP
 GSQRIKPVFIEDANFGRQISYQHAAVHIPTDIYEGSTIVLNELNWTLSALDEVFKRNRDEPTLLWQVFGS
 ATGLARYYPASPWVDNSRTPNKIDLYDVRRRPWYIQGAASPKDMLILVDVSGSVSGLTLKLIKRTSVSEML
 ETLSDDDFVNVASFNSAQDVSCFQHLVQANVRNKKVLDKAVNNITAKGITDYKKGFSFAFEQLLNYNVS
 RANCNKIIMLFTDGGEEAQQEIFAKYNKDKKVRVFTFSVGQHNYDRGPIQWMACENKGYYYEIPSIGAIR
 INTQEYLDVLAGDPMVLAGDKAKQVQWNTNYYLDALELGLVITGTLPVFNVTGQSENKTNLKNQLILGVMGV
 DVSLEDIKRLTPRFTLCPNGYFAIDPNGYVLLHPNLQPKPIGVGIPTINLRKRRPNVQNPKSQEPVTL
 FLDAELENEIKVEIRNKMIDGESGEKTFRTLKVSQDERYIDKGNRTYTWPVNGTDYSLALVLPYTFY
 IKAKLEETITQARYSETLKPDNFEEESGYTFIAPREYCNDLKPSDNNEFLLNFNEFIDRKTNNPSCNTD
 LINRILLDAGFTNELVQNYWSKQKNIKGVKARFVVDGGITRVYPKEAGENWQENPETYEDSFYKRSLDN
 DNYVFTAPYFNKSGPGAYESGIMVSKAVELYIQGKLLKPAVVGKIDVNSWIENFTKTSIRDPCAGPVCD
 CKRNSDVMDCVILDDGGFLLMANHDDYTNQIGRFFGEIDPSMMRHLVNIISLYAFNKSYDYQSVCDPGAAP
 KQGAGHRSAYVPSIADILQIGWWATAAAWSILQQLLLSLFPRLLEAVEMEEDDFASLSKQSCITEQTQ
 YFFKNDTKSFGLLDCGNCSRIHFVEKLMNTNLVIMVESKGTCPDTRLLMQAEQTSQDGPDCDMVKQP
 RYRKGPVDCFDNNVLEDYTDGCVSGLNPSLWSIFGLQFILLWLVSISRHYLL

TRTRPLE - GFP Tag - V

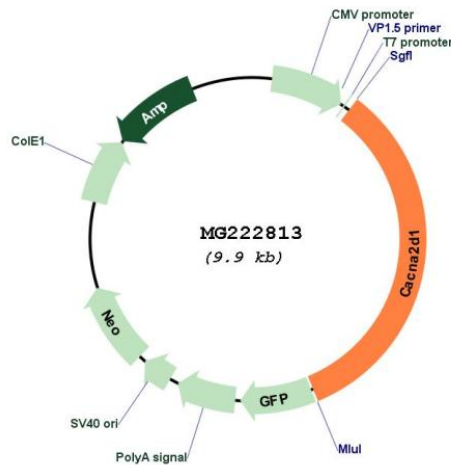
Restriction Sites:

Sgfl-MluI

Cloning Scheme:



Plasmid Map:



ACCN: NM_001110843

ORF Size: 3309 bp

OTI Disclaimer: The molecular sequence of this clone aligns with the gene accession number as a point of reference only. However, individual transcript sequences of the same gene can differ through naturally occurring variations (e.g. polymorphisms), each with its own valid existence. This clone is substantially in agreement with the reference, but a complete review of all prevailing variants is recommended prior to use. [More info](#)

OTI Annotation: This clone was engineered to express the complete ORF with an expression tag. Expression varies depending on the nature of the gene.

Components:	The ORF clone is ion-exchange column purified and shipped in a 2D barcoded Matrix tube containing 10ug of transfection-ready, dried plasmid DNA (reconstitute with 100 ul of water).
Reconstitution Method:	<ol style="list-style-type: none">1. Centrifuge at 5,000xg for 5min.2. Carefully open the tube and add 100ul of sterile water to dissolve the DNA.3. Close the tube and incubate for 10 minutes at room temperature.4. Briefly vortex the tube and then do a quick spin (less than 5000xg) to concentrate the liquid at the bottom.5. Store the suspended plasmid at -20°C. The DNA is stable for at least one year from date of shipping when stored at -20°C.
RefSeq:	<u>NM_001110843.1, NP_001104313.1</u>
RefSeq Size:	7472 bp
RefSeq ORF:	3312 bp
Locus ID:	12293
UniProt ID:	<u>O08532</u>
Cytogenetics:	5 6.56 cM
Gene Summary:	This gene encodes a regulatory component of the voltage-dependent calcium channel complex. The product of this gene is a proprotein that is proteolytically processed into alpha-2 and delta subunits, which are linked by a disulfide bond. Alternatively spliced transcript variants encoding multiple isoforms have been observed for this gene. [provided by RefSeq, Jan 2013]