

## Product datasheet for **MG222786**

### **Baat1 (NM\_172724) Mouse Tagged ORF Clone**

#### **Product data:**

|                           |  |
|---------------------------|--|
| Product Type:             | Expression Plasmids                      |
| Product Name:             | Baat1 (NM_172724) Mouse Tagged ORF Clone |
| Tag:                      | TurboGFP                                 |
| Symbol:                   | Baat1                                    |
| Synonyms:                 | AA881470; Brat1                          |
| Mammalian Cell Selection: | Neomycin                                 |
| Vector:                   | pCMV6-AC-GFP (PS100010)                  |
| E. coli Selection:        | Ampicillin (100 ug/mL)                   |



[View online »](#)

**ORF Nucleotide Sequence:**

>MG222786 representing NM\_172724  
 Red=Cloning site Blue=ORF Green=Tags(s)

TTTTGTAATACGACTCACTATAGGGCGGCCGGGAATTCGTCGACTGGATCCGGTACCGAGGAGATCTGCC  
 GCC**GCGATCGCC**

ATGGACCCAGAATGCTCCAGGCTCTCCGGCTCTCTGTGCTGTTTTGGCAGATCCAGACAGCTGGTGG  
 CAGATGACACCTGCTTGGAGAACTGCTGGACTGGTTAAAACAGTGACAGAGGCAGAGTCTAGCCTCCA  
 ACTACTACAGGACCATCCCTGCTTAATGGAGCTCCTGTCCATGTGCTGAAGCCACAGGACGTGAGCCCT  
 AGGGTCTCTCCTTTGCTCTGCGCCTTGTGGGGTCTTCGACAGCCAGGAAGACTGTTTTGAGTACCTTC  
 AGCAGGGAGAGTTGTTGCTGGGGCTCTTTGGGGAGTCAAGTGCCTCCCGGCTGGGCAGCCTGGAGCATCCC  
 AAGTGTGCGCAGCGGCTGGATCCAGGCTGTGCTACCTGGCACACCACCTAGCGCCCTGCACTTCTG  
 GCTGACAGTGGTGTGGACACGCTCTTCTCCTTGACAGGGAGACCCAGCCTGTTGTCGCTCAGCAG  
 CCAGCCAGCTCCTAGTACATATCCTGGCTGTCCATGCAAGGTGGAGCCCAAGGTCCTCCCTGCA  
 AGCTGCTGCTTGGCCTATGTGTGCCAGAAGATTGTAACCATGTGGATGAGTCCCTGCATGCCAAAGCC  
 ACCCCCCAGGTACACAGGCCTTGAATGTCTGACTACGACCTTCGGGCGCTGCCATAACCCTGGACAG  
 GGGTCTCTGGGAGCGGCTAAGTCCCCCTGTTGCCCGCTGTTGAGAGAGACCCATTCCAGCCGTGCA  
 CGCGCTCATGGACCTTCTTCTAGTGTGGCCAGGTCGCTGTGTTGAATTTGCAGCCTGTGGCCTGTGG  
 GAGATGCTGGCCAGACTCTGAGCCGCTGAGCCCATACAAGCTGGGCTCTAGCCCTGGGGACCTGA  
 AACTTCAGCACTGCCCCAGGAATTGAGACCCAGGCCTTTGGAGTCTCCTACAGCCACTGGCCTGTAT  
 CCTGAAAGCTACCACTCAGGCCCTGGACCTCCAGGCTTGCTGGATGGGACTGTGGGTAGCTTGTGACT  
 GTGGATAACTCTTGGCTTCAAAGTCAGCCTGTGTGGGACTCCTTTGCCAGACTGGCTCACCTTGGAG  
 AGTGCAGATGCTGCCAGTGCCCTCACCTGGCCACAGGTGCATCTGCTGCAAGCTGCTTTGACTAT  
 ATTGCATCTCTGTGATGGCTCAGCGGACCCAGCTCCAGTGCAGGAGCGGTCTCTGTGGGACTCTGGGT  
 GGCTGTGTTGCTGCCAGCAGCAGCCCTGACTTCTTGGGGACCTGTCTCAGGGGACAAGCCCCCTGG  
 AGTTGGTCTGGAGGATTTGCTGTTCTCCTGAAGACCCTGGAGAGCCAGAGTCCAGCCCCATGGTCTC  
 AAAGAAGGCCTTCCAGGCCACACTCAGATGGCTCCAGAACCACACAAGACCCCAAGCAGCTCTGATCTC  
 AGCTCCGACGCCCTGCTGTTTCTCGAGAGCTGTTCCCATACTACAGAAGCGCTATGCAGCCATGTT  
 GGGAGGTGAGGGACTCTGCCCTGGAGTCTGACGCATCTGATCCGACACTGGGGAGGGCAGGCTGACTT  
 CAGAGAGGCACTGCGTTCCTCAGAAGTACCACACTTGCCTCCAGCTTCTCAAGACCCAGAGAGTTAC  
 GTCGAGCAAGTCCGTTGGTGGCCTGGCAGCTCTCCAGCCAGGCTGCAGGCGCTCCCGCTAGCC  
 CCGAGAACTCGCAGGCCAACAGGTAGACACAGGGAGTTGG

**ACGCGTACGCGGCCGCTCGAG** - GFP Tag - GTTTAA

**Protein Sequence:**

>MG222786 representing NM\_172724  
 Red=Cloning site Green=Tags(s)

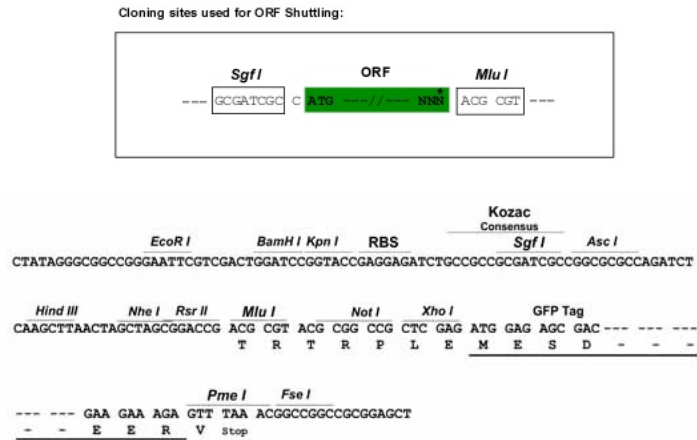
MDPECSRLLPALCAVLADPRQLVADDTCLEKLLDWFKTVTEAESSLQLLQDHPCLMELLSHVLKPQDVSP  
 RVL SFALRLVGVFAAQEDCFEYLQQGELLLGLFGESGAPGWAAWSIPSVRSGWIQGLCYLAHHPALHFL  
 ADSGAVDTLFSLQGDPSLFFVASAASQLLVHILALSMQGGAPGSPVPEAAAWPMCAQKIVNHVDESLHAKA  
 TPQVTQALNVLTTTFGRCHNPWTGVLWERLSPVARL FERDPIPAVHALMDLLSVARSPVLNFAACGLW  
 EMLAQTLSRLSPIQAGPLALGTLKQHCPELRTQAFGVLLQPLACILKATTQAPGPPGLLDGTVGSLLT  
 VDILLASKSACVGLLCQTLAHLLEELQMLPQCPSWPVQHLLQAALTILHLCDGSADPSSSAGGRLCGTLG  
 GCVRVQRAALDFLGTLSQGTSPLELVLEVFVLLKTLTLESPESSPMVLLKAFQATLRWLQNPHTPSSDL  
 SSDALLFLGELFPILQKRLCSPCWEVRDSALEFLTHLIRHWGGQADFREALRSSEVPTLALQLLQDPESY  
 VRASAVGAAGQLSSQGLQAAPASPENSQAQQVDTGSW

**TRTRPLE** - GFP Tag - V

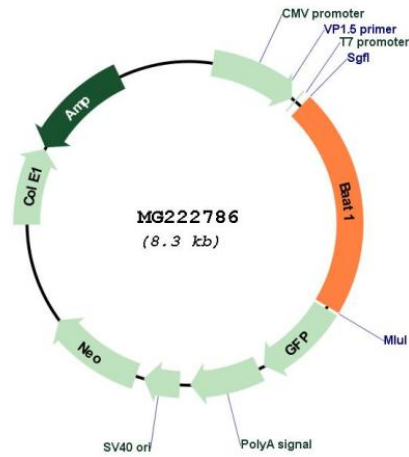
**Restriction Sites:**

Sgfl-MluI

## Cloning Scheme:



## Plasmid Map:



ACCN:                  NM\_172724  
 ORF Size:              1791 bp

|                               |   |
|-------------------------------|---|
| <b>OTI Disclaimer:</b>        | The molecular sequence of this clone aligns with the gene accession number as a point of reference only. However, individual transcript sequences of the same gene can differ through naturally occurring variations (e.g. polymorphisms), each with its own valid existence. This clone is substantially in agreement with the reference, but a complete review of all prevailing variants is recommended prior to use. <a href="#">More info</a>  |
| <b>OTI Annotation:</b>        | This clone was engineered to express the complete ORF with an expression tag. Expression varies depending on the nature of the gene.  |
| <b>Components:</b>            | The ORF clone is ion-exchange column purified and shipped in a 2D barcoded Matrix tube containing 10ug of transfection-ready, dried plasmid DNA (reconstitute with 100 ul of water).  |
| <b>Reconstitution Method:</b> | <ol style="list-style-type: none"><li>1. Centrifuge at 5,000xg for 5min.</li><li>2. Carefully open the tube and add 100ul of sterile water to dissolve the DNA.</li><li>3. Close the tube and incubate for 10 minutes at room temperature.</li><li>4. Briefly vortex the tube and then do a quick spin (less than 5000xg) to concentrate the liquid at the bottom.</li><li>5. Store the suspended plasmid at -20°C. The DNA is stable for at least one year from date of shipping when stored at -20°C.</li></ol>                 |
| <b>RefSeq:</b>                | <a href="#">NM_172724.3</a> , <a href="#">NP_766312.1</a>   |
| <b>RefSeq Size:</b>           | 3856 bp   |
| <b>RefSeq ORF:</b>            | 1794 bp   |
| <b>Locus ID:</b>              | 231841  |
| <b>Cytogenetics:</b>          | 5 G2  |
| <b>Gene Summary:</b>          | A similar gene in human encodes a Breast Cancer 1 (BRCA1) interacting protein that is involved in cell cycle checkpoint signaling. The similar human protein is localized to DNA double strand breaks caused by ionizing radiation, and regulates cellular DNA damage response through interactions with Ataxia Telangiectasia Mutated (ATM) and DNA-dependent Protein Kinase. A pseudogene of this gene is located on chromosome 3. Alternative splicing results in multiple transcript variants. [provided by RefSeq, Jan 2013] |