

Product datasheet for **MG222769**

Amer1 (NM_175179) Mouse Tagged ORF Clone

Product data:

Product Type: Expression Plasmids
Product Name: Amer1 (NM_175179) Mouse Tagged ORF Clone
Tag: TurboGFP
Symbol: Amer1
Synonyms: 2810002O09Rik; AW492303; Fam123b; Wtx
Mammalian Cell Selection: Neomycin
Vector: pCMV6-AC-GFP (PS100010)
E. coli Selection: Ampicillin (100 ug/mL)
ORF Nucleotide Sequence: >MG222769 representing NM_175179
 Red=Cloning site Blue=ORF Green=Tags(s)

TTTTGTAATACGACTCACTATAGGGCGGCCGGAATTCGTCGACTGGATCCGGTACCGAGGAGATCTGCC
 GCC**CGATCGCC**

ATGGAGAGTCAACAGGATGAAGCTGTTCAAACCAAGGAGCATCAACTTCTAGCGATGCCAAGACCAGG
 GAGCTGAAAAGGGAGCCAAGAATAAGACAACCTGAGGCAACAGAAGGACCAACATCAGAGCCTCCCTTATC
 AGGCCAGGTAGGCTGAAGAAAAGTCCATGAACTCTTTGGTGGCAAGAAGGGAATCTGTACTCTGCCT
 AGTTTCTTTGGGGTGGACGAAGCAAAGTTCTGGAAAAGTCAGCTCTAAGAAAAGTCTAAACAAGAGTA
 AGACTCACGATGGTCTAAGTGAAGCGTCTCAGGGACCTGAAGATGTTGTCATTGAAGAAACAGACCTCTC
 TACACCTTTGTCCAAGTCATCTGCTCAATTTCTAGCTCCAGAGTGCCAATGGAGCGTTGGAGATAGGC
 TCTAAACATAAGACATCTGGGACTGAAGCCATAGAAAAAGCTGGAGTTGAGAAGGTACCCCTCTGTGCACA
 AGCCGAAGAAAAGCCTAAAAAGCTTCTTTAGCAGTATCCGCCGTACCCGGAAGGGCAAGACTTCTGGGGC
 TGACCAAAGTGTGCCAGGGGCCAAGGAAGTGGAGGGGCAAGAACCAGGTCTCATGAGCATGTGAGTTCA
 ATCTCTTGCCCAGCTCTGAGGAGATATCCGAGACACTAGAAAGGAAAAAGCCAAACCCAGGATGCC
 CTGGACCAAAAAATGTCTCCAGCACAAGTACATTTTCCACCACTACTGAGAAGGCAGCTTGTAATAATCC
 AGAAAACTCACAAAGGACCTGTGCCTCAGAGTTCATGCAGCCCAAGCCTGTTCTTGAAGGTGGTAGTCTA
 GAGGAGCCCACTTCAGAAACAGAAGGAAAAGTGGTGGCAGGAGAAGTAAACCCACCAATGGCCCTG
 TTGGGGATCAGCTAAGCCTCTTGTGGGGATGTTACATCGCTAAAAAGCTTTGACTCACTGACAGGTTG
 TGGTGACATTATAGCAGAACAGGACATGGACAGCATGACAGATAGCATGGCCTCTGGTGGCCAGAGGGCC
 AACCGAGATGGGACCAAGCGAAGTTCCTGCTTGGTAACCTACCAAGGAGGTGGGAGGAGATGGCCTTGC
 CAGATGATGATGACAATGATGATGAAGAAGAAGAAGAAGAAGAAGAAGAAGAAGAAGAAGAAGAAGAAGA
 AGAAGAAGAAGAAGAAGAAGAAGAAGAAGAAGAAGAATTATTAGAGGATGAAGAGGAGGTTAAGGATGGA
 GAGGAAAATGATGACTTAGAGTATCTGTGGCAAGTGCCAGATATACCAAGATTTAATATGAATCTGG
 GCTACCACTACTGCTATATCTCCAGCCACCAGGGCTACATGCTTCTTGACCCAGTTCAGTCTTATCTAA
 TCTAGGCCTTGAGAAGTCTTGGACCTCAGAGCGACCAGCAAGAGTCTGCTCCCAATAGTGATGAAGT



[View online »](#)

TATTATGACTCTACCACACCAGGATTTGAGGATGATTCAGGTGAGGCTCTGGGACTTGCCACAGGGATT
 GTCTACCCAGGGACAGCTATAGTGGTATGCGCTATATGAGTTCTATGAGCCAGATGACAGTCTTGAGCA
 CTCCCCACCTGGGGATGACTGCCTATATGACCTCCGTGGACGCAACTCAGAGATGTTGGATCCTTTCTTG
 AACTTGGAGCCCTTTTCTTCTCGGCCACCTGGGCAATGGAAACCGAGGAAGAACGGCTAGTGACCATCC
 AGAAGCAGTTGCTATACTGGGAACCTCGCCGGGAGCAGCGTGAGGCTCAAGAGGCATGTGCCAGAGAGGC
 TCATGCCAGAGAAGCTTATGCCGAGACACCCATACTCGGGAATCTTATGGCAGAAATGTCCGAGCCCGA
 GAAACTCAGGCCCTAGAGGCTCATTCTCAAGAGGGTTCAGTCCAAGAGACCAAGTACGGCAGGAGAAGC
 CTGCCTTGGAGTATCAGATGAGGCCCTTAGGTCCTCAGTGATGGGTCTGGTGGCAGGGACATCAGGAGG
 TTCTCAGACTTCTCACCGGGGAACCACTTCAGCTTTCCCTGCTACTTCTAGCAGTGAGCCAGACTGGAGG
 GATTTCCGTCCTCTGGAGAAGCGTTTTGAGGGGACTTGTTCAAAAAAGATCAAAGTACTTGTTTAATGC
 AGCTCTCCAGAGTGATGCCATGTTTGAGCCAGACATGCAAGAAGCAAATTTTGGAGGCTCACCCAGGAA
 GGCGTACCCTAGTTACTCACCCCTGAGGAGCCAGAGGAAGAAGAAGAGGAGAAGGAAGGGAAATGCCACT
 GTGAGTTTCTCACAGGCCCTAGTAGAGTTCACCAGCAATGGAAACCTTTTACCAGCATGTCTACAGCT
 CTGATTCTGACTCATCCTTCACTCAAACCTCCCTGAGCTGCCCCCATGGTCACCTTTGATATTGCTGA
 CGTGGAACGAGATGGAGAAGCAAGTGTGAAGAGAATCCTGAGTCAACAATGACGAAGATCTTACAGCC
 TCCTTGGAAAGCTTTTGGAGCTGGGTTATTACCACAAACATGCCTTCAACAGCTATCACAGTCGGTTCTACC
 AAGGCCTGCCCTGGGGAGTTAGCAGCCTCCCTCGATACTTAGGACTCCCCGGAGTCCACCCTCGACCTCC
 TCCTGCTGCAATGGCACTCAATAGGAGAAGCCGTTCCCTTGACAAATGCAGAGTCTCTGGAGCTGGAGCTC
 TCCAGTTCTCACCTAGCCAGGGTTACATGGAGTCTGATGAGCTCCAGGCCACCAGGAAGATTCAGATG
 AAGAAGGTGAAGAAGAGGAAGGAGAATGGGGTCCGGATAGTCCCTTGTCTCTACACTGAACCTCCAGG
 GGTCTATGACTGGCCCTCCCTGGGCTCACTGTCTTCCAGTGGGGCCAGGTCTTGTGGATGAGCCCT
 AATCAGTTGTATGAGCCCTTCAATCAGTCTTCTATGTGCAGGCAACCTGTTGTGTACCTCTGTGGCAA
 TGCCAGTGTGAGTCCAGGAAGAACACCTGGAGACTCTGTCTCAGCTAGCTCGACCTCGCACCCTACC
 CCTGCCCATGGGCCCTTGTCTATAACCTTCAATCACAGGCCCTCCAGAGTGGGAGGGCCAAGCCTCGGAT
 GTACTGCTGCCTGTAGATGAGCCAGTTGCTCTTCCATTTCTGGAGCCTCACTCAGTCTCAAGCCAAGC
 CTGTAGGTATCACCCATGGTATCCCTCAGCTGCCAGGGTGCAGCCTGAACCCCTTCCAGCTTCAACCCAA
 TCACTATCGAGCTTCAACCTTACCTGTCAAAGGAGAGGGGTGAGCAAGGTGCCTCTCTCTACCAGC
 TACTCCTCTACTGCCATGAATGGAACCTAGCCAAG

ACGCGTACGCGGCCGCTCGAG – GFP Tag – GTTTAA

Protein Sequence:

>MG222769 representing NM_175179
 Red=Cloning site Green=Tags(s)

MESQQDEAVQTKGASTSSDAQDQGAEKGAKNKTEATEGPTSEPPLSGPGRLLKKTAMKLFGGKKGICTLP
 SFFGGGRSKGSGKVSSKSLNKSHTDGLSEASQGPEDVVEETDLSTPLSKSSAQFPSSQSANGALEIG
 SKHKTSGETAIEKAGVEKVPVHKPKKSLKSFSSIRRHRKKGKTSADQSVPGAKELEGARTRSHVSS
 ISLPSSEEIFRDTRKENAKPQDAPGPKMSPAQVHFSPTEKAACKNPEKLRTRCASEFMQPKPVLEGGSL
 EEPHTSETGKVVAGEVNPNGPVGDQLSLLFGDVTSLKSFDSLTCGCDIIAEQDMSMTDSMASGGQRA
 NRDGTRKSSCLVYQGGGEEMALPDDDDNDDEEEEEEEEEEEEEEEEEEEEEEEEEEEEELEDEEEVKDG
 EENDDLEYLWASAIYPRFNMNLGYHTAISPSHQGYMLLDPVQSYPNLGLGELLTPQSDQQESAPNSDEG
 YYDSTTPGFEDDSGEALGLAHRDCLPRDSYSGDALYEFYEPDDSLEHSPGDDCLYDLRGRNSEMLDPFL
 NLEPFSSRPPGAMETEERLVTIQKQLLYWELRREQREAEACAREAHAREAYARDHTRESYGRNVRAR
 ETQALEAHSQEGRVQETKVRQEKPALEYQMRPLGPSVMGLVAGTSGGSQTSRGTTSAFPATSSSEPDWR
 DFRPLEKRFEGTCSKKDQSTCLMQLFQSDAMFEPDMQEANFGSPRKAYPSYSPPEEEEEEEKEGNAT
 VFSQALVEFTSNGNLFMSYSSDSDSSTFQNLPELPPMVTFDIADVERDGEKCEENPEFNDEDLTA
 SLEAFELGYHGHAFNSYHSRFYQGLPWGVSSLPRYLGLPGVHPRPPAAAMALNRRSRSLDNAESLELEL
 SSSHQAQGYMESDELQAHQEDSDEEGEEEGEWGRDSPLSLYTEPPGVYDWPWPHACPLPVGPGLAWMSP
 NQLYEPFNQSSYVQATCCVPPVAMPVSVPGTRTPGDSVSQLARPSHLPLMPGPCYNLQSQASQSGRAKPRD
 VLLPVDEPSCSSISGANSQSQAQPVGITHGIPQLPRVRPEPFQLQPNHYRASNLDSLKERGEGQASLSTS
 YSSTAMNGNLAK

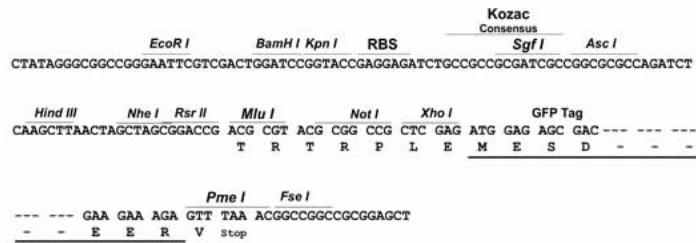
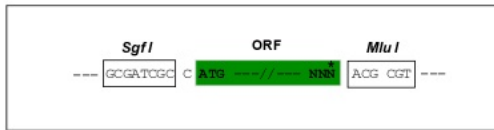
TRTRPLE – GFP Tag – V

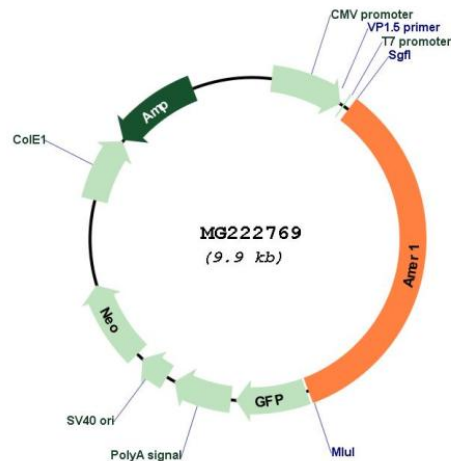
Restriction Sites:

SgfI-MluI

Cloning Scheme:

Cloning sites used for ORF Shutting:



Plasmid Map:


ACCN: NM_175179

ORF Size: 3396 bp

OTI Disclaimer: The molecular sequence of this clone aligns with the gene accession number as a point of reference only. However, individual transcript sequences of the same gene can differ through naturally occurring variations (e.g. polymorphisms), each with its own valid existence. This clone is substantially in agreement with the reference, but a complete review of all prevailing variants is recommended prior to use. [More info](#)

OTI Annotation: This clone was engineered to express the complete ORF with an expression tag. Expression varies depending on the nature of the gene.

Components: The ORF clone is ion-exchange column purified and shipped in a 2D barcoded Matrix tube containing 10ug of transfection-ready, dried plasmid DNA (reconstitute with 100 ul of water).

Reconstitution Method:

1. Centrifuge at 5,000xg for 5min.
2. Carefully open the tube and add 100ul of sterile water to dissolve the DNA.
3. Close the tube and incubate for 10 minutes at room temperature.
4. Briefly vortex the tube and then do a quick spin (less than 5000xg) to concentrate the liquid at the bottom.
5. Store the suspended plasmid at -20°C. The DNA is stable for at least one year from date of shipping when stored at -20°C.

RefSeq: [NM_175179.4](#), [NP_780388.2](#)

RefSeq Size: 8476 bp

RefSeq ORF: 3399 bp

Locus ID: 72345

UniProt ID: [Q7TS75](#)

Cytogenetics: X C3

Gene Summary:

Regulator of the canonical Wnt signaling pathway. Acts by specifically binding phosphatidylinositol 4,5-bisphosphate (PtdIns(4,5)P₂), translocating to the cell membrane and interacting with key regulators of the canonical Wnt signaling pathway, such as components of the beta-catenin destruction complex. Acts both as a positive and negative regulator of the Wnt signaling pathway, depending on the context: acts as a positive regulator by promoting LRP6 phosphorylation. Also acts as a negative regulator by acting as a scaffold protein for the beta-catenin destruction complex and promoting stabilization of Axin at the cell membrane. Promotes CTNNB1 ubiquitination and degradation. Involved in kidney development (By similarity).[UniProtKB/Swiss-Prot Function]