

Product datasheet for **MG222733**

Copa (NM_009938) Mouse Tagged ORF Clone

Product data:

Product Type:	Expression Plasmids
Product Name:	Copa (NM_009938) Mouse Tagged ORF Clone
Tag:	TurboGFP
Symbol:	Copa
Synonyms:	AU040324; xenin
Mammalian Cell Selection:	Neomycin
Vector:	pCMV6-AC-GFP (PS100010)
E. coli Selection:	Ampicillin (100 ug/mL)
ORF Nucleotide Sequence:	>MG222733 representing NM_009938 Red=Cloning site Blue=ORF Green=Tags(s)

TTTTGTAATACGACTCACTATAGGGCGGCCGGAATTCGTCGACTGGATCCGGTACCGAGGAGATCTGCC
GCC**CGATCGCC**

ATGCTAACCAAATTCGAGACGAAGAGCGCGGGTCAAAGGCCTTAGTTTTATCCTAAAAGACCCTGGA
TCCTGACCAGTTTACACAATGGGGTCATCCAGTTATGGGACTATCGGATGTGCACCCTAATTGACAAATT
TGATGAACATGATGGTCCAGTGCCTGGCATTGACTTCCATAAGCAGCAGCCACTGTTCTGCTCTGGAGGC
GATGATTATAAGATTAAGGTTTGAATTACAACTTCGGCGCTGCCTGTTACATTGCTCGGGCACTTGG
ATTATATCCGTACAACGTTTTTCCATCATGAATATCCTTGGATTCTGAGCGCCTCAGATGATCAGACCAT
TCGGGTGTGGAAGTGGCAGTCTAGAACCTGTGTCTGTGTGTTAACGGGGACAACCATTATGTAATGTGT
GCTCAGTTCACCCCTCTGAAGACCTGGTGGTATCAGCTAGCCTGGACCAGACTGTCGCGTTTTGGGATA
TTTCTGGTCTAAGGAAGAAAACTTGTCTCCTGGTGCCTGGAGTGGATCGGATGTGAGAGGAATAACTGGCGT
TGATCTGTTTGGAAACACAGATGCCGTGGTGAAGCATGTGCTAGAGGGTCATGACCGTGGAGTCAACTGG
GCTGCCTTCCACCCGACTATGCCCTTATTGTATCTGGGGCAGATGACCGGAAGTGAAGATCTGGCGTA
TGAATGAATCAAAGGCATGGGAGGTTGACACCTGCCGGGCCATTACAACAATGTGCTTGTGCTGTTTT
TCACCCTCGCCAAGAGTTGATCCTCAGCAATTCTGAAGACAAGAGTATTCGAGTCTGGGATATGTCTAAG
CGGACGGGGGTTTCAGACTTCCGTAGGGATCATGATCGTCTGGGTCTGGCTGCCATCCCAACTTA
ACCTCTTTGCAGCAGCCATGATGGTGGGATGATTGTATTTAAGCTGGAACGTGAGCGTCCAGCCTATGC
TGTTTCATGGTAACATGCTGCATTATGTAAGGACCGATTCTCCGTCAGCTGGATTTCAACAGCTCCAAA
GATGTAGCTGTGATGCAGTTGCGGAGCGGTTCTAAGTTTCCAGTATTCAACATGTCATACAATCCAGCAG
AAAACGCAGTGTGCTCTGCACCAGAGCAAGCAATCTAGAGAACAGTACCTACGACCTATACACCATCCC
CAAAGACGCAGACTCCCAGAACCCTGACGCCCTGAAGGGAAACGATCCTCAGGCCTGACAGCGGTTTGG
GTTGCTCGGAATCGGTTTGTCTCTAGATCGCATGCATTCACTTCTGATTAACCTGAAAAATGAGA
TCACCAAGAAAAATCCAGGTGCCAACTGTGATGAAATCTTCTATGCTGGTACAGGCAACCTCCTGCTTCG
GGATGCAGATTCCATCACACTTTGACGTCCAGCAGAAGCGAAGTCTGGCATCAGTAAAGATTTCCAAG



[View online »](#)

GTGAAATATGTTATCTGGTCGGCAGACATGTCTCATGTAGCGTACTGGCCAAGCATGCCATTGTGATCT
GTAACCGCAAGCTGGATGCTCTGTGAACATTCATGAGAACATTCGTGTCAAGAGTGGGGCCTGGGATGA
AAGTGGGGTGTATCTATACCACAAGCAACCACATCAAATATGCTGTCAACCTGGGGACCATGGGATT
ATCCGAACCTGGATTTACCCATCTATGTCACCAGAGTGAAGGGCAATAATGTATACTGCCTAGACAGAG
AGTGTGCTCCTCGGGTGTACCCATTGATCCCAGTGAAGTCAAGTCAAAGTGGCCCTGATCAACAGAAA
GTATGATGAGGTACTCCACATGGTGAGGAACGCTAAGCTGGTAGGCCAGTCAATCATCGCTTATCTCCAG
AAGAAGGGCTATCCTGAAGTGGCGTGCATTTTGTAAAGGATGAGAAAACTCGTTTCAGCCTGGCCCTGG
AGTGTGGAAACATTGAGATTGCTCTAGAGGCAGCCAAAGCCCTGGACGACAAGAAGTCTGGGAGAGCT
AGGAGAAGTGGCCCTGCTACAGGCAATCACCAATTGTAGAGATGTGCTATCAGCGCACAAAACTTT
GACAAACTTTCCTTCTGTACCTTATTACTGGCAACCTGGAGAAAACCTCGAAAAGATGATGAAGATCGCTG
AGATCCGAAAGGACATGAGTGGCCATTATCAGAATGCCCTATACCTAGGTGATGTGTGAGAGAGTACG
GATCCTGAAGAACTGTGGGCAGAAATCCCTAGCCTATCTCACAGCTGCTACCCATGGCTTAGATGAAGAA
GCCGAGAGCCTGAAGGAAACATTTGACCCTGAGAAGGAGACAATCCAGACATTGATCCTAATGCCAAGC
TGCTCCAGCCACCTGCACCTATCATGCCATTGGATACAAACTGGCCGTTACTGACCGTGTCAAAGGGTT
CTTTGAAGGCTCCATTGAAGCAAGGGGAAGGGAGGAGCATTGGCTGCTGACATTGACATCGACTGTGA
GGCACTGAAGGCTGGGGAGAGGACGAGCTGCAGCTGGATGAAGATGGGTTTGTGGAGGCTCCAGAAG
GTTTGGGAGAGGATGTTCTTGGAAAGGGACAAGAAGAAGGAGGTGGCTGGGATGTAGAAGAAGATTTGGA
GCTCCCACCTGAGCTGGATGTACCTCTGGGGTGTCTGGTAGTGTGAAGATGGGTTCTTTGTGCCCCCA
ACCAAGGGAACAAGCCCAACGCAATCTGGTGCATAACTCCCAGCTTCCAGTAGATCACATCTTGGCAG
GTTCTTTTGAACAGCCATGCGGCTTCTCCATGATCAGGTGGGAGTAATCCAGTTTGGCCCTATAAGCA
ACTGTTCCACAGACATATGCCCGAGGCCGACCACCTATCAAGCGCTGCCCTGCTTGCCTCCATGTAT
AGTTACCCTAATCGCAATTGGAAGGATGCAGGGCTAAAGAATGGAGTACCAGCTGTAGGCCTAAAGCTTA
ATGACCTGATCCAACGTTTGCAGCTGTGTTATCAGCTCACCACAGTTGGCAAGTTGAGGAAGCTGTGGA
AAAATTCGTTCCATCCTACTCAGTGTGCTCTTCTTGTGGACAATAAACAGGAGATTGCAGAGGCC
CAGCAGCTCATACCATTTGCCGTGAATACATTGTGGGTTTGTGCATGGAGATAGAAAGGAAGAAGCTAC
CTAAGGAGACCCTAGACCAGCAGAAGCGCATCTGTGAGATGGCAGCCTACTTCACACACTCAAATCTGCA
GCCTGTGCATATGATCTTGGTGTGCGGACAGCCCTCAACCTTTTCTTCAAGCTCAAGAACTTCAAGACA
GCCGCCACCTTTGCCGACGCCTGCTGGAACCTGGGCCCAAGCCTGAAGTAGCTCAGCAGACAAGAAAA
TCTTATCTGCCTGTGAGAAAAACCCACAGATGCCTGCCAGCTCAATTATGACATGCACAACCCCTTTGA
CATTTGTGCTGCATCTTACCGGCCATCTACCGTGGAAAACAGTGGAGAAGTGTCCACTCAGTGGGGCC
TGCTATCCCCTGAGTTCAAGGGGCAAATCTGCAGGGTCACTACAGTGACAGAGATTGGCAAAGATGTGA
TTGGGCTGAGGATCAGTCTCTCAGTTTCGC

ACGCGTACGCGGCCGCTCGAG – GFP Tag – GTTTAA

Protein Sequence: >MG222733 representing NM_009938
 Red=Cloning site Green=Tags(s)

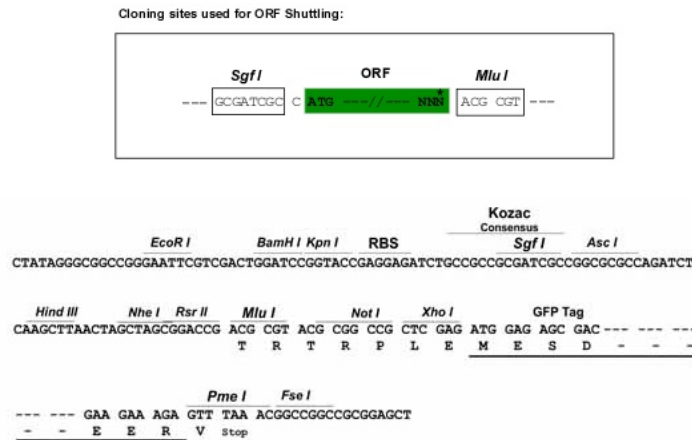
MLTKFETKSARVKGLSFHPKRPWILTSLHNGVIQLWDYRMCTLIDKFDEHDGPVRGIDFHKQQPLFVSGG
 DDYKIKVWNYKLRRLFTLLGHLDYIRTTFFHHEYWPILSASDDQTIIRVWNWQSRTCVCLTGNHNYVMC
 AQFHPSEDLVVSASLDQTVRVWDISGLRKKNLSPGAVESDVRGITGVDLFGTTDAVVVKHVLEGHDRGVNW
 AAFHPTMPLIVSGADDRQVKIWRMNEKAWEDVTCRGHYNNVSCAVFHPRQELILSNSEDKSIRVWDMK
 RTGVQTFRRDHDRFVWLA AHPNLNLFAAGHDGGMIVFKLERERPAYAVHGNMLHYVKDRFLRQLDFNSSK
 DVAVMQLRSGSKFPVFNMSYNPAENAVLLCTRASNLENSTYDLYTIPKDADSQNPDAPEGKRSSGLTAVW
 VARNRFAVLDRMHSLLIKLNKNEITKKIQVPCDEIFYAGTGNLLLRDADSITLFDVQQRKTLASVKISK
 VKYVIWSADMSHVALLAKHAIVICNRKLDALCNIHENIRVKSAGWDESGVFIYTTSNHIKIVAVTTGDHGI
 IRTLDPPIYVTRVKGNNVYCLDRECRPRVLTIDPTEFKFKLALINRKYDEVLHMVRNAKLVGQSIIAYLQ
 KKGYPEVALHFVKDEKTRFSLALECGNIEIALEAAKALDDKNCWEKLEGEVALLQGNHQIVEMCYQRTKNF
 DKLSFLYLITGNLEKLRKMMKIAEIRKDMSGHYQNALYLGDVSEVRILKNCGQKSLAYLTAATHGLDEE
 AESLKETFDPKETIPDIDPNAKLLQPPAPIMPLDTNWPLLTVSKGFFEGSIASKGKGALAADIDIDTV
 GTEGWGEDAELQLDEDGFVEAPEGLGEDVLGKGQEEGGWVDEEDELPELDPVSGVSGSAEDGFFVPP
 TKGTSPTQIWCNNSQLPVDHILAGSFETAMRLLHDQVGVIQFGPYKQLFLQTYARGRTTYQALPCLPSMY
 SYPNRNWKDAGLKNVPAVGLKLNLDLIQRLQLCYQLTTVGKFEAEVEKFRSILLVPLLVDNKQIEIAEA
 QQLITICREYIVGLCMEIERKKLPKETLDQQKRICEMAAYFTHSNLQPVHMILVLRALNLFKLNKFKT
 AATFARRLLELGPKEVAQQTRKILSACEKNPTDACQLNYDMHNPFDICAASYRPIYRGPKVEKCPLSGA
 CYSPEFKGQICRVTTVTIEIGKDVIGLRISPLQFR

TRTRPLE - GFP Tag - V

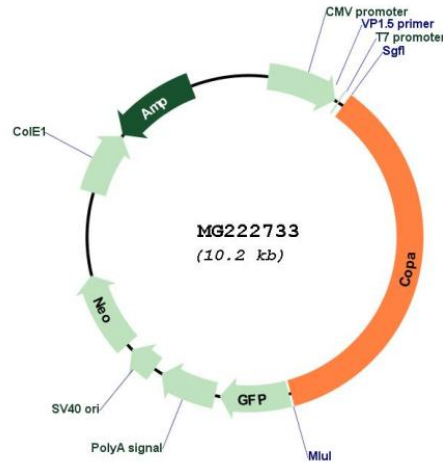
Restriction Sites:

Sgfl-MluI

Cloning Scheme:



Plasmid Map:



ACCN: NM_009938

ORF Size: 3672 bp

OTI Disclaimer: Due to the inherent nature of this plasmid, standard methods to replicate additional amounts of DNA in E. coli are highly likely to result in mutations and/or rearrangements. Therefore, OriGene does not guarantee the capability to replicate this plasmid DNA. Additional amounts of DNA can be purchased from OriGene with batch-specific, full-sequence verification at a reduced cost. Please contact our customer care team at custsupport@origene.com or by calling 301.340.3188 option 3 for pricing and delivery.

The molecular sequence of this clone aligns with the gene accession number as a point of reference only. However, individual transcript sequences of the same gene can differ through naturally occurring variations (e.g. polymorphisms), each with its own valid existence. This clone is substantially in agreement with the reference, but a complete review of all prevailing variants is recommended prior to use. [More info](#)

OTI Annotation: This clone was engineered to express the complete ORF with an expression tag. Expression varies depending on the nature of the gene.

Components: The ORF clone is ion-exchange column purified and shipped in a 2D barcoded Matrix tube containing 10ug of transfection-ready, dried plasmid DNA (reconstitute with 100 ul of water).

- Reconstitution Method:**
1. Centrifuge at 5,000xg for 5min.
 2. Carefully open the tube and add 100ul of sterile water to dissolve the DNA.
 3. Close the tube and incubate for 10 minutes at room temperature.
 4. Briefly vortex the tube and then do a quick spin (less than 5000xg) to concentrate the liquid at the bottom.
 5. Store the suspended plasmid at -20°C. The DNA is stable for at least one year from date of shipping when stored at -20°C.

RefSeq: [NM_009938.1](#)

RefSeq Size: 4629 bp

RefSeq ORF: 3675 bp

Locus ID: 12847

UniProt ID: [Q8CIE6](#)

Cytogenetics: 1 79.54 cM

Gene Summary: The coatomer is a cytosolic protein complex that binds to dilysine motifs and reversibly associates with Golgi non-clathrin-coated vesicles, which further mediate biosynthetic protein transport from the ER, via the Golgi up to the trans Golgi network. Coatomer complex is required for budding from Golgi membranes, and is essential for the retrograde Golgi-to-ER transport of dilysine-tagged proteins. In mammals, the coatomer can only be recruited by membranes associated to ADP-ribosylation factors (ARFs), which are small GTP-binding proteins; the complex also influences the Golgi structural integrity, as well as the processing, activity, and endocytic recycling of LDL receptors (By similarity).[UniProtKB/Swiss-Prot Function]