

Product datasheet for **MG222731**

Ltk (NM_008523) Mouse Tagged ORF Clone

Product data:

Product Type:	Expression Plasmids
Product Name:	Ltk (NM_008523) Mouse Tagged ORF Clone
Tag:	TurboGFP
Symbol:	Ltk
Mammalian Cell Selection:	Neomycin
Vector:	pCMV6-AC-GFP (PS100010)
E. coli Selection:	Ampicillin (100 ug/mL)



[View online »](#)

ORF Nucleotide Sequence:

>MG222731 representing NM_008523
 Red=Cloning site Blue=ORF Green=Tags(s)

TTTTGTAATACGACTCACTATAGGGCGGCCGGGAATTCGTCGACTGGATCCGGTACCGAGGAGATCTGCC
 GCC**GCGATCGCC**

CTGGAGACCCGCGCGCGCGCCGGCAGCGCGGGAGAGAGGGCGCGGAGCGCGGTGATACTTCTGAGT
 CTGACCTCCTCTGGGCTGATGGGAAGATGGCACATCCTTTGTCCACCCAGTGGTGAGCTCTACCTACA
 GCCTCTGGCAGTCACAGAGGGCCATGGGAGGTGGAGATCCGAAAAGCATCCCAACTGCAGTCACTGCCCT
 TTCAAAGACTGCCAGTGGCAGGCAGAGCTCTGGACGGCCGAATGCACGTGCCAGAGGGCACGGAGCTAG
 CTGTGGATAATGTCACCTGCATGGACCTGCCAACCACCGCAAGCCCTCTGATCCTGATGGGAGCTGTAGT
 GGCAGCCTTGGCACTGAGTCTCCTAATGATGTGTGCAGTCTGATTCTAGTGAACCAGAAGTGTACGGGC
 CTGTGGGGACCAGGCTGCCAGGCCCTGAGCTTGAGCTAAGCAAGCTTCGATCCTCTGCCATCAGGACAG
 CACCCAACCCCTTACTATTGTGAGGTGGGACTCAGTCTGCCAGCCCTGGCCCTTTGCCCCAGGGCTCAC
 TGAGGTTTCACCAGCCAATGTCACCTCTACTCAGAGCCCTTGCCATGGTGCCTTTGGGGAAGTGTACGAG
 GGACTAGTGACTGGTCTTCTGGGGACTCCAGTCTCTTCCAGTGGCTATTAAGACTCTGCCAGAGCTCT
 GCTCCCATCAGGATGAGCTGGATTTTCTCATGGAGGCTCTGATCATCAGCAAGTTCAGCCATCAGAACAT
 TGTACGCTGTGTGGGCTCAGCTTTCGGTCTGCCCGCGCCTCATTCTGCTGGAGCTGATGTCTGGTGGG
 GACATGAAGAGCTTTTTGAGGCACAGCAGACCACCCAGGACAACCTGGCACCTCTGACCATGCAGGACC
 TATTGCAGCTGGCCAGGATATAGCCCAGGGCTGCCACTACCTGGAGGAAAATCACTTCATTACAGAGA
 CATTGCTGCCGTAACCTGTCTGCTTAGCTGCAGTGGAGCCAGCCGAGTGGCCAAGATTGGAGATTTGGA
 ATGGCAAGAGATATCTACCAGGCCAGTTATTATCGCAAGGGTGGCCGGACCTTCTCCAGTCAAGTGA
 TGCCGCCAGAAGCTCTCCTGGAGGGCTTTTACATCCAAGACAGACTCCTGGTCTTTGGGGTCTCTGCT
 CTGGGAGATCTTCTCACTGGGGTATATGCCTACCCTGGACATACCAACCAGGAGTTCTAGACTTCATT
 GCCACAGGGAACAGGATGGACCTCCTAGAACTGTCTGGGCCAGTGTACCGAATCATGACCCAGTGT
 GGCAGCATCAGCCGAGCTCCGCCCTGACTTTGGCAGCATCTTGAACCGATTCACTACTGCACTCAGGA
 CCCTGATGTGCTGAACTCACCCCTGCCCGTGAACCTGGGCCATTCTAGAGGAGGAAGAGGCCCTCAGG
 CTGGGAAACAGGTCAGTGGAGGGTCTTAGATCCCCAAAGCCCTAGAGCTGAGTTCTCAGAACTGAAGA
 GCTGGGGAGGAGCCCTTCTGGCTTGGCTGCCCTCTGGCTCAAGACCCTCAAACCCAGGTGCCTCCA
 ACCTCAGAACATTTGAACCCACCTATGGCTCCTGGACCCCAAGGGGCCCCAGGGTGAAGATACAGGC
 ATTGAACACTGCAATGGCTCCTCCTCAAGTTCATTCCAGGCATCCAG

ACGCGTACGCGGCCGCTCGAG - GFP Tag - GTTTAA

Protein Sequence:

>MG222731 representing NM_008523
 Red=Cloning site Green=Tags(s)

LETAAAPGSGRGAAGDTSDDLWADGEDGTSFVHPSGELYLQPLAVTEGHGEVEIRKHPNCSHCP
 FKDCQWQAEWLTAECTCPEGTELAVDNVTAMDLPPTASPLILMGAVVAALALSLMMCAVLILVNQKCQG
 LWGTRLPGPELELSKLRSSAIRAPNPYYCQVGLSPAQPWPLPPGLTEVSPANVTLLRALGHGAFGEVYE
 GLVTGLPGDSSPLPVAIKTLPELCSHQDELDFLMEALIIISKFSHQNIVRCVGLSFRSAPRILILELMSGG
 DMKSFLRHSRPHPGQLAPLTMQDLLQLAQDIAQGCHYLEENHF IHRDIAARNCLLSCSGASRVAKIGDFG
 MARDIYQASYRKGGRITLLPVKWPPEALLEGLFTSKTDSWSFGVLLWEIFSLGYMPYPGHTNQEVLDI
 ATGNRMDPPRNCPPVYRIMTQCWQHQPRLPDFGSILERIYCTQDPDVLNSPLPVEPGPILEEEEA
 LGNRSLEGLRSPKPLELSSQNLKSWGGLLGSWLP SGLKTLKPRCLQPQNIWNPTYGSWTPRGPQGEDTG
 IEHCNGSSSSSIPGIQ

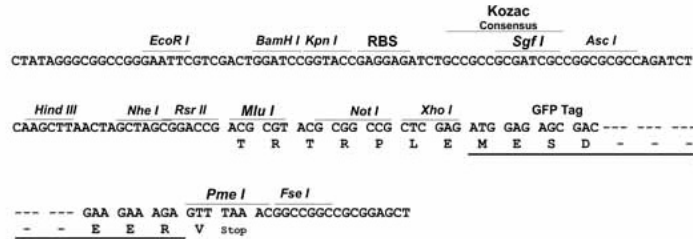
TRTRPLE - GFP Tag - V

Restriction Sites:

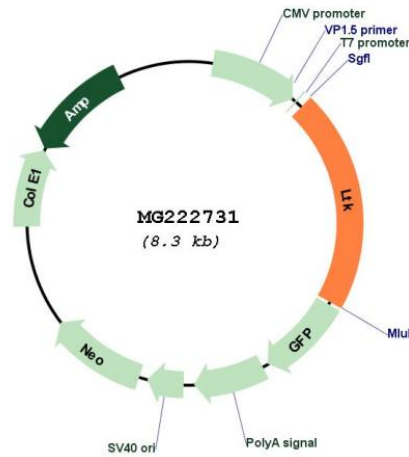
Sgfl-MluI

Cloning Scheme:

Cloning sites used for ORF Shutting:



Plasmid Map:



ACCN:

NM_008523

ORF Size:	1728 bp
OTI Disclaimer:	The molecular sequence of this clone aligns with the gene accession number as a point of reference only. However, individual transcript sequences of the same gene can differ through naturally occurring variations (e.g. polymorphisms), each with its own valid existence. This clone is substantially in agreement with the reference, but a complete review of all prevailing variants is recommended prior to use. More info
OTI Annotation:	This clone was engineered to express the complete ORF with an expression tag. Expression varies depending on the nature of the gene.
Components:	The ORF clone is ion-exchange column purified and shipped in a 2D barcoded Matrix tube containing 10ug of transfection-ready, dried plasmid DNA (reconstitute with 100 ul of water).
Reconstitution Method:	<ol style="list-style-type: none">1. Centrifuge at 5,000xg for 5min.2. Carefully open the tube and add 100ul of sterile water to dissolve the DNA.3. Close the tube and incubate for 10 minutes at room temperature.4. Briefly vortex the tube and then do a quick spin (less than 5000xg) to concentrate the liquid at the bottom.5. Store the suspended plasmid at -20°C. The DNA is stable for at least one year from date of shipping when stored at -20°C.
RefSeq:	NM_008523.2 , NP_032549.2
RefSeq Size:	2269 bp
RefSeq ORF:	1731 bp
Locus ID:	17005
Cytogenetics:	2 59.97 cM
Gene Summary:	The protein encoded by this gene is a member of the ros/insulin receptor family of tyrosine kinases. Tyrosine-specific phosphorylation of proteins is a key to the control of diverse pathways leading to cell growth and differentiation. Four alternatively spliced transcript variants encoding different isoforms have been described for this gene. These transcripts are expressed in a tissue-specific manner in lymphocytes, brain and neuroblastoma cells, and the encoded isoforms exhibit different subcellular localization. The lymphocyte and brain specific variants initiate translation at non-AUG (CUG) start codons. [provided by RefSeq, Jul 2008]