

Product datasheet for **MG222722**

Ecm1 (NM_007899) Mouse Tagged ORF Clone

Product data:

Product Type:	Expression Plasmids
Product Name:	Ecm1 (NM_007899) Mouse Tagged ORF Clone
Tag:	TurboGFP
Symbol:	Ecm1
Synonyms:	A1663821; p85
Mammalian Cell Selection:	Neomycin
Vector:	pCMV6-AC-GFP (PS100010)
E. coli Selection:	Ampicillin (100 ug/mL)



[View online »](#)

ORF Nucleotide Sequence:

>MG222722 representing NM_007899
 Red=Cloning site Blue=ORF Green=Tags(s)

TTTTGTAATACGACTCACTATAGGGCGGCCGGAATTCGTCGACTGGATCCGGTACCGAGGAGATCTGCC
 GCC**CGGATCGCC**

ATGGGGACCGTATCCAGAGCAGCCTTGATCTTGGCCTGCTTGGCTTCTGCTGCCTCTGAGGGAG
 CCTTCAAGGCTTACAGACCAGCGAGAGATGACGCCAGAGCGCCTCTCCAGCACCTCCATGAAGTAGGTTA
 TGCAGCACCCCTTCCCCACCACAAACCCGGAGACTCCGAGTTGACCACTCTGTAACCTCTCTGCATGAC
 CCTCCCCTCTTTGAGGAACAAAGAGAAGTGCAGCCCCCTTCTCTCCAGAAGACATCCCTGTGTACGAGG
 AAGACTGGCCCACTTTCTAAACCTAATGTAGATAAAGCTGGTCTGCTGTCCCAAGAAGCCATCCC
 CCTGCAGAAAGAGCAGCCCCCTCCCAAGTCCATATTGAACAGAAGGAAATAGACCCGCCTGCCAGCCT
 CAGGAGGAGATTGTCCAGAAAGAGGTGAAGCCACACACCTTGGCGGGCCAGCTCCCTCCAGAGCCCCGA
 CTTGGAATCCAGCCCGTCACTGCCAGCAGGACGGAGAGGTGTCTGGGGCCACCGCTGGATGGCTTCCC
 TCCTGGACGGCCTTCTCCAGACAATCTGAAGCAGATCTGCCTTCTGAGCGTCAGCATGTGATCTACGGC
 CCCTGGAACCTGCCGAGACTGGCTACTCTCACCTTAGTCGCCAGGGAGAGACCCCAATGTGCTGGAGA
 CCGGATACTCCCCTGCTGTCGCTGCCGACGACACAAACCCGCCTAGACTGTTTGAAGCTTGTGTGGGA
 GGATGCAATGACCCAATTTGTGAGGCCGAATCTCTGTCAAGACCCGCCCCACCTGTGCTGCAGACTG
 CGTGGGGAGGAGCGATTCTTTGCTTCCAGAAGGAAGCTCCTCGCCAGACTACCTGCTCCGACCCTGCC
 CCGTCCACCAGAAATGGCATGTCTCAGGGCCCCAGTTGCCTTTCCCCCGGGGTTGCCACACCGGACAA
 TGTCAAAAACATCTGTCTCCTGAGACGCTTCCGCGCGTGCCACGCAACCTCCAGCTACTGACGCCATC
 CAGAGGCAGCTGCAGGCTCTGACTCGGCTGGAGACGGAGTCCAGCGCTGCTGCCCCAGGGCCACAACC
 ACATTTGCACATGGAAGGCTGGGAGGTTACCTGGATGGATGATGCGAGCGGGAGCTGGCTATAAAGGA
 CCACCCCACTCGTGTGCCACTACCCTCTAGTCTGCCCGTGATGAGTGCTTGCACCCTAGCTCCC
 TATCCCAACTATGACCGGATATCTTGACCCTTGACCTCAGCCGAGTCAACCCCAACCTCATGGGCCAGC
 TCTGTGGAAGTGAAGGGTCTTAGCAAGCATAAACAGATTCCGGGGCTGATCCAGAATATGACCGTCCG
 CTGCTGCGAGTTCCATATCCAGAACAGGCTGCTGCGGCGAAGAGGAGAACTGGCCTTTCATCGAGAAC
 CTCTGTGGTCCCCGGAGGAATTCGTGGAAGACCTGCCCTCTGCTGTGACCTGTCTCCTGAAGATAAGC
 AAATCAACTGCTTCAATACCAACTACCTGAGGAACGTGGCTTTAGTGGCTGGAGACTGGGAATGCCAC
 TGGCTTGGGGAGCAGGGCCCAACTCGGGAACAGATGCCAACCCCGCCCTGGTCCAAGGAAGAA

ACGCGTACGCGGCCGCTCGAG - GFP Tag - GTTTAA

Protein Sequence:

>MG222722 representing NM_007899
 Red=Cloning site Green=Tags(s)

MGTVSRAALILACLALASAASEGAFKASDQREMTPERLFQHLHEVGYAAPPSPPTRRRLVDHSVTLHD
 PPLFEEQREVQPPSPEDIPVYEDWPTFLNPNVDKAGPAVPQEAIPLQKEQPPPVHIEQKEIDPPAQP
 QEEIVQKEVKPHTLAGQLPPEPRTWNPARHCQQRRGVWGHRLDGFPPGRSPDNLKQICLPERQHVIYG
 PWNLPQTGYSHLSRQGETLNVLETGYSRCCRSDTNRLDCLKLVWEDAMTQCEAEFSVKTRPHLCCRL
 RGEERFSCFQKEAPRPDYLLRCPVHQNGMSSGPQLPFPPLPTPDNVKNICLRRFRAVPRNLPAIDAI
 QRQLQALTRLETEFORCCRQGHNHTCTWKAWEGTLDGYCERELAIKTHPHSCCHYPPSPARDECFAHLAP
 YPNYDRDILTLDLSRVTPNLMGQLCGSGRVL SKHKQIPGLIQNMTVRCCELPYPEQACCGEEEKLAFIEN
 LCGPRRNSWKDPALCCDLSPEDKQINCFTNYLRNVALVAGDTGNATGLGEQGPTRGTDANPAPGSKEE

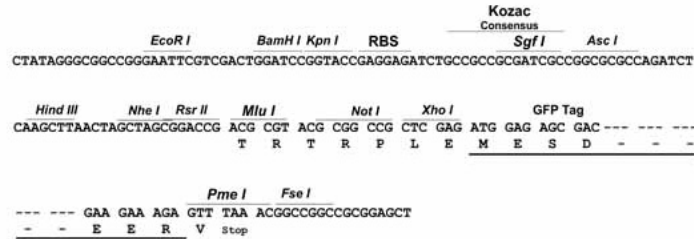
TRTRPLE - GFP Tag - V

Restriction Sites:

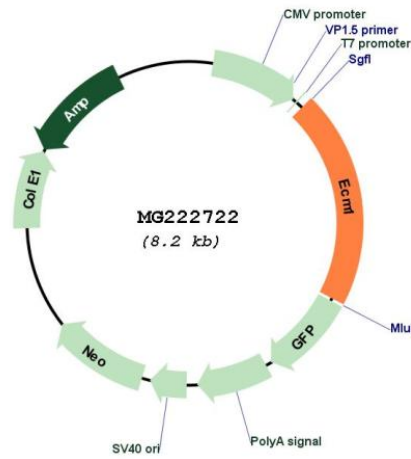
Sgfl-MluI

Cloning Scheme:

Cloning sites used for ORF Shutting:



Plasmid Map:



ACCN:	NM_007899
ORF Size:	1677 bp
OTI Disclaimer:	The molecular sequence of this clone aligns with the gene accession number as a point of reference only. However, individual transcript sequences of the same gene can differ through naturally occurring variations (e.g. polymorphisms), each with its own valid existence. This clone is substantially in agreement with the reference, but a complete review of all prevailing variants is recommended prior to use. More info
OTI Annotation:	This clone was engineered to express the complete ORF with an expression tag. Expression varies depending on the nature of the gene.
Components:	The ORF clone is ion-exchange column purified and shipped in a 2D barcoded Matrix tube containing 10ug of transfection-ready, dried plasmid DNA (reconstitute with 100 ul of water).
Reconstitution Method:	<ol style="list-style-type: none">1. Centrifuge at 5,000xg for 5min.2. Carefully open the tube and add 100ul of sterile water to dissolve the DNA.3. Close the tube and incubate for 10 minutes at room temperature.4. Briefly vortex the tube and then do a quick spin (less than 5000xg) to concentrate the liquid at the bottom.5. Store the suspended plasmid at -20°C. The DNA is stable for at least one year from date of shipping when stored at -20°C.
RefSeq:	NM_007899.2 , NP_031925.2
RefSeq Size:	1900 bp
RefSeq ORF:	1680 bp
Locus ID:	13601
UniProt ID:	Q61508
Cytogenetics:	3 40.91 cM
Gene Summary:	Involved in endochondral bone formation as negative regulator of bone mineralization. Stimulates the proliferation of endothelial cells and promotes angiogenesis. Inhibits MMP9 proteolytic activity (By similarity).[UniProtKB/Swiss-Prot Function]