

Product datasheet for **MG222718**

Ltbp4 (NM_175641) Mouse Tagged ORF Clone

Product data:

Product Type:	Expression Plasmids
Product Name:	Ltbp4 (NM_175641) Mouse Tagged ORF Clone
Tag:	TurboGFP
Symbol:	Ltbp4
Synonyms:	2310046A13Rik
Mammalian Cell Selection:	Neomycin
Vector:	pCMV6-AC-GFP (PS100010)
E. coli Selection:	Ampicillin (100 ug/mL)
ORF Nucleotide Sequence:	>MG222718 representing NM_175641 Red=Cloning site Blue=ORF Green=Tags(s)

TTTTGTAATACGACTCACTATAGGGCGGCCGGAATTCGTCGACTGGATCCGGTACCGAGGAGATCTGCC
GCC**CGATCGCC**

ATGCGCCGGCCTGGCCTCGGCGGCCCTGCCCCCTCTTGCTGCTGCTGCTGCCAGCCGCCACATCTG
CTAGCGGCTCCAGTCCCAGCCCCAGCCCCAGCCCCATCGAGAAAGCGGTGGTCCCAGCCACCAGGCCGG
TGTTGCTGCCTGCTACTGCTGCCTAGACCAGACACCTAAGAGTAGCCGCTGCACCCGAGCTTCTGCAGG
GTCCGGAAGTCCCACTGCCAAGTGCACAGGTCTAGAGGGGTGCTGACCCCAACACCTTCGGTGCCCA
GCCCCAGCCGAGTCCCCTGGAGAAGAGTCAGGTATCCCTCAACTGGCAGCCACTGACTTTCAGGAGGC
CCGAGCTCTGCTGAGGCAAAGGCCGCCCGAGGGCCGTGGGCCCGGGCATTGCTGAAAAGAAGGCCCCCA
CATCGCGCCCCTGCCGGCCAGGCCCGGGTCTATGTCCCTTGATCTGTCAACCGTGGTGTGTGTGTGA
AGCCTGATCGCTGCCTTTGCCCCCGGACTTCGCTGGCAAATTCTGCCAATTGCATTCTTCGGGGCCCCG
GCCCCCGGCCAGCCATGCCGGGCTTACCCGCTCCGTTTATACAATGCCACTAGCCAACCACCCGCGAT
GATGAACACGGAGTAGCATCGATGGTGAGCGTGACGTTGGAGCACCCCTCAGGAGGCATCAGTGGTGGTGC
ACCAAGTGAACGTGTGTGCGGCCCTGGGAGGAGGCGAACCTGAAGCCCTAGCCAGGGCTGAAGCGGC
GGCACGGGCGGAGGCGGCCGCCCTACACAGTGTGCGCACAGAGCGGCCACCGGAGGACGGCTACTCA
GACGCCCTCCGGTTCGGTTACTGTTTTAGAGAACTGCGCGAAGCGAATGTGCATCGCCGCTGCCAGGG
TCCGGACGAGGAAGTATGCTGCCGAGGAGAGGGCTTGGCTGGGGTGTTCATGATTGTACCCCGTGCCG
GGAACACCTGAGGAACCTCAACCAAGTGTGAGTGGCCCAAATGGACCTTGTCCACCCGGCTTCGAGAGATT
AATGGGTCTGTGTAGATGTGGATGAGTGCACCAGGTTGGCGTTGCCAACCGGGGAGTGTGCCAACCA
CTCGTGGCGGCTACACGTGTGTATGTCCGACGGTTTCTCCTGGACTCTCCCGCAGCAGCTGCATCTC
CCAACACGTGATCTCCGAGGCAAAGGGGCCCTGCTACCGAGTGTGCATGATGGCGGATGCTCGTGCC
ATTCTTCGAAATATACCAAACAGATCTGCTGTAGCCGTGTGGCAAGGCGTGGGGCCGAGGCTGCC
AGCTCTGTCCACCTTATGGTTCAGAGGGTTTTCGGGAGATCTGTCCAGCTGGCCCTGGCTACCACTATTC
AGCTTCTGACCTCGATACAACACCAGACCCTAAACCAGGATCCACCTCGAGTGACCTTAATCAGCCA



[View online »](#)

CGTGTTCCACCAGCCACCCCTCGGCCACCTACAGGCTTTCTGCCTACTCGTCGACCTGAGCCCCGCCCTG
 ACCCTGGGCCACAGCCTGAACCCCGGCCTCGGCCTGAACCCCGGCCTCGGCCTGAATCCCAGCCTCGGC
 TGAACCCCGGCCTCGGCCTGAACCCCGGCCTCAGCCTGAATCCCAGCCTAGGCCTGAATCCCAGCCTCGG
 CCTGAATCCCAGCCTTGGCCTGAATTTCCCTGCCAGCATCCCTGCTTGGACCGGTCCAGAGATTCTG
 AATCAGGTCCCTCTTCCAGCATGTGTACAGGAAATCCCAGGTTTGTGGTCTGGACGCTGCGTTCTCG
 GCCAAGCGGTACACTTGTGCGTGCGACCCAGGTTTCCGGCTCGGCCCCAGGCCACTCGCTGCATTGAC
 ATAGATGAATGTGCGCCGCTCCCTACACCTGTGCTCCTGGGCGTTGCGAGAATACACCAGGCAGTTCCT
 GCTGCGTGTGCGGCACGGGCTTCCAAGCAGGCCCGGGCTACAGAGTGCCTGGATGTGGACGAGTGCCG
 CCGCGTGCCGCCCGCTGTGACCGCGGGCGCTGCGAGAACACGCCAGGCAGTTTCTATGTGTGTGCC
 GCCGGTACCAGGCAGCACCGCACGGAGCCAGCTGCCAGGATGTGGATGAATGCACCCAGAGCCAGGCC
 TCTGTGGTGGGGCTGCGAAAACCTGCCGGCTCTTCCGCTGTGTTTGGCCGGCTGGCTTCCGGGG
 CTCGGCGTGTGAAGAAGATGTGGATGAATGTGCCAGCAGCCTCCGCTTGGCGGCCAGGCCGCTGCGAC
 AACACCGCGGTTCTGTTCCACTGTGCTGCCAGCTGGCTTCGATCCCAGGACCAGGAGCCCTGCC
 AAGATGTGGATGAATGTTCCCGAGCCCTCGCCTTGTGCTATGGCCGCTGTGAGAACACGGAAGCGAG
 CTTCAAGTGTGTCTGCCGACAGGCTTCCAACCAACGCTGCGGGCTCCGAGTGCAGGATGTGGATGAG
 TGTGAGAACCGCTTGGCGTGTCCAGGGCAGGAGTGTGAACTACCCGGGCTCCTTCCAGTGCCGGGCT
 GCCCTGTTGGGCACCACCTGCACCGTGGCAGATGTACTGATGTGGATGAATGCAGTTCGGGCACCCCTTG
 TGGTCTCCATGGCCAGTGACAAAATACTAAAGGCTCCTTCCACTGCAGCTGCTCGACAGGTTACCGGGCG
 CCATCTGGTCAACCTGGGCTTGTGCGACATAAATGAGTGTCTGGAAGGCGACTTCTGCTTCCCCACG
 GAGAGTGCTCAACACTGATGGCTCCTTACCTGTACCTGTGCCCTGGTACCAGGCTGGACCTCGTGG
 AGCATCTGTCTGGACGTGGACGAGTGCAGCGAAGAGGATCTTGGCAGAGCGGCATCTGTACCAACT
 GACGGCTCCTTCGAGTGCATCTGTCTCCTGGACACCGCGTGGCCCTGACCTTGCCTGCCTTGACA
 TTGACGAGTGTGTAACGGGGACCTGCCCTGTGCGGGTCTCAGCGTGTGAAAATCTCCTGTTCTCTA
 CCGCTGTGTGCGGGACTGCGATCCAGGTTACCACCCCGGCTGAGGGCACCTGTGATGACATTGATGAG
 TGCCGAGAATACGGCTCTGCGATTTGTGGTGGCCAGCGCTGTGAGAACACCCCGGCTCCTACCGTGCA
 CACCAGCTGCGACCCTGGTATCAGCCTACACCAGGGGGCGGGTCCAAGATGTGGATGAATGCCGAA
 CCGGTCTTCTGCGGGCCCATGCTATGTGCCAGAATCTGCCTGGTCTTCCAGTGCCTGTGACCAA
 GGCTACGAAGGGGACGGGACGGACGCTACTGCGTGGATGTGAATGAGTGTGAGACTACAGGGCGTGT
 GTGGCTCCGCGTGTGTGAAAATGTTGAAGGCTCCTTCTGTGTGTCTGCCCAATAGCCCTGAGGAATT
 TGATCCCATGACTGGACGCTGTGTTCCCCACGGGCTCCTGCAGGCAGTTCCTGGCTCCAGCCCCAA
 GCACCTGCCAGCCCCAGTCTTCCAGCCAGGCCACCAGCCCTCCCCACCTCGAAGACCCAGCCCTCCCA
 GGCAGGGTCCCCTGAGCAGTGGACGTCGCGAGTCTACTTTGATACAGCCGCTCCAGATGCGTGTGACAA
 TATCTTGGCCGAAACGTGACGTGGCAGGAGTGTGCTGTACTGTGGGAGAAGGCTGGGGCAGCGGCTGC
 CGCATCCAACAGTGCCCGGGCACCGAGACAGCTGAATACCAGTCAATTGTGTCTCACGGCCGGGGTACC
 TGGTGCCAGTGGAGACCTGAGTGCCCGGAGAGATGTGGACGAATGCCAATCTTCCAGGACCAGGTGTG
 CAAGAGCGGAGTGTGTGAACACGGCCCCAGGCTACTTGTGCTATTGCAGCAACGGGTTCTACTATCAT
 GCACACAGGCTGGAGTGCCTGATAATGACGAATGTGCGGACGAGGAGCCTGCTTGTGAAGTGGCCGCT
 GCGTCAACACGGTGGGCTCTTACCACTGACTGCGAGCCCCACTGGTGTGGACGCTCCCGGCGACG
 CTGGCTCTCCAACGAGAGCCAGAGCCTGGATGACAACTAGGAGTGTGCTGGCAGGAAGTGGACCTGAT
 CTGCTGTGAGTGCACGACTAGACCCGAGGCCACCTACACCGAGTGTGCTGTCTATGGTGAAG
 CCTGGGGTATGGACTGCGCTCTGTCTGCTGCCAGGACTCAGATGACTTTGAGGCCCTTGAATGTGCT
 GCGTCCACCTGCCTATGGCCCGCCGCGCCTGGTGGCTTGGAAATCCCTATGAATATGGCCAGATATA
 GGCCACCTTATCAGAGTCTCCCTATGGGCCAGATCTGTATCCACCGCCAGTGTACCCTACGACCCCT
 ACCCACCCACCTGGACCCTTGTCTGCGGGGAGGCCCTTATGGCGCCCCGCTTCCGACATGCCGGA
 CTTTGAGGATGATGGTGGCCCTATGGCGAGTCTGAGACTCTGACCCACCTAGCCGAGGCACTGGTTGG
 CCTTATCGGTCCAGAGACACCCGTGGCTCCTTCCAGAGCCTGAGGAATCCTCTGAGCGTGAAGCTATA
 CAGGAGCCTGTCTGAGCCCTATGAGGGCTAGAGGCCAAGAGTGTGGTATCCTGGATGGCTGCCCTCA
 CGGCCGCTGTGT

ACGCGTACGCGGCCGCTCGAG - GFP Tag - GTTTAA

Protein Sequence: >MG222718 representing NM_175641
 Red=Cloning site Green=Tags(s)

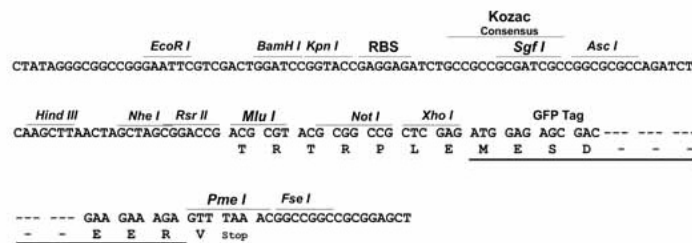
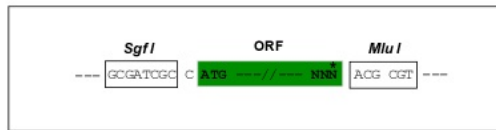
MRRPGLGGPCPLLLLLLLPAATSASGSSPSPSPSIEKAVVPSHQAGVAACHCCLDQTPKSSRCTRASCR
 VRNCPKACTGLEGLTPTSPVSPSRSPVEKSQVSLNWQPLTLQEARALLRQRRPRGPWARALLKRRPP
 HRAPAGQARVLCPLICHNGGVCVKPDRCLCPPDFAGKFCQLHSSGARPPAPAMPGLTRSVYTMPLANHRD
 DEHGVASMYSVHVEHPQEASVVVHQVERVSGPWEEANPEALARAEAAARAEAAAPYTVLAQSAPREDGYS
 DASGFYCFRELRGSECASPLPLRTQEVCCRGEGLAWGVHDCHPCAHLRNSNQVSGPNGPCPPGFERV
 NGSCVDVDECATGGRCQHGECANTRGGYTCVCPDGFLLDSSRSSCISQHVISEAKGPCYRVLHDGGCSLP
 ILRNITKQICCCSRVGKAWGRGQLCPPYGSEGFREICPAGPGYHYSASDLRYNTRPLNQDPPRVTFNQ
 RVPPATPRPTGFLPTRRPEPRDPGPQPEPRRPEPRRPESRPRPEPRRPEPRRPEPRRPEPRRPE
 PESQPWFEPPLPSIPAWTGPEIPESGSSSMCQRNPQVCGPGRCVPRPSGYTCACDPGFRLGPQGT
 IDECRRVPTPCAPGRCENTPGSFRVCVGTGFQAGPRATECLDVDECRRVPPPCDRGRCENTPGSFLC
 VCPAGYQAAPHGASCQDVDECTQSPGLCGRVCENLPGSFRVCVCPAGFRGSACEEDVDECAQQPP
 CGPGRCDNTAGSFHCACAPGFRSRGPGAPQDVDECSRSPSPCAYGRCENTEGSFKVCVPTGFQPN
 AAGSECEDVDECENRLACPGQECVNSPGSFQCRACPVGHHLRGRCTDVDECSSGTPCGLHGQCTN
 TKGSHCSCSTGYRASPQQPGCADINECLEGDFCFPHGECLNTDGSFTCTCAPGYRPGPRGASCLD
 VDECSEEDLCQSGICTNTDGSFECICPPGHRAGPDLASCLDIDECRERGPALCGSQRCE
 NSPGSYRCVRDCDPGYHPGEGTCCDDIDECREYGSACGAQRCENTPGSYRTPACDPGYQTP
 GGGCQDVDECNRNSFCGAHAMCQNLPGSFQVCVDQGYEGARDGRHCVDVNECETLQGVCG
 SALCENVEGSFLCVCNPSPEEFDPMTGRCVPRAPAGTFPGSQPQAPASPLPARPPAPPPRR
 PPRRQGPVSSGRRECYFDTAAPDACDNILARNVTWQECCTVGEWGSGRICRQCPGTETA
 EYQSLCPHGRGYLVPDGLSARRDVEDCQLFQDQVCKSGVCVNTAPGYSCYCSNGFYH
 AHRLECVDNDECADEEAPACEGGRCVNTVGSYHCTCEPPLVLDGSRRCVSNESQSLDDNL
 GVCWQEVGPDLVCSRPLDRQATYTECCCLYGEAWGMDCALCPAQDSDDFEALCNVLRPPAYG
 PPRPGGFGIPYEVGPDIGPPYQSLPYGPDLYPPPVLPHYPPPPGPFARREAPYGAPPFDM
 PFDDEDGGPYGESETDPPSRGTGWPYRSRDRGSPFEPEESSERGSYTGALSEPYEGLAE
 EECGILDGCPHGRC

TRTRPLE - GFP Tag - V

Restriction Sites: SgfI-MluI

Cloning Scheme:

Cloning sites used for ORF Shutting:

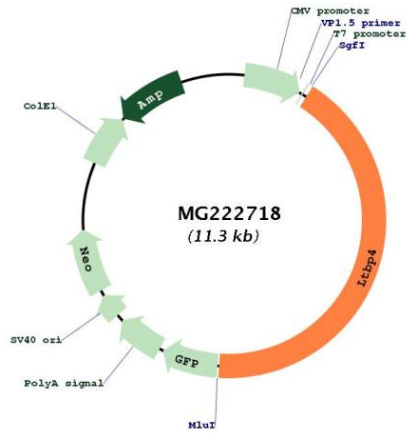


ACCN: NM_175641

ORF Size: 4998 bp

OTI Disclaimer:	<p>Due to the inherent nature of this plasmid, standard methods to replicate additional amounts of DNA in E. coli are highly likely to result in mutations and/or rearrangements. Therefore, OriGene does not guarantee the capability to replicate this plasmid DNA. Additional amounts of DNA can be purchased from OriGene with batch-specific, full-sequence verification at a reduced cost. Please contact our customer care team at custsupport@origene.com or by calling 301.340.3188 option 3 for pricing and delivery.</p> <p>The molecular sequence of this clone aligns with the gene accession number as a point of reference only. However, individual transcript sequences of the same gene can differ through naturally occurring variations (e.g. polymorphisms), each with its own valid existence. This clone is substantially in agreement with the reference, but a complete review of all prevailing variants is recommended prior to use. More info</p>
OTI Annotation:	This clone was engineered to express the complete ORF with an expression tag. Expression varies depending on the nature of the gene.
Components:	The ORF clone is ion-exchange column purified and shipped in a 2D barcoded Matrix tube containing 10ug of transfection-ready, dried plasmid DNA (reconstitute with 100 ul of water).
Reconstitution Method:	<ol style="list-style-type: none"> 1. Centrifuge at 5,000xg for 5min. 2. Carefully open the tube and add 100ul of sterile water to dissolve the DNA. 3. Close the tube and incubate for 10 minutes at room temperature. 4. Briefly vortex the tube and then do a quick spin (less than 5000xg) to concentrate the liquid at the bottom. 5. Store the suspended plasmid at -20°C. The DNA is stable for at least one year from date of shipping when stored at -20°C.
RefSeq:	NM_175641.2 , NP_783572.2
RefSeq Size:	5322 bp
RefSeq ORF:	5001 bp
Locus ID:	108075
UniProt ID:	Q8K4G1
Cytogenetics:	7 A3
Gene Summary:	<p>Key regulator of transforming growth factor beta (TGFB1, TGFB2 and TGFB3) that controls TGF-beta activation by maintaining it in a latent state during storage in extracellular space. Associates specifically via disulfide bonds with the Latency-associated peptide (LAP), which is the regulatory chain of TGF-beta, and regulates integrin-dependent activation of TGF-beta. [UniProtKB/Swiss-Prot Function]</p>

Product images:



Circular map for MG222718