

Product datasheet for **MG222714**

Ehmt2 (NM_145830) Mouse Tagged ORF Clone

Product data:

Product Type:	Expression Plasmids
Product Name:	Ehmt2 (NM_145830) Mouse Tagged ORF Clone
Tag:	TurboGFP
Symbol:	Ehmt2
Synonyms:	Bat8; D17Ert710e; G9a; KMT1C; NG36
Mammalian Cell Selection:	Neomycin
Vector:	pCMV6-AC-GFP (PS100010)
E. coli Selection:	Ampicillin (100 ug/mL)
ORF Nucleotide Sequence:	>MG222714 representing NM_145830 Red=Cloning site Blue=ORF Green=Tags(s)

TTTTGTAATACGACTCACTATAGGGCGGCCGGAATTCGTCGACTGGATCCGGTACCGAGGAGATCTGCC
GCC**CGATCGCC**

ATGCGGGGTCTGCCGAGAGGGAGGGGGCTGATGCGGGCCCGGGGGCGGGGGCTGCGGCCCCACGGGCG
GCCGCGGCCGCGGTGGGGGGGCGCCACCAGGGCGAGGTAGGCCCCGAAGCCTGCTCTCGTGCCACG
GGCCAGGCGTCTGGGCCCCCAGCTGCCTGCCGGGTGACCGGCCCCCGTTCTTGTCTCCCCTCC
CAGGGGGAGGCCCGCTGAGATGGGGGCGCTGCTGCTGGAGAAGGAGCCCGAGGAGCCCGGAGAGAG
TTCATAGCTCTTTGGGGACACCCTCAGAGTGAGGAGACCCTTCCCAAGCCAACCCGACTCCTTGGA
GCCTGCCGGCCCTCCTCTCCGGCTCTGTCACTGTACCCTCGGCGATGAGGGGGCTGACACCCTGTC
GGGGCCGCATCACTCATCGGGACGAACCCGAGAGCCTGGAGGGAGATGGGGTTCGCATCGTCTGGCC
ATGCCACAAAGTCGTTCCCTCTTCCCCAGCAAGGGGGTGCCTGTCCAGTCGGGCCAAAATGTCAAT
GACAGGGGCAGGAAAGTCGCCCCCTCGGTCCAGAGTTTGGCCATGAGGCTGTTGAGCATGCCCGGGGCC
CAGGGAGCTGCAACTGCTGGGCTGAACCCTCTCCGGCAACAATGCCGCCAGGAGGGGAGCCCAAG
TGCACCGAGCCCGAAAACCATGTCCAACCTAGCAACGACAGCCTCCAATCCCTGAGAAGCGGCCCC
TGAAGTCCAGCATTTCGCATGAGTGATGACATGCATCTGGGGAAGGTGACTTCAGATGTGGCCAAAAG
AGGAAGCTGAACCTGGTAGCCTGTCCGAGGACTTGGCTCTGCCGGGGGCTCAGGAGATAATCCTGG
AGAAGGGAGAGCCAGGCCCTTGAGGAGTGGGAGACGGTGGTGGCGATGACTTCAGCCTGTACTATGA
TGCGTACTCTGTGGATGAGCGGGTGACTCTGACAGCAAGTCTGAAGTGAAGCTCTAGCTGAACAGTTG
AGTGAGGAGGAGGAGGAGGAAGAGGAGGAAGAAGAAGAGGAGGAGGAGGAGGAAGAGGAGGAGGAGG
AAGAAGAGGACGAGGAGTCGGGCAATCAGTCAGACAGGAGCGGTTCTAGTGGCCGGCGCAAGGCCAAGAA
GAAATGGCGAAAGACAGCCCGTGGGTGAAGCCATCTAGAAAACGGCGAAACGAGAGCCTCCGAGGGCC
AAGGAGCAAGAGGAGTGAATGGTGTGGGTTCTCAGGGCCAGTGAGTACATGGAGGTTCTCTGGGGT
CCCTGGAGCTGCCAGCGAGGGACCCTCTCCCCAACCCAGCTGGGGTCTCCAATGACACGTCTCACT
GGAGACAGAACCGGGTTTGAGGAGCTGCCCTCTGCAGCTGCCGATGGAGGCTCCAAGATTGACCGC



[View online >](#)

ATCAGCGAGAGAGCAGGGCACAAGTGCATGGCCACAGAGAGTGTGGATGGAGAGCTCCTGGGCTGCAATG
 CTGCCATCCTTAAGCGGGAGACCATGCGGCCGTCTAGCCGCGTGGCGCTGATGGTGTCTGTGAGGCCCA
 TCGAGCCCGCATGGTCAAGCACCATTGCTGCCCGGGCTGCGGCTACTTCTGCACAGCGGGCACCTTCCTG
 GAATGCCACCCGACTTTTCGTGTAGCTCACCGCTTCCATAAGGCCTGCGTATCCCAGCTCAATGGGATGG
 TCTTCTGTCCCACTGTGGAGAGGATGCCTCAGAGGCCAGGAGGTGACCATTCTCGGGGCGATGGGGG
 AACACCCCAATTGGCACCGCAGCTCCTGCTCTGCCACCCTGGCACATGATGCCCCAGGGCGAGCGGAT
 ACCTCCCAGCTAGCGCCGAATGCGAGGGCATGGAGAGCCGCGGCCGCCCTGTGATCCCCTGGCTG
 ACACCATCGACAGCTCAGGGCCTTCACTGACTCTGCCTAATGGGGCTGCCTCTCCGCTGTGGGTCTGCC
 CCCAGGGCCGGCAGGGAAGCCCTGAAAAAGCCTTGGTCATCCAGGAGTCTGAGAGCGGAAGAAGCTG
 CGATTCCACCACGGCAGCTGTACTGTGCGGTGAAGCAGGGGGAGCTGCAGAAGGTGATCCTTATGCTGT
 TAGACAACCTGGACCCCAACTTCCAGAGCGACCAGCAGAGCAAGCGCACGCCCTGCACGCGGCCGCCCA
 GAAGGGTTCGGTAGAGATCTGTGATGTGCTGCTGCAGGCAGGAGCAACATCAATGCCGTAGATAAGCAA
 CAACGCACGCCACTAATGGAGGCCGTGGTAACAACCACCTGGAGGTGGCAGCTACATGGTGCAGTTAG
 GTGGCTGTGTCTACAGCAAGGAAGAGGATGGCTCCACCTGTCTACATCATGCAGCCAAAATTGGAACTT
 GGAATGGTCAGCTGCTACTGAGCACAGGACAGGTGGACGTCATGCCAGGACAGTGGGGCTGGACG
 CCCATCATCTGGGAGCCGAGCACAAGCACATCGATGTGATTTCGTATGCTGCTGACCCGGGTGCCGATG
 TCAACCCTGACTGACAATGAGAAAAACATCTGCCTGCACTGGGCCTCCTTACGGGTAGTGCCGCCATCGC
 TGAGGTCTTCTGAATGCCCAGTGTGATCTCCATGCTGTCAACTACCATGGGGACACGCCCTGCACATA
 GCCGCCAGGGAGAGCTACCATGACTGTGTTCTGTTGTTCTGTCTCGTGGAGCCAACCCTGAGCTTCGGA
 ACAAGAAGGAGACACGGCATGGGATCTGACCCAGAGCGCTCTGATGTGTGGTTTGCAGCTGCACTCAA
 TCGAAAGCTTAGGCTTGGGTAGGGAACCGGCTGTCCGCACCGAGAAGATCATCTGCCGGGACGTAGCC
 CGAGGCTATGAGAATGTACCCATCCCCTGTGTCATGGTGTGGATGGGGAGCCGTGCCCGGAGGACTACA
 AGTACATCTCTGAGAAGTGGGAGACATCGACCATGAACATCGACCGCAACATACCCATCTGCAGCACTG
 CACGTGTGGATGACTGCTCCAGCTCCAATTGCCTATGTGGTCAGCTCAGTATCCGATGCTGGTATGAC
 AAGGACGGGCGGCTGCTCCAGGAGTTTAAACAAGATCGAGCCCCCCTGATCTTTGAGTGTAAACCAGGCAT
 GCTCCTGCTGGAGAAGCTGCAAGAACCAGTGGTGCAGAGCGGCATCAAGGTACGGCTGCAGCTCTACCG
 GACTGCCAAGATGGGCTGGGGGTCGAGCCTTGCAGACCATCCCCAGGGCAGGTTTCTGCGAGTAT
 GTAGGAGAGCTGATCTCTGATGCCGAGGCTGATGTGAGAGAGGATGATTCTTACCTTTCGATTTAGATA
 ACAAGGATGGCGAGGTTTACTGCATTGATGCCCGTTACTATGGCAACATCAGCCGATTCTTAACCACCT
 GTGTGACCCCAACATCATCCCTGTCCGGGTTTTTCATGCTGCACCAAGATCTACGGTTCACCGATTGCC
 TTCTTCAGCTCCAGGGACATCCGACTGGGGAGGAGCTGGGCTTTGACTACGGTGACCGATTCTGGGACA
 TCAAGAGCAAGTATTTACCTGCCAGTGTGGCTCTGAGAAGTGAAGCATTACAGCGGAGGCCATCGCCCT
 GGAGCAGAGCCGCTGGCCCGGCTGGACCCCCACCGGAGCTGCTCCCTGACCTCAGCTCCCTGCCCC
 ATCAACACC

ACGCGTACGCGGCCGCTCGAG – GFP Tag – GTTTAA

Protein Sequence: >MG222714 representing NM_145830
Red=Cloning site Green=Tags(s)

MRGLPRGRGLMRARGRGRAAPTGGRGRGRGGAHRGRGRPRSLLSLPRAQASWAPQLPAGLTGPPVPCPLPS
QGEAPAEMGALLLEKEPRGAAERVHSSLGDTPOQSEETLPKANPDSLEPAGPSSPASVTVTVGDEGADTPV
GAASLIGDEPESLEGGGRIVLGHATKSFSSPSKGGACPSRAKMSMTGAGKSPSSVQSLAMRLLSMPGA
QGAATAGPEPSPATTAQEQGPKVHRARKTMSKPSNGQPPIPEKRPPPEVQHFRMSDDMHKGVTSVAKR
RKLNSGSLSEDLGSAGSGDIILEKGEPRPLEEWETVVGDDFSLYYDAYSVDERVSDSKSEVEALAEQL
SEEEEEEEEEEEEEEEEEEEEEEEEEDEESGNQSDRSGSSGRRKAKKKWRKDSPWVKPSRKRKRPPRA
KEPRGVNGVGSSEYMEVPLGSELEPSEGLSPNHAGVSDNTSSLETERGFEEPLPCSCRMEAPKIDR
ISERAGHKCMATESVDGELLGCNAAILKRETRMPSSRVALMVLCEAHRARMVKHHCCPGCYFCTAGTFL
ECHPDFRVAHRFHAKCVSQLNGMVFCPHCGEDASEAQEVTIPRGDGGTPPIGTAAPALPLAHDAPGRAD
TSQPSARMRGHGEPDRPPCDPLADTIDSSGSLTLPNGGCLSAVGLPPGPGREALEKALVIQESERRKLL
RFHPRQLYLSVKQGELQKVLMLLDNLDPNFQSDQQSKRTPHAAAQKGSVEICHVLLQAGANINAVDKQ
QRTPLMEAVVNNHLEVARVMVQLGGCVYSKEEDGSTCLHHAAKIGNLEMVLLLLSTGQVDVNAQDSGGWT
PIIWAAEHKHIDVIRMLLTRGADVTLTDNEENICLHWASFTGSAATAEVLLNAQCDLHAVNYHGDTPPLHI
AARESYPHDCVLLFLSRGANPELRNKEGDTAWDLTPERSDVWFALQLNRKRLRGLVGNRAVRTEKIIICRDVA
RGYENVIPCVNGVDGEPCEPDYKYISENCETSTMNIDRNIHLQHCTCVDDCSSNCLCGQLSIRCWYD
KDGRLLEFNKIEPPLIFECNQACSCWRCKNRVVQSGIKVRLQLYRTAKMGWGRALQTIPOGTFICEY
VGELISDAEADVREDDSYLFDLDNKDGVEYCIDARYYGNISRFINHLCDPNIIPVRVFMHLQDLRFPRIA
FFSSRDIRTGEELGFDYGRFDWDIKSKYFTCCGSEKCKHSAEAI AEQSRARLDHPHELLPDLSSLPP
INT

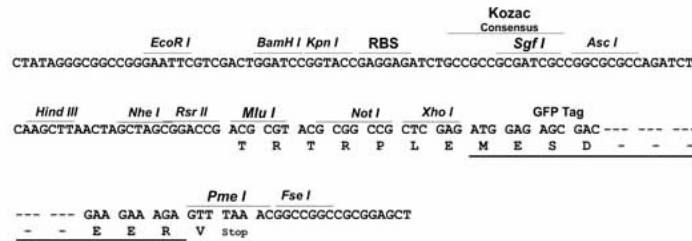
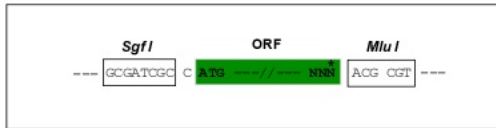
TRTRPLE - GFP Tag - V

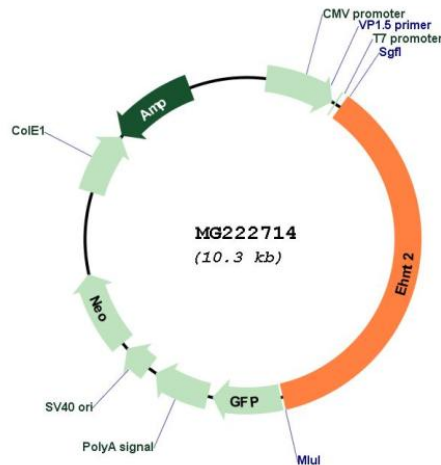
Restriction Sites:

Sgfl-MluI

Cloning Scheme:

Cloning sites used for ORF Shuttling:



Plasmid Map:


ACCN: NM_145830

ORF Size: 3789 bp

OTI Disclaimer: Due to the inherent nature of this plasmid, standard methods to replicate additional amounts of DNA in *E. coli* are highly likely to result in mutations and/or rearrangements. Therefore, OriGene does not guarantee the capability to replicate this plasmid DNA. Additional amounts of DNA can be purchased from OriGene with batch-specific, full-sequence verification at a reduced cost. Please contact our customer care team at custsupport@origene.com or by calling 301.340.3188 option 3 for pricing and delivery.

The molecular sequence of this clone aligns with the gene accession number as a point of reference only. However, individual transcript sequences of the same gene can differ through naturally occurring variations (e.g. polymorphisms), each with its own valid existence. This clone is substantially in agreement with the reference, but a complete review of all prevailing variants is recommended prior to use. [More info](#)

OTI Annotation: This clone was engineered to express the complete ORF with an expression tag. Expression varies depending on the nature of the gene.

Components: The ORF clone is ion-exchange column purified and shipped in a 2D barcoded Matrix tube containing 10ug of transfection-ready, dried plasmid DNA (reconstitute with 100 ul of water).

Reconstitution Method:

1. Centrifuge at 5,000xg for 5min.
2. Carefully open the tube and add 100ul of sterile water to dissolve the DNA.
3. Close the tube and incubate for 10 minutes at room temperature.
4. Briefly vortex the tube and then do a quick spin (less than 5000xg) to concentrate the liquid at the bottom.
5. Store the suspended plasmid at -20°C. The DNA is stable for at least one year from date of shipping when stored at -20°C.

RefSeq: [NM_145830.3](#)

RefSeq Size: 4026 bp

RefSeq ORF: 3792 bp

Locus ID: 110147

UniProt ID: [Q9Z148](#)

Cytogenetics: 17 18.45 cM

Gene Summary: Histone methyltransferase that specifically mono- and dimethylates 'Lys-9' of histone H3 (H3K9me1 and H3K9me2, respectively) in euchromatin. H3K9me represents a specific tag for epigenetic transcriptional repression by recruiting HP1 proteins to methylated histones. Also mediates monomethylation of 'Lys-56' of histone H3 (H3K56me1) in G1 phase, leading to promote interaction between histone H3 and PCNA and regulating DNA replication. Also weakly methylates 'Lys-27' of histone H3 (H3K27me). Also required for DNA methylation, the histone methyltransferase activity is not required for DNA methylation, suggesting that these 2 activities function independently. Probably targeted to histone H3 by different DNA-binding proteins like E2F6, MGA, MAX and/or DP1. May also methylate histone H1. In addition to the histone methyltransferase activity, also methylates non-histone proteins: mediates dimethylation of 'Lys-373' of p53/TP53. Also methylates CDYL, WIZ, ACIN1, DNMT1, HDAC1, ERCC6, KLF12 and itself.[UniProtKB/Swiss-Prot Function]