

## Product datasheet for **MG222697**

### Dpp4 (NM\_010074) Mouse Tagged ORF Clone

#### Product data:

Product Type:	Expression Plasmids
Product Name:	Dpp4 (NM_010074) Mouse Tagged ORF Clone
Tag:	TurboGFP
Symbol:	Dpp4
Synonyms:	Cd26; Dpp-4; THAM
Mammalian Cell Selection:	Neomycin
Vector:	pCMV6-AC-GFP (PS100010)
E. coli Selection:	Ampicillin (100 ug/mL)



[View online »](#)

ORF Nucleotide  
Sequence:

>MG222697 representing NM\_010074  
Red=Cloning site Blue=ORF Green=Tags(s)

TTTTGTAATACGACTCACTATAGGGCGGCCGGAATTCGTCGACTGGATCCGGTACCGAGGAGATCTGCC  
GCCGCGATCGCC

ATGAAGACACCGTGAAGGTTCTTCTGGGACTGCTTGGTGTGCGCTGCGCTTGTACCATCATCACCGTGC  
CAATAGTTCTGCTGAGCAAAGATGAAGCGGCAGCTGACAGCCGAGAACGTATCACTAGCTGACTATTT  
AAAGAGTACCTTTTCGGGTCAAGTCTACTCTTTGTGGTGGGTTTCAGACTTTGAATACCTCTACAAACAA  
GAGAACAATATCTTGCTGCTCAATGCTGAACATGGAAACAGCTCCATTTTCTGGAGAACAGTACCTTTG  
AAAGCTTTGGATATCATTAGTGTACCTGACCGACTGTTTGTCTCTTGGAAATACAACACTACGTGAAGCA  
ATGGAGACATTCTACACAGCTTCATACAACATTTATGATGTGAATAAAAGACAGCTGATCACAGAAGAG  
AAGATCCAAATAATACACAGTGGATCACATGGTCACCAGAAGGTATAAGTTGGCATATGTCTGGAAGA  
ATGATATTTACGTTAAAGTTGAACCACACTTACCTAGTCATAGGATCACATCGACAGGAGAAGAAAATGT  
AATATATAATGGAATAACTGACTGGGTTTATGAAGAGGAAGTCTTCGGTGCCTACTCTGCACTGTGGTGG  
TCTCCAAACAACAGCTTTCTAGCTTATGCCAGTTTAAACGACACAGGAGTGCCGCTCATTGAATACTCCT  
TCTATTCTGATGAGTCACTGCAGTACCCAAAGACAGTGTGGATCCATACCCAAAGGCAGGAGCTGTGAA  
TCCAACGTAAAGTTCTTTATTGTAATAATAGACTCTCTCAGCTCATCTCTAGTGCGGCTCCCATCCAA  
ATCCCTGCTCCTGCATCTGTGGCAAGAGGGGATCACTATTTATGTGATGTGGTGTGGGCTACAGAAGAAA  
GAATTTCACTACAGTGGCTCAGGAGGATTCAGAACTATCCGTGATGGCTATCTGTGACTATGATAAGAT  
CAACCTAACGTGGAACGTCCATCCGAGCAGCAGCAGCTTGAATGAGTACCACGGGCTGGGTCGGAAGA  
TTTAGGCCCGCAGAACCTCACTTCACTCTGATGGAAGCAGCTTCTATAAGATCATCAGCGACAAAGATG  
GCTATAAACACATCTGCCACTTCCCGAAAGATAAGAAAGACTGTACATTTATTACAAAAGGAGCCTGGGA  
AGTCATTAGTATCGAAGCTCTGACCAGCGATTATCTATACTACATTAGTAACCAATATAAAGAAATGCCA  
GGAGGAAGAAATCTCTATAAAAATCAACTTACTGACCACACAAATGTGAAGTGCCTTAGTTGTGACCTGA  
ATCCAGAAAGATGTCAGTATTATGCAGTATCATTTAGTAAAGAGGCAAAGTACTATCAGCTGGGATGTTG  
GGGCCCGGCTGCCCCTCTACACTCTACATCGTAGCACGGATCATAAAGAGCTGCGAGTCTGGAAGAC  
AATTCTGCTTTGGATAGAATGCTGCAGGATGTCCAGATGCCTTCAAAAAAATGGACTTCATTGTTTTGA  
ATGAAACAAGATTTTGGTATCAAATGATCTTGCCCCTCATTTTGATAAATCCAAGAAATATCCTCTACT  
ATTAGATGTATATGCAGGTCCTGTAGTCAAAAAGCAGATGCTTCCCTCAGACTGAACTGGGCCACTTAC  
CTTGCAAGTACAGAAAACATCATAGTAGCTAGCTTTGACGCGCAGAGGAAGTGGTTACCAAGGAGATAAGA  
TCATGCATGCAATCAACAGAAGATTGGGAACACTGGAAGTTGAAGATCAAATTGAAGCAGCGAGGCAATT  
TGTA AAAATGGGATTTGTGGACAGCAAGCGAGTTGCAATTTGGGGCTGGTCATATGGAGGGTATGTAACC  
TCAATGGTCTGGGATCGGGAAGTGGCGTGTTC AAGTGC GGAATAGCTGTGGCACCTGTGTACGGTGGG  
AGTACTATGACTCAGTGTACACAGAGCGTTACATGGGTCTCCCAATTCAGAAAGACAACCTTGACCATTA  
CAGGAACCAACAGTCATGAGCAGAGCTGAACATTTTAAACAAGTTGAGTACCTCCTTATTCATGGAACG  
GCAGATGATAATGTTCACTTT CAGCAGTCAGCTCAGATCTCCAAGCCCTGGTGGATGCTGGCGTGGATT  
TCCAAGCAATGTGGTACACGGATGAAGACCACGGGATCGCTAGCAGCACAGCTCACCAGCACATCTATTC  
CCACATGAGCCATTTCTCCAGCAGTGTCTCTCTTACAC

ACGCGTACGCGGCCGCTCGAG – GFP Tag – GTTTAA

Protein Sequence: >MG222697 representing NM\_010074  
 Red=Cloning site Green=Tags(s)

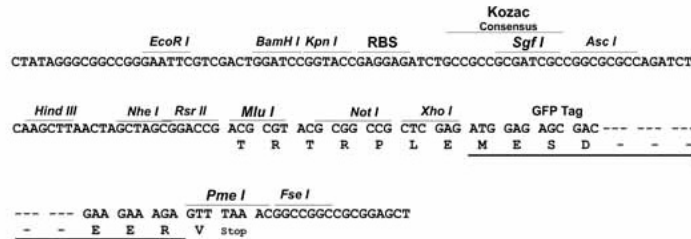
MKTPWKVLLGLLGVAALVTIITVPIVLLSKDEAAADSRRTYSLADYLKSTFRVKSYSLWVSDFEYLYKQ  
 ENNILLNAEHGNSSIFLENSTFESFGYHSVSPDRLFVLLLEYNYVKQRHSYTASYNIYDVNKRQLITEE  
 KIPNNTQWITWSPEGHKLAYVWKNDIYVKVEPHLP SHRITSTGEENVIYNGITDWWYEEEFVFGAYSALWW  
 SPNNTFLAYAQFNDTGVPLIEYSFYSDLSLQYPKTVWIPYKAGAVNPTVKFFIVNIDSLSSSSSAPIQ  
 IPAPASVARGDHYLCDVVWATEERISLQWLRIQNYSVMAICDYDKINLTWNCPSEQQHVEMSTTGWVGR  
 FRPAEPHFTSDGSSFYKIIISDKDGYKHICHFPKDKDCTFITKGAWEVISIEAL TSDYLYYISNQYKEMP  
 GGRNLYKIQLTDHTNVKCLSCDLNPERCQYYAVSF SKEAKYYQLGCWGPGLPLYTLHRSTDHKLRLVLED  
 NSALDRMLQDVQMP SKKLDIVLNETRFWYQMILPPHFDKSKKYPLLLDVYAGPCSQKADASFRLNWATY  
 LASTENIIVASFDRGSGYQGDKIMHAINRRLGTLEVEDQIEAARQFVKMGFVDSKRVAIWGWSYGGYVT  
 SMVLGSGSGVFKCGI AVAPVSRWEYDVS YTERYMG LIPEDNLDHYRNSTVMSRAEHFKQVEYLLIHGT  
 ADDNVHFQQAQISKALVDAGVDFQAMWYTD EDHGIASSTA HQHIYSHMSHFLQQCFSLH

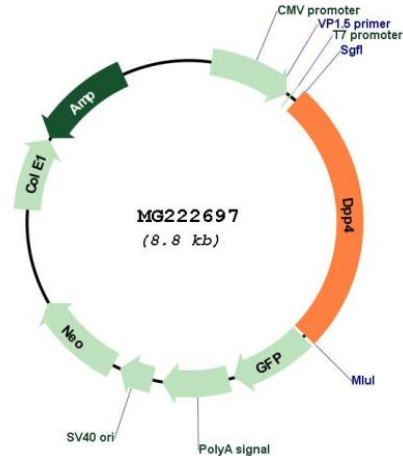
TRTRPLE - GFP Tag - V

Restriction Sites: SgfI-MluI

Cloning Scheme:

Cloning sites used for ORF Shutting:



**Plasmid Map:**


**ACCN:** NM\_010074

**ORF Size:** 2280 bp

**OTI Disclaimer:** The molecular sequence of this clone aligns with the gene accession number as a point of reference only. However, individual transcript sequences of the same gene can differ through naturally occurring variations (e.g. polymorphisms), each with its own valid existence. This clone is substantially in agreement with the reference, but a complete review of all prevailing variants is recommended prior to use. [More info](#)

**OTI Annotation:** This clone was engineered to express the complete ORF with an expression tag. Expression varies depending on the nature of the gene.

**Components:** The ORF clone is ion-exchange column purified and shipped in a 2D barcoded Matrix tube containing 10ug of transfection-ready, dried plasmid DNA (reconstitute with 100 ul of water).

**Reconstitution Method:**

1. Centrifuge at 5,000xg for 5min.
2. Carefully open the tube and add 100ul of sterile water to dissolve the DNA.
3. Close the tube and incubate for 10 minutes at room temperature.
4. Briefly vortex the tube and then do a quick spin (less than 5000xg) to concentrate the liquid at the bottom.
5. Store the suspended plasmid at -20°C. The DNA is stable for at least one year from date of shipping when stored at -20°C.

**RefSeq:** [NM\\_010074.2](#)

**RefSeq Size:** 5268 bp

**RefSeq ORF:** 2283 bp

**Locus ID:** 13482

UniProt ID: [P28843](#)

Cytogenetics: 2 35.85 cM

**Gene Summary:** Cell surface glycoprotein receptor involved in the costimulatory signal essential for T-cell receptor (TCR)-mediated T-cell activation. Acts as a positive regulator of T-cell coactivation, by binding at least ADA, CAV1, IGF2R, and PTPRC. Its binding to CAV1 and CARD11 induces T-cell proliferation and NF-kappa-B activation in a T-cell receptor/CD3-dependent manner. Its interaction with ADA also regulates lymphocyte-epithelial cell adhesion. In association with FAP is involved in the pericellular proteolysis of the extracellular matrix (ECM), the migration and invasion of endothelial cells into the ECM. May be involved in the promotion of lymphatic endothelial cells adhesion, migration and tube formation. When overexpressed, enhanced cell proliferation, a process inhibited by GPC3. Acts also as a serine exopeptidase with a dipeptidyl peptidase activity that regulates various physiological processes by cleaving peptides in the circulation, including many chemokines, mitogenic growth factors, neuropeptides and peptide hormones. Removes N-terminal dipeptides sequentially from polypeptides having unsubstituted N-termini provided that the penultimate residue is proline. [UniProtKB/Swiss-Prot Function]