

## Product datasheet for **MG222681**

### **Adra1a (NM\_013461) Mouse Tagged ORF Clone**

#### **Product data:**

Product Type:	Expression Plasmids
Product Name:	Adra1a (NM_013461) Mouse Tagged ORF Clone
Tag:	TurboGFP
Symbol:	Adra1a
Synonyms:	Adr; Adra1c
Mammalian Cell Selection:	Neomycin
Vector:	pCMV6-AC-GFP (PS100010)
E. coli Selection:	Ampicillin (100 ug/mL)



[View online »](#)

**ORF Nucleotide Sequence:**

>MG222681 representing NM\_013461  
 Red=Cloning site Blue=ORF Green=Tags(s)

TTTTGTAATACGACTCACTATAGGGCGGCCGGAATTCGTCGACTGGATCCGGTACCGAGGAGATCTGCC  
 GCC**CGCATCGCC**

ATGGTGCTCTTTCTGAAAATGCTTCTGAAGGCTCCAACCTGCACCCACCCGCCAGCACAGGTGAACATTT  
 CTAAGGCCATTCTACTTGGGGTATCTTGGGGGCCTCATCATTTTCGGGGTCTTGGGGAATATTTTAGT  
 GATCCTCTCGGTGGCCTGTCATCGGCATCTGCACTCGGTGACTACTACTACATTGTCAACCTGGCTGTG  
 GCAGACCTCCTCCTCACCTCCACCGTGTGCCCTTCTCTGCCATCTTTGAGATCCTGGGCTACTGGGCTT  
 TTGGCAGGGTGTCTGCAACATCTGGGCGCGGTGGACGTCTTATGCTGCACAGCGTCCATCATGGGCTT  
 CTGCATCATCTCCATCGACCGATACATTGGTGTGAGCTACCCGCTGCGCTACCCACCATTGTCAACCAG  
 AGGAGGGCGTCAAGGCTCTGCTCTGCTCTGGGCGCTTCTTGGTTCATCTCCATCGGACCCCTGTTCC  
 GCTGGAGGCAGCAGGCTCCGGAGGATGAGACCATCTGCCAAATCAATGAGGAGCCAGGATACGTGCTGT  
 CTCAGCGCTGGGCTCTTCTACGTGCCACTGACCATCATCTGGTTATGTACTGTGAGTCTACGTGGTA  
 GCCAAGAGAGAAAAGCCGAGGCTCAAGTCCGGCTCAAGACCGACAAGTCAGACTCAGAGCAAGTGACGC  
 TCCGTATCCACCGTAAAAATGTCCTGCAGAAGGCAGCGGAGTAAGCAGTGCCAAGAATAAGACTCACTT  
 CTCCTGAGGCTGCTCAAGTTTTCCCGAGAGAAGAAAGCCGCAAGACGCTGGGCATTGTGGTGGGATGC  
 TTCGTCCTCTGCTGGCTGCCGTTCTTCTCGTGATGCCATTGGGTCTTCTTCCCGAATTTCAAGCCAC  
 CGGAAACAGTTTTCAAATAGTATTTGGCTTGGGTACCTAAATAGTTGCATCAACCCTATCATATACCC  
 ATGCTCCAGCCAGGAGTTCAAGAAAGCCTTTGAGAATGTGCTGCGAATCCAGTGTCTTCGAGAAGGCAG  
 TCTTCCAAGCATGCCCTGGGCTACACTTGCACCCACCCAGCCAGGCTGTAGAGGGGCAGCACAGAGGCA  
 TGGTGCATATCCCGTGGGCTCAGGAGAGACTTTCTATAAGATCTCCAAGACAGATGGAGTCCGTGAATG  
 GAAGTTTTTCTCTTCCATGCCCCAGGGATCGGCCAGGATTACCATGCCGAAGGACCAATCCGCCTGTACC  
 ACAGCCCGGGTGAGAAGTAAAAGCTTTTTGCAGGTCTGCTGCTGTGTGGGGTCTCGACCCACGCCCTG  
 AAGAAAATCACCAAGTTCACCATTAAGATCCACACCATCTCCCTCGGTGAAAACGGGGAGGAAGTC

**ACGCGTACGCGGCCGCTCGAG** - GFP Tag - GTTTAA

**Protein Sequence:**

>MG222681 representing NM\_013461  
 Red=Cloning site Green=Tags(s)

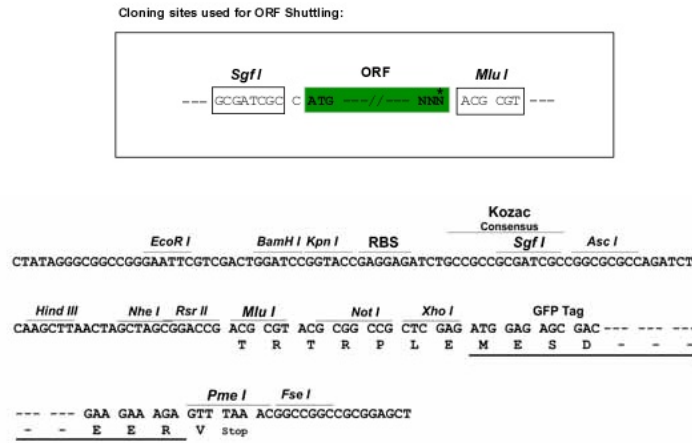
MVLLSENASEGSNCTHPPAQVNISKAILLGVILGGLIIFGVLGNILVILSVACHRHLHSVTHYYIVNLAV  
 ADLLLSTVLPFSAIFEILGYWAFGRVFCNIWAAVDVLCCTASIMGLCIISIDRYIGVSYPLRYPTIVTQ  
 RRGVRRALLCVWALSLSVISIGPLFGWRQQAPEDETICQINEEPGYVLFALGSAFYVPLTIILVMYCRVYV  
 AKRESRGLKSGLKTDKSDSEQVTLRIHRKNVPAEGSGVSSAKNKTHFSVRLKFSREKKAATLGIIVGC  
 FVLCWLPFFLVMPIGSFFPNFKPPETVFKIVFWLGYLNSCINPIIYPCSSQEFKAFQNLRIQCLRRRQ  
 SSKHALGYTLHPPSQAVEGQHRGMVRIPVGSGETFYKISKTDGVRWKFSSMPQGSARITMPKQDSACT  
 TARVRSKSFLLQVCCCVGSSTPRPEENHQVPTIKIHTISLGENGEEV

**TRTRPLE** - GFP Tag - V

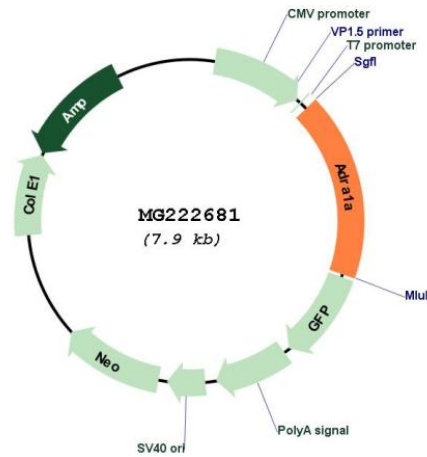
**Restriction Sites:**

SgfI-MluI

Cloning Scheme:



Plasmid Map:



ACCN: NM\_013461

ORF Size: 1398 bp

<b>OTI Disclaimer:</b>	<p>Due to the inherent nature of this plasmid, standard methods to replicate additional amounts of DNA in E. coli are highly likely to result in mutations and/or rearrangements. Therefore, OriGene does not guarantee the capability to replicate this plasmid DNA. Additional amounts of DNA can be purchased from OriGene with batch-specific, full-sequence verification at a reduced cost. Please contact our customer care team at <a href="mailto:custsupport@origene.com">custsupport@origene.com</a> or by calling 301.340.3188 option 3 for pricing and delivery.</p> <p>The molecular sequence of this clone aligns with the gene accession number as a point of reference only. However, individual transcript sequences of the same gene can differ through naturally occurring variations (e.g. polymorphisms), each with its own valid existence. This clone is substantially in agreement with the reference, but a complete review of all prevailing variants is recommended prior to use. <a href="#">More info</a></p>
<b>OTI Annotation:</b>	This clone was engineered to express the complete ORF with an expression tag. Expression varies depending on the nature of the gene.
<b>Components:</b>	The ORF clone is ion-exchange column purified and shipped in a 2D barcoded Matrix tube containing 10ug of transfection-ready, dried plasmid DNA (reconstitute with 100 ul of water).
<b>Reconstitution Method:</b>	<ol style="list-style-type: none"> <li>1. Centrifuge at 5,000xg for 5min.</li> <li>2. Carefully open the tube and add 100ul of sterile water to dissolve the DNA.</li> <li>3. Close the tube and incubate for 10 minutes at room temperature.</li> <li>4. Briefly vortex the tube and then do a quick spin (less than 5000xg) to concentrate the liquid at the bottom.</li> <li>5. Store the suspended plasmid at -20°C. The DNA is stable for at least one year from date of shipping when stored at -20°C.</li> </ol>
<b>RefSeq:</b>	<a href="#">NM_013461.3</a> , <a href="#">NP_038489.2</a>
<b>RefSeq Size:</b>	4137 bp
<b>RefSeq ORF:</b>	1401 bp
<b>Locus ID:</b>	11549
<b>UniProt ID:</b>	<a href="#">P97718</a>
<b>Cytogenetics:</b>	14 D1
<b>Gene Summary:</b>	<p>This gene encodes one of several multipass transmembrane proteins that function as G protein-coupled receptors. The encoded protein binds to epinephrine and norepinephrine to mediate signaling in cells of the cardiac, nervous, and other organ systems. Alternatively spliced transcript variants encoding multiple isoforms have been observed for this gene. [provided by RefSeq, Nov 2012]</p>