

Product datasheet for **MG222673**

Plxnb1 (NM_172775) Mouse Tagged ORF Clone

Product data:

Product Type: Expression Plasmids
Product Name: Plxnb1 (NM_172775) Mouse Tagged ORF Clone
Tag: TurboGFP
Symbol: Plxnb1
Synonyms: 2900002G15Rik; AU042020; mKIAA0407
Mammalian Cell Selection: Neomycin
Vector: pCMV6-AC-GFP (PS100010)
E. coli Selection: Ampicillin (100 ug/mL)
ORF Nucleotide Sequence: >MG222673 representing NM_172775
Red=Cloning site Blue=ORF Green=Tags(s)

TTTTGTAATACGACTCACTATAGGGCGGCCGGAATTCGTCGACTGGATCCGGTACCGAGGAGATCTGCC
 GCCCGGATCGCC

ATGTCTGTCTCGGCCAGTTCTTCTCCAGGTGTTCTGGGCCGGGTGTGTCGTCACCCTGCGGTCCCCTC
 TGCCAGCTGCTTCACTGCCAATGGCACACATCTACAACACTTGGCAAGGGACCCACCACAGGTACCT
 CTATGTAGGGGCCACCACTTCTGTTCCAGTTGAGCCCTGGGCTGCAGCTGGAAGCCGTTGTCCAGC
 GGCCCTGTGAATGACAGCCGGGATTGCCCTGCCACCTGTGATACCTGATGAATGTCCCAAGCCAGCCTA
 CTAAACAACCTAACCAGCTGCTCCTGGTGAGCCAGAGGCTCTGGTGGTGTGTGGGAGCATAACCAGGG
 CATCTGTGAGCTACGGAGCCTGGGACAGATCAGGCAGCTGCTGCTACGGCCAGAGCGACCTGGGGACACC
 CAGTATGTGGCTGCAAATGACCCCTGCAGTACAGTGGGGCTGGTGGCCAGGGATTGGTAGGGGAGC
 CCCTCCTGTTTGTGGGGCGGGGATACACCAGCAGGGGTGTAGGTGGTGGGATTCCCTCCCATTACAACCCG
 AGCCCTGCGACCACCGGACCCCAAGCTGCCTTCTTTATGAAGAAACAGCCAAGTTAGCAGTGGGCCGC
 CTGTCCGAGTACAGCCACCACTTCGTGAGTGCCTTTGTACGCGGGGCCAGTGCATACTTCTGTTCTTGC
 GGCAGACCTGAAGGCCCTTAGAGCTTCCGTGCCTATGTGTCTCGAGTGTGCCTTCAGGACCAGCA
 CTACTACTTTATGTGGAATTGCCCTGGCCTGCCAGGGTGGTGTGTTACGGTCTTATCCAGGCTGCAGCT
 GTAGCCAGTCCAAGGAGGTGGCCGTGGGACGTACTTTGCAGCTTTCTCAGTGGCTCCTCCCA
 CTGTGGATTGGCCCTGTGAGCATCTACTGGGGCATCTGGAACCTCTGTGCTCTGTGCCTCCCCCTGGA
 TGAGGTAGACCAGCTTGCTAATTACACTCGAGATGCCTGTTATACTCGGGAAGGCCGTGCTGAGAACGGG
 ACCAAGGTTGCTGACATTGCATACGATGTCCTTCCGACTGTGCGCAGCTACCAGTGGACACCCCGGATG
 CTTTTCCATGTGGCTCTGACCACACACCCAGTCCCATGGTCCAGCTGTGTCCCTTTGGAAGCCACGCCAAT
 TCTGGAGTACCAGGGTTCAGCTAACAGCTGTGGCTGCACCATGGAAGATGGACACACTATTGCTTTC
 CTGGGTGACAGTCAAGGACAGTTGCATAGGGTCTACTTAGGCCCTGGAAGAAGTGTGCCCATATTCTA
 AACAGAGCATCCAGCCGGGTCTCCTGTGAACAGAGATCTTACCTTTGATGGTACCTTTGAGCATCTCTA
 TGTAGCAACTCAGACTACTCTTGTGAAGTTTCTGTGGCTCCTTGTGCTCAGCATCTGGACTGTGACTCT



[View online »](#)

TGCCCTTGCTCACAGGGACCCCTATTGCGGATGGTGTGTGCTCCTGGGCAGGTGTAGTCGCCGGTCCGGAGT
GCTCAAGGGACCAGGGCCAGAGCAGTGGCTGTGGAGCTTCCAGCCGGAAGTGGGCTGTCTTCGAGTGGT
GGCCGTGAGCCCTGCCAATATCAGTCGGGAAGAGAGGAGGGAGGTTTTCTTGTGAGTCCAGGCCTGCCA
TCTCTCTGGCCAGGGGAGTCATATTTCTGCTACTTTGGAGACCAACAGAGTCTGCTCTACTGACCAGTT
CTGGTGTGATGTGTCCCTCCCCAGACCCAGTGAAGGCTCCAGTGTGCAGAGAGGAGCCGACCATATCTC
TGTGAACGTGGAGCTCAGGTTTGGTGCCGTGGTGTGATCGCCAGCACCTCCCTCTCCTTCTATGACTGCGTG
GCAGTTACTGCGTCTTCCCCTCTGCACCGTGCCGGGCTGTGTGAGCAGCCGCTGGGGCTGTAAGTGGT
GTGTGTGGCAGCAGTGTGCACACACAAGGCCTCGTGTGACGCTGGGCCTATGGTGGCAAGCCAACAGAG
CCCACTCCTTCCCCTAATCCCTCCTGCAAGGGATGAACTCACCCCTTTCCACCCACAGTCCCCAAACC
ACGGTCACTCCTACCCCAACAGCTTCCAATAGAGCCTAGGGCTCCCTCCACAGCCTCAGATGTCTAC
CTGGGGCCAAGCCTTCCCGGCTCAGCCTCTGGGGCCATGGGCAGGTCTGGCCCACTATTTCCCCTAC
TTCCACAGAGTCACTCTTCATGAGAAGCCCTTCTCCTGACCCCTACCATACTGGAACCACTGTC
CCTGCCCCACTGGCTTGGGACCATCGACCACCTGAGGACCTTTGGCCTCTACCCATTCCCCTCAG
ATGCAGCTGCAGTGTCCCTGCAGAGCCTGGCCCTGAGGCTCTGCCTCCATGGTGGCTCTGGACCAGCC
CCCTGGCACTGTTCCAGACACTACTTTCCAGGGGCCCTGGCTCCATGAAGCCGTTCTGGATTGGCTC
ACCAAAGGAGGGCGGAGCTGCCGAGGGCGGATGAGTGGATGGGGGTGACACGCCCGCCTTCTCCACTT
CCACACTCCTCTCAGGTGATGGAGACTAGCAGAGCAGAGGGCCCTCCTGCCCCCTCATCCTCCTGTG
CAGCCTCGACTACCAGTACGACACCCCGGGCTCTGGGAGCTGGGAGAGGTGAATCAGAGGGTGAGCTCC
TGCCCTGTGTGGAGACCGTCCAGGGCTCCTTGTGATACCGGTCCATGTGGAACCGAAGTCCAGCTTC
GAGGCAGGAACCTGTGGCTTTCCAGGATGGCCGAGGAGCAGCGAGTGTGTGCTGGAGCTAGGGAGTCCG
GGAGGTGGCTGTGGAGGCTCAGGTGGAGTGTGCGCCCTCCAGATGTCTGGTCCACATCAAGTCCAG
CAGCATCAGTTCAGTATGAAGCTTTGAAGCCAGAAGTGCAGGTGGGGCTGTTCTGCGTGGGACAGGGC
GTCTGCGCGTGGACAGTGGCAGTGGGCTGCATGTGGTGTGTGATGACTGCTCTGTGGGACATGGGGAG
CAGCCGCTGCCAACTGCCATGCCTCAGTACGACTGTGTGGTGTGAGGGGGAGGGTCCGCGTTGTGTG
GCCCGGAAGCCTGTAATGAAGCCGAGACTGTGGCCACTCAGTGCCCGCACCTCTCATTACTCGGTGG
ATCCACTGACTGGACCTATAGATGGAGGACCCGTGTCACTATCAGGGGCTCCAACCTGGGCCAACATGT
GCAGGATGTCTGGACATGGTCCAGAGTGGCCGGAGTTCCTGCGCTGTGGATGCTGGGGAGTATGATGTC
TCTAGTAGTCTTGTGTCATCACTGGAGCCAGCGGGGAGGAGTACTGGCACTGTGGCAGTGGAGGTGC
CTGGAAGAGGACCGGTGTCTCAGAGTTCAGTTCCTATCAGGATCCAAAAGTCACTCCATCTTCCC
AGCCCGTGGCCCTAGAGCTGGAGGTACCCGCTTACCCTGCATGGTCTAAGCTCCTGACTGGACGGCTA
GAGGACATCCGTGTGGTGGTGGAGACCAGCCTTGCACCTGCTCCTGGAGCAGCAGTCTGAGCAGCTAC
ACTGTGAGACCGCCCATACCCTGTGCCTGCTGAAGTCCAGTACTGTCTTGTGGGGCCACTGAGCG
GAGGCTTCAGCACGGCCAATTCAAGTATACATCAGACCCCAATGTCACTCAGTGGGGCCCTCCAAGAGC
TTCTTCAGCGGAGGACGTGAGATATGGGTCCGCGGCCAGGATCTTGATGTGGTACAGAGGCCAAGAATCC
GAGTGACCGTGGTCCCAAGACAGCATGGCCAGGGGCTTGACAGAAGCAACACGTGGTCCCTGAGAAATT
TGAGGAGCCGTGTCTCGTGAAGTCCCTCCACCTCCTCATGTGCCGCACTCCCGCTCTCCCTGGCCACCC
TGGGACTCTGGGGTCCAGGTGGAGTTTATCCTCGACAACATGGTCTTTGACTTTGCTGCACTGAGCCCCA
CACCTTCTCCTATGAGGCTGATCCACCTGCGTTCCCTGAACCCGAGGATCCAGCAGCCGCTTCCG
GCACAAGCCAGGGAGTGTCTTCTGTGGAGGGGAGAATCTGGACCTCGCCATGTCTAAGAAGAGAGGTG
GTGGCCATGATAGGGGACGGGCCCTGCGTGGTAAAGACACTGACCCGGAACCACCTGTACTGTGAGCCCC
CTGTGGAGCAGCCCTGCCACATCCCCATGCCCTCCGAGAGGCTCCAGATGCTTTGCCTGAGTTCACGGT
ACAGATGGGCAACCTGCGCTTCTCCTTGGGTGATGTGACGATGCGGAGAGCCCGTGGCTTTTCT
GTGGCAGCCCAAGTGGGCTTGGGAGTGGGCACGTCTCTCCTGGCTCTGGGTGTCATCATTTGCTCTCA
TATACAGGAGGAAGCAAGCAGGCCCTGAGGGACTATAAGAAAGTGCAGATCCAGCTGGAGAACCCTGGA
GAGCAGTGTACGGGACCGCTGTAAGAAGGAGTTTACAGACCTCATGACGGAGATGACGGATCTCACCAGT
GACCTCCTTGGCAGCGGTATCCCCTTCTTACTACAAAGTGTATGCTGAGAGGTTCTTCTCCCTGGGT
ACCGGGAGTCCCCCTTGACAGGGACCTCGGTGTGCCTGACAGCAGGCGACCCACCGTGGAACAGGGCCT
GGGGCAGCTCTCAACCTGCTAAACAGCAAGCTTCTTACCAAGTTCATCCACACTGGAGAGTCCAG
CGCACCTTCTGCTCGGACCGTGCCTACGTGGCATCTCTGCTCACTGTTGCACTTACGGGAAGCTTG
AATACTTACGGACATACTGCGGACTCTGCTCAGTGCCTGAGTGGTGTGCTCAGTATGTTGCCAAGAACCCTCA
GCTGATGCTGCGCAGGACAGAGACCGTGGTAGAAAAGTGTCTACCAACTGGATGTCCATCTGCCTCTAC
ACCTTTGTGAGGGACTCTGTGGGAGAGCCTCTGTATATGCTCTTCCAGAGGGATTAAGCATCAAGTGGACA

AGGGTCCCGTGGACAGTGTGACTGGCAAAGCCAAATACACTCTGAATGACAACCGCCTGCTCAGAGAGGA
TGTGGAGTACCGTCCCTTGACCTTGAATGCTCTTCTGGCTGTGGGGCCTGGGGCAGGAGAAGCCCAGTGT
GTACCTGTGAAAGTCTGGACTGTGACACCATCTCCAGGCCAAGGAGAAGATGCTAGACCAGCTTTACA
AGGGAGTGCCCTTTGCCAGCGGCCGACTCTTGACCTTGGATGTTGAATGGCGGTCTGGAGTGGCTGG
GCACCTTATCCTTTCTGATGAGGACGTCACCTCCGAACCCAGGGTCTGTGGAGGCGTCTGAATACACTG
CAACATTACAAGGTCCCAGATGGAGCAACGGTGGCCCTTGTCCCCTGCCTACCAAGCATATTCTTAGGG
AAAACCAGGATTATGTCCCTGGGGAACGGACCCCAATGCTGGAGGATGTAGATGAGGGGGGCATCCGGCC
CTGGCACCTGGTAAAGCCGAGTGATGAACCAGAGCCTCCAGGCCGAGGAGGGGCAGCCTTCGGGGTGGG
GAGCGTGAGCGAGCCAAGGCTATCCCTGAGATCTACCTGACACGCCTGCTATCCATGAAGGGCACACTGC
AGAAGTTTGTGGATGACCTGTTCCAGGTGATTCTCAGACCAGCCGCCCTGTGCCTCTGGCTGTGAAGTA
CTTCTTTGACTTGCTGGATGAACAAGCTCAGCAGCATGGCATCTCTGATCAGGATACTATCCACATCTGG
AAGACCAACAGCCTGCCGCTAAGGTTCTGGATCAACATCATCAAGAACCACAGTTTGTGTTGATGTGC
AGACTTCGATAACATGGATGCTGTGCTCCTGGTCATTGCACAGACCTTCATGGATGCTTGACCCTGGC
CGACCACAAGCTGGGCCGGGATTCTCCCATCAACAACTTCTGTATGCTCGAGATATTCCCCTTACAAA
CAGATGGTGGAAAGTACTATGCAGACATCAGACAGACTGTCCCGCCAGTGACCAAGAGATGAACTCAG
TCTTGGCGGAGCTGTCCCGAACTGCTCTGCCGACCTTGGGGCGCGAGTGGCTCTGCATGAACTCTACAA
GTATATCAACAAGTACTATGACCAGATCATCACTGCCCTGGAGGAGGATGGCACTGCCAGAAAGATGCAG
CTGGGCTACCGGCTCCAGCAGATCGCCGCTGCTGTGAAAAACAAGGTCACGGATCTA

ACGCGTACGCGGCCGCTCGAG - GFP Tag - GTTAA

Protein Sequence: >MG222673 representing NM_172775
 Red=Cloning site Green=Tags(s)

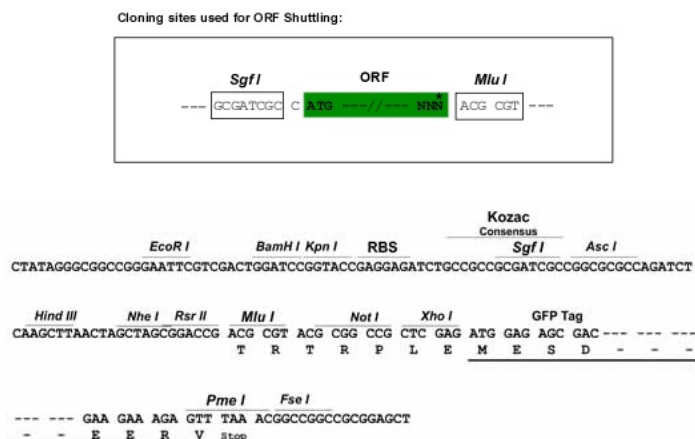
```

MSVLGPVLLQVFWAGCVVTLRSPLPAAFTANGTHLQHLARDPTTGTLVYGATNFLFQLSPGLQLEAVVST
GPVNDSDRCLPPVIPDECPQAQPTNPNQLLLVSPEALVVCGSIHQGICELRSLGQIRQLLLRPERPGDT
QYVAANDPAVSTVGLVAQGLVGEPLLFVGRGYTSRGVGGGIPPIITRALRPPDQAAF SYEETAKLAVGR
LSEYSHHFVSAFVRGASAYFLFLRRDLKAPSRAFRAYVSRVCLQDQHYYSYVELPLACQGGRYGLIQAAA
VATSKEVARGDVLFAAFSSVAPPTVDWPLSASTGASGTSVLCAPFLDEVQQLANYTRDACYTREGRAENG
TKVADIAYDVLSDCAQLPVDTPDAFFPCGSDHTPSPMVSCVPLEATPILELPGVQLTAVAVTMEDGHTIAF
LGDSQQQLHRVYLGPRSAAPYSKQSIQPGSPVNRDLTFDGTFEHLYVATQTTLVKVPVAPCAQHLDGDS
CLAHRDPYCGWCVLLGRCRRSECSRQDQPEQWLWSFQPELGCLRVAVSPANISREERREVFVLPGLP
SLWPGESYFCYFGDQQPALLTSSGVMCSPDPSEAPVLQRGADHISVNVELRFGAVVIASLTSFYDCV
AVTASSPSAPCRACVSSRWGCNWCVWQQLCTHKASCDAGPMVASQQSPLLPLIPPARDELTPFPPTVPQT
TVTPTNSFPPIEPRAPSTASDVLPGAKPSRLSLWGPWAGPGPILSPTSTESPLHEKPLPPDPPTIPGTTV
PAPTGLGPSTTPEDLLASYPFSDAAA VSPAEPGPEALPSMVALDQPPGTVPDTPFGAPGSMKPVLDWL
TKGGGELPEADEWMGGDTPAFSTSTLLSGDGDSEHEGPPAPLILLSSLDYQYDTPGLWELGEVNRVSS
CPCVETVQGSLLIPVHVEREVQLRGRNLWLFQDGRSSECVLELGSREVAVEAQVECAPPDVWCHIKCQ
QHQFSYEALKPELQVGLFLRWAGLRVDSADGLHVVL YDCSVGHGDCSRCQTAMPQYDCVWCEGERPRCV
AREACNEAETVATQCPAPLIHSDVPLTGPIDGGTRVTIRGSNLGQHVQDVLDMVRVAGVPCAVDAGEYDV
SSSLVCITGASGEEVTGTVAVEVPRGRGHVSEFSFAYQDPKVHSIFPARGPRAGGTRLT LHGSKLLTGR
EDIRVVVGDPCHLLLEQQSEQLHCETGPYPVPAELPVTVLFGATERRLQHGFKYTSDPNVTSVGPSKS
FFSGGREIWWRGDLDVVQRPRIRVTVVPRQHGGLAQKQHVVPEKFEPECLVNSSHLLMCRTPALPGPP
WDSGVQVEFILDNMVDFFAALSPTPF SYEADPTLRSLNPEDPSTPFRHKPGSVF SVEGENLDLAMSKEEV
VAMIGDGPCVVKTLTRNHLYCEPPVEQPLPHPHALREAPDALPEFTVQMGNLRFSLGHVQYDGESPVAFP
VAAQVGLGVGTSLLALGVIIIVLIYRRKSKQALRDYKQVQIQLENLESSVRDRCKEFTDLMTEMDLTS
DLLGSGIPFLDYKVAERFFPGYRESPLHRDLGVPDSRRPTVEQGLGQLSNLLNSKFLTKFIHTLESQ
RTFSARDRAYVASLLTVALHGKLEYFTDILRTLSDLVAQYVAKNPKMLRRTETVVEKLLTNWMSICLY
TFVRDSVGEPLYMLFRGIKHQVDKGPVDSVTGKAKYTLNDNRLLREDVEYRPLTLNALLAVGPGAGEAQC
VPVKVLDCTISQAKEKMLDQLYKGVPLAQRPDSTLDVEWRSGVAGHLILSDEVTSSELQGLWRRNLTL
QHYKVPDGATVALVPCLTKHILRENQDYVPGERTPMLDVEGGIRPWHLVKPSDEPEPPRRRGSRLGG
ERERAKAIP EIYLTRLLSMKGTLQKFVDDL FQVILSTSRPVPLAVKYFFDLLDEQAQQHGISDQDTIHIW
KTNSLPLRFWINI IKNPQFVFDVQTSNDMDAVLLVIAQTFMDACTLADHKLGRDSPINKLLYARDIPRYK
QMVERYADIRQTVPASDQEMNSVLAELSRNCSADL GARVALHELKYINKYYDQIITALEEDGTAQKMQ
LG YRLQQIAAAVENKVTDL
  
```

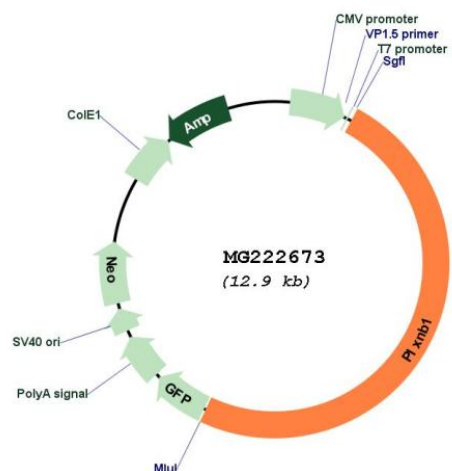
TRTRPLE - GFP Tag - V

Restriction Sites: SgfI-MluI

Cloning Scheme:



Plasmid Map:



ACCN:

NM_172775

ORF Size:

6357 bp

OTI Disclaimer:

The molecular sequence of this clone aligns with the gene accession number as a point of reference only. However, individual transcript sequences of the same gene can differ through naturally occurring variations (e.g. polymorphisms), each with its own valid existence. This clone is substantially in agreement with the reference, but a complete review of all prevailing variants is recommended prior to use. [More info](#)

OTI Annotation:

This clone was engineered to express the complete ORF with an expression tag. Expression varies depending on the nature of the gene.

| | |
|-------------------------------|---|
| Components: | The ORF clone is ion-exchange column purified and shipped in a 2D barcoded Matrix tube containing 10ug of transfection-ready, dried plasmid DNA (reconstitute with 100 ul of water). |
| Reconstitution Method: | <ol style="list-style-type: none">1. Centrifuge at 5,000xg for 5min.2. Carefully open the tube and add 100ul of sterile water to dissolve the DNA.3. Close the tube and incubate for 10 minutes at room temperature.4. Briefly vortex the tube and then do a quick spin (less than 5000xg) to concentrate the liquid at the bottom.5. Store the suspended plasmid at -20°C. The DNA is stable for at least one year from date of shipping when stored at -20°C. |
| RefSeq: | <u>NM_172775.2</u> , <u>NP_766363.2</u> |
| RefSeq Size: | 8600 bp |
| RefSeq ORF: | 6360 bp |
| Locus ID: | 235611 |
| UniProt ID: | <u>Q8CJH3</u> |
| Cytogenetics: | 9 F2 |
| Gene Summary: | Receptor for SEMA4D (PubMed:19788569). Plays a role in GABAergic synapse development (PubMed:23699507, PubMed:29981480). Mediates SEMA4A- and SEMA4D-dependent inhibitory synapse development (PubMed:23699507, PubMed:29981480). Plays a role in RHOA activation and subsequent changes of the actin cytoskeleton (By similarity). Plays a role in axon guidance, invasive growth and cell migration (By similarity).[UniProtKB/Swiss-Prot Function] |